

That's Inside

Area guide reports
Licenses
Sturgeon Season
Walleye Population
Map of the month
September Specials
Saga of a
Shore Lunch

REMEMBER THE GOOD OL' DAYS!



After a summer like '92 it's always nice to sit down, relax and "REMEMBER". . .

Remember. . . when you could go down to your pier and make a half dozen casts and catch 4 or 5 walleye.

Remember. . . when you could get in your boat and go out to your favorite weed patch or rock bar and catch a walleye on almost every cast.

Remember. . . going down to the river with your Dad and catching a northern, walleye, or bass on almost every cast with a plain yellow Doll-Fly or maybe it was a red & white maribou jig with silver flecks.

Remember. . . when you could take a leisurely row around the lake and catch two muskies and probably miss 5 or 6 (all over 20 lbs.).

Remember. . . heading to your favorite log or brush pile in the river and catching a dozen or two 12 to 14 inch perch or crappie using a can of worms you dug from the garden.

Remember. . . when the Trout River between Wild Rice and Alder Lakes was but a snake trail through the wild rice and you could catch fish almost anywhere on an artificial lure.

Remember. . . The fabulous fishing on Jag and Little John Lakes after the D.N.R. stocked these lakes with walleye.

Remember. . . when there used to be a fish ladder by the Manitowish Waters dam.

Remember. . . when there was a fish hatchery below the Manitowish Waters Dam.

Remember. . . when George Myers, head of D.N.R. law enforcement, said spear fishing wouldn't hurt.

Remember. . . 40 years ago when Grandpa used to say "fishing sure isn't as good as it used to be".

Remember. . . there are two sayings that are valid for every angler of every generation. One is "fishing sure isn't what it used to be." And the other is "you should have been here yesterday".

And just think. . . today is some day going to be somebody's "Good Old Day".

Good Remembering.

Bob

Musky Classic "Plowing New Ground"

The Sixteenth Annual World Championship Musky Classic, to be held in the North Lakeland area September 11, 12, and 13th, has brought together some very unique people. This "trophies only" contest, that only charges \$10.00 for an entry fee, has already developed a scholarship program of \$4000.00 per year and may soon take another step to help promote the area and help our children.

Mirrocraft Boats has decided to use the magazine developed by "The Classic" to advertise their products. This move may bring other "national" advertisers to "The Classic" and spawn programs and awards that were never dreamed of. St. Croix rods has expressed interest, Zebco, Hummingbird, Lowrance, Fenwick, Ranger, Daiwa, and others have, also been contacted. Where might this lead? Well, let's not "take the cart before the horse" but we can do some dreaming! Another scholarship is a possibility, more outdoor projects like cribs, landing improvement, stocking programs and others are possible. It should be very exciting.

"The Classic" uses 30 lakes during the contest with registration and weigh stations at easy access. Only four fish have been kept in the last three years.

Chicagoan Dave Schnell's 37 pounder from Trout Lake remains the tournament record and Team Swanson is the current "Club" champion. Jim Bolton is returning to defend his "Open" Division championship and Manitowish Waters holds the "Township" trophy for producing the winning fish.

The contest starts with an orientation at the North Lakeland Elementary School gymnasium on Friday morning, September 11th, at 8 a.m. where free coffee and doughnuts will greet the crowd. Fishing is noon to 7 p.m. on Friday, 7 a.m. to 7 p.m. on Saturday, and 7 a.m. to 11 a.m. on Sunday with the awards at 1 p.m. at the Community building in Presque Isle.

There is also a "contestants only" raffle of donated merchandise from the people and businesses of the area.



People wanting to join this unique contest should call 715-543-2296, 715-686-2558, or 715-686-2033 for entry blanks and information.

**GOOD LUCK
FISHERMEN**

Quips and Tips from Area Guides

MANITOWISH WATERS AREA

Bob McClellan - Guide - Newsletter Publisher
Junction Tackle and Gift
Manitowish Waters, WI 54545
715-543-2776

It seems like fall has been in the air most of the summer, but as we head into September it is now becoming a reality. Fishing has started to pick up a little on the Manitowish chain, with reports of some nice crappies and walleyes. Minnows are by far the most productive bait, with night crawlers and leeches (small) still producing a few. Weeds and depths of 8- to 15 -feet continue to be the key if you're looking for walleyes.

Fawn Lake has been producing some nice catches of crappie again in depths of 10- to 12-feet using small minnows and slip bobbers set at 6 feet. Walleyes have also been active in the cabbage weeds at 10- to 12-feet using 1/16 ounce jigs tipped with a medium-sized chub.

Stone Lake has been producing some nice smallmouth bass action along the stumps and rocks of the eastern shore. If you're looking for walleye - try the rocks out from Fox Island in the evening with jigs and minnows. Toward the end of the month try the deeper water just off Beaumonts Island - a lot of small walleye, but some nice ones as well. Musky action was slow in August, but look for some good action here in September.

Clear Lake walleye were hitting blue sixteenth-ounce jigs tipped with night crawlers in 12- to 15 feet of water in Haskings Bay. Weeds still are your best bet for finding walleye here, but they should be on rocks around 20 feet in the very near future. Smallmouth

bass are still hitting on the rock bars and along the south shore. 12 to 15 feet seems to be the magic depth.

Manitowish Lake continues to produce walleye, mainly in the evening, in the weeds. Jigs tipped with minnow have been working the best. Look to the rock bars September for some trophy walleye. Muskies have been doing a lot of following on Cranes and bucktails, but not many takers. Most muskies caught have been small and released to fight again.

Alder Lake has been producing good walleye action in the weeds on the north end and also the weeds along the east shore. Sixteenth-ounce jigs tipped with small minnows and also minnows suspended on a slip bobber in 8 to 12 feet of water. In the evening try the 5- to 6 feet of water by the mouth of the Trout River with weedless jigs tipped with minnows or lighted slip bobbers. Musky have been active on surface baits like the Tally-Wacker and Hawg Wobbler. Fish the north shore and the two weed bars just off the north shore. It's been several years since I've seen a 30 pound fish come out of Alder, but reports are that there's another good fish lurking in these waters.

Wild Rice Lake has been very good for crappie (12 to 14 inch) in 10- to 12 feet of water. One of the hottest area's has been the south end of the lake just out from the entrance of the Trout River and also the center bar out from the boat landing. Small minnows suspended on a slip bobber at 5 to 8 feet has been working the best. Walleye action hasn't been super, but nice fish are being caught on the center bar at 8- to 10 feet, just off the weeds and also the small rock bar on the south end.

Rest Lake is one of the best September Lakes on the chain. Walleye can be found on the two rock bars just north of the boat landing and also many of the deep cribs and rock bars shown on my Rest Lake map. Hot pink or chartreuse 1/8-ounce jigs tipped with a minnow are tops. Also you will find a lot of smallmouth bass in the same areas as the walleye. in the 16- to 24 feet range. This is also a premier musky lake in September. Deep-running crank baits like Cisco Kids and Grandma Baits work great as well as your deeper-running bucktails, when working the sharp drop-offs and rock bars. Surface baits and your shallow-running crank baits will work great when working the wood on the north end and also the shallow bay by Red Feather Lodge.

Island Lake has been quiet most of the summer, but this also is one of your premier September Lakes. The walleye always seem to turn on on the many rock bars scattered throughout the lake. Early in the day I would fish 10 to 15 feet and then continue to fish deeper as the day progresses, depending on wind and sky conditions. This is also a great lake for smallmouth and musky.

Dead Pike and Circle Lily are also good September Lakes for musky and walleye, but normally you'll find only the locals fishing these lakes. There is a good reason for this and I'm sure you can figure it out. Secret! Secret! Why not check it out yourself.

Great fishing to every one during our 16th annual Musky Classic and we'll see you on the water.

Good luck and take a kid fishing.



JESSE ECK OF MARIBEL, WI GOT HER STRINGER OF WALLEYE AND SMALLMOUTH OUT OF THE FLAMBEAU FLOWAGE, USING JIGS AND LEECHES.

BOULDER JUNCTION AREA

TOM SWANSON'S GUIDE SERVICE

P.O. Box 144

Boulder Junction, WI 54512 715-385-2168

Walleye fishing normally takes a back seat to musky fishing during the month of September. Much of this is because walleyes are hard to find. As I have stated in earlier issues, walleyes spend 80% of the summer in and around weed beds; now, however, it's time to start fishing the deeper rock structures in the lake.

Minnows, 1/8-ounce jigs and deep rocks are the key to catching walleyes in September and the remainder of the open water fishing season.

Water depth is now more important than ever. Once you catch a walleye or two, you should be able to find more fish at that same depth on similar rock structure in that lake.

Two methods work very well this time of year. One is to anchor upwind from the structure, while casting a jig and minnow downwind to the bar. Fan-cast the whole area until you catch a fish, then make sure your next cast goes right back to the same spot. Walleyes school in a tight group, so it's extremely important to retrieve the jig through the same area where the last fish came from.

The second method is to vertical-jig over the side of the boat while back-trolling slowly over deep rocks. When you get a strike, throw a marker buoy so you won't lose the spot. Don't use the buoy to mark the school of fish, but the position of your boat at the time of the strike.

September can be the very best time of the year for walleye. Don't be afraid of deep water and make sure the jig and minnow are always on or very near the bottom.

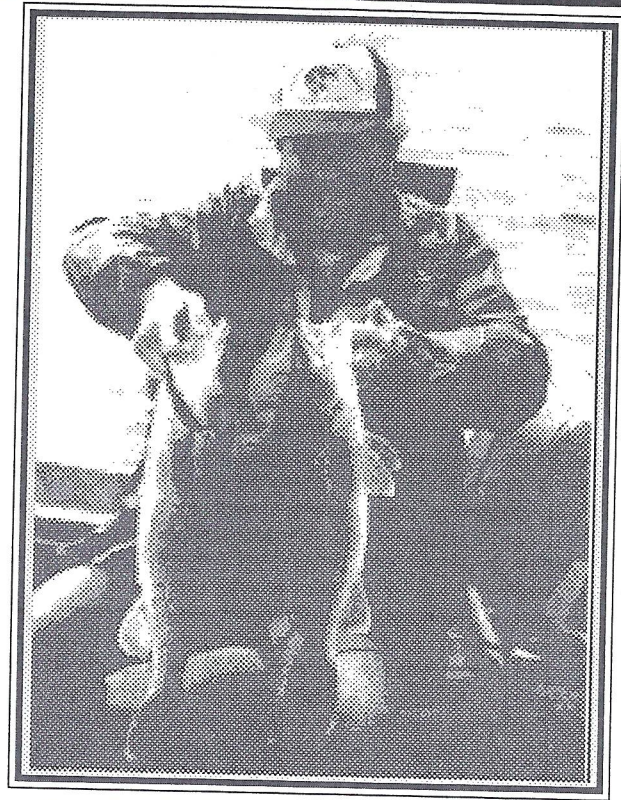
Big Lake is producing good catches of walleyes in the rocks from 25- to 35 feet of water. Try the areas from Keiths Island to Keego Lodge. There are lots of rock humps in this portion of the lake.

Boulder Lake is giving up good catches of crappies in about 20 feet of water. Slip bobbers and small minnows are working the best. Walleyes are also biting in the deep rocks (In Boulder, 25' is deep). 1/8-ounce slow-poke jigs and medium-sized chubs will work well here.

High Lake has been having some good musky action. Fishing the deep drop-offs with bright colored crank baits, with a medium speed retrieve should show you some good action. Walleyes are being caught in the deep rocks between Forest Lodge and Pine Point. Jig and a minnow will also work here.

Remember whatever the season, practice Catch and Release all year 'round.

Tom



"Now, this is going to make a mighty fine shore lunch!"
SAYS BOULDER GUIDE, TOM SWANSON.

IT IS THAT TIME. . . .

It's that time of year again. August 31st is the expiration of the Conservation Patron and Sport Licenses. If you have either an inland water trout stamp or a Great Lakes trout and salmon stamp, be sure to keep your old license with you as the stamps are valid until December 31st.

The '92-'93 Sports License costs \$33.00 and the Patron License costs \$90.00, both of which will expire on March 31, 1993. These licenses are available to Wisconsin residents only.

Don't be one of the few who get reminded by our friendly local wardens after the August 31st deadline.

Sturgeon Season Opens September 5th

Lake sturgeon season opens September 5th and runs until October 15th. Minimum size limit is 50 inches.

If you fish for lake sturgeon with hook and line, you must first obtain a free tag. You are allowed one tag, unless you fish in WI-MI boundary waters, where you are allowed an additional tag.

After catching a lake sturgeon of legal size that you wish to keep, immediately attach your tag to the fish in front of the sturgeon's tail. Then register your catch at a DNR registration station no later than 6 PM the day after you caught the fish. A list of registration stations will be provided where you pick up your tag.

LAC DU FLAMBEAU AREA

BY BOB McCLELLAN

If you're looking for some great fishing in September you should give serious thought to fishing one of the many fine lakes in this area, where over 30 million fry and fingerlings have been stocked annually by the Tribal Fish Hatchery since 1960. The walleye bag is 5 fish on which- ever lake you choose, with a minimum size of 15 inches. Musky size limit is 32 inches with a daily bag of 1 fish.

PANFISH

There are many excellent panfish lakes in this area, but some good choices are **Gunlock, Squaw, Shishebogama**, or some of your smaller bog lakes like **Black** and **Tank**. This is also the time for some great "jumbo perch" on **White Sand** and **Pokegama**. In September, the perch can be found in 20-to 25 feet of water on the deeper rock bars, using small redbait chubs or walleye-sized fat-heads.

BASS

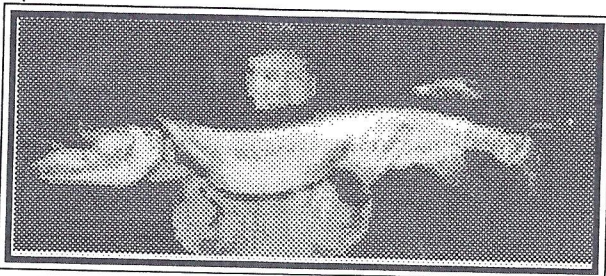
Smallmouth action has been excellent on **Little Trout, Fence**, and **White Sand** on minnows or night crawlers in 20 to 25 feet of water. In September, smallmouth action is usually good on these lakes also, but as the water cools down they continue to drop deeper.

WALLEYE

Walleye fishing has been excellent on **Ike Walton, White Sand, Pokegama**, and **Squirrel Lakes** using night crawlers or leeches, but the majority of the fish caught are below the 15 inch minimum size limit. In September, you always do better as the fish start dropping down in depth, and the size ratio continues to climb. The deep weeds in **White Sand** and **Flambeau Lakes** and also some of the deeper cribs produce nice walleye using 1/16-ounce jigs tipped with a night crawler. By mid-September use 1/8-ounce jigs tipped with a medium chub on some of the many rock bars in **Pokegama, Flambeau, Crawling Stone, Little Trout** and **White Sand**.

MUSKY

If you're looking for that fish of a life time - The entire **Flambeau Chain**, plus **White Sand, Little Trout, The Sugarbush Chain, Buckskin** and **Squaw Lakes** are all excellent lakes in September. Fish in the 25-and 30-pound class are in all of these lakes. The next time you're trying to decide where to catch Mr. Esox, why not give one of these lakes a try - you may be pleasantly surprised.



DEAN KRAMER MANITOWISH WATERS, WI - WITH HIS 47" - 24# MUSKY.

Adult Walleye Population Estimate

Turtle-Flambeau Flowage, Iron Co. - Spring, 1992

Fyke nets were set for about two weeks in late April in order to mark adult spawning walleyes for the population estimate. Fish were given different fin clips in different areas of the lake in order to determine movement later on in the season.

Mark	Male	Female	Unknown	Total
LV - Main Lake	6994	1190	339	8523
RV - Lake of the Falls	3610	1282	16	4908
LP - Manitowish River	876	293	4	117

Grand Total 14,604

These are the average sizes of the walleyes marked in each location:

	LV	RV	LP
Male	14.7"	14.3"	16.4"
Female	17.5"	17.3"	19.9"

Fish marked in the Manitowish River channel were significantly larger than those marked out in the main lake or in the Turtle River.

The male to female sex ratio in the marked sample was 4.2:1. The largest walleye marked was 28.0-28.5 inches long and was caught in the Lake of the Falls area.

Other gamefish caught in the nets included northern pike, musky, largemouth and smallmouth bass. It's important to note that this study did not target these species and therefore the samples (with the exception of northern pike) are probably not representative of what is actually in the flowage.

Species	Number Caught in Nets	Av. Size (in.)	Largest Fish (in.)
Northern Pike	864	17.1	28.0
Muskellunge	37	31.8	44.5
Smallmouth	70	13.0	17.0
Largemouth	9	14.5	17.0

Immediately after the marking period the flowage was surveyed with electroshockers in order to get a recapture sample for the population estimate. A total of 6727 fish were collected in four nights of shocking. Preliminary calculations estimate an adult walleye population of:

62,882 +/- 3152 or 4.6/acre over 11"

This figure is slightly lower than the estimate that was generated in 1989. The estimate in 1989 was 83,619 fish over 9". The 1992 estimate for all fish over 9" is 76,347 +/- 3992 or 5.6/acre. The 1992 estimate was calculated on fish over 11" because aging data in 1989 showed us that not all fish were mature at 9".

Later in May, the flowage was surveyed a second time with electroshockers. After the spawn, the adult walleye disperse and the juvenile walleye come into the shallow areas. By taking another sample we can get an estimate of the "total" population of walleyes in the flowage. In addition, catch per unit effort (CPE) values from shocking can give us an idea of what recruitment is like in comparison to previous years. The 1992 "total" population estimate for the Turtle-Flambeau Flowage is:

195,794 +/- 22,644 or 14.5/acre all sizes

This estimate appears to be down from 1989. The same estimate in 1989 was 298,803 walleyes, or 22.0/acre. However, the second recapture showed that there are significant numbers of young fish moving into the adult stocks, although actual CPE values are not yet calculated at this time.

In summary, although the walleye population may be down slightly in the Turtle-Flambeau Flowage, a quality fishery still exists and recruitment looks good. A followup electroshocking survey this fall will tell us what kind of reproduction occurred this past spring. In addition, a creel survey of angler harvest is being conducted and we expect to have results for the open water season sometime this winter.

Presque Isle - Winchester

Ken Retnicke
HC1 Box 373
Presque Isle, WI 54557 715-686-2033

Presque Isle/ Winchester Lakes Back to Normal

Back to normal? What are you talking about? Well, I'm talking about this past season when the "normal" fishing patterns and schedule was way out of "whack"! The cold spring and summer temperatures coupled with the spring rains threw some "scheduled" fishing way off. The cold water temperatures inhibited weed growth on all of the area lakes. The "usual" schedule calls for weeds to emerge in early to mid June. NOT THIS YEAR! In fact, the weed growth on **Van Vliet**, **Rainbow**, **Tamarack**, and other "weed oriented" lakes never happened. This caused the fish to be much more scattered and "limits" to be a lot tougher to come up with. THANK HEAVENS FOR FALL. The fish, in the last three weeks, have returned to their regular habits and they're a lot easier to predict. For instance:



DAVE GRIMES WITH A NICE MIXED BAG OF SMALLMOUTH AND WALLEYE CAUGHT WITH JIGS AND LEECHES.

On **Presque Isle**, with a south or southwest wind and some clouds, you'll find the Walleyes on the edge of the drop on the North end and on the northeast bars in 12 to 15 feet. Take away the clouds and you have to go to 35 or even 45 feet on the gravel patches off the edge of the bottom of the drops. Medium-size Redtail chubs on eighth-ounce fluorescent green or orange jigs seems to be the best rig.

The "**Turtles**" have been producing the most consistent catches. The weed edges on **South Turtle** and the rock bars in **North Turtle** are the best spots with sixteenth-ounce jigs tipped with small Redtails producing best. Remember to use four-pound test line!

Oxbow has been the "forgotten" lake this summer but it should start to produce any day. I'd take the time to check it out if you have a "spare" afternoon.

Stateline Lake has, on occasion, "saved my butt" this year. When I had problems filling the stringer I headed for the cabbage patches and the lily pads on that lake. The Largemouth Bass and Northerns were a bit more cooperative than the Walleyes. Leeches and plastic worms caught the Bass; big sucker minnows got the Northerns. But as the weed growth became real thick the Northerns seemed to be tougher to catch. Put that in the memory bank for next year!

The Smallmouth and Largemouth Bass on **Katinka**, **Anne**, **Minonk**, **Carlin**, and **Tamarack** have also come to life. Slide a jonboat or canoe into one of those lakes and use some Mud minnows on jigs and you'll come home a happy fisherman.

The fish production on **Little Horsehead** is also improving. Don't ask the "locals"! They're smart enough to stay quiet. Take a hint.

Afternoon fishing on **Annabelle** is also producing some Walleyes. They tend to be small, however.

Harris is also ripe for some "pickin'". I've heard that the late afternoon has been "pumpin' out" some good catches. Jigs and redtails there in 15 to 25 feet. Try it!

Muskies are movin' on **Crab**, **Big Horsehead**, **Minonk**, and **Presque Isle**. I saw a beautiful "Tiger" out of **Presque Isle** that no one has reported. Try the Averill entrance and southeast shoreline. The back bays around Bay View Lodge have also produced.

I hope you have the time to check some of these things out. Seems I get less and less time as I get older. Better sit back and smell the roses; winter's not that far away!

Ken



BILL AND JIM GREER WITH A NICE STRINGER OF SMALLMOUTH BASS CAUGHT ON JIGS AND LEECHES.

Specials of the Month
(for Newsletter subscribers only)
PRICES GOOD TIL 9/30/92

Stock Up Now

Just in Time for the ---

16th Annual World Championship Musky Classic

Musky Bait Sale

Buy 3 Musky Baits and get the 4th bait of equal or less value...

Free

Reel Sale

Save a minimum of 10% on any reel in stock.

Many are on close-out at
20% and 30% off.

(Note - Maximum mark-up is 30% on low end reels.)

THE JUNCTION NEWSLETTER

- THE ONLY NEWSLETTER DEDICATED TO SERVING FISHERMEN EXCLUSIVELY IN AND ABOUT OUR AREA.
- PUBLISHED MONTHLY APRIL - DECEMBER
- FISHING REPORTS AND ARTICLES FURNISHED BY THIS AREA'S FINEST PROFESSIONAL GUIDES.
- FEATURED LAKE OF OUR AREA EVERY MONTH
- SAVINGS ON MONTHLY SPECIALS TO SUBSCRIBERS ONLY.

1 YEAR SUBSCRIPTION \$39.00 2 YEARS \$70.00

The Junction Newsletter is printed by Presto Prints at
607 Washington Street - Wausau, WI. 715-842-2226

CHARGE ORDERS WELCOME! Visa _____ MasterCard _____

CARD NUMBER _____ Exp Date _____

NAME _____

ADDRESS _____

CITY _____ STATE _____ ZIP _____



SEPTEMBER STORE HOURS

DAILY 7:00 AM - 5:00 PM
SUNDAY 7:00 - 3:00 PM

The Junction
HC2 Box 228A
Manitowish Waters, WI 54545

Call 715-543-2776 or 543-2359



**THE JUNCTION
NEWSLETTER**

HC 2 Box 228A
Manitowish Waters, WI 54545



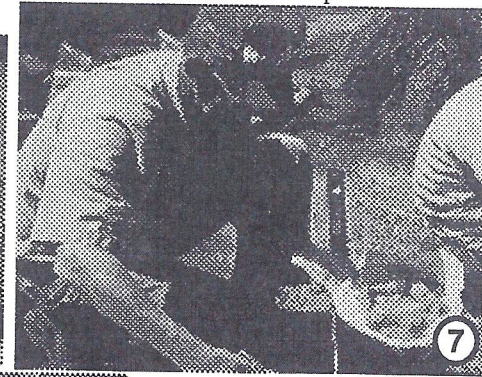
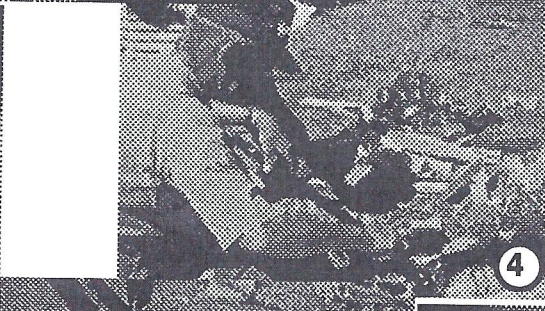
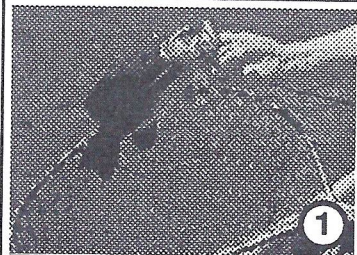
0061
JAMES BOKERN
1226 E 20TH ST
MARSHFIELD WI 54449

4/93

Address correction requested

**SAGA OF A SHORE LUNCH
OR FISH AT ITS FINEST**

1. Catch the fish.
2. Clean the fish.
3. Fry the potatoes and onions.
4. Fry the succulent fish.
5. Almost ready!
6. Check the beans.
7. Serve the lunch and enjoy.
8. Secure the campsite.



The "Junction Newsletter" is published by Junction Tackle and Gifts, Manitowish Waters, WI 54545, 715-543-2776, during the months from April through December, inclusively. The use of excerpts or reproduction of all or parts of this material is strictly prohibited. Annual subscription rate is \$39.
POSTMASTER: Send address corrections to Junction Tackle and Gifts
HC 2 Box 228A
Manitowish Waters, WI 54545
Copyright © 1992

