

**What's Inside?**

Guides Reports  
Map of the Month  
Free Fishing Day  
Crappie Facts  
June Specials

## SENSING THE BITE OR STRIKE



Detecting a strike or bite is one of the hardest things to learn when fishing walleyes, and it has to be the reason that many fisher-people fail to catch them consistently. When a musky hits a fast moving bucktail or a bass hits a crank bait there is no doubt in your mind as to what you must do, **SET THE HOOK!**

When fishing walleye with live bait we have a completely different ball game. Whether we're using a leech, minnow or rite crawler, on a lead head jig, floating jig or plain hook, makes no difference when trying to detect the strike.

I've seen fishermen play weeds for five minutes and more often than not, I've seen fisherman snap the bait from a hungry walleye's jaws. If you feel an extra drag on the line, it could be a fish or it could be a weed, branch, etc.. The best way to tell, without wasting a lot of time, is to lift your rod high and put a light tension on the rod tip; if nothing happens put more tension on. If it doesn't pull back, you're on a weed or stick. (I've never found a rock, weed or stick that pulls back yet.) If you're fishing weeds and it doesn't pull back, give the rod a short snap and break the weed off, rather than pull slowly and pull the weed out by the roots and scare all the fish in the area!!!

Time on the water is the only thing that will tell you how much tension you can put on a fish before he drops the bait. My recommendation is to fish with a fast-action graphite rod, which will transmit the vibrations of a striking fish, and give you an added advantage in detecting and catching more walleye for the dinner table.

If you're having trouble detecting a bite or have questions on what type rod to use - give us a call or stop by The Junction and we'll do our best to solve your problems.

Good luck and take a friend fishing,

## ZEBCO/US CRAPPIE TOURNAMENT UPDATE

May 16, 1992, was the kick-off for the Zebco/US Crappie Tournament. Big Crappie Day proved very worthwhile for Todd Powell. He won \$1,000.00 for catching a 1.63lb. fish.

Local winners included Roger McClellan and Annette Tellefson. Roger's 1.19 pound crappie was the 5th place winner for the day and also the 2nd place winner in the hourly contests. Annette's fish was the 1st place winner in the 10:00 AM contest. All who fished the tournament really had a great time and are looking forward to next year!

From now 'til June 30, anglers will be fishing for tagged crappies. There were 181 tagged crappies released into the Manitowish Chain and 102 released in the Boulder Junction area. There is over \$13,975.00 in prize fish swimming around out there, so if you don't have your \$6.00 entry ticket yet, stop by The Junction Tackle and pick it up. The Junction Tackle is sponsoring "Bob the Guide" and he's worth \$1,000 to whoever can catch him! (Tip-he was released in Wild Rice Lake!) There is also another eight \$1000 fish plus who knows where the ZEBCO KID may be? This fish could be worth up to \$25,000.

So far only 2 tagged crappies have been caught in our area. Doc Stephen caught a tagged crappie in Clear Lake worth \$25 and another fisherman caught a \$25 tagged crappie, but did not have a ticket for the tournament! There are nine \$1,000.00 and over two hundred and fifty \$25.00 fish waiting to be caught in Manitowish Waters and Boulder Junction, and you never know where the \$25,000.00 Zebco Kid will be caught!



"How long will it take to fillet these, Dad?"



# Quips and Tips from Area Guides

## MANITOWISH WATERS AREA

Bob McClellan - Guide - Newsletter Publisher  
Junction Tackle and Gift  
Manitowish Waters, WI 54545  
715-543-2776

May fishing in the Manitowish Waters area produced many nice stringers of walleye and crappie. After a cool opening week, the weather finally broke and water temperatures started rising with the 70 and 80 degree days of mid-May. Walleye were actively feeding in the new weed growth in 5' to 10' of water, but the cold front that moved in the last week slowed fish activity and sent surface temperatures back below the 60 degree mark. Jigs tipped with leeches or minnows have been working equally as well, but as the water continues to warm, leeches and night crawlers will soon be your best bait for walleye.

### JUNE WALLEYE

**Alder Lake** - Fish the two weed and sand humps on the north end or the weeds near shore on the north end with jigs and leeches. The center rocks are an excellent choice in the evening. The grass on the east side is also a good area, but don't use jigs or you'll be catching nothing but weeds. Slip-bobbers are the only way to go.

**Clear Lake** - Fish any of the weedy bays on the east side in 5' to 12' of water with jigs or slip-bobbers and also the weeds on the northeast shore. If you can locate the old fish cribs you will find some real hot spots. In the evening try the rock bars toward the north end.

**Island Lake** - An early morning or evening lake in June. Fish any of the sand or gravel humps in 10' to 15' of water. Floating jigs work great. Also try the weeds in the bay by Slight's Wildwood Resort.

**Manitowish Lake** - Try the weeds in **Little Manitowish** or the weeds just out from **Little Manitowish**. 1/16-oz. jigs tipped with leeches work great. Also the weeds along the shore by Deer Park Lodge. The grass weed just out from the **Trout River** is a good area also, but you must use slip-bobbers only.

**Rest Lake** - Fish the wood and stumps by the floating island, the wood on the north end and the wood on the south end of Fox Island. Use 1/16-oz. or better yet 1/32-oz. WEEDLESS jigs or slip bobbers.

**Stone Lake** - Fish the weeds to the west of Fox Island, or the weeds along the south shore of Beaumonts Island. The wood and tree tops in the southwest corner is a good early morning and evening spot with weedless jigs.

**Wild Rice Lake** - Slip-bobbers or 1/16-oz. jigs in the weeds on the east and west ends and also the center weed bar. Try the rock humps in the evening or early morning.

**Dead Pike Lake** - An excellent June walleye lake. Fish the tree tops along the deep southwest shore

with weedless jigs and night-crawlers or leeches. Also the cabbage and coon-tail weeds just out from the rushes. The inlet area by **Dead Pike Creek** also deserves a cast or two.

**Circle Lily Lake** - A sleeper walleye lake. Fish the weed to the northwest of the sand island and the weeds just out from the rushes in 6' to 12' of water. Several cribs located in 10' to 14' of water along the south shore are great areas also. Don't overlook the drowned wood along the south shore.

### PANFISH

Crappie action has been great in **Wild Rice, Fawn, Clear, Island** and **Little Manitowish**. Red/white, yellow/white or pink/white tube jigs or mini-jigs suspended on a bobber or just a plain crappie minnow suspended on a bobber, has been the hot set-up. These same lakes, plus **Stone, Dead Pike** and **Circle Lily** are all good choices for June. Fish the cabbage weed in 5' to 10' of water and also the stumps and tree tops near shore. Bluegills are fanning nests in shallow water in **Wild Rice, Clear, Stone** and **Fawn**. Wax worms, red worms or a piece of a crawler works great.

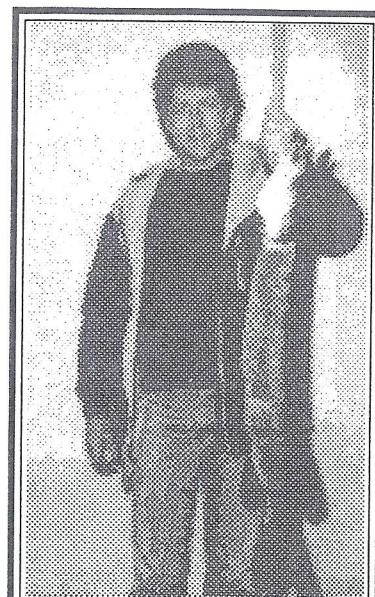
### BASS

Small mouth bass have been very active in almost every lake in the **Manitowish Chain**. Reports of 3 and 4 pounders is very common. Large mouth have also been active in the weeds on **Stone, Fawn, Clear** and **Wild Rice Lakes**. Small mouth are starting to fan nests in sand and gravel areas and can be caught on almost anything that gets near their nest areas. Remember that bass is catch and release only, until June 21st.

### MUSKY

Several musky over 40" and one over 45" were caught in the chain on small bucktails and one on a jig & minnow. All lakes on the chain and also **Dead Pike Lake** have good populations of musky. In the early part of June I would concentrate my fishing time to shallower weed areas and also the **Trout** and **Manitowish River** and **Rice Creek** areas. Use small bucktails like Mepps, Rizzo, Bucher, etc. and some of your small crank or jerk baits. Larger baits also produce fish, but not quite as often as the smaller baits in the early part of the season.

Bob



Mike Fletcher of Palatine, IL caught this 38 1/8" - 12# musky on a jig and minnow in the Manitowish River.



**BOULDER JUNCTION AREA****TOM SWANSON'S GUIDE SERVICE**

P.O. Box 144

Boulder Junction, WI 54512 715-385-2168

For many years as a full-time fishing guide, I have tried to persuade my dedicated clients to try June fishing.

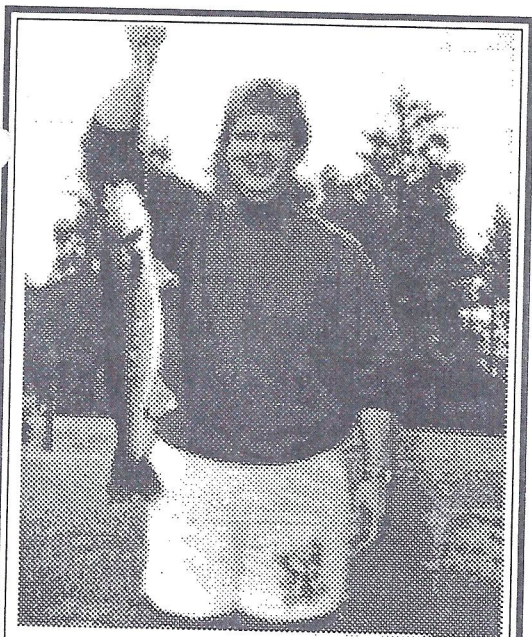
There are three major reasons making June the best month of the year for sport fishing:

1. Warm water - the warm water triggers long aggressive feeding periods.

2. Low to moderate week growth - low weed growth allows us to get right in the weeds and fish the entire bed. Later in July and August we will be able to do a good job fishing only the outside edges of the same beds.

3. Large amounts of feed. - warm water and new weed growth draw large schools of lake minnows as well as bug life to these areas. You now have everything game fish need to hold them in these areas.

Now, what is happening in the Boulder Junction area lakes?



Jim Kellner of Brown Deer, WI raised this walleye from Trout Lake - 27" - 7#

**Boulder Lake**

- Walleye have been hitting well in the Airport bay. Most fish are being caught on 1/16-oz jigs tipped with a leech. Also, try the mouth of the **Manitowish River** and in front of the **Y M C A Camp**. Most fishing success has been in 6 to 8

feet of water. The dark water in **Boulder** allows the walleye to stay shallow for a longer time. Very little light penetrates deeper than four feet. Musky action has also been good. Try the center bar (marked with white jugs). Some of these fish are coming from as shallow as four feet of water. Action has been good in the mouth of the outlet and down the river just past the big beaver house. Use small to medium-size bucktails with lots of bright colors. Top water baits always work well in Boulder Lake with a slow to medium retrieve.

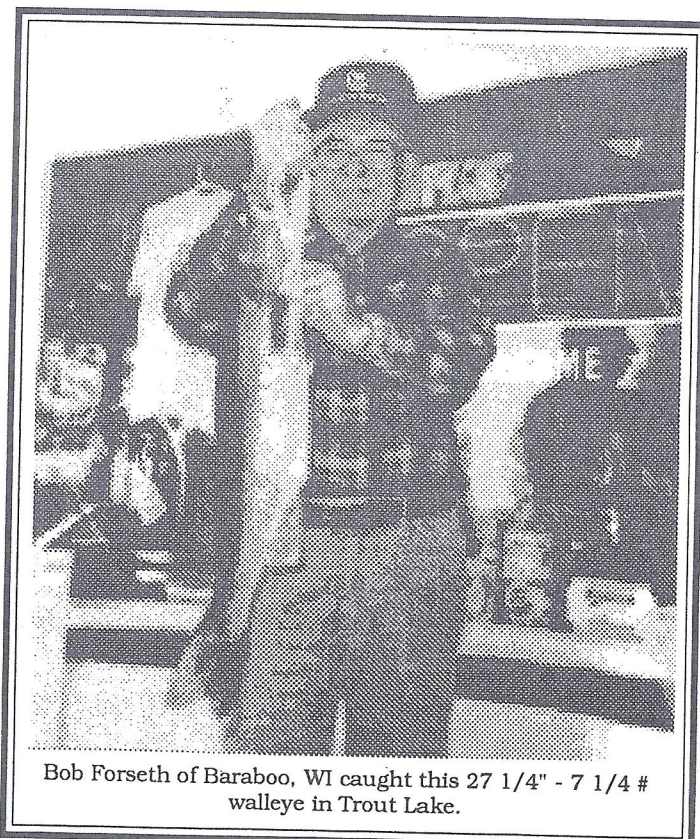
**Trout Lake** - One of the best kept secrets in our area is - the large perch in **Trout Lake**. Perch running 12" to 13" are not uncommon. Try the north lake in 10 to 12 feet of water off Kern's Bar and the Palisades Bar in front of the State Campground. Medium-size minnows and night crawlers have been working best. Musky Action in **Trout Lake** has been slow due to the cold water; however, this should be picking up soon. Walleyes are still biting well in the south lake in the weed beds out in front of Coon's Resort and also the mouth of the **Trout River** and the north bars. Use 1/16-oz jigs with a leech or a crawler.

**Wildcat Lake** - If you want good musky action try **Wildcat**, as well as **Big** and **Little Kitten**. There are not lots of monsters in **Wildcat**, but lots of fish in the 40 inch class and smaller. Small bucktails with brightly-colored spinner blades are my choice.

**Little Crooked Lake** - Mixed bag is the name of the game on **Little Crooked Lake**. Musky, Crappie, Northern Pike and Walleyes are all showing good action. This is a very easy lake to fish. The whole lake has a weed edge; just stay out in 10 to 12 feet of water and fish the edge of the weeds. This is a nice lake to spend a half a day or to get out of the wind for a day.

Remember - whatever the season, practice "Catch and Release" all year around.

**TOM**



Bob Forseth of Baraboo, WI caught this 27 1/4" - 7 1/4 # walleye in Trout Lake.



## LAC DU FLAMBEAU AREA

Northbound Fishing Outfitters

Marty Papke - Guide

7502 River Road

Lake Tomahawk, WI 54539 715-277-3553

The first month of the fishing season has passed and a good one it was! Due to the lateness in our spring, catches of walleye throughout May were quite good.

Let's talk about some upcoming patterns we can use for our June fishing.

**Panfish Action** - Surface temperatures have definitely warmed the waters and fish activity is increasing. Crappies are still very active on all the area lakes. Tiny 1/32-oz and 1/64-oz jigs tipped with plastic tubes or tails have been working really well. Crappie minnows fished on a small hook below a slip-float is another alternative.

Check out **Squirrel Lake** in the bays, especially the one off the boat landing. With the growth of new cabbage weeds in here, it's turning into a hot-spot. **Gunlock** and **Buckskin** are two other choices for crappies and don't forget the Bluegills and Perch. They can usually be found in the same locations as the crappies.

The **Flambeau Chain** has seen some action too. In **Moss Lake** the crappies can still be found in the fresh cabbage weeds and don't forget to check out the brush-cluttered shorelines. **Flambeau Lake** has some perch action just on the drops next to the newly formed weed edges. Small minnows, worms and, if you can find some, wigglers are the top producing baits.

**Bass and Northern Pike** - The bass season, both Large- and Smallmouth, opens the 21st of June, but we can still have some fun catching these great fighters, even though we must release them before the 21st. Bass fishing is really good on a lot of our lakes, but we tend to get locked in on walleye and musky. **Big Crawling Stone** will produce "smallies on the rocks". Use both live-bait and artificial. Use 1/8-oz jigs and leeches or pieces of crawler. Try some of the hot new crawfish crankbaits.

Day in and day out, Northern Pike can be a fish that comes to the rescue. When action is slow, it's always Mr. Toothy that comes along. When fishing for any species, the northern pike always come along and always seem hungry. The entire Flambeau chain is loaded with pike from small ones to bragging size.

Check the narrows in front of the campground on **Flambeau Lake**. Jig and minnows will put live-action on the rods. If you're looking for larger pike, try around Strawberry Island on **Fence Lake**. With the larger forage base on this lake, there are some monsters cruising around these weed beds. **Squirrel** and **Buckskin** are bonus pike waters. If you like action, these two will take care of those dull days.

**Musky Time** - It's time to start throwing those large baits again. What baits you ask? MUSKY BAITS!

Early season musky can be as exciting as any other fishing. Think about using smaller baits at this time of the year. Smaller bucktails and minnow baits would be choices of mine. Musky are plentiful in all of the Flambeau lakes. Food is the key here, so spend a lot of time working the weedbeds. **Squirrel, Buckskin, White Sand** and **Squaw** are all good early producing musky lakes. Check them out, move around and you're sure to catch a "lunge".

**Walleye or June "Eyes" are Nite "Eyes"** - June is a month I start spending time fishing this specie at night. June is still somewhat early in the fishing season and it's not uncommon for these fish to come into the shorelines at night and feed. One approach would be to cast crankbaits or stick balsa baits along the same rocky shorelines and sand and gravel areas that these fish inhabited during their spawning rituals. Time and time again they frequent these shorelines feeding on young-of-the-year minnows and baitfish that are also moving along the edges in search of food. Upon working these patterns, I like to check out the rock-bar and rock reef areas. Remember that night fishing is different than daytime in that you must know the body of water you are planning to fish quite well as we have a safety factor to confront - SEEING..... I use slip-floats with phosphorescent lights on them. Using a small number 6 Tru-Turn hook and baiting it with a medium-size minnow or leech, we are ready. Anchoring is probably the most productive way of covering these areas. The way I work these float-rigs is to cast out to the areas we are fishing and slowly work the bait back to the boat. Spending time in these areas during the daytime definitely helps you in locating exactly where you want to cast and fish.

Lake choices of mine would be **Fence**; look for the long sand and rock bars. With the large amount of forage in this lake it is tough at times to fish but don't let it throw you. Wind is usually a factor on this lake during daytime hours and it usually calms down in the evening. Check out **Pokegama** around the islands where the rocky shorelines are. Look for the deep edges and where they intersect sand or gravel. **Squirrel Lake** is a great lake for night fishing, especially the series of rock bars in the middle of the lake. **White Sand** has a population of walleye that love to come out after dark and feed like crazy. One benefit of night fishing is that you always have a great chance of catching that trophy after dark in that many of your biggest fish never come out until darkness sets in. So, keep your eyes on the light and when it disappears below the water it's time to tighten up on the line and "set the hook".

Always remember it's all right to catch some fish, but letting a few go is good conservation.

### MARTY

#### FREE FISHING DAY

If you like fishing, but don't like paying for license, then try fishing on June 7th. Residents and non-residents can fish for walleye, musky, bass or any fish in Wisconsin without a state fishing license on June 7th. Remember that, even though no fishing license is required on June 7th, all other fishing regulations must be followed.



## Presque Isle - Winchester

Ken Reinicke  
HC1 Box 373  
Presque Isle, WI 54557 715-686-2033

### Presque Isle/ Winchester Fishing Report

They're really shallow or they're really deep!

Fishing in the Presque Isle/ Winchester area has been a contradiction to normal fishing trends. The Walleyes were supposed to be in a post spawning mood in relatively shallow water, 10 to 25 feet deep. However, to remind you that fish don't follow the rules we set up for them I have to tell you that this deduction was **W-R-O-N-G!** We caught half our walleyes in weeds that bottomed out at 6 feet in **Van Vliet**, and the other half in **Presque Isle** in water that was 32 to 38 feet deep. All the Walleyes were caught on leeches. In the shallow water we used thirty-second ounce weedless jigs, in the deep water we used eighth ounce jigs. Color didn't make any difference at all. One day we had a northeast wind that turned the shallow water fish on; the next day, in the same place, a flat calm produced nothing at all. The deep water fish continued to hit, however. That's a trend that we should not forget!

Some good news is that, with the warming temperatures, the Crappies have become active. **Nosseum, Van Vliet, Round, Tamarack, Rainbow**, and the back bays of **Presque Isle** are very good places to search for these fish. Just a Crappie minnow on a super light jig suspended below an ultra-sensitive bobber is the right ammunition. The best places tend to be weed edges, stump fields, or brush piles. It's a hunting situation as far as location goes. Search- search- search for success.

One of the things we all should know, by now, is that Spring Muskies want small, slow-moving baits. I have caught as many Muskies fishing for Walleyes with minnows and leeches (YES, LEECHES!) in the Spring, as I have caught with Musky baits intentionally going after "Old Esos". I'll bet anyone reading this column that if all the people who chase Muskies in the Spring/early Summer period would use a six- to eight-inch Redtail chub on an eighth-ounce jig with a light leader **ON THE EDGES OF WEEDBEDS** in 4 to 10 feet of water they would catch many more Muskies, also. Try it and let me know how you do!

Here's a scoop for you on Smallmouth Bass-**CRAB LAKE!** The best population of good-sized fish to be seen from any area lake in recent memory. TRY IT! Get a hydrographic map from THE JUNCTION, some leeches, some MUD MINNOWS, and give it a shot!

If you can pick your time to fish for Walleyes try **Little**

**Horsehead** shortly before dark. The east shore wood and the southwest shore drop-offs produce. Leeches on slip-bobbers are the way to go.

**North and South Turtle** are giving up some good numbers of fish. Check the D.N.R. regulations for limits. They're different from lake to lake. And in regard to D.N.R. regulations and negotiator George Meier- well, I believe if you can't say anything good about someone or something, don't say anything at all.

Bass season opens June 20. Best advice I have is get a jonboat that you can slide into some of the small lakes in our area and fish from 7 p.m. until 11 p.m. - like **Anne, Katinka, Carlin, South Crab, Red Lake, and Stateline**. In these days of pressure fishing these "out of the way" lakes can provide a pleasurable experience. Remember to release all the fish you're not going to mount. These small lakes can not sustain a quality fishery if the spawners are removed.

Have a great season!

Ken

### CRAPPIE FACTS

Crappie spawning activity peaks in June when water temperatures are between 61 and 68 degrees, though spawning may continue into July. Crappies search out nest spots between 1.5 to 6 feet deep or deeper. They usually nest in colonies that may include as many as 35 nests, 3 inches to 6 feet apart.

Males aggressively defend their nests, chasing and biting intruders. A female may be chased away several times before the male will admit her for spawning. When a pair does spawn, they swim in circles around the nest until they come to rest with their bellies touching and pushing against each other. Both fish quiver as the female releases her eggs and the male releases his milt(sperm). This process is usually repeated several times over several hours. Females may spawn with more than one male and may produce eggs several times during the spawning period. An individual female produces several thousand to several hundred thousand eggs depending upon her age and size. Following spawning, males guard the eggs until they hatch in one to two days at optimum temperatures of 65 to 70 degrees. Crappies grow fairly rapidly in the first year, reaching 2.5 to 3 inches. Crappies can mature in their second year, though most mature in their third to fourth year. In Wisconsin, most crappies don't live much past their fifth year, grow larger than 12-14 inches, or weigh more than a pound.



Additionally, crappie growth rates can be very irregular. Some years, a year class may be smaller than average. Every three to four years the opposite may happen and there will be a year class of larger than average crappies.

The state record white crappie measured 19.5 inches and weighed 4 pounds, 8 ounces. It came from the Gile Flowage in Iron County in 1967. The state record black crappie came from the Partridge Crop Lake in Waupaca County in 1985. It weighed 3 pounds 6 ounces.



**Specials of the Month**  
(for Newsletter subscribers only)  
PRICES GOOD 'TIL 6/30/92



FOR THE  
**WALLEYE FISHERMAN**

100 PACKS OF

**MISTER TWISTER 3"** CURLY TAILS

BLACK - PURPLE - CHARTREUSE - WHITE OR YELLOW

**\$4<sup>29</sup>**

**WEEDLESS JIGS - (PLAIN)**  
1/32 - 1/16 - 1/8

**\$9<sup>99</sup> FOR 50**

**LOOK**



FOR THE CRAPPIE FISHERMAN

**LINDY/LITTLE JOE**



CRAPPIE QUEEN

~~~~~

**TUBE TAILS - 10 PER PKG 99¢**

**69 ¢**

**THE JUNCTION NEWSLETTER**

- THE ONLY NEWSLETTER DEDICATED TO SERVING FISHERMEN EXCLUSIVELY IN AND ABOUT OUR AREA.
- PUBLISHED MONTHLY APRIL - DECEMBER
- FISHING REPORTS AND ARTICLES FURNISHED BY THIS AREA'S FINEST PROFESSIONAL GUIDES.
- FEATURED LAKE OF OUR AREA EVERY MONTH
- SAVINGS ON MONTHLY SPECIALS TO SUBSCRIBERS ONLY.

1 YEAR SUBSCRIPTION \$39.00 2 YEARS \$70.00  
~~~~~

CHARGE ORDERS WELCOME! Visa \_\_\_\_\_ MasterCard \_\_\_\_\_

CARD NUMBER \_\_\_\_\_ Exp Date \_\_\_\_\_

NAME \_\_\_\_\_

ADDRESS \_\_\_\_\_

CITY \_\_\_\_\_ STATE \_\_\_\_\_ ZIP \_\_\_\_\_

MasterCard

VISA

MUSKY HUNTER  
**SPECIAL COMBO**

ST CROIX 5503

PREMIER GRAPHITE ROD

6' - 6'6" - 6'9" OR 7'

WITH A

6500-C3 GARCIA

AMBASSADEUR REEL

AND

YOUR CHOICE OF

27# OR 36# DACRON LINE

**SPECIAL  
COMBO**

**PRICE**

**\$135<sup>00</sup>**

**FOR FATHER'S DAY**

**\$5<sup>00</sup> OFF**

ON ANY

**ROD & REEL COMBO**

OVER \$20.00

WITH THIS COUPON

EXPIRES 6-30-92



JUNE

**21**



**JUNE STORE HOURS**

DAILY 7:00 AM - 7:00 PM

SUNDAY 7:00 - 5:00

The Junction  
HC2 Box 228A  
Manitowish Waters, WI 54545

Call 715-543-2776 or 543-2359





# THE JUNCTION NEWSLETTER

HC 2 Box 228A  
Manitowish Waters, WI 54545



0061  
JAMES BOKERN  
1226 E 20TH ST  
MARSHFIELD WI 54449

4/93

Address correction requested

To Hurley

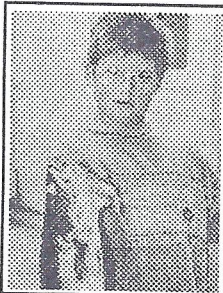
Winchester

Presque Isle

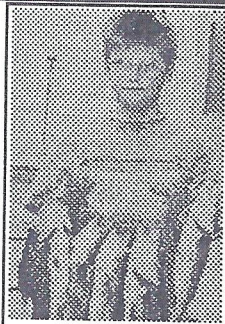


"Come North,  
the fishin's  
great!"

This will make one  
fine fish fry!"



"That is a nice  
stringer of crappies  
Rick. Too bad Aunt  
Pat hasn't learned  
how to use a camera.  
You look a bit silly  
without a head!"



"This is what you  
call a 'mixed bag', a  
nice day's catch."

W

Manitowish  
Waters

W

B

M

Boulder  
Junction

The

Junction

H

Lac du Flam

## ZEBCO U.S. CRAPPIE TOURNAMENT

Manitowish Waters and Boulder Junction are again participating in the ZEBCO/US CRAPPIE TOURNAMENT that began on May 16, 1992. The Tournament will run from May 16, 1992 to June 30, 1992. The entry fee for the 45 day tournament will be only \$6.00.

Manitowish Waters is sponsoring 181 fish with a total dollar amount of \$10,375.00 and Boulder Junction is sponsoring 102 fish with a total dollar amount of \$3600.00

Local winners in the Big Crappie Day event were Annette Tellefson and Roger McClellan.

GOOD LUCK TO EVERYONE ENTERING!

The "Junction Newsletter" is published by Junction Tackle and Gifts, Manitowish Waters, WI 54545, 715-543-2776, during the months from April through December, inclusively. The use of excerpts or reproduction of all or parts of this material is strictly prohibited. Annual subscription rate is \$39.

POSTMASTER: Send address corrections to Junction Tackle and Gifts  
HC 2 Box 228A  
Manitowish Waters, WI 54545

Copyright © 1992