

What's Inside

Guides' Reports
Area Map
Fishing Away
From the Crowd
Monthly Specials

GUIDES DON'T HELP BUSINESSES!



I've been in the sporting goods and guiding business for the past twenty years and have answered thousands of questions for fisher men, women and children. I enjoy helping people learn the proper techniques, locations, types of bait to use under various conditions or seasons, what type of equipment to use, etc. to find and catch fish.

We're also an information center answering questions about resorts, motels and hotel accommodations in the area, as well as restaurants and what they serve, amusement centers, golf courses and things to see and do in the area etc., etc..

The most often asked questions are: Where are the fish biting and what are they biting on? I don't believe in sending people out chasing rainbows, as it's known in the guiding business, when you give people information on where the fish are biting and they're really not biting there at all.

I recently was talking with a resort owner and asked how the fishing was on their lake? Their response was that fishing was quite tough and no one was doing any good. When I mentioned the fact that I had been fishing on the lake and was having fairly good luck, I was told that they would rather I didn't fish their lake and it would be better if people didn't know that the fishing was any good. "Guides don't help our business".

I had never been in a situation quite like this, and I certainly hope that the people I've sent to this resort were not treated as rudely as I was. I politely thanked them for their time and left, but I can assure you that if you ever ask me for a recommendation that you will not end up in a resort owned by people with this type of attitude. Every resort owner in this area is more than willing to give you all the help they can and I'm sure they are glad to see you catch some fish.

Good luck

Bob

WORLD CHAMPIONSHIP MUSKY CLASSIC

16th ANNUAL WORLD CHAMPIONSHIP MUSKY CLASSIC SET FOR SEPTEMBER 11, 12, AND 13.

Expansion of the "contestant only" raffle headlines the the news from The 1992 "Classic". The Board of Directors voted unanimously to increase spending on the raffle in order to thank contestants for participating in the contest.

"The Classic", a Chamber of Commerce and Community Education project, began in 1977 as a means to promote the area and to increase business in the normally slow weekend following Labor Day. From a good start of 269 contestants the "TROPHIES ONLY" contest has grown to 800 participants from as far away as Florida, Colorado, Alaska, and California. The bulk of the contestants hail from the Wisconsin and Illinois Musky fishermen. In addition, the 1991 contest was graced by 72 ladies as well as 38 Musky Clubs.

Contestants may fish on 29 designated lakes in any of four areas including Boulder Junction, Winchester, Presque Isle, and Manitowish Waters. Volunteer landing crews at each site check fishermen in and off the lakes as well as registering any catches. Only two fish have been kept in the last two years from the 118 legal Muskies caught.

An orientation at 8 a.m. on Friday morning at the North Lakeland Elementary School Gymnasium kicks off the tournament with fishing beginning on Friday, September 11th at noon until 7 p.m., Saturday from 7 a.m. to 7 p.m., and Sunday from 7 a.m. 'til 11 a.m. sharp.

An awards presentation will be held at the Presque Isle Community Building at 1 p.m. on Sunday, September 13th where winners will collect their silver trophies and raffle contestants may retrieve their prizes.

The tournament record Musky was 37 pounds, 7 ounces caught by Chicago angler Dave Schnell out of Trout Lake in 1989. Other 30 pound fish were caught by Leon Writz and Jerry Ghiloni.

ENTRY FEE FOR "THE CLASSIC" IS \$10.00 WITH ALL PROCEEDS GOING TO FUND SCHOLARSHIPS AND AREA OUTDOOR PROJECTS.

Call 715-543-2296, 715-686-2033, or 715-686-2558 for entry forms or write "Musky Classic", NLES, HC 1, Box 223, Manitowish Waters, WI 54545. Each contestant must fill out a form with all pertinent information included.

J
U
N
C
T
I
O
N

NEWSLETTER

Quips and Tips from Area Guides

MANITOWISH WATERS AREA

Bob McClellan - Guide - Newsletter Publisher
Junction Tackle and Gift
Manitowish Waters, WI 54545
715-543-2776

July fishing proved to be "tough" in our area this year, but we were certainly not alone. That seems to be the trend all over the midwest. The rotten weather for most of July slowed the fishing, but fishermen had the lakes to themselves with very limited skiing and boating activities. Surface temperatures hit the 70 degree mark on the 25th, which was the highest I'd seen since the 15th of June. Despite all the bad weather, fishermen with patience who continually moved around and tried different locations and baits, were rewarded with some nice catches.

PANFISH

When all else fails - panfish are fun to catch and can make for a great fish fry. No better way to entertain young fishermen when walleye and bass are hard to come by. **Fawn, Clear, and Wild Rice Lakes** were producing lots of gills in the cabbage weeds in July. Wax worms on a small ice fishing jig suspended from a bobber worked the best. In August you'll still find these gills in the weeds as fishermen have been reporting that many of them are still loaded with spawn. Crappies have been slow but give **Little Manitowish** a try in August. Motor around until you pick up suspended fish on your locator and try suspending small minnows on slip bobbers. You could be in for a real surprise. If you like perch, try the outside weed edge in **Clear Lake** with a 1/32 ounce jig and a small white Mr. Twister. You'll catch a number of small perch but also some good-sized ones as well.

BASS

Smallmouth bass have been very active on **Clear, Stone, Rest, Island, Little Star, and Alder**. Walleye fishermen have been catching smallmouth on weed edges with crawlers and leeches and also on rock points and bars around the 8' to 12' level. It looks to me like the smallies aren't going to spawn this year, as almost every fish I've seen is still full of spawn. I highly recommend catch and release this year if you want to see a continued rise in the bass population. In August, these fish will start to drop deeper and you will find a lot more smallies on your deeper rock bars. **Dead Pike** is also a good choice for August, as well as the lakes above. Largemouth bass have been slow on the chain, but both **Gem Lake** and **McKinney Lake** have been very active using mud minnows.

WALLEYE

Walleye fishing was the slowest I've ever seen in the month of July but, despite the weather, if you moved around you were still able to find active walleye. The big problem was consistency. The areas that produced on one day had no fish the next and so went the month of July. Walleye are currently hitting on 1/16 ounce jigs tipped with a leech or night crawler in depths of 12' to 15'. Weed edges in **Clear, Manitowish, Alder, Stone** and **Wild Rice Lakes** are the most productive. Also, the weeds in the channel between **Island** and **Spider** and the weeds at the entrance to the channel to **Rest Lake**. In August, look for the walleye to start hitting on the rocks in **Clear, Rest, Manitowish, Little Star** and **Island**. In the A.M., look for them around 15' to 20' and deeper as the day progresses. Night Crawlers and leeches are your best choices for early August, but don't be afraid to try minnows, as this will soon be the preferred bait. I never used minnows in July, but this year is far from the norm., and minnows proved to be one of the best baits the first two weeks of July. If you like catching fish consistently, you have to cover the field in a year like this. Take a few minnows, leeches and night crawlers and one of the three will always produce.

MUSKY

Fishing may have been slow but the musky have been very active, despite the weather, on the Manitowish Chain. Musky fishermen have been reporting musky at 8' over weeds, 12' to 15' just off the weeds and 30' to 40' suspended off rocks. Eddie baits, Crane baits, Rizzo Wizzes, Tally Wackers, Bucher Depth Raiders, Smity Baits and Sleight Baits, to name a few, have all been producing fish. **Clear, Island, Stone, Spider, Rest, Manitowish, Little Star** and **Dead Pike** have all been showing some great action in July and will continue into August. Many of your larger fish can be found suspended 12' to 20' down over 30' and 40' of water just off underwater structures. August is also one of your prime months for some great surface bait fishing, but bucktails, crank baits and jerk baits will also continue to produce a lot of nice fish.

Good luck and Take a kid fishing,

Bob



THIS IS A PICTURE OF A STORE I DREAMED OF OWNING 35 YEARS AGO!
IT WAS KNOWN AS KARTH'S KORNER, GIFTS - TACKLE - BAIT.
IT'S CURRENTLY KNOWN AS "THE JUNCTION TACKLE & GIFT"

BOULDER JUNCTION AREA

TOM SWANSON'S GUIDE SERVICE

P.O. Box 144

Boulder Junction, WI 54512 715-385-2168

If you're having trouble catching fish this summer, don't feel that you're alone! Lots of other good fishermen are having the same problem.

Two tips for walleyes might help the situation. Nightcrawlers are working much better than leeches and we're finding that the walleyes are in much shallower water than usual for this time of year.

Musky fishing, on the other hand, has been very good; but, not using standard methods. Wisconsin law allows us to back-troll and it really works. Most Wisconsin fishermen are just learning how to troll in this manner. One tip to help with your boat control is to drag a 5-gal. plastic bucket on about six feet of rope off the bow of your boat. This keeps the bow from swinging downwind while trolling crosswind. Most trollers seem to be moving much too fast. My best results have been coming at boat speeds just fast enough to make the bait function. Also, don't hesitate to fish the deep water. Many of my fish are hitting in between depths of 40 and 70 ft. of water but strike at only 18-ft. depth. So, I try to drag one bait at 10 to 12 ft. and a second one at 15 to 18 ft. I've tried deeper-running lures but have not yet had any luck - they'll work better in the fall. Back-trolling really works - try it!

Lake Report -

Escanaba Lake has been producing some nice walleyes. Most fish are being caught on night crawlers fished on a 16-oz. jig through the weeds in 6- to 8-ft. of water. Try the shoreline to the left of the channel as you enter the lake; also, the heavy weeds in the northeast corner of the lake and the grass bed behind the two large islands.

Don't overlook the lake for trophy muskys. Hit the rockbars off the islands as well as the weedbeds. The areas I suggested for walleyes will also hold some very surprisingly large muskys!

Big Muskellunge Lake has been producing lots of walleyes; however, the size has been somewhat small. Sometimes, it's just fun to catch lots of fish even though they aren't large - and, they're great eating!

The south end of the lake is where the action is. Just head straight out from the boat landing and look for weeds in 12- to 14-ft. of water. Evening and cloudy days seem to be the best times. Slip-bobbers work very well here.

Irving Lake has also been producing lots of bass and walleye as well as good musky action. **Irving** is a very shallow lake but most fish can be found around the large springhole in the middle of the lake. When you find 8- to 9-ft. of water, you're there! Stay in the deeper water and cast the shallow edges. A depth finder is very important here so you can follow along the edge of the spring. This springhole holds musky, walleyes, bass,

crappie and bluegills. You never know what you're going to catch!

Remember - whatever the season, practice Catch and Release all year 'round.

Tom



DAVE GRIMES SAYS, "WHO SAID THE FISH AREN'T BITING? WE HAD A DELIGHTFUL DAY CATCHING THESE 5 SMALLMOUTH AND 2 WALLEYE."

LAC DU FLAMBEAU AREA

Northbound Fishing Outfitters

Marty Papke - Guide

7502 River Road

Lake Tomahawk, WI, 54539 715-277-3553

The "Dog Days of August!". We've heard those words for years and, believe it or not, lot's of us believe it! Don't let those dog days get you down, because I can guarantee the month of August can be a fast and exciting fishing month.

What happened to the nice warm weather for our summer season? July proved to be just a little unusual - the word was cold! Fish still seemed to be active, but the patterns changed. By being versatile you could have some pretty good days.

PANFISH—LOCATION THE KEY

On our larger natural lakes crappies have moved to their suspension areas. In other words, they have gone into deeper water areas. Turn your locators on and look for the roaming schools of fish. Perch can be found doing this same tactic. Check out the rock hump areas in **Squirrel Lake** and you'll find perch cruising all over. Try small minnows on tiny hooks and you'll have a ball catching these tasty morsels after they are filleted. The **Flambeau Chain** still has some panfish action going in

(CONTINUED ON PAGE 4)

(CONTINUED FROM PAGE 3)

the coming weeks. Good friends of mine spent a day on **Squaw Lake** and really hit the crappies. That dark water serves to keep them active all year long.

BASS—ON THE ROCKS

Smallmouth are stacking up on the rocks throughout the Flambeau area. Feeding frenzies are occurring on these rocks and crawfish are being the #1 choice of food. August is turning on the downhill side of the year. Lots of these fish are putting on the feedbag already. Casting crankbaits like Rebels "Hot Craw" will drive the bass crazy!

Remember to release the bass you don't intend to eat. This always creates a healthy population for the future.

DOG DAY MUSKIE AND NORTHERN PIKE

Remember hearing August is a slow month because all musky and northern pike lose their teeth. This myth is incredibly wrong! Musky and pike are very active if approached right in August. Two times prove to be best fishing this month. Early, early morning-4:00AM to 7:00AM- and late evening-10:00PM to 2:00AM- Some of your best fishing will occur and the Flambeau area has a choice of lakes that can change your ideas about slow fishing. **Flambeau Lake, Pokegama, Long Interlaken, Big Crawling Stone, and Fence Lake** have some tremendous musky fishing in August. Bait choices; Crank baits, without any question will boat you your share of August fish. Locaton; Weedbeds and edges and look out! Working the rocks should net good results. Surface baits are an exciting bait to throw now. Forget about your other baits and concentrate your fishing pressure with cranks and surface baits. **White Sand** spells big muskies-these tactics will net you good results. Fishing pressure at these times of the day will allow you to spend quality time on these waters without outside boat traffic.

WALLEYES—CHECK OUT THE DEEP WATER AREAS

Walleyes in 40, 50, and even 60 feet of water! Lots of people say, "Impossible!". Far from the truth. Some of the largest schools of walleyes in the systems are found in this deep water. Locating these fish is probably harder than catching them! Lakes such as **Fence, Flambeau, and Pokegama**. It becomes a process of motoring around with your paper graph, L.C.R. or flasher on and specifically look to the deepest water you can find. After locating a school of fish, drop a marker. Seeing how the fish are positioned on the bottom is important. Fish that are off the botom several feet ususally are active and catchable. Live bait rigs, using crawlers and large red tail chubs should activate these fish. A slow, methodical approach is needed because many times you're only fishing a few walleyes. Trust me, this method does work and it's an area where you're usually not bothered because everyone thinks walleyes don't live in water that deep. Check it out.

Versatility is still a key in all fishing. Try new things and good results usually follow.

August may be "Dog Days" but not for fishing because somewhere there are fish biting!

Good luck out there!

MARTY

MERCER AREA REPORT

Phill Graser - Guide

PO Box 99

Mercer, WI 54547 715-476-3570

Summer . . . what's that? Highs, lows, wind and rain, rain and more rain. The air temperatures in the 40's to 60's.

That just about sums up the fishing conditions that faced all of us in the Mercer area during the month of July.

Still, if you worked hard and very carefully fished the good areas, you caught fish.

The first half of July was tough for musky and walleye were almost non-existent. Both largemouth and smallmouth were slow. Northerns were willing but were running very small except on a few of the Natural Lakes.

Even panfishing was tough with the exception of large and jumbo perch.

The second half of July showed signs of improvement in all species except walleye and crappie.

As the month of August begins, we are in the early part of the fall period.

In the **Turtle-Flambeau Flowage** area, look for the **Grant Creek, Beaver Flats** and **Horseshoe** regions to be the best producing spots.

As the water temperature slowly drops you will see good action for musky, northern, walleye and panfish, especially jumbo perch, in these areas. The key weedbeds will be coontail. Look for this type of weed in the shallow bays and on most of the flats areas just off the river channel.

Small crankbaits - medium-size Boonie Baits (with willowleaf blades), #3 or #4 Mepps and medium-sized Rapalas will work well. Jigs in the 1/32-oz to 1/16-oz size tipped with Twister Tails or leeches and fished just over the tops of the coontail beds will also produce for you.

Mercer Lake - Toward the middle of the month, this natural lake should get going with excellent musky, northern and largemouth bass action.

Just work the 4- to 8-ft deep cabbage beds. Spinners and jerkbaits always produce on this lake.

Grand Portage or Tank Lake - A sleeper lake for big walleye. Work the deep edge of the center weedbed with deep-divers or crawlers/leeches. For musky, northerns or bass, throw wood or spinners.

Crappie action is always good but they tend to run small on this lake.

Fischer Lake - All species here, with cabbage and

(CONTINUED ON PAGE 6)

Guest Writer, Chris Lenard
SOLITUDE NORTH GUIDE SERVICE
 Part-time Fisheries Technician for D.N.R.
 4459 Pine Lane, Woodruff, WI 54568

Fishing Away From The Crowd

With over 1300 lakes within its boundaries, Vilas County is truly an angler's paradise. Those looking for peace and quiet but who still demand quality fishing can find it on one of the many small undeveloped lakes sprinkled throughout the county.

Locating these lakes requires a little bit of homework. An excellent source of information would be the Vilas County plat book. A plat book can be purchased at the Vilas County Courthouse or at any of the fine bookstores in the Lakeland area.

Utilizing a plat book to find secluded undeveloped lakes is easy. Start by looking for the lakes completely surrounded by state forest land. State forest land is colored green in the Vilas County plat book. Once you have located a couple of lakes that look promising, check the lake index in the back of the plat book to find relative information such as lake size, depth, fish species present and availability of a lake map. Area lake maps showing bottom contours can be obtained free of charge at the Department of Natural Resources office located on Hwy. J east of Woodruff.

Another source of information on secluded lakes is via word of mouth. If you are staying at a resort, ask the owner or caretaker for advice. Most resort owners possess topographical or county maps and can help in pinpointing and directing you to that out-of-the-way lake. Area bait shop owners can also help but make sure you reciprocate in kind by buying needed gear and bait at their establishment.

Once you have decided upon a lake a little homework is still necessary. Questions still unanswered are, ease of access and motor restrictions. Ease of access will determine what type of boat you will need and motor restrictions will dictate what size or type of motor is allowed. Quite a few small lakes have electric-motors-only rules in effect.



16 INCH SMALLMOUTH BASS CAUGHT AND RELEASED BY JULIE LENARD.

The best way to determine ease of access is to visit the lake first-hand. The plat book may show a road leading right up to the lake but this could be misleading.

Some of the roads in the Northern Highland State Forest have been bermed off to prevent vehicular travel. In most cases, if not all, boats that require trailers will have to be substituted with

a car-top boat or canoe. While at the lake, look for signs posted by the D.N.R. or township dictating what size

gasoline engine, if any, can be used. If not posted, common sense should lead you to decide on the need for an outboard on these small, placid waters.

The fishing on these small secluded lakes can be fantastic. One word of caution is in order, though. Small lakes typically do not have the large numbers of game fish available to allow for a continual heavy harvest. If you catch that bass, northern, walleye or musky of a lifetime by all means keep it but please refrain from hauling out limits of 18-inch bass or 24-inch walleyes, for example. A couple photos of you holding a large fish and then a photo of you releasing it back into the water will bring praise and respect from all those you show it to. As an additional bonus, you can be sure that the next time you visit and fish the lake that lunker will be larger and more fun to catch than the first time.

In order to get you started on your quest for a quiet lake away from the crowd, give one of the following a try:

1. Nixon Lake. 110 acres. 5 foot maximum depth. Species present - Musky, walleye, largemouth bass, smallmouth bass and panfish. Located approximately 5 miles east of Boulder Junction, **Nixon Lake** can be reached by taking Hwy K east from Hwy M. Look for the road with the lake name. This road will cross a large culvert that Nixon Creek flows through. Follow the creek to the east with your boat or canoe and **Nixon Lake** will spread out ahead of you.

By late July or early August the lake is pretty well choked with weeds. This may prevent you from using a motor of any kind. Best bet is to bring along the oars and approach this lake quietly as it is very shallow. Fishing **Nixon Lake** with a weedless rigged with an 8-inch plastic worm or a 4 1/2-inch slug-go should produce on the bass and even the musky if you utilize a wire leader.

2. Frank Lake - 141 acres - 24-foot maximum depth. Species present - Northern, walleye, largemouth bass and panfish. Drive 1 mile north from Hwy N on Hwy M and take a right on Big Muskellunge Lake Rd. Go east exactly 5 miles. Take a left and follow narrow dirt road through a clear-cut to the lake. **Frank Lake** is carry-in only as 4 large boulders block the road that once served as a boat landing. Electric motors are the only type of motor allowed. Best times to fish are two hours before and after sunrise and sunset. Enjoy a relaxing panoramic lunch on one of the islands located on the lake.

3-4 Palette Lake and Nebish Lake - At 173 acres - 65 feet deep and 98 acres - 52 feet deep, respectively, these two lakes offer an interesting smallmouth bass fishing opportunity. Both of these lakes are part of the 5 Lakes Research Project conducted by the D.N.R. A free permit is required and can be picked up at the Escanaba Lake contact station. The 5 lakes project can be found by following Hwy M south of Boulder Junction past Hwy K. Look for the large brown sign on the left side of the road. Follow road in to the station.

Palette Lake requires a 1/2-mile overland carry so a canoe is recommended. **Nebish Lake** can be accessed by those wishing to use a larger boat and trailer. Motors are allowed but keep the speed down to prevent spooking the fish. Both lakes have slot limits and special bag limits so make sure to ask the folks at the contact station for details.

Until next time, set the hook hard, release the fish gently and enjoy the excellent fishing in the Northern Highland Forest!

CHRIS

(CONTINUED FROM PAGE 4)

coontail beds being the key cover. Work the center rock bar next to the deep hole for nice walleye, smallmouth and musky.

Catharine Lake - Weeds, weeds and more weeds! I love it! Musky, northern and largemouth bass. Run 'n Gun here - always some action!

Cedar Lake - Work both the inlet and the outlet for nice-sized crappie and bluegill. Some fair-sized walleye and smallmouth bass around the rock bars.

With weather patterns the way they have been this season, August should prove to be an excellent month for catchin'!

The fish will be in the areas and cover I've mentioned. Work these places over thoroughly and you will catch them.

One last thing - Keep movin' and keep throwin'

PHILL

Presque Isle - Winchester

Ken Reinicke
HC1 Box 373
Presque Isle, WI 54557 715-686-2033



JASON AND H. GORDON SOUDEN OF ARLINGTON HTS AND DES PLAINES, IL.
CAUGHT THESE BASS AND WALLEYE ON JIG & NIGHT CRAWLERS. THE LARGEST WAS 5 POUNDS.

FIGHTING THE NORTH WINDS

As you may know the spring and summer of 1992 have been a constant repetition of front after front going through the area. I live on the south side of Carlin Lake and, as soon as I get up in the morning, I open the living room drapes to see which direction the waves are going on our beautiful little lake. 9 out of 10 mornings this year the waves have been hitting our shoreline! What does this mean? The Bass will be deep and not a bit interested in any bait, the Walleyes will be deep, the Muskies will have their heads buried in the weeds, and your rain suit will be used, not to fend off the rain but for protection from the wind.

But you have to cope with these things if you want fish: so what do we do in Presque Isle and Winchester? Try the "easy" fish. Northerns are the most aggressive fish during the day so go to **Stateline** and use a big Redtail

chub on a one-eighth ounce jig with a 6-inch wire leader. The middle of the day when you have the most sunlight is the best. Fish the weedbeds by jiggling the minnow across the top just fast enough so it doesn't drop into the heavy weeds.

Fish the dark lakes like **Van Vliet** and **Annabelle**. AND BE SLOW IN YOUR PRESENTATION. This kind of weather requires more patience from the fisherman than any other. AND YOU HAVE TO STICK TO IT. You can still end up with a stringer of fish but you'll have to earn them. We fished in the weeds on **Van Vliet** last week with thirty-second ounce jigs and leeches and did just that. The small Northerns in that lake will help keep your attention.

The "**Turtles**" are another good choice. At least there are good numbers of Walleyes there so you have a better chance. Get one of Bob's maps and check out **North** and **South Turtle**. I know the locals who are doing very well there. Try the weeds on **South Turtle** and the rocks on **North Turtle**. Spend the whole day, fish 'til dark and I'm sure you'll do okay.

If you have a small boat that can be dragged or carried to a landing try fishing smallmouth on **Anne Lake** on Highway "P". Lots of fish in there even though they are a bit small. Also try **Katinka**. Some "real good" smallmouth there. **Carlin** and **Rosalind** give up some "wallhangers" every so often so give them a try also. Leeches or small Lindy tails work great. **Cedar** and **North Bass** over toward Mercer are dark, shallow lakes that can also help improve your odds if you're hunting bass. Spinner baits tossed right into the brush and stumps will get the most action. Be careful to retrieve your bait immediately, though - the snags will rob you if you don't!

I'm looking forward to some warmer weather which will definitely help the Musky fishing. I like the deep divers when the water is warm and the weeds are thick. Toss a Bagley, Bomber, or Hellbender parallel with the weeds in **Van Vliet**, or **Rainbow**, or **Round Lake** and reel it in as fast as you can. Get set for some exciting times when that Musky grabs your bait a few feet from your boat!

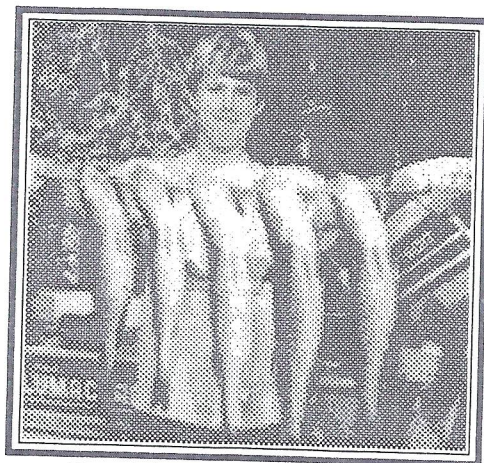
The productive Walleye fishermen are still catching their fish, even with the cold weather, BUT they're doing it in late afternoon and at night. Same slow techniques are working as per usual, but the fish are only feeding for short periods and not as aggressively as usual.

Hang with it. If it was easy, everybody could do it, and then how could we brag when we bring in that nice stringer?

KEN

Specials of the Month
(for Newsletter subscribers only)
PRICES GOOD TIL 8/31/92

Last of the Original
By Jake Satonica
LARGE \$10.00
SMALL \$5.00
Grandma Lures



"It won't be long now and I'll be working to get dolphins instead of walleyes!"

"My Dad doesn't like just any shirt! He wants RedHead Shirts."



CLOTHING 50% OFF
GREAT OUTDOORS

BY **REDHEAD®**

SPECIAL

REDHEAD CANVAS SHIRTS

SHORT SLEEVE \$23.50
LONG SLEEVE \$26.50

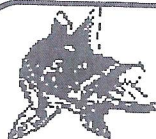
UNPAINTED WEEDLESS JIGS

$\frac{1}{32}$ OZ - $\frac{1}{16}$ OZ - $\frac{1}{8}$ OZ

50 FOR \$9⁰⁰



"Get your musky lures now and be ready for the World Championship Musky Classic."



SPECIAL

MUSK-A-DO
BUCKTAILS \$4⁷⁵
MUSK-A-DO
MAGNUMS \$6⁵⁰

THE JUNCTION NEWSLETTER

- THE ONLY NEWSLETTER DEDICATED TO SERVING FISHERMEN EXCLUSIVELY IN AND ABOUT OUR AREA.
- PUBLISHED MONTHLY APRIL - DECEMBER
- FISHING REPORTS AND ARTICLES FURNISHED BY THIS AREA'S FINEST PROFESSIONAL GUIDES.
- FEATURED LAKE OF OUR AREA EVERY MONTH
- SAVINGS ON MONTHLY SPECIALS TO SUBSCRIBERS ONLY.

1 YEAR SUBSCRIPTION \$39.00 2 YEARS \$70.00



CHARGE ORDERS WELCOME! Visa _____ MasterCard _____

CARD NUMBER _____ Exp Date _____

NAME _____

ADDRESS _____

CITY _____ STATE _____ ZIP _____



AUGUST STORE HOURS

DAILY 7:00 AM - 7:00 PM

SUNDAY 7:00 - 5:00

The Junction
HC2 Box 228A
Manitowish Waters, WI 54545

Call 715-543-2776 or 543-2359



**THE JUNCTION
NEWSLETTER**

HC 2 Box 228A
Manitowish Waters, WI 54545



0061
JAMES BOKERN
1224 E. 1ST ST.
M

4/93

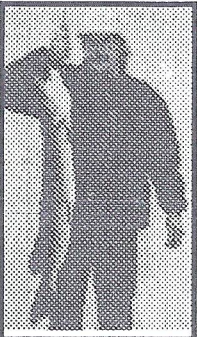
80KE226 7544490203 1692 08/01/92

BOKERN
HC 2 BOX 228A
MANITOWISH WATERS WI 54545-9804

Address:

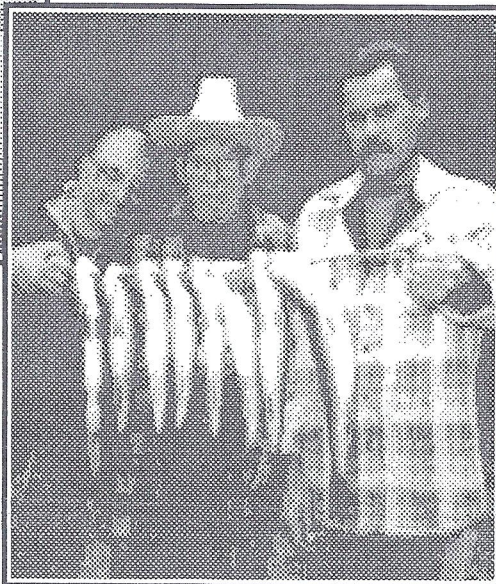


Josh found these 2# Bass in Clear Lake.

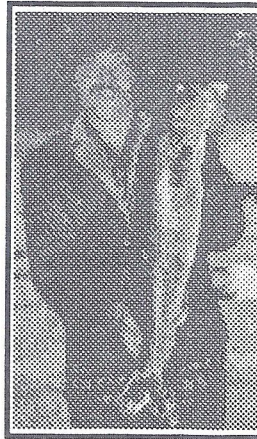


A 11 1/2 # - 38 3/4" 4th of July musky caught by a Brown Deer, WI resident.

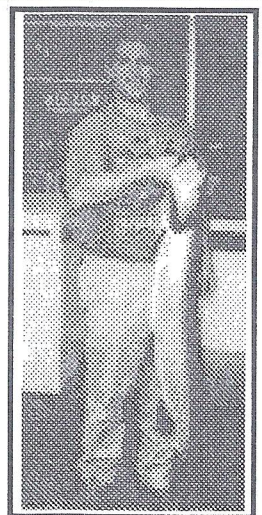
**Who said the
fish aren't biting?**



Paul, Harold and Tom caught this string of fish on Harold's 80th birthday.



This 6# 14 oz "Whopper" caught on a jig & leech came out of Big Lake.



17# - 42" musky caught by a Belvedere, IL resident.

The "Junction Newsletter" is published by Junction Tackle and Gifts, Manitowish Waters, WI 54545, 715-543-2776, during the months from April through December, inclusively. The use of excerpts or reproduction of all or parts of this material is strictly prohibited. Annual subscription rate is \$39.

POSTMASTER: Send address corrections to Junction Tackle and Gifts
HC 2 Box 228A
Manitowish Waters, WI 54545
Copyright © 1992