

## CONFIDENCE DON'T GO FISHING WITHOUT IT!

*Webster defines confidence as a belief in one's own abilities or the fact of being or feeling certain.*

*It's easy to get excited about going fishing and catching fish, but everyone has his good days and his slow days - even me!*

*A fisherman without confidence in his ability to catch fish, or confidence in the area he is fishing, won't catch any fish. You may have the latest in graphite rods, the best reel money can buy, super electronics that pinpoint fish in color and plot the structure for you, but without confidence you won't catch fish.*

*Even on the best water you're going to have slow days. The best fishermen are confident! When they fail, they analyze the situation. Perhaps they did everything right, but the fish didn't cooperate. Give it your best shot. Fish the right areas at the right depth. If you fail, do it again. You'll always connect!*

*Walleyes and other fish relate to weeds in June for both food and cover. If you're fishing a weed bed and see schools of minnows jumping completely out of water on a calm day, you can rest assured that larger fish are in the area feeding on the bait fish. If you're not catching fish where you are, move close enough to cast at the schools of bait fish. You'll be surprised at the number of times you'll find feeding walleye directly under the bait fish. White or yellow twister tails or live bait work great in this situation.*

*Good luck and take a friend fishing.*

*Bob*

## ZEBCO/US CRAPPIE TOURNAMENT UPDATE



"Isn't that a nice batch of crappies, Rickyl!"

You still have plenty of time to set your hook in one of the many tagged crappies that are cruising the waters of the Vilas County lakes. This is a great family tournament ending June 24th!

The Zebco/US Crappie Tournament got off to a great start on May 11th. The weather was hot and so was the crappie fishing!! The first prize for the "Big Crappie Day" went to a lucky angler from Brownsville, WI. His one pound 6 ounce crappie won him the boat, motor and trailer. 2nd prize of \$750.00 went to a 15 year old fisherman from Eagle River. Russ Sleight and Bill Maynard of Manitowish Waters placed in fifth and sixth place, with two nice crappies out of Wild Rice Lake on the Manitowish chain. Nice going guys!

From now 'til June 24, anglers will be fishing for tagged crappies throughout Vilas county. So far, The Junction Tackle has registered 4 tagged crappies. Tom Chapes, Chicago, Illinois caught the first crappie on May 14, it was worth \$25.00. John Rohde of Hometown, Illinois has caught two tagged fish, each worth \$25.00. The first was caught on 5/16/91 and the second was caught on 5/25/91. Dan Fehring, of Allentown, WI caught a \$50.00 fish on 5/22/91. Congratulations! Three other tagged fish have been caught, but the fishermen had not purchased tickets. Sorry Guys!

The tournament runs 'til June 24, and the entry fee is \$6.00. There are still lots of crappies to be caught in this area. In Manitowish Waters alone, there are 250 tagged crappies, seven of which are worth \$1,000.00 each, and there are 243 tagged crappies at values of \$25.00 to \$50.00 each. Plus, who knows where the ZEBCO KID is! That one is worth up to \$25,000.00! So, stop by The Junction, buy your ticket, and hopefully you'll go home a bit richer!



~ ~ **MANITOWISH WATERS** ~ ~

**Bob McClellan** - Guide - Newsletter Publisher  
Junction Tackle and Gift  
Manitowish Waters, WI 54545  
715-543-2776

From the deep freeze to the frying pan best describes our May weather pattern. Despite the cold and the wind, the opening week of fishing produced a lot of walleye and crappie for the fishermen who ventured out.

The walleye action was very good in May on the **Manitowish Chain**. Jigs and minnows were number one most of May, but with the rapid warm-up in water temperatures, leeches and night crawlers are quickly becoming the preferred bait.

**Island Lake** was producing a lot of small walleyes early, but some nicer ones have been taken lately on leeches and floating jigs in 12' to 16' of water.

**Spider Lake** was also good early with jigs and minnows on the rocky shores and points, but now and into June most fish will be caught in the evening or after dark on the rock points and also in the weeds near Cookstove Point.

**Rest Lake** produced lots of walleye in May on jigs and minnows on the rocks at 20' to 24' and also in the snags just north of the boat landing. Best fishing was early in the day or late in the evening. In June use leeches and slip bobbers and fish the snags just north of the boat landing, especially towards evening. The snags on the south side of Fox Island are also a good walleye area with 1/16 oz weedless jigs and leeches. In the evening try the stumps, by the channel mouth, where the **Manitowish River** enters.

**Clear, Wild Rice** and **Alder** will be your best choices for June walleye on the Manitowish Chain. Fish the outside weed edges in all three lakes in 6' to 12' of water with 1/16 oz. fluorescent jigs tipped with a night crawler or leech. Slip bobbers also work well.

**Dead Pike Lake** produced some nice walleye early in the season, as it usually does, on the deep rocky south shore, but after that walleye are usually hard to find until mid June. Due to the dark water, weeds are slower growing and fishing doesn't get good until mid June when the walleyes are relating to the weeds.

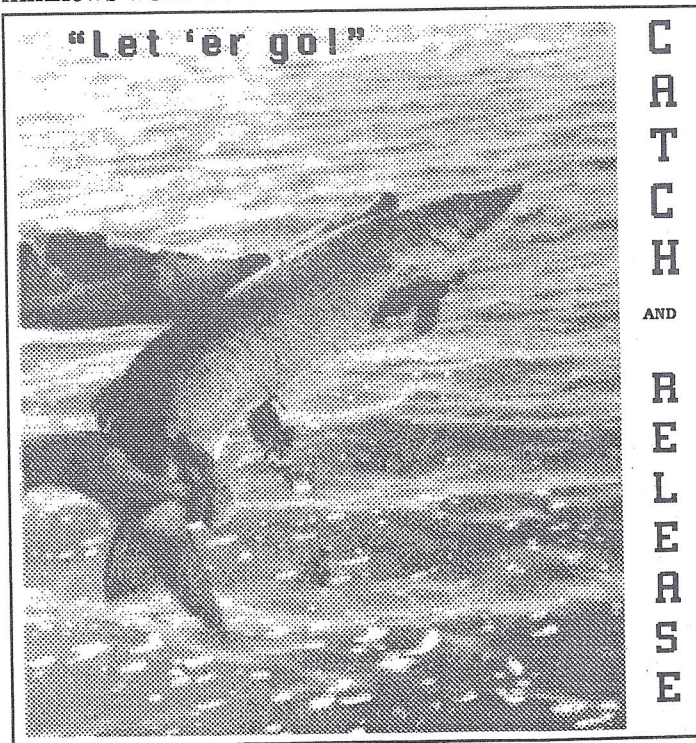
In May crappie fishing was great on **Wild Rice, Fawn, Stone** and **Clear**. The hot baits were 1/32 & 1/16 oz. white, yellow/white, & pink/white tube jigs or 1/32 oz pinkies and; of course, crappie minnows. In June the crappie action will continue in the weeds on **Clear,**

**Fawn, Stone** and **Wild Rice**. Also the **Rice Creek** area and the **Manitowish River** inlet area on **Island**. In **Rest Lake** fish the stumps and snags in the bay off Highway W on the NW end. Don't forget to buy your Zebco US Crappie tickets before you go out. There are over 250 tagged crappies yet to be caught in the Chain.

June is also the best month for crappies in **Dead Pike** and **Circle Lily Lakes** (both are dark water lakes). For crappie in **Dead Pike** fish by the brown and green cabbage where **Dead Pike Creek** enters from the **Powell Marsh** and also the cabbage by the outlet - behind the bull rushes. Another good area is just outside the bull rushes on the SW end. Late in June you will find them by the beaver-fallen trees along the deep south shore line. In **Circle Lily** fish the fallen trees along the south shore and also the cribs and rushes on the SW shore. As for bait I would stick with tube jigs or small minnows suspended on a bobber.

If you're looking for musky I would recommend fishing **Wild Rice, Stone, Fawn** and the weedy bays on **Clear**. Also, the river inlets like **Rice Creek** and the **Manitowish** on **Island** and the **Trout River** inlet areas on **Alder** and **Manitowish**. Small spinner baits like Mepps and Rizzo Wiz and Jigs tipped with 3" to 5" chubs. Small jerk baits like Eddie's, Bobbie's and Smity's also work well this time of year.

If you're looking for bass, June is the month for lots of action. Fish the gravel and sand areas on **Rest, Alder, Clear, Island** and **Little Star** for smallmouth. Leeches, night crawlers and crank baits are all good producers. If you're looking for largemouth try the shallow bays on **Wild Rice, Fawn** and **Stone**. Night crawlers or mud minnows work well.



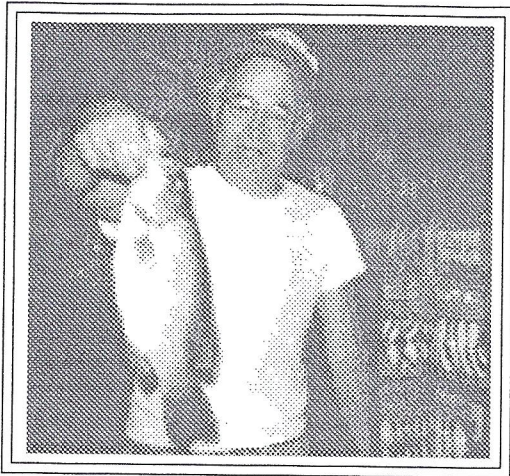
"Let 'er go!"

C  
A  
T  
C  
H  
AND  
R  
E  
L  
E  
A  
S  
E



# Let's Go Fishing

with area guides  
**JUNE FISHING**



## PRESQUE ISLE - WINCHESTER AREA

**Ken Reinicke**

HC1 Box 373

Presque Isle, WI 54557 715-686-2033

### "SHALLOW, DEEP, OR IN BETWEEN!"

Opening day on the **Presque Isle/ Winchester** lakes offered a variety of lake conditions to test the ability of the hardy fishermen who subjected themselves to "Mother Nature's" spring wrath. The wind, rain, and sometimes snow, kept the lakes from being crowded with boats but didn't deter the fish from biting. And they bit shallow, deep, and in between.

The wind slowed the fishing on **Presque Isle Lake** but **Timm's Bay** produced some fish late in the day. The bar protecting the bay and the deep edges of the "timber" in the bay are consistent producers but you have to fish them late in the afternoon.

On **Van Vliet Lake** the Walleyes were in 2 to 6 feet of water along the shorelines. One of my casts landed alongside a log that extended from the bank. It was immediately picked up by a nice two and one half pound walleye that soon was in my net. More shore casts netted more Walleyes and, surprise, two prowling Muskies. One 26-incher came to the boat pretty easily but his 34-inch brother put up a spirited underwater battle before showing his head. Seldom is a 34-inch fish a disappointment but we were all hoping big Walleye on the second Musky. The fish on **Van Vliet** are still in those shallows! That includes the Crappies! They should be there until early June.

**North Turtle** might be the "sleeper" this year. The DNR test-netted that lake and got several hundred Walleyes

in their nets. If you fish it for Walleyes try the deep side of the bar off the south end of the small southernmost island. Deep side during the day, shallower as the afternoon goes by. There's a big "Lunge" out there that will sometimes come up and "make your day!" Give it a try.

**Birch Lake** has suffered through one of those DNR management problems. Last year you could take five Walleyes with no size requirements; this year it's still no size restriction but a two-fish bag limit. Huh? It's still a good Walleye lake! Stop and see Tom and Ginny Roome at the Birch Lake Resort and Campground for all the info you'll need to fish it; cribs, bait, depth, etc. I believe he's got the cooler full, too!

**Oxbow** is warming up fast. Slip bobbers and 2 to 3-inch Redtail chubs are a good idea for some of the "woody" shorelines where the Walleyes are now. Set the stop at about 5-6 feet and throw it right in the brush. Be ready though! If you don't get them out in a hurry, the brush will get your jig!

Look for the fresh weeds toward the end of May or first part of June. If you've got a good depthfinder it'll pick up those thin, new weeds. "Another good reason to buy quality equipment!" Generally they'll be on the north side of the lake first, or any area most open to the sun. These are good areas for all species of fish.

**Round Lake** is "poppin' " the Crappies. Fish any of the weed edges with either a 64th ounce Jig and Crappie minnow, or one of those super light spoons. Come the 25th of May and you'll also pop some of the good Muskies there. Might surprise you.

**Annabelle** and **Little Horsehead** are two more of those lakes that only seem to produce from 3:30 in the afternoon and later. But, if you can arrange your schedule to fish at that time, try them. They're small lakes so you can do a lot of "prospecting" in a short time. If they're hittin', they're hittin'.

Now that the Musky season is open, look for the fish in the shallow water along the weed beds or shoreline timber. A lot of Muskies have been caught by fishermen casting "the wood" for Walleyes and they will still be there. Use some of the minnow imitators in the 5 to 7-inch range. A Countdown Rapala will out-produce a floater but you have to keep it just off the bottom or just above the weed growth. You have to experiment with your "twitches" and retrieves. It's called "payin your dues."

The magic time of year for the big bass will be the first two weeks in June. You'll get the bigger Bass later in the day, or even at night; but, if you know a lake like **Tamarack**, **Stateline**, or **Anne**, be SURE to try it then. A simple jig and MUD minnow will do the trick. This is "Wallhanger" time!





"My favorite fishing month is June."

~ ~ ~ **BOULDER JUNCTION AREA** ~ ~ ~

**TOM SWANSON'S GUIDE SERVICE**

P O Box 144

Boulder Junction, WI 54512 715-385-2168

My favorite fishing month in the Boulder Junction area is June. Most all types of fish are through spawning and the bite is on!

June offers musky activity at it's best. Most musky fishermen talk about fall, but if you're out for musky action, you can't beat June. After a long winter and cold water, musky are hungry. They are still up in the shallows, after the spawn, which makes them easier to find. The weeds haven't become too thick for us to fish, but have enough growth to keep the fish from seeing our boats.

The best baits are still small to medium-size spinner-type baits. I use orange and chartreuse if the water clarity is 4 feet or less. Nickel or brass blades work best if the water clarity is 5 feet or more. I prefer to fish medium-size lakes in early June, such as **Wildcat, Round, Nixon and Fishtrap**. Late in the month you can begin fishing the larger, deeper lakes like **Trout, White Sand and High**.

In Boulder Junction, June is also a great month to catch walleye. Weeds are the key to catching walleye. Fish right in the sparse weed growth or along the edge of the heavier beds in 8' to 12' of water. With water temperatures warming fast, most fishermen have more trouble deciding what to use for bait, rather than where to fish. I use the following general rules: water temperatures below 67

degrees = minnows; temperatures above 67 degrees = night crawlers or leeches. If you are like me and don't like using leeches, don't worry, minnows will be back as soon as the cool fall nights return.

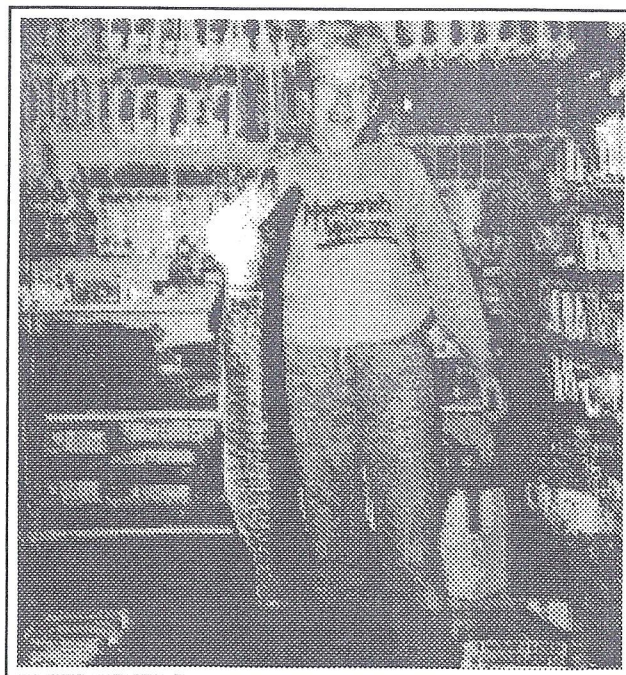
If more continuous action and some fine eating is what you're after, try fishing crappies and bluegills. **Round, Little Crooked and Allequash** offer some of the best fishing in the area. Stick with the weed-beds or shorelines with fallen trees and bullrushes. Once you locate one fish, you can be sure others are in the same location. Bright tube jigs, small minnows or worms are still the best bait to use.

For many years, the northern pike were not greatly sought after or appreciated by anglers. After learning how to properly filet pike, fishermen have found out what great eating the northern pike can provide and how abundant they are in our lakes. For the best action, I suggest using a light-weight, seven-strand leader which will keep these toothy critters from cutting your line. A jig and large minnow work well, as does spinner baits and spoons. Small musky suckers or large chubs, suspended from a bobber also work well on larger pike.

If large northern pike fishing is on your agenda, try the deep weed beds (10 to 20 feet) on upper and lower Trout Lake. The good pike lakes are **Upper Gresham, Mann, Fishtrap, High and Allequash**.

For quality fishing, whatever the season, practice catch and release all year 'round. And don't forget, fishing is fun for everyone.

*Tom*



"Fishing is fun for everyone."



~ ~ ~ **Mercer Area** ~ ~ ~

**Phill Graser - Guide**

PO Box 99

Mercer, WI 54547 715-476-3570

**SUMMER PEAK**

That means the beginning of fantastic fishing in the northwoods. In my area of northern Wisconsin, normally, starting the 7th or 8th of June to the end of the month, most if not all species of fish have completed their spawning activities and have had enough time to recuperate. Now begins a feeding frenzy! When guiding on the **Flambeau Flowage** during this period, my clients and I will catch from 25 to 100 fish per day, using only artificial lures. During this time, I employ a method of fishing that I call "Run 'N Gun".

**"KEEP THROWIN'  
and  
KEEP MOVIN'"**

This simply means I only work fish-holding areas such as weeds, rocks or wood. It also means my clients must be willing to make more casts in one day than most of them have ever made in a week's fishing by themselves. Now don't be scared off by all those casts. Yes it is work but "fun work". There is nothing more exciting than casting an artificial lure and all of a sudden having a fish smash your lure. My attitude towards guiding is that I want my clients to catch the biggest fish in whatever body of water we're fishing on. If we can't move that monster fish, we'll take the next size down. Fishing with artificial lures is a lot of fun, as long as you're catching fish. A really big fish is luck; it doesn't matter who you are or how good or bad a fisherman you are. If you learn what areas fish feed or rest in, then all you can do is be there at the right time and hope one of your casts is close enough to get the attention of that really "Big Fish" and that "She" nails one of your offerings. Until that happens, enjoy catching those small to medium-size fish. Have fun - but "KEEP THROWIN' and KEEP MOVIN'".

As June begins, the **Flowage** will produce all species of fish for you. The **Merkle Lake** area will be hot for jumbo perch, northern, and walleye. Work the wood and rocks thoroughly and you'll do fine. The west shoreline on **Horseshoe** is also a "hot spot" at this time. Crawlers or leeches will now be your best live bait. Artificial lures should be small to medium size. Try the smaller crankbaits, such as Rapala's shallow runners or #1 or #2 Mepps. Also, a real fish producer for you will be Boonie Baits or most other spinner baits in 1/8 oz. to 1/4 oz. size.

Look for the weed beds starting to come up on **Mercer Lake**, then just back off of them about 20 feet and start thrown' in! You'll want to cast to the shallows and bring

your lure or live bait back to you over the deep-edge of the weedbeds. Good northern action-largemouth bass-some musky and good walleye fishing working this way.

**Moose Lake** will show good musky action-some largemouth and northern pike, too!

**Grand Portage** and **Catherine Lakes** will both be very good for largemouth bass, walleye, good northern and fair musky fishing.

**Echo Lake** will start producing some excellent catches of walleye, good northern, good musky and, towards the end of the month, super smallmouth bass.

Around the middle of the month start working for musky on **Pine Lake**. There are some really big fish on this body of water. You just have to wait for the cabbage beds to get up! **Pine** will also show some fine walleye fishing.

June is action month for fishing in the Mercer area. Use either live bait or artificial lures, they all work during June. Remember, work the right areas, weeds, rocks, or wood.

Your Friend in Fishing,

*Phill*





PRICES GOOD TIL 6/30/91

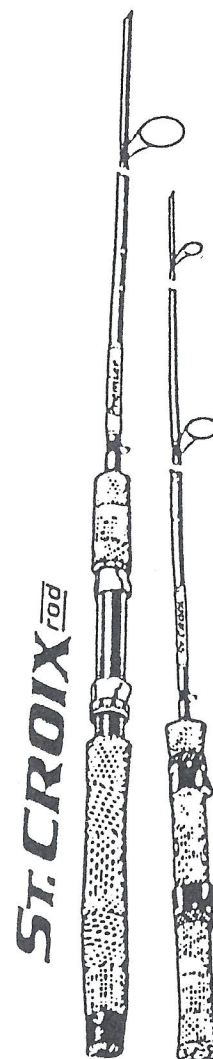
# Father's Day

\$1.90

\$1.49

\$2.99

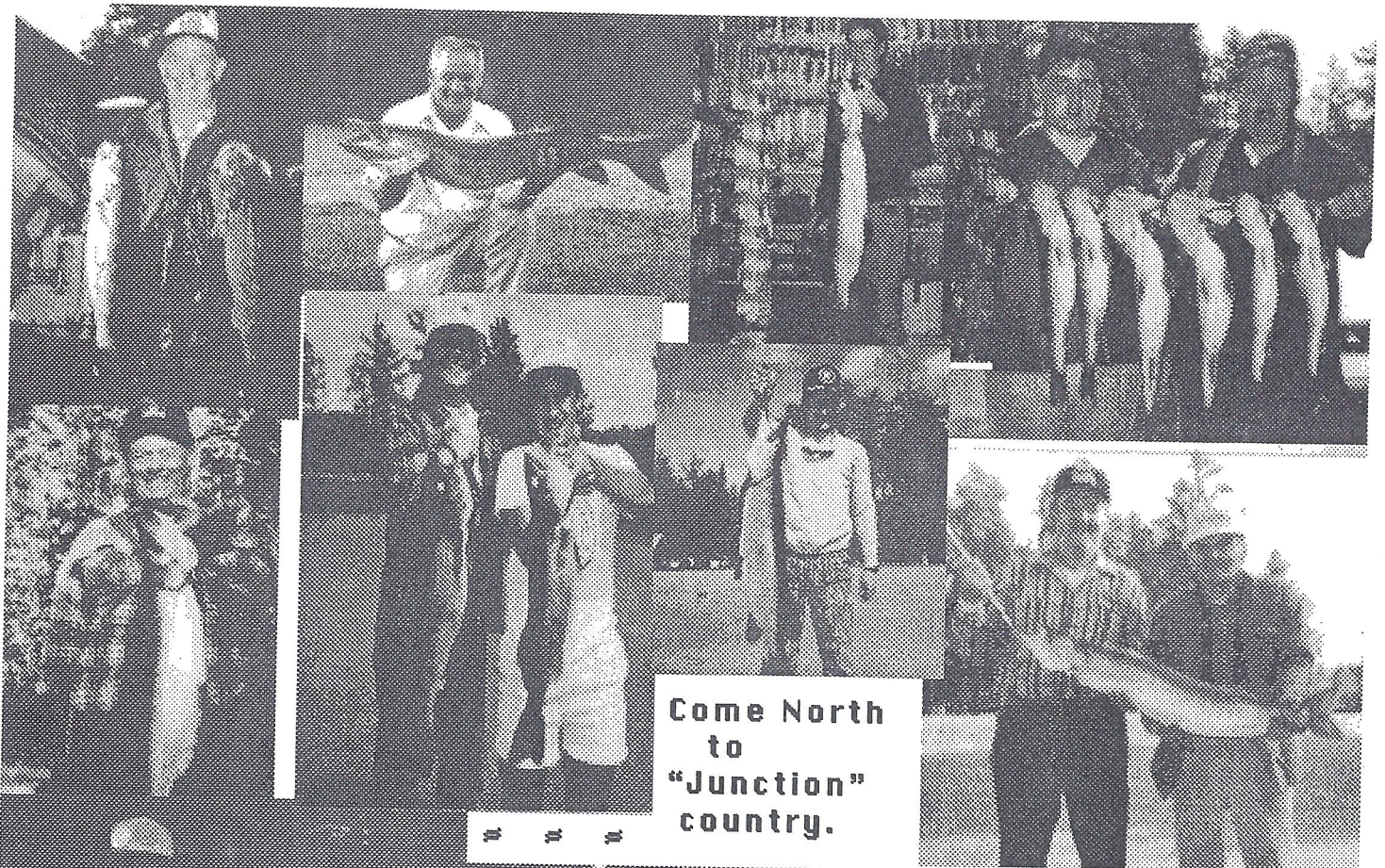
|                 |                |        |
|-----------------|----------------|--------|
| GSC01 - Black   | GSC02 - Perch  |        |
| GSC03 - Walleye | GSC04 - Sucker | \$9.50 |



**SUNDAY 7 AM - 3 PM**

Send order to:  
The Junction  
HC2 Box 228A  
Manitowish Waters  
WI 54545  
\*or call 715-543-2776 or 543-2359

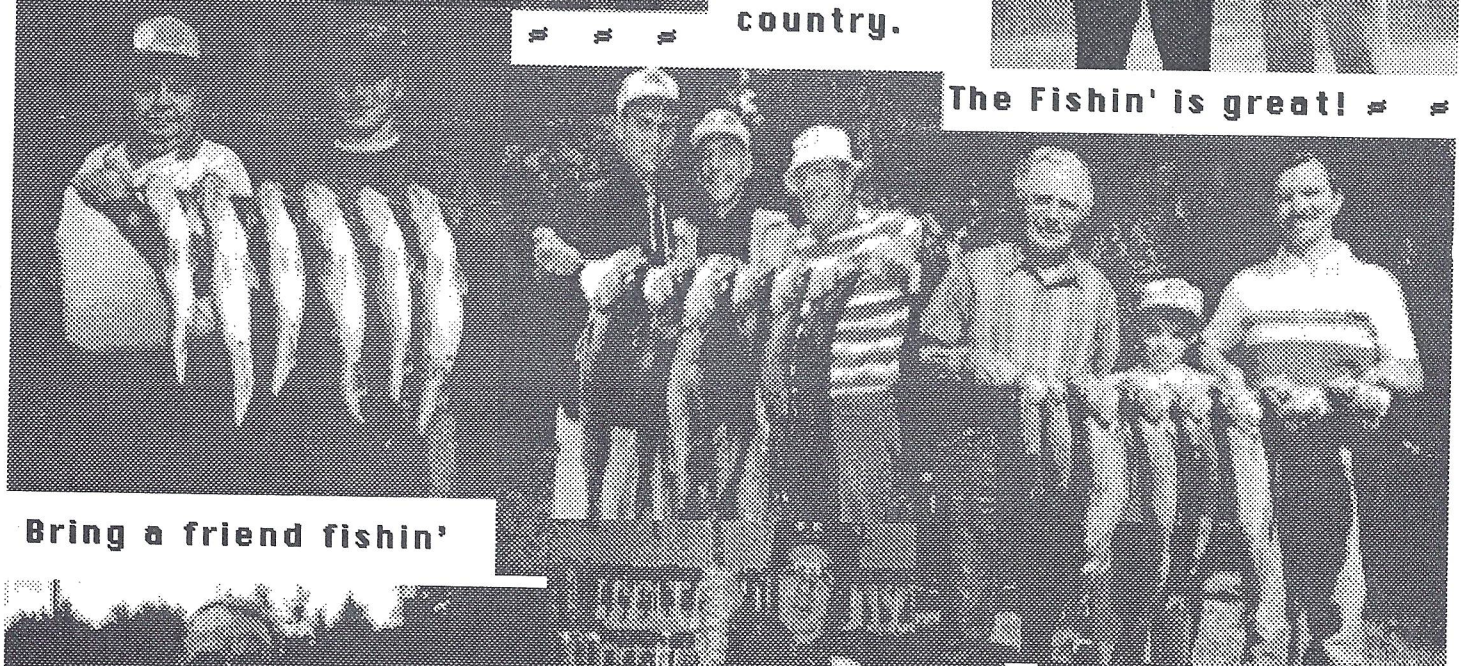




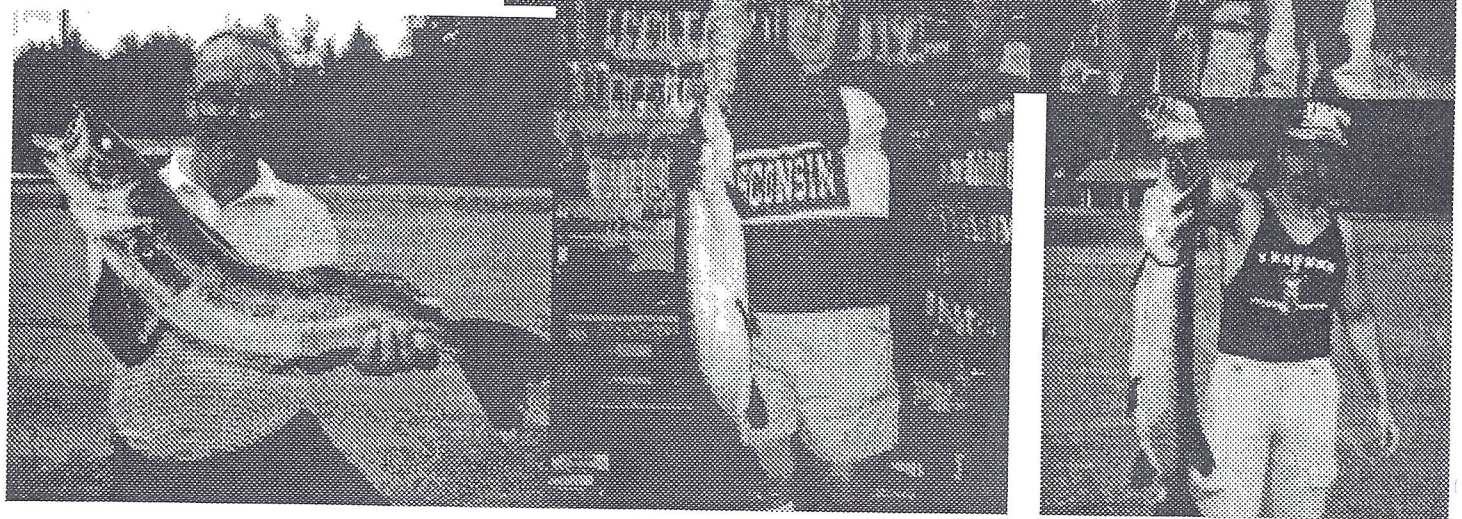
Come North  
to  
"Junction"  
country.

= = =

The Fishin' is great! = =



Bring a friend fishin'





~ ~ ~ **LAC DU FLAMBEAU AREA** ~ ~ ~

**John Beda-Guide**

3425 Hwy 47

Lac Du Flambeau, WI 54548 715-588-9150

The big opening weekend has come and gone and the enthusiasm was evident despite cold rainy weather.

Many walleyes taken were males still "milking" along traditional spawning areas. With the 15" size limit in effect on most lakes, a person had a chance to sort through the smaller males for a fine-looking catch. This is also a good time of the year to bring the old fry pan along for the shore lunch - one can catch northerns, perch, crappies and bass incidental to walleyes and make a fine bonus lunch!

As expected, the **Flambeau** chain produced well along with **White Sand**, **Ike Walton**, **Pike** and **Squaw Lake**.

There were some good panfish catches on **Buckskin**. This lake also produces some large walleye on the edge of the "new" green weeds. This fishing is just starting. We have had some very warm days (85) and the water temp has taken a jump along with weed growth. The best places to fish walleye in mid-May is along coontail weeds in 8 to 17 ft. of water. Wherever you find coontail weed you will find Mr. Walleye. With the rapid temperature rise the fish are starting to hit leeches and crawlers. The reason for this is because the local

hatches of minnows are easy prey for gamefish. There are great numbers of hatch and offering a walleye a steak (leech or crawler) instead of a hotdog (minnow) will improve your catch. Fish the leeches on light (1/32 or 1/16-oz.) jigs or use slip bobbers.

Don't forget to sign up for the Zebco U.S. Crappie Tournament. The entry fee for the remainder of the tournament is \$6.00 per person. Your chances of landing a tagged crappie are lots better than winning the lottery or getting struck by lightning! This is crappie month - sign up!

The lakes to fish in Flambeau during May are the **Sugarbushes**, **Stearns**, **Plummer**, **White Sand**, the **Flambeau** chain, **Squaw**, **Apecka**, **Pike** and **Whitefish**.

Big bluegills and bass are being caught in **Haskell Lake**. Bluegills as big as your hand are common.

The **Flambeau** chain has a great population of northerns which should be fished with 4 to 6-inch chubs and wire leaders. It is best to fish in shallow water with fresh weed growth. **Fence Lake** also produces northerns in the 30" range. This lake should be fished a bit deeper - 10 to 17 ft. range - for these bigger toothy critters.

Many of the smaller lakes produce nice bluegills this time of the year with peak spawning around Memorial Day weekend. Try a fly rod with the old popper fly. There is nothing better than hearing a 12-in. bluegill "suck in" a popper during the evening hours. The fly rod is again emerging so look for it to become the fishing rod of the 90's.

The fishing tip of the month - carry a tube of toothpaste in your tackle box to clean your hands and get rid of the fish smell. It works great for that purpose but also may be used to put a shine on bucktail spinners and spoons.

For the coming musky season, use smaller baits and fish the smaller lakes for bigger fish. Try some of Russ Smith's baits - he makes some great action baits in smaller sizes for this time of the year.

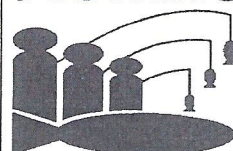
*John Beda*

**FREE FISHING DAY**

Sunday June 2nd 1991

You don't need a fishing license to fish in Wisconsin on June 2nd, but bag limits and all other regulations apply. Residents and non-residents can get out and enjoy the Wisconsin out-of-doors.

**TAKE A FRIEND FISHING**



**NATIONAL FISHING WEEK  
JUNE 3-9, 1991**



**Don't miss the opportunity of partaking in a hearty shore lunch prepared by one of the great fishing gourmets. The fishing trip just isn't complete without such a fine lunch.**



**Russ Smith - Guide**

PO Box 462

Minocqua, WI 54548

715-356-5565

## EARLY SEASON MUSKY TIPS



Just a few tips that will help you in locating and catching some early season musky.

Checking my records of past years I've found that my best musky action was in the shallower and darker water lakes. Look for shallow bays with mud bottoms and also for new green weeds. Warmer water near river inlet and outlet areas are also prime spots. You'll also find large numbers of bait fish in these areas, which helps to attract the muskies.

On lakes that don't have weed cover, try fishing the wood areas. Steep shore lines with beaver cut trees or cedars laying in the water are also good early musky spots. The wood absorbs the sun and thus heats the water around it. Also walleye and other musky prey tend to like this type of cover.

The types of musky baits could cover a wide range, but I recommend the Smity Ruslure with a #5 Colorado blade and also the small Smity jerk bait. This makes a good combo to be throwing if you're fishing with a partner. If the musky are in a negative mood, I'll go with a big game jig tipped with a 4-inch redbait chub or sucker minnow. This really works great when they aren't looking at artificials. I've also caught musky on opening day using a 12" to 14" sucker on a quick set rig.

Last year on June 2nd we caught four muskies on Rus-lur bucktails in 10 feet of water or less while fishing over green cabbage. One of the muskies was a 45" - 27 lb. beauty caught by my client Dan Young. A great way to start the season!

I hope these tips will help you to catch that elusive musky. Try lakes like **Allequash, Little John, Wild Rice, Wild Cat, Van Vliet, South Turtle** and similar type lakes.

*Smity*

## THE STATE OF THE RESOURCE

A \$300,000 report was recently released entitled, *Casting Light Upon The Waters: A Joint Fishery Assessment of Wisconsin Ceded Territory*. Copies of this 101 page report are available from GLIFWC or DNR offices.

The report concluded that people concerned about the fishery resource of northern Wisconsin can be confident that it is being carefully studied and is protected. Chippewa spearing has not harmed the resource. Fish populations in the ceded territory are healthy. Three major factors currently impact northern Wisconsin fisheries: 1) reaffirmation of the Chippewa Tribes as harvestors; 2) heavy angling pressure; and 3) continually changing environmental factors. As a result, popular game fish species such as walleye and muskellunge are subjected to considerable stress.

Available information suggests a number of conclusions concerning the effects of these stresses on the northern Wisconsin fishery. At this time fish populations are not being over-exploited in most cases. For example, the average harvest of walleye does not exceed the agreed-upon maximum of 35 percent of the available adult stocks. In the lakes sampled, tribal spearing harvest of walleye has never exceeded this level. However, overall exploitation in some waters is of particular concern because lakes under 500 acres are more vulnerable to overfishing and environmental pressures than larger lakes. Further studies in such lakes are needed to monitor the effects of harvest levels and management actions. (It's interesting to note that we have 861 walleye lakes in the ceded territory and of these 690 are under 500 acres.) Current fish populations in most cases meet or exceed agreed-upon population goals. In 70 percent of walleye lakes studied, the populations are at or above the established goals. The number of female age classes exceed the agreed-upon goals in all lakes examined during 1986-90. This indicates stable reproductive capacity in those lakes. However, in 30 percent of the lakes, walleye numbers are below desired levels. This indicates that such lakes must receive further study to determine why the numbers are low and to ensure that the lakes are not being over-harvested.

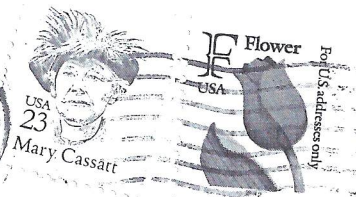
Current information does not allow biologists to draw any conclusions about long-term trends in individual fish populations. While current information indicates relatively healthy fisheries, long-term population trends currently can not be detected. Fish managers recognize that there is a need to establish a reliable mechanism for assessing changes in fisheries and aquatic ecosystems. They have implemented a population sampling program that will monitor long-term trends that are not discernible today.





**THE JUNCTION**  
**NEWSLETTER**

HC 2 Box 228A  
Manitowish Waters, WI 54545

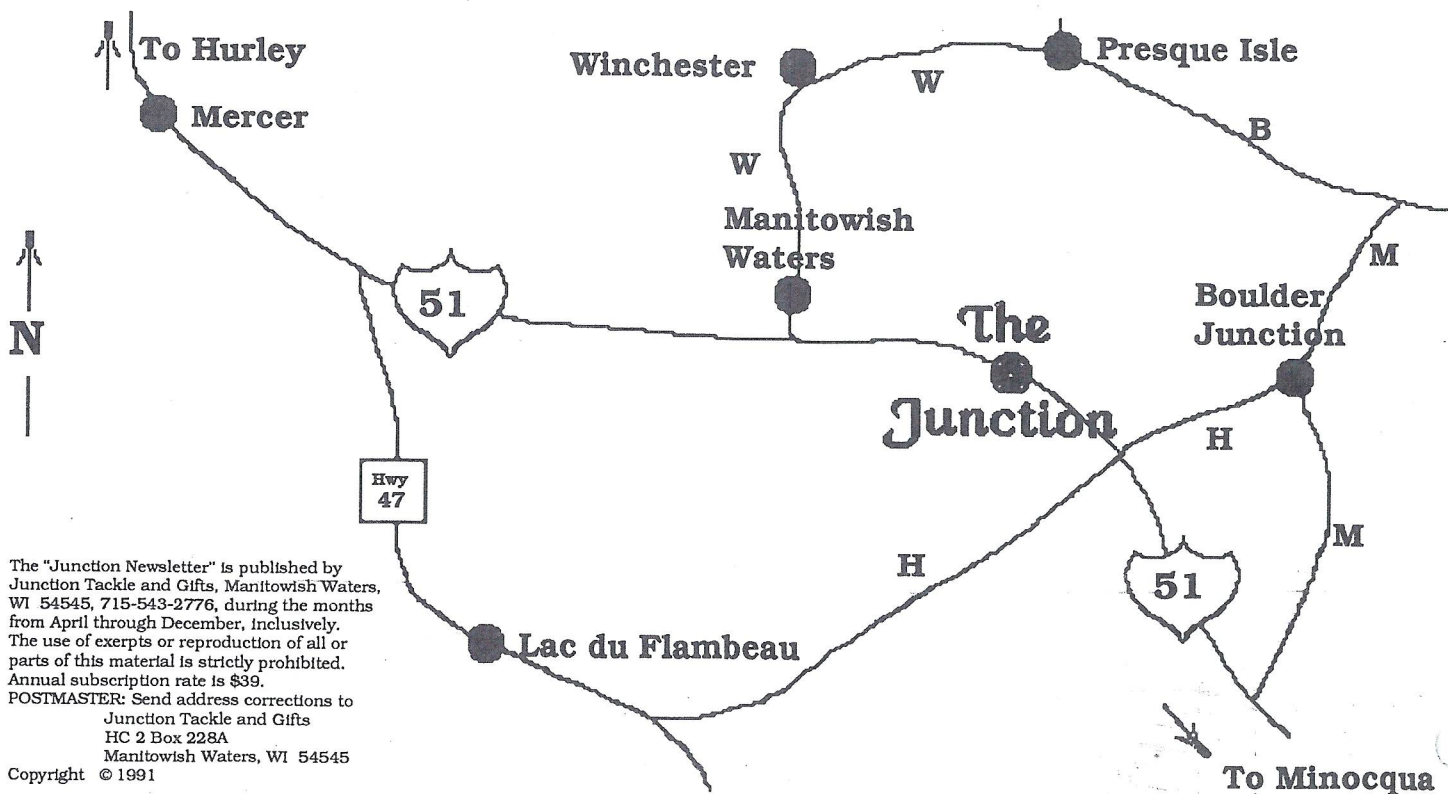


10

Address correction requested

0061  
JAMES BOKERN  
1226 E 20TH ST  
MARSHFIELD WI 54449

4/93



The "Junction Newsletter" is published by Junction Tackle and Gifts, Manitowish Waters, WI 54545, 715-543-2776, during the months from April through December, inclusively. The use of excerpts or reproduction of all or parts of this material is strictly prohibited. Annual subscription rate is \$39. POSTMASTER: Send address corrections to Junction Tackle and Gifts HC 2 Box 228A Manitowish Waters, WI 54545 Copyright © 1991