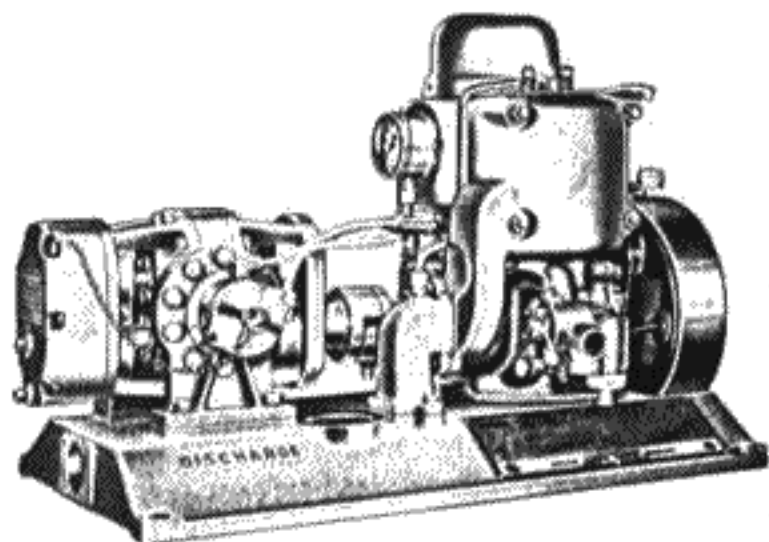


# PACIFIC MARINE SUPPLY COMPANY

## TYPE "Y" PACIFIC PUMPER



### DIMENSIONS

Length . . . . .	24"
Width . . . . .	12"
Height . . . . .	15 1/2"
Net Weight . . . . .	70 lbs.

### PUMPER CONSTRUCTION

**ENGINE:** Two cylinder, two cycle with alternate firing; two impulses per revolution instead of one. Quick starting. Positive action.

**POWER RATING:** 9.8 Horsepower at 4000 revolutions per minute.

**BORE:** 2 1/4 inches.

**STROKE:** 2 inches.

**R.P.M.:** Normal working conditions 3500-4500.

**CYLINDERS:** Two, vertical, parallel, cast in one block of close grained nickel-iron, bored, reamed and honed to exact size. Ample cooling space.

**PISTONS:** "Lo-Ex" alloy Lynite; 3 rings.

**CONNECTING RODS:** Steel, ground to size.

**BEARINGS:** Double roller bearings for crankshaft, needle bearings for connecting rods.

**IGNITION:** High tension flywheel magneto, with two coils and special type breakers for high speed service; maintains correct timing at all speeds.

**STARTING:** Rope.

**CARBURETOR:** Special design and make; float feed. Not a mixing valve.

**LUBRICATION:** Automatic, oil mixed with gasoline. Lubricates all moving parts.

**COOLING:** Water, taken from discharge side of pump.

**MUFFLERS:** Water cooled muffler on engine, expansion chamber in pumper base.

**EXHAUST:** Water cooled. Engine cooling water is mixed with and cools the exhaust as it enters the expansion chamber in pumper base.

**PUMP:** Positive displacement, rotary type, self priming.

**MATERIAL:** Aluminum end bodies, cylinder, legs, gear case and bearing cover. Bronze impellers. Monel shafts.

**SUCTION:** 1 1/2" I.P.T.

**DISCHARGE:** 1 1/2" I.P.T.

**BEARINGS:** Ball.

**PACKING:** Leather type seals.

### PUMPER PERFORMANCE

Pressure . . . . .	100	125	150	175	200	225
Gallons per minute . . . . .	83	59	53	46	40	20

An extremely light-weight portable pumper that has proved its worth and value in fire suppression. Used extensively by the U.S. government, State and private fire protection agencies.

A self contained unit driven by a compact engine of 9.8 h.p., directly connected to a positive displacement pump which needs no priming.

The simplified design makes both power-head and pump completely accessible for inspection and adjustment.

A feature of this pumper is the watercooled muffler cast in the base of the unit. An exhaust cut-out is also provided for use when emergency demands that every ounce of power be utilized.

Weights only 70 pounds. Can be easily and quickly strapped or clamped to a packboard, forming a well-balanced one man load.

### STANDARD EQUIPMENT FURNISHED WITH PUMPER

- 1 1 1/2" x 8 ft. forestry type suction hose
- 1 Aluminum suction strainer, 1 1/2" I.P.T.
- 1 5 Gal. gasoline tank with shoulder straps
- 1 5 ft. Flexible gasoline line
- 1 Metal tool box
- 2 Extra spark plugs
- 2 Starter ropes
- 2 Spanner wrenches
- 1 Oil measure
- 1 Squirt type oil can
- 1 Grease gun
- 1 Feeler gauge
- 1 Pump packing wrench
- 1 6" Screw driver
- 1 8" Pliers
- 1 6" Crescent wrench
- 1 10" Crescent wrench
- 1 Ball pein hammer
- 1 Spark plug wrench
- 2 Pumper record cards
- 1 Service manual

List Price complete with standard equipment \$ .....

## TYPE "YB" PACIFIC PUMPER

Designed especially for use in pumping salt water and therefor recommended for use on docks, in communities, resorts or on estates that are on or near salt water.

The type "YB" pumper is identical in performance and appearance with the type "Y" pumper, differing only as follows: **WEIGHT**—80 pounds net; **PUMP MATERIAL**—Bronze end bodies, cylinder and legs.

Furnished with Standard Equipment as listed for the "Y" pumper with the substitution of a brass suction strainer in place of the aluminum one as listed.

List Price complete with standard equipment \$ .....