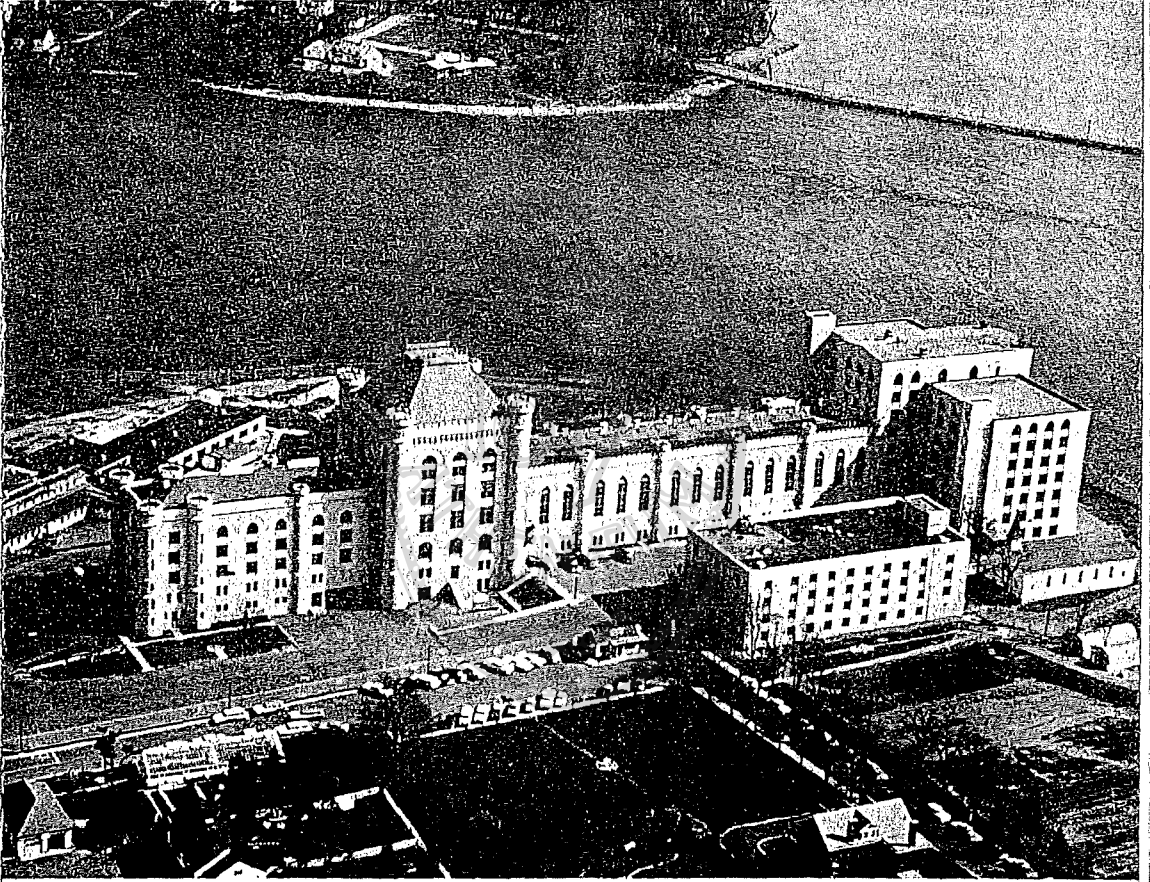


*Portsmouth Naval Shipyard*

# WELCOME ABOARD

OCT 24 1966

1966(?)



**U. S. NAVAL DISCIPLINARY COMMAND  
PORTSMOUTH, NEW HAMPSHIRE**

Courtesy of the Portsmouth Athenaeum, Portsmouth, N.H.

A MESSAGE  
FROM THE  
COMMANDING  
OFFICER



To Our Visitor:

Colonel Roland E. Carey

You are welcome to the U. S. Naval Disciplinary Command as our guest. It is a pleasure to show you our institution and explain our correctional program.

In keeping with advanced thinking in the fields of psychiatry and penology, the Navy recognizes that many of its offenders are people who have personality and emotional difficulties. In former years such offenders were treated according to the penal or punitive concept that punishment in itself was corrective. Experience has taught the fallacy of relying entirely on this concept. Our current Naval Confinement Program recognizes that punishment alone, without recognition of underlying emotional problems and efforts towards development of constructive attitudes and performance, is futile and more often than not intensifies personality and emotional maladjustments. Using an integrated program of work, training and individual treatment, many of our disciplinary offenders are being helped to return to useful military service, or to civilian status as improved members of society.

This souvenir booklet is intended to acquaint you with this institution's historical background, its program and the facilities we have for vocational and educational training and treatment of confinees.

I hope that you have an enjoyable visit and that you will obtain a clear picture of the corrective and rehabilitative aspects of the Navy's confinement program.

Roland E. CAREY  
Colonel, U. S. Marine Corps  
Commanding Officer

## BRIEF HISTORY OF THE U. S. NAVAL DISCIPLINARY COMMAND

The United States Naval Disciplinary Command can trace its origin back to the year 1898 when a prisoner of war camp was established here to confine 1612 officers and enlisted men of the Spanish Squadron destroyed by the American Fleet at the Battle of Santiago during the Spanish-American War. The camp was called Camp Long, so named for the then incumbent Secretary of the Navy, John D. Long. After settlement terms had been reached in September 1898, the prisoners were returned to Spain.

On April 11, 1908 the Naval Disciplinary Command, then called the U. S. Naval Prison was officially commissioned under the command of Colonel Allan C. Kelton, USMC. In these early days prisoners worked at various details throughout the prison and the Naval Shipyard. Two of the early industries included a shoe repair shop and a print shop.

In 1912, under Major George C. Thorpe, USMC, four men were restored to duty, an unheard of occurrence in those times. This was the first indication of what might be accomplished by an organized retraining command for the rehabilitation of prisoners going back to active duty. The following year another forward step was taken when the Secretary of the Navy directed that prisoners be interviewed to ascertain the motives behind their offenses.

A new era in Naval penal administration commenced on November 10, 1917 under the command of Lieutenant Commander Thomas M. Osborne, USN.

He applied the educational principle that "people learn by doing," by establishing a "Mutual Welfare League" through which prisoners could be self-governing. Since the policy of the League necessitated the supervision and control by fellow prisoners, the Marine sentries were relieved of all inside duties. The practice of shaving the head and the use of yellow numbers and "red legs" on prisoners' clothing was discarded. At this time, due to the increase of military offenders during World War I, the prison population rose from 350 in 1917 to a peak of 2295 in 1918. The practice of restoring prisoners to duty continued at an accelerated pace as 2306 men were returned to duty during 1917-1918.

In 1921 Lieutenant Colonel Hamilton D. South, USMC, took over command of the institution. He disbanded the Welfare League

and instituted stricter control by duty personnel because he felt shrewd prisoners were manipulating the self-improvement system to their advantage. Prisoners were dealing with violators in such a manner as to be more cruel than judicious.

During World War II restoration to duty was re-emphasized with the establishment of restoration barracks and a restoration school. Between December 7, 1941 and November 30, 1945, there were more men restored to duty than were issued dishonorable and bad conduct discharges. In order to prepare the prisoners who were being discharged to successfully meet the duties and obligations of good citizens, an elementary school and a vocational training school were established in 1945. The highest count, 3088 prisoners, occurred in April 1945 and was again recorded in August 1945.

The year following the war saw the redesignation of the U.S. Naval Prison to the U.S. Naval Disciplinary Barracks. Under the Uniform Code of Military Justice, which went into effect on May 31, 1951, the institution's name was again changed, this time to the U.S. Naval Retraining Command. Since the code provided for confinement of Special Courts-Martial prisoners as well as General Courts-Martial prisoners, the population again gradually increased. Consequently, the command acquired a former Army site, Camp Langdon, located in New Castle, New Hampshire, and opened it on April 2, 1954 to implement the command's restoration program for confinees returning to duty.

Under the direction and guidance of Colonel Charles Rigaud, USMC, (1958-1961) an extensive program of treatment and counseling was implemented. The purpose of the program was to assist all inmates to recognize their problems and to work toward an eventual solution. On September 30, 1960, the Navy relocated its retraining program to major naval brigs throughout the country and overseas. Camp Langdon was closed and the command changed its name to its present day title - the U.S. Naval Disciplinary Command.

## PHYSICAL PLANT

The institution has natural advantages of security. Located on what was formerly an island now joined on the West to the Portsmouth Naval Shipyard, it is surrounded on all other sides by the waters of the Piscataqua River. The reservation is twenty-seven acres in size. There is no wall, but a fence eight feet high completely encloses the institution proper.

The central portion of the main building was erected when the institution was first established. It is castle-like in appearance with towers on the corners, hence, the origin of the term, "The Castle." To the main building have been added a North Wing, also castle-like in appearance, and more recently a South Wing, of modern design. Within these buildings are located the administrative offices, library, theatre, gymnasium, receiving unit, a print shop, classrooms, medical and dental clinics, a cell-block composed of three hundred and seventeen inside type cells and eight dormitories, each with a maximum housing capacity of one hundred and fifty prisoners.

Additional buildings house the command's industries, shops and vocational training classrooms. There is a chapel inside the compound to meet the religious needs of the prisoners. Outside the fence enclosure is a well equipped building designed to accommodate the visitors of the confinees. Military personnel assigned to duty at the command occupy a modern building in which are located various recreational and sustaining services.

## PRISONER TREATMENT

Comparable to the system of parole selection and supervision maintained by most civil institutions, certain prisoners confined here earn the privilege of restoration to duty and the opportunity thereby to erase the stigma of former mistakes in judgment in military service by working for a discharge under honorable conditions. The local Clemency and Restoration Board considers each case at prescribed, periodic intervals with the following in mind: the interest of the man concerned, weighing the merits of his adjustment to confinement; an understanding of his personality characteristics and basic motivating factors; the requirements of that branch of the service; and obligations to society in general. It is the hope of restoration to duty or early release, shared by the many men, and the fact that all men confined here are accorded decent and fair treatment, that contributes largely to the high morale generally found among the prisoner population.

The U.S. Naval Disciplinary Command seeks to accomplish its objective, prisoner adjustment, through the media of good living conditions, constructive work, academic and vocational training, and counseling. Incarceration, per se, as a punitive measure is a secondary consideration of this institution. In its personnel, policies, procedures of operation and physical facilities, the institution is admirable equipped to achieve its goal.

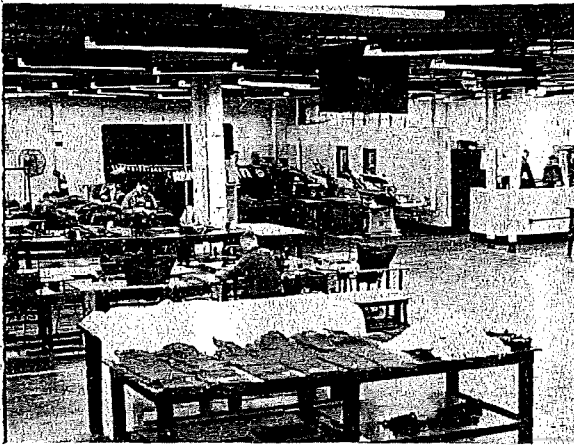
The Disciplinary Command employs a graduated system of diminishing custody and supervision over the prisoner population. The Classification and Assignment Board, with its attendant full development of individual case histories and periodically scheduled progressive study of each individual's case during the period of confinement, is the mainspring of the institution's supervisory procedure. It is this Board that outlines and directs the individualized treatment program in each case and modifies it from time to time as indicated in the interest of the prisoner's adjustment. The detailed information concerning each prisoner's social background, interests, and future plans necessary for such treatment planning, as well as in all other considerations extended him as an individual, is obtained principally during the first two weeks of confinement. This period is known as the "screening program," which is divided into the Admission Phase, Information-Oriented Phase, and Classification and Assignment Phase.

During the first, or Admission Phase of the program, the confinees are issued the necessary health and comfort items, photographed and fingerprinted, and are placed in segregated quarters. Then, in the Information-Oriented Phase, they are acquainted with the services, facilities and programs available and are indoctrinated in the rules and regulations with which they are expected to comply. The "screening" process ends with the classification and assignment of prisoners. The Classification and Assignment Board, made up of three staff members, studies each confinee's social and psychiatric history, which has been compiled by trained staff personnel. The Board interviews the prisoners and assigns them work details, quarters (cell-block or dormitories), counselors and professional treatment if needed. In addition, it gives each inmate a custodial classification of maximum, medium or minimum security. The confinees then join the general working population.

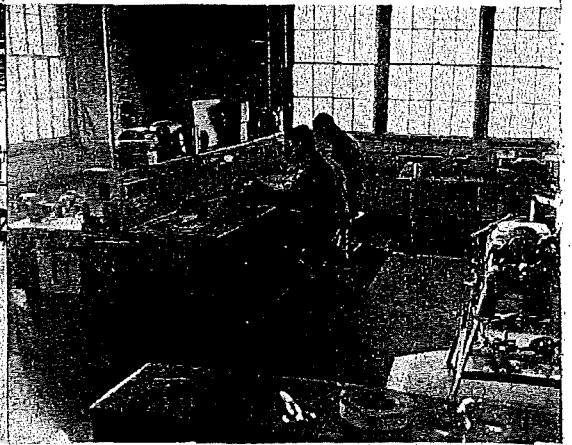
Assignment to work details may be to any of the following:

Photographic Laboratory	Upholstery Shop	Barber Shop
Metal and Welding Shop	Electrical Shop	Paint Shop
Clothing Renovation	Carpenter Shop	Print Shop
Refrigeration Shop	Plumbing Shop	Commissary
Typewriter Repair	General Labor	Laundry
Clothing Factory	Clerical Work	Garage
	Machine Shop	

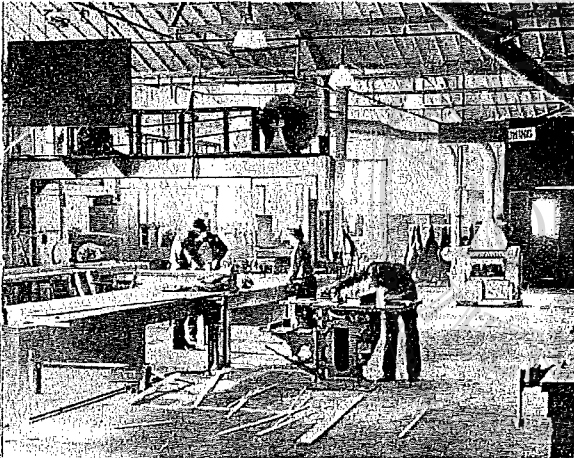
Vocational Training is formally and informally carried out in all the above shops, and the command is fortunate to have on its staff



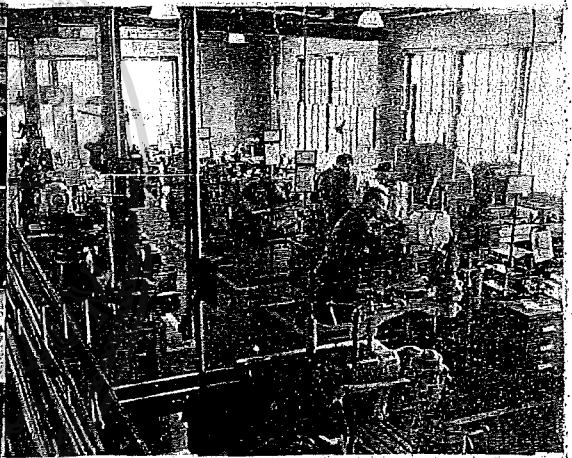
CLOTHING FACTORY



ELECTRIC SHOP



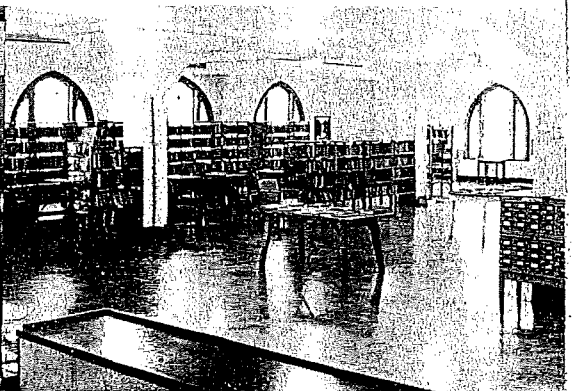
CARPENTER SHOP



MACHINE SHOP

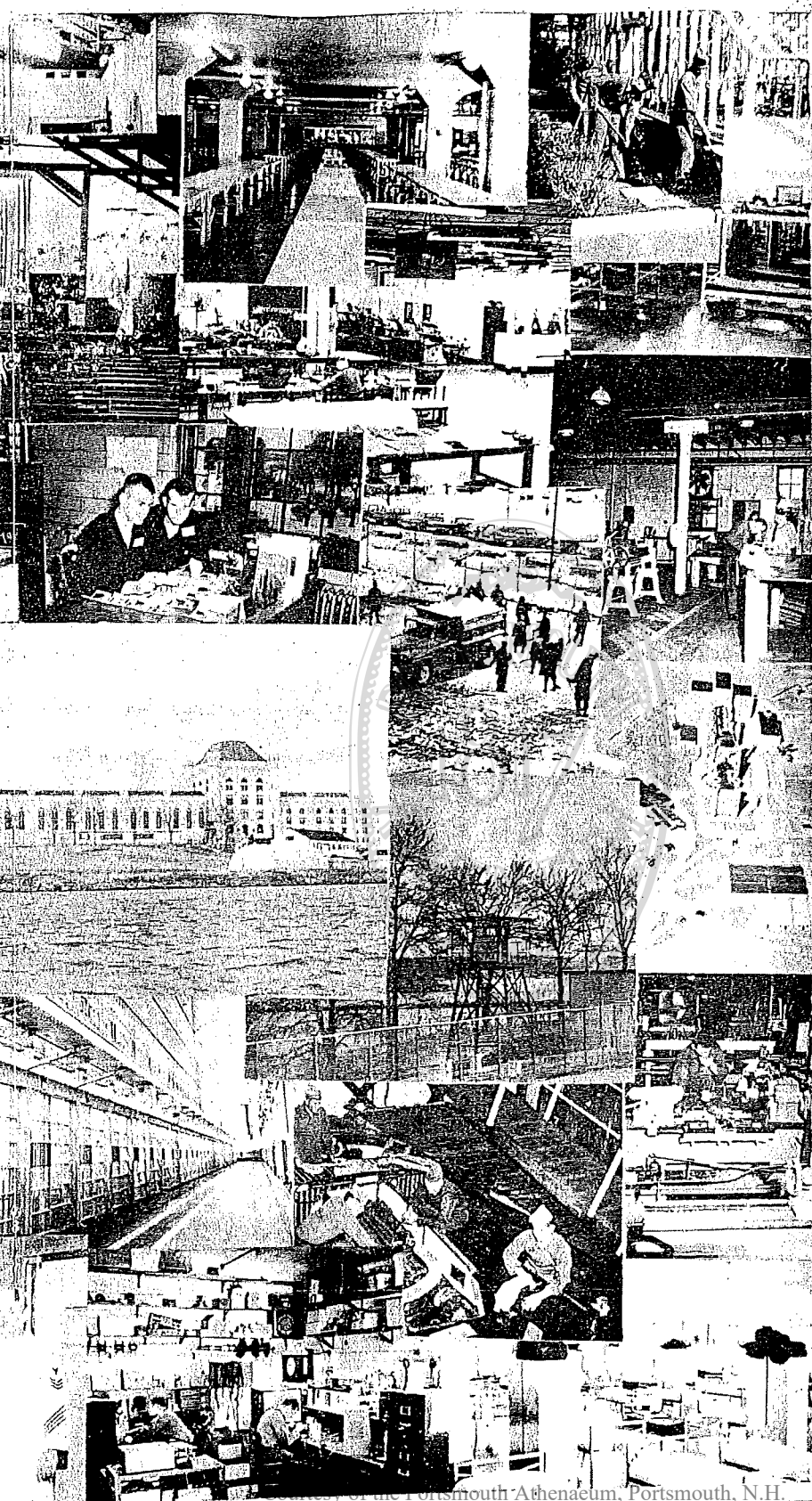


PRINT SHOP

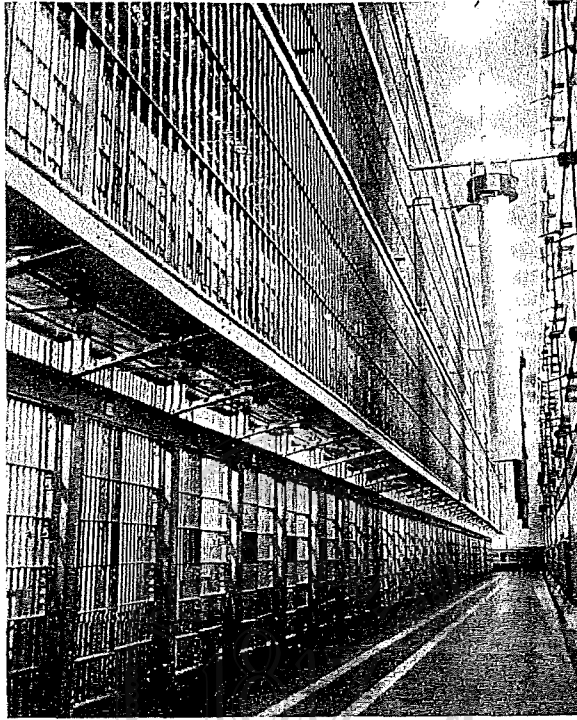


LIBRARY





Photography of the Portsmouth Athenaeum, Portsmouth, N.H.



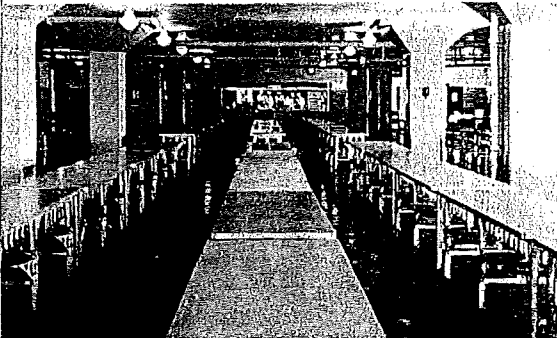
CELL BLOCK



SQUADBAY



CLASSROOM



MESS HALL

of the Portsmouth Athenaeum, Portsmouth, N.H.

qualified civilian and Navy instructors to teach such courses. Certificates of Achievement are awarded as tangible evidence of new skills to the men who successfully complete a course of instruction.

Whenever possible, confinees are given progressively greater freedom of action and the opportunity to exercise greater initiative in preparation for eventual restoration to duty or discharge to civilian life. The prisoners normally have the opportunity to be reclassified from maximum custody to medium custody or from medium custody to minimum custody, and may be reassigned to work detail and quarters (from the cell-block to dormitory). Those whose conduct and work record warrants it are extended the privilege of living in Honor Company, where living conditions are somewhat better than those of the remainder of the confinee population.

Emphasis is laid upon education in the adjustment program. Academic achievement through the 6th grade is required prior to assignment to a work detail. For this reason the command operates a remedial elementary school. In addition, a voluntary evening study program offers high school level classes in such courses as English, mathematics, history, government and typing.

Correspondence courses at high school and college levels are very popular. An evening study hall is operated for all confinees who wish to obtain assistance in their courses. The command is fortunate in having been designated a USAFI Testing Section with facilities to administer high school and college level General Education Development tests. Numerous prisoners have earned high school diplomas and equivalency certificates at this command and find them very valuable in seeking civil employment.

The normal working day is from 7:30 - 11:45 A.M. and 1:00 - 3:30 P.M. The evenings are free for after-hours activities which include gym or outdoor recreation, library call, movies, hobby shop work, educational classes, religious programs, or relaxation in the quarters. Everything possible is done to stimulate interest in after-hour activities. The command library contains nearly 10,000 books, with new ones being constantly added. Adequate equipment is available for sports and recreational activities. Year round organized intramural competition between confinees is held in sports appropriate to the season. The "Castle Courier," the institution's monthly publication, offers the men excellent opportunities for literary self-expression and training in the rudiments of journalism. In these and manifold other ways the U. S. Naval Disciplinary

Command attempts to create and stimulate a high degree of social, intellectual, and emotional self-sufficiency in its confinees.

One other program for the confinee is the Restoration School. This school is set up for the confinee who may be returned to duty, whether it be by the recommendation of the Administrative Separation Board, Field Board, or the Clemency and Restoration Board. This program provides school activity, more intensified counseling, and supervised work to better prepare the confinee for his return to duty.

During confinement, an attempt is made to assist the confinees by providing the type of counseling thought to be most beneficial to them. The counseling available includes: professional therapy (individual and group) by staff psychiatrists and psychologists; group counseling by lay personnel; individual supportive counseling by lay personnel; and liaison counseling by the inmates' supervisors to help confinees with day to day problems. Confinees may also obtain assistance from staff members as the Chaplain, Education and Training Officer, Red Cross representative, and Legal Officer.

The prisoners not already scheduled for discharge appear before the Administrative Separation Board. This board reviews the cases, interviews the confinees, and then makes a recommendation to the Commanding Officer as to whether the prisoner should return to duty or be discharged administratively. Inmates whose court-martial sentences include punitive discharges will appear before the Clemency and Restoration Board. If they do not desire a chance to return to duty, they must specifically waive their right to request restoration. Should they desire to return to active duty, the Board will make a recommendation as to whether or not they should be restored. In either case, final disposition rests with the Naval Clemency Board, in Washington, D. C.

All confinees who are to be released, either restored to duty or discharged from the service, are transferred into the pre-release program one week prior to their scheduled release date from the institution to undergo this final and specialized training for return to duty or civilian life. During this period there is a job placement program in operation to assist discharges in successfully bridging the difficult transition from confinement to civil life. Inmates are routinely interviewed and counseled by a representative of the New Hampshire Department of Employment Security prior to their separation. They are provided with employment application forms

and letters of introduction to the counselors in the local State Employment Office nearest to their home towns. The pre-release training program also includes a number of lectures designed to prepare the discharges for return to civilian life, stressing the responsibilities of citizenship.

Upon release from confinement the discharges don their civilian clothes, or a few their service uniforms, and, in towns, and cities across the face of the nation, embark on a new phase of their lives; a phase that we hope will reflect beneficially the efforts of our staff. Our confinement programs, aimed at the needs of the individual, should in a great majority of cases result in improved physical, emotional and spiritual well being. The measure of success these young men attain as a result of their confinement experience is the Naval Disciplinary Command's contribution to our nation's growth and to their own and their families' future happiness.



**CHRONOLOGICAL RECORD**  
of  
**COMMANDING OFFICERS**

**U. S. Naval Prison**

Col. Allan C. Kelton, USMC	April 11, 1908 — Sept. 9, 1908
Maj. Henry Leonard, USMC	Sept. 10, 1908 — Aug. 18, 1911
Capt. Julius S. Turrill, USMC	Aug. 19, 1911 — Sept. 12, 1911
Maj. George C. Thorpe, USMC	Sept. 13, 1911 — Nov. 29, 1914
LtCol. Abertus W. Catlin, USMC	Nov. 30, 1914 — Sept. 10, 1916
LtCol. Harry Lee, USMC	Sept. 11, 1916 — July 26, 1917
Capt. Lowry B. Stephenson, USMC	July 27, 1917 — Nov. 9, 1917
LCdr. Thomas M. Osborne, USN	Nov. 10, 1917 — Mar. 16, 1920
Commo. Albion V. Wadhams, USNRF	Mar. 17, 1920 — July 4, 1921
LtCol. Hamilton D. South, USMC	July 5, 1921 — June 5, 1925
LtCol. Robert O. Underwood, USMC	June 6, 1925 — June 26, 1928
LtCol. James K. Tracy, USMC	June 27, 1928 — Mar. 10, 1929
Maj. Frederick R. Hoyt, USMC	Mar. 11, 1929 — Sept. 5, 1929
Col. Thomas M. Clinton, USMC	Sept. 6, 1929 — June 30, 1930
LtCol. Joseph A. Rossell, USMC	July 1, 1930 — Aug. 11, 1934
Col. John R. Henley, USMC	Aug. 12, 1934 — July 22, 1935
LtCol. Tom D. Barber, USMC	July 23, 1935 — May 27, 1936
Col. Robert L. Denig, USMC	May 28, 1936 — June 6, 1939
Maj. George H. Morse Jr., USMC	June 7, 1939 — June 25, 1939
Col. Alphonse DeCarre, USMC	June 26, 1939 — May 28, 1941
Maj. Maxwell H. Mizell, USMC	May 29, 1941 — June 23, 1941
Col. Joseph A. Rossell, USMC	June 24, 1941 — June 16, 1945
Col. Samuel A. Woods Jr., USMC	June 17, 1945 — Mar. 31, 1946

**U. S. Naval Disciplinary Barracks**

Col. Nels H. Nelson, USMC	Apr. 1, 1946 — Aug. 1, 1947
Col. Julian N. Frisbie, USMC	Aug. 2, 1947 — Oct. 31, 1948
Col. Reginald H. Ridgely Jr., USMC	Nov. 1, 1948 — Jan. 19, 1951
Col. Thomas G. McFarland, USMC	Jan. 20, 1951 — May 30, 1951

**U. S. Naval Retraining Command**

Col. Thomas G. McFarland, USMC	May 31, 1951 — Aug. 31, 1952
Col. Presley M. Rixey, USMC	Sept. 1, 1952 — June 30, 1956
Col. Paul D. Sherman, USMC	July 1, 1956 — July 31, 1958
Col. Charles A. Rigaud, USMC	Aug. 1, 1958 — Sept. 29, 1960

**U. S. Naval Disciplinary Command**

Col. Charles A. Rigaud, USMC	Sept. 30, 1960 — Feb. 28, 1961
Col. Robley E. West, USMC	Mar. 1, 1961 — June 27, 1962
Col. Roland E. Carey, USMC	June 28, 1962 — June 3, 1965