

1970



# Manitowish Waters

in the beautiful  
**WISCONSIN  
NORTHWOODS**

**Where Vacation Days  
are Happy Days**

Price  
25¢

Published by the  
MANITOWISH WATERS CHAMBER OF COMMERCE ● MANITOWISH WATERS, WISCONSIN



**Come in  
Spring,  
Midsummer  
or Fall**

**ANYTIME IS A GOOD TIME  
TO VISIT THE FAMOUS  
MANITOWISH WATERS REGION**

An altitude of over 1600 feet above sea level insures cool, restful nights even after the hottest days.

Persons suffering from hay fever, asthma or sinus trouble will find immediate relief in our region.

Good drinking water is another thing for us to boast about. Nowhere in the entire country will you find any better. Every resort must display a state test card.

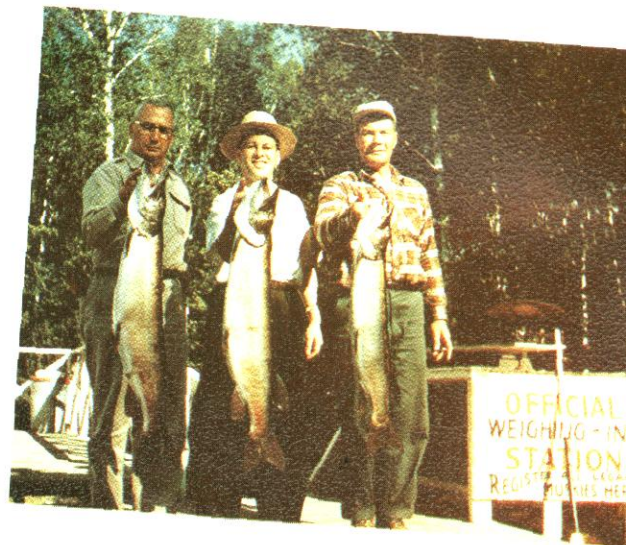
There are many nice bathing beaches in the Manitowish Waters area.

Berry picking, too! Blackberries, blueberries, raspberries, wild strawberries, June berries and choke cherries.

Perhaps you like mushrooms with your favorite meat dish. If so, just come up in mushroom time and you'll get your fill.

Hunting in season. Deer, bear, goose, duck, grouse, rabbit.

Bring your camera. You'll be amazed at the opportunities for snapping very unusual and beautiful scenes.





# Welcome to Manitowish Waters...

**HONEYMOONERS**

**FISHERMEN**

**NATURE LOVERS**

**SPORTSMEN**

**FAMILIES**

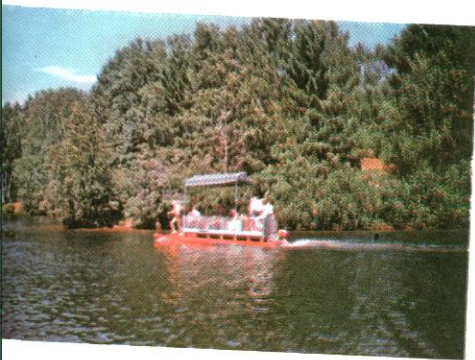
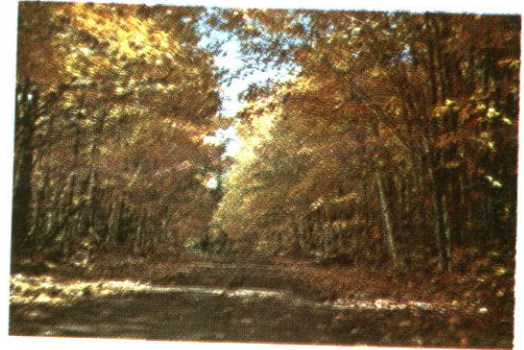
**PHOTOGRAPHERS**

**HUNTERS**

**SKIERS**

**VACATION  
DAYS  
ARE  
HAPPY DAYS**

**MANITOWISH  
WATERS  
CHAMBER  
OF  
COMMERCE**







First White Settler in Manitowish Waters



## HISTORY . . .

By — Michael J. Dunn, III

Where Indians paddled blueberry-laden canoes or camped to barter with fur traders only three generations ago, sun tanned teenagers now skim gracefully over the water on skis or their elders relax in comfort to forget the press of business. That in a nutshell is the story of Manitowish Waters.

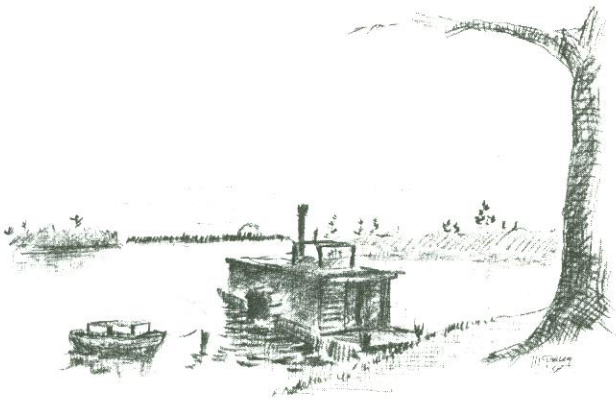
The red man appeared back beyond the reach of recorded history, and when he faded from the local scene his doing so was so gradual that he left no exact date to mark his passing. The first white folk to settle here watched him paddle across Island Lake in summer, his canoe low in the water with the weight of the wild berries it bore. Families still gave him wide leeway; some Indians were still a threat, especially to children of the intruding palefaces. The Indians had an age-old gathering place on the eastern shore of Manitowish Lake. Here they met to trade, to distribute funds from Federal paymasters, to bury their dead. From here too, to propitiate their gods, they floated sacrificial offerings which always drifted to the tiny island that they came to regard as sacred.

Came then the white man, perhaps to trade for furs, to cruise the woods for timber, to settle on a homestead. The story of early Manitowish Waters rings with the names of colorful settlers and personalities. Abe LaFave, who settled in 1888 and became the predecessor of the resort trade that is now the lifeblood of our community; long gone is the island lodge he built on Island Lake as the first tourist accommodation in the area, but on the shores of that same lake his family today continues the tradition of resort keeping he originated. Dan Devine, who raised a family on Clear Lake, whence he paddled each summer on a month-long canoe journey to Madeline Island in Lake Superior to sell his furs. Peter Vance, a timber cruiser who came here in the 1880's and lies now

in our cemetery, his grave marked by a stone recording his hundred years and his pioneer status. Stephan Stewart, once a Yankee soldier in the Civil War, who was sure he was the only white man for miles around as he surveyed for a timber company dam, only to run into Abe LeFave in these deepest northwoods.

The railroad penetrated the county in 1888. In its wake came the great logging days, a swash-buckling era during which you might have seen stuck into the ground in front of a tavern the pike-poles or canthooks of a hundred or more lumberjacks drinking inside. The Chippewa Lumber and Boom Co. opened the logging age here. In 1892 CL&B forces built the Rest Lake dam with heavy timbers, three spillways and huge iron bullwheels to control the gates; the same year its men also built a steamboat with a backbone of tamarack and cedar ship knees hewn on the Island Lake shore. For the life of the CL&B activities here, the most exciting event of the year was the log drive. For several weeks early each summer pine logs were sent through the spillways in great bunches and washed downstream with huge gulps of penned up lake water. The river then might be a solid mass of logs for many miles. Skilled drivers prodded them along. Leading and trailing the drives were wanigans or cook boats, built below the dam for each year's drive. It took almost all summer and the efforts of up to two hundred men to push the drive all the way to its Chippewa Falls area destination. The rest of the year lumberjacks who lived in long, low, log camp buildings below the dam labored to replenish the log supply held behind the dam in preparation for the next season's drive. They took only the finest of pine, so light that it could float indefinitely and was called cork pine; in the winters teams and sleds pulled the newly felled timber to the icebound shores; in summer giant wheels were used. On the waters of the lakes, raised up to sixteen feet above their original level by the new dam, and thus spreading over a much wider area, the steamboat worked almost round the clock to shepherd huge rafts of logs to the dam. The boom, however, could not go





CL&amp;B Steamboat

on forever, and by the early 1900's and certainly by 1906, the crude little paddle wheel steamer, its whistle stilled, lay pulled up on the shore where modern day water skiers stage their shows. A few families clustered around the dam, which deteriorated and even was left open for a while; the landing where boats met travelers was located on the present Ilg property. The horses, ponies and wagons were kept there and a man named James McKinney kept a tavern there before 1910.

The logging era revived when railroads drew closer to the lakes and could haul out hardwood logs too heavy to float downriver in drives. The Milwaukee Road built in to Boulder Junction in 1903 and on to its Papoose Junction Point by 1906. One leg of the wye at the junction point ran up to Buswell, a Papoose Lake mill village; another leg ran roughly along the present bed of county highway K to reach Riley's Hoist on the shore of Rest Lake just north of the present YMCA Camp. The daily local train of the Milwaukee was not only an important carrier of outbound logs consigned to sawmills further south. The mixed freight and passenger train was the carrier too of inbound supplies for the owners of summer homes on the lakes. At Big Lake Creek near Island Lake these supplies were transferred to barges for lake delivery. From Chicago & Northwestern near Powell a spur cut across Powell Marsh to reach a loading hoist between Star and the Grass lakes (now Stepping Stones). Yawkey-Bissell, Stange Lumber Co. and Brooks & Ross are just a few of the names of lumber or logging firms that cut in what is now Manitowish Waters. Hardwood logs were partially dried to ensure their staying afloat until another little lake boat, like the gasoline powered *Skiddoo*, could raft them to the two landings for loading on railroad cars. From the Star Lake spur track there also radiated little railroad spurs over which lightweight but standard gauge "Peggy" locomotives (geared locomotives, most likely of the shay or screwdriver variety) pulled in loads of logs from the woods;

some of these temporary lines ran as far as Alder and Benson lakes. Big logging activity ceased between 1911 (when the last Yawkey-Bissell activity ceased; that firm's last local camp was near Mud Lake, now Fawn) and 1914, (when the last logs had been shipped from the hoist at Star Lake). In 1919 the Milwaukee Road removed its track along the north side of the chain; the spur to the C&NW was quietly taken up around the same time. The lone sawmills to operate after that era in the area were operated by Bob Loveless, who cut timber in the few pockets of virgin forest during the 1920's, and Marvin Loveless, who ran a small mill into the 1940's or 1950's.

The resort business developed alongside the homesteading that brought the early settlers to this area. First to offer hospitality to sportsmen and other visitors in a lodge was Abe LaFave. In 1892 George Buck settled some land at the narrows between Spider and Manitowish lakes, probably by homesteading it. He too developed a resort business, which stayed in the Buck family until it was sold in 1916 to the Koerners, who began operations under their name the next year. What is now Deer Park Lodge was begun in the 1890's by one J. A. LaMotte of Wausau; its succeeding owners included Jay A. "Dad" Paine, Max Engemann and Charlie Doriot. After spending several summers camping here, Henry Voss built his first cottage here in 1909 and opened an American plan resort in 1911 that is still operated by his family. Supplies were hard to get in those days and Henry Voss' establishment kept farm animals, including cows. For years he arose at four or five in the morning to deliver his milk to local residents and summer home occupants. His pantry had to stock not only supplies sufficient for the resort kitchen but also for sale to housekeeping cottage tenants and neighboring summerfolk.

Until motor travel was common, resort launches met guests borne by stage to the dam from trains at Manitowish or to Star Lake landing by Sherman's buckboard from the station at Powell. Road travel was eased considerable when a bridge was built across the narrows at Buck's, in 1912 and 1913; it replaced a makeshift ferry. Early vacationists were hardy souls, mainly sportsmen. They usually spent several weeks on their vacations in the early resorts, for most of them were people of means.

On the whole, farming has been neither very successful nor very popular in the Manitowish Waters area, with the possible exception of a little dairying. A few would-be farmers were lured up here by big city exploiters and land promoters, were soon disenchanted by the meagre results that attended their exertions, and abandoned their efforts.

In 1923 a new dam at Rest Lake was built; it now maintains a water level eight and a half feet above the original waters before 1892. In winter water levels are dropped by three and a half feet.



In 1927 local residents, chafing at what they felt was neglect by the town of Flambeau to which they then belonged, had a bill passed by the states legislature creating the new Town of Spider Lake. (The name changed to the more specific Town of Manitowish Waters in late 1938.) The new town built a town hall during 1929-30 and the present



Original Town Hall

school the next year or two; the school has been doubled in size by a 1946 addition. The town board authorized a community cemetery in 1935; the earliest burial dates from 1936.

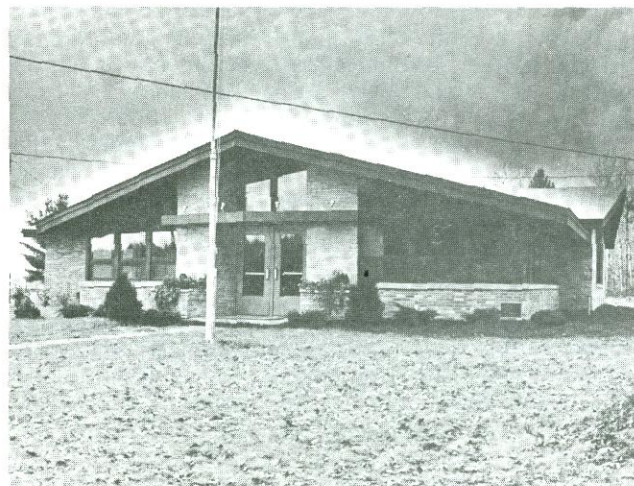
For a brief moment in 1934 the national spotlight focused on this locality, after the notorious desperado John Dillinger was detected hiding out at Little Bohemia. He escaped a dragnet in gunplay that cost two lives.

One of the most unusual activities in Manitowish Waters was the fish hatchery, claimed to be the only town-sponsored one in the state. It was built in 1932 and enlarged in 1936 to provide tiny walleye pike and muskie fry and fingerlings for planting in the chain of lakes. Peak walleye production was apparently 1942's 14,000,000 tiny fish, while the muskies of 1939 numbered 2,700,000. Records are incomplete but that must have been a peak year. The last records cover operation in 1942; the fate of the hatchery is given in a terse mention in minutes of a 1944 town board meeting, which states that the board authorized removal of the electric meter from the hatchery. A victim of wartime problems, the hatchery is still closed.

The postwar era has been one of tremendous growth and refinements in Manitowish Waters. Between 1949 and 1964 the tax list rose from 300 bill-receiving taxpayers to 565 owners. In 1943 the first chamber of commerce groundwork toward eventual construction of an airport came to light. The airport itself came to realization in

1945; it was enlarged soon after and in 1964 a lighting system was installed along one runway. A post office opened here March 1, 1949. Fire protection, a service authorized on a very small scale by a town meeting as far back as 1931, received a great boost with development of the present fully equipped volunteer department two decades later.

The Community Church and Catholic congregations were organized after the war. In an interesting display of religious cooperation both groups worshipped in the same facilities in the old town hall, the Catholics very early in the morning, the Protestants in the later forenoon. Ground was broken for the new Community Church edifice in 1954. The Catholic Church was built in 1958 and named Our Lady, Queen of Peace to honor dead soldiers of the 32nd Division, as a memorial to whom part of the construction funds were given.



Information Booth, Community Center Building

A new community center was built on the airport grounds in 1961. It provides permanent town offices and a gathering place for local functions ranging from elections and town meetings to wedding receptions.

Retail trade prospered; merchants in "downtown" Manitowish Waters enlarged their establishments and new stores appeared at the south entry into the township.

Industry and larger-scale commerce appeared in 1945 with the arrival of cranberry developers and the 1949 move to town by Trueflight Mfg. Co., an archery equipment firm. Both activities found Manitowish Waters a happy environment and have flourished here. Their stories are told elsewhere in the booklet. A smaller fabricating enterprise is Lyon Industries, which makes fiberglass boats and custom molded products. No longer operating are two industries of the early 1950's; an arrowhead factory and a producer of television antenna towers.



## Places to go . . . Things to do

### MANITOWISH WATERS . . .

**CRANBERRY MARSHES** — Southeast corner of Town of Manitowish Waters. Among the highest producing bogs in the nation. Seven growers operate marshes along or near Little Trout Lake. Most welcome visitors.

**POWELL MARSH WILDLIFE REFUGE** — Large plantings of native grains and grasses encourage migratory waterfowl to use area as a resting place. Overlook along Powell Road; access roads into marsh.



**MANITOU ISLAND** in Manitowish Lake—Every spring the Indians floated a raft of flowers to appease the Great Spirit that no drownings take place on that lake. There has been a record of no drowning on the lake.

**OLD INDIAN FUR TRADERS' CAMP** — Deer Park Lodge is now located on this site.

**PUBLIC BEACHES AND PICNIC GROUNDS** — Vance Lake, Little Star Lake, Clear Lake, Alder Lake (for canoeists), islands in Island Lake (for canoeists).

**FIRE TOWER** — Near Rest Lake dam. Affords good view as far as the hills of the Iron Range on the north, across the Powell Marsh to the south.

**PLAYGROUND AND SPORTS AREA** — At Community Building. Features a golf driving range, baseball diamond, children's swings, climbing bars, merry-go-round. Young people and adults alike will enjoy playing on the brand new **TENNIS COURT**. Firing range for target practice, especially welcomed by hunters. Basketball hoops on the airport hanger.

**WATER SKI SHOWS BY THE SKIING SKEETERS** — Free, Wednesday and Sunday evenings during July and August.

**WATER SKI TOURNAMENTS** — Sponsored on two August weekends by the Skiing Skeeters are the Beier Barefoot Tourney and the Wisconsin State Barefoot Tourney—both interesting meets featuring spectacular barefoot water skiing activity.

**REST LAKE DAM** — Site of old loggers' dam, now replaced by modern structure with walkway beneath. Controls lake levels. Once had a fish lock to boost fish over the drop—ruins of it are still visible.

**BEAR PITS** — Watch Bruin and his family.

**THE CHAIN OF LAKES** — To see the beauty of the woods and the waters, take your own boat or rent a pontoon boat and take a party along—you can drive or an operator can be furnished. Take a picnic lunch along to eat at one of the many waterside picnic spots available on Island Lake or Alder Lake. Ask any of our tackle or boat shops about time and rates.

**YOUTH CONSERVATION CAMP** — On Statehouse Lake. Boys spend part of the summer here to work on woods improvement projects.

**CANOE TRIPS** — If you have access to a canoe, put in near Boulder and come down the lovely Manitowish River, where the rapids offer a bit of a challenge and the undisturbed scenery promises views of wildlife. Another interesting river trip is down the same river from the dam to Manitowish depot, on which course the river passes through small lakes and marshy areas favored by herons, ducks and animal life. Inquire locally about canoe rental and delivery.





**ELSEWHERE . . .**

Tired of FISHING, SWIMMING, LOAFING? Why not take a scenic drive through Vilas County? In Vilas County we have over 1000 lakes and streams, many acres of forest plantations, many acres of timber. Be on the lookout for wildlife—deer, bear, raccoons, fox, coyotes, woodchucks are most abundant. On some streams you may spot beaver dams. On your tour ask the various community information bureaus or business places for directions. The friendly folk will be glad to help you find the spots you are seeking.

***On your drive you might look for —***

**UNUSUAL ROCK FORMATIONS** — Near Presque Isle. Mica Schist deposit resembling a petrified tree, many thousands of years old. Presque Isle, formerly a booming lumber town, still has a tiny dam and the largest **WALLEYE REARING POND** in the state of Wisconsin. Hundreds of thousands of small walleye pike fry are reared to fingerling size to stock the lakes of northern Wisconsin.

**VILAS COUNTY HISTORICAL MUSEUM** at Sayner — Interesting collection of local historical objects and displays explaining local lore. Also in Sayner are walleye rearing ponds, Len Weber's Wild life Farm, golfing at the Plum Lake Golf Course. Near Sayner are **CRYSTAL LAKE BEACH** and campground on a very clear lake, and **MUS-SKI MOUNTAIN SKI HILL**, with slopes for children, grown ups and sophisticated skiers.

**INDIAN HOMES AND CEMETERY** — Near Partridge Lake. This area has been inhabited by Indians since the beginning of time in Vilas County. At Lac du Flambeau see the old Indian village, browse through curio shops, visit the Grahl Mutation Mink Exhibition and see the weekly Indian Pow-wows, a feature attraction of the Indian Reservation.



**MEDICINE ROCK** — Lac du Flambeau. Scene of Chippewa-Sioux battle.

**BOULDER JUNCTION** — So named because the Milwaukee Road once ran two railroad lines that met in the community, now a tourist instead of lumbering center. Features are Shrimp's Wild Life Display and the unusually interesting and worthwhile **AQUALAND** live fish and wild life studios.

**ARBOR VITAE** — Once a lumber milling center, now site of Henkelman's Museum; nearby on highway 51 are Marchino Wild Life Museum and golfing at Trout Lake Golf Course.



LAKE LENORE SKI HILL — MANITOWISH WATERS, WIS.

**WOODRUFF AND MINOCQUA** — Though just out of the county, these communities offer many interesting things to see and do. Free water ski shows thrice weekly. Guided tours through Wisconsin Gardens, nature's workshop. Aqua-Rama, gala three day festivities in early August. Magic Spot. Squirrel Hill ski area. Golf at Minocqua Country Club; movies at three theatres; shops. Near Woodruff is the **STATE FISH HATCHERY**. Worth a visit, this hatchery hatches the eggs and rears them into fry, providing many of the fry and fingerlings planted in northern Wisconsin.

**STAR LAKE FORESTRY PLANTATION** — On the banks of the famed Star Lake near Sayner. The site was once an old lumber camp. The plantation itself was started in 1913 in an effort to show people that forest trees could be planted.

**EAGLE NESTS** — Throughout Vilas County. One on Highway "G" approximately 6 miles out of Eagle River is marked by a highway sign.

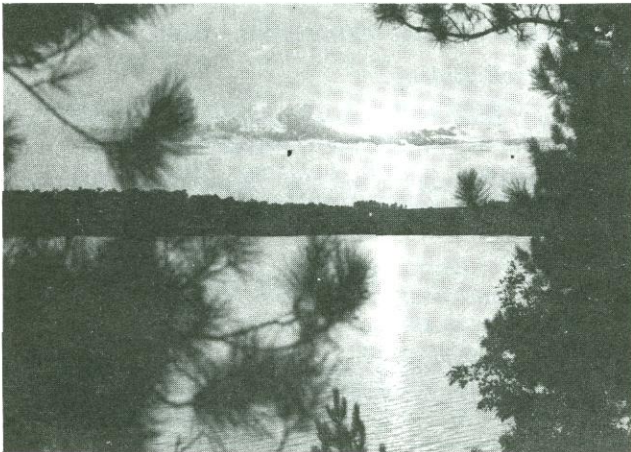
**FIVE LAKE EXPERIMENTAL PROJECT** — An experiment in fish habitat and production, on Nebish Road. Also along this road are forest plantations where it is common to see deer feeding in the evening.



**LAC VIEUX DESERT** — Near Land O' Lakes. On the north shore is an Indian village where Indians still live and carry out many of their customs of long ago; nearby are Indian burial mounds. On the south shore rises the hardest working river in the nation, the mighty Wisconsin River. At this historical spot, which bears a marker, Father Rene Menard (who later vanished without a trace down the river near Merrill) said the first Mass in what is now Vilas County. Picnic benches are now on this spot for the convenience of visitors.

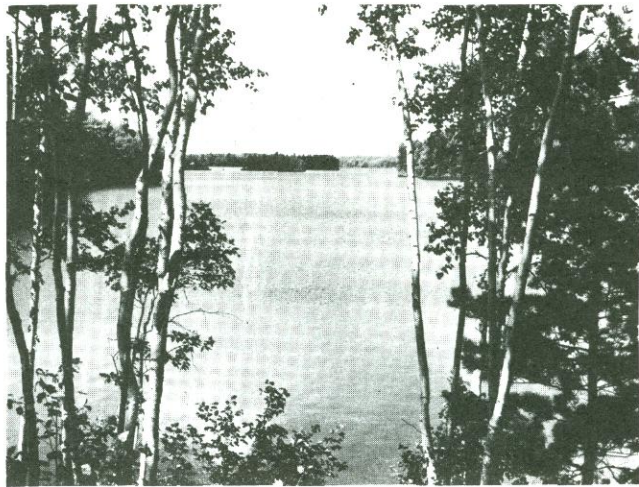
**THE MILITARY ROAD** — Used during the Civil War. Passes through Vilas County, mostly through the Town of Phelps. A fire tower located on the Military Hill, just east of Phelps on highway 17, is one of the highest fire towers in the state. Open to visitors.

**THE CONTINENTAL DIVIDE** — Crosses highway "B" between Land O' Lakes and Presque Isle and crosses highway 51 between Mercer and Hurley. Streams and lakes north of this divide run or drain into the St. Lawrence watershed; those south of it drain into the Mississippi via the Wisconsin River.



**CATHEDRAL POINT** — Beautiful timbered point between Little Trout and Big Trout Lakes, along the east shore. Many of the existing pines are 120 to 130 feet tall. They are being grown on the site of what was once an Indian garden. This is a beautiful picnic area and should be especially appealing to children. Trout Lake Nursery is nearby; here millions of tiny forest seeds are grown into seedlings and transplants to help reforest the state. Also nearby is a historical marker commemorating the first forestry patrol flight, and pleasant picnic area.

**TREES FOR TOMORROW CAMP** — Eagle River. Camp for teaching conservation to young people and adults. Many enjoy the facilities each year. While at the camp don't miss the TALKING TREE.



**NATURE TRAILS** — Hiking trails in the Town of St. Germain. Stop at the information bureau for a guide to these interesting paths for the vacationist.

**LAND O' LAKES** — Airport is the only one in Vilas County which has scheduled airline service, summer only, by North Central Airlines. Boulder Junction airport has seaplane landing and servicing facilities. Other airports with scheduled airline service near Manitowish Waters are Ironwood (Mich.) and Rhinelander. Rhinelander also has an interesting LOGGING MUSEUM.

Vilas County is the site of much publicly owned land. NORTHERN HIGHLAND STATE FOREST, NICOLET NATIONAL FOREST, CHEQUAMEGON NATIONAL FOREST and the COUNTY FOREST make up most of this ownership.

Along the forest roads you will see extensive plantings of forest trees, blueberry patches and deer trails. Just before dusk is a good time to go riding in search of wild life. Driftwood picking is popular along the shorelines of the county's thousand bodies of water. Wisconsin River and the Rainbow Flowage have the most driftwood.

Vilas County is also known for its certified seed potatoes. The area north and west of Eagle River is especially adapted for growing potatoes for seed, and seed potatoes from this area have been shipped all over the United States.

**SCENIC TRIPS OUTSIDE THE COUNTY** — include enchanting Madeline Island in Lake Superior and Copper Falls near Mellen among many delightful destinations. In Upper Michigan there are open to visitors underground iron mines. Don't miss the Porcupine Mountains near Lake Superior, the river falls and scenic drives to Black River Harbor and Presque Isle Park. Little Girl's Point on the Lake Superior shore is also appealing.



The State of Wisconsin, owning many thousands of acres of land in the County, and thousands in our town, in 1962, established a Youth Conservation Camp on Statehouse Lake. This is one of two built in 1962. More are to follow. There are two sessions at the camp, for about 100 boys in each session. They work several hours each week on conservation projects, such as building dams, constructing fire lanes, felling timber, all with the idea in mind of teaching conservation. Attendance is offered on a competitive basis, with a limited capacity and those boys attending all indicate a liking for that type of career, and are potential Conservation leaders. Your visit will be most welcome, and the camp is so organized that a trip through its facilities is always available.

There are many other camps, both organizational and private in the neighborhood. All offer summer fun and discipline in many fields.

Camp Jorn operated by the Waukegan Y.M.C.A., is located on the east shore of Rest Lake, and was once the summer home of Charles Nash, founder of what today is American Motors. It is host to many children each summer, and their activities are well supervised. One of the features, later in the summer, is "family week", when families connected with the organization come for a vacation stay, enjoying all of the facilities of a modern camp. Visitors are always welcome.



Camp Manitowish at Boulder Junction is one of the largest, operated by Mid Central States Y.M.C.A. organization, but owned by the State Y. Weekends are excellent times for visiting, as there are apt to be more guides available to show you the fine facilities on Big Boulder Lake.

If you have sons or daughters of Camper Age, (almost any age to 18 or 19) why not plan on a real vacation—let the camps take over the children while you have a restful vacation, near by, in Manitowish Waters.



## MANITOWISH WATERS OFFERS —

*Accommodations to suit every taste and purse.*

*Excellent fishing.*

*Scenic vistas for the photographer in every season of the year.*

*Marinas for service on your boat.*

*Boat rental facilities from canoes to ski boats.  
Water ski shows every week.*

*Golf range for improving your swing.*

*Horse Back Riding.*

*Plan on a fall trip—see the exotic colors of birch, maple, aspen, oak, willow—all contrasted with the green of the balsams, pines, tamaracks, hemlocks. Many resorts are open and will be happy to direct you to the best in color.*

*Come up for hunting—many thousands of acres of open land nearby for birds, deer and bear. The bow season is earlier and gun season will find many places open for your needs.*

*If you have never seen the North in its pristine winter glory, or ice fished, plan to come up for a long weekend in the winter season. Many resorts are available and can have accommodations ready on your advance reservation.*





# Enjoy JONES' PINE ACRES

FOR THE **REST** OF YOUR LIFE

ON BEAUTIFUL SPIDER LAKE

In the Center of the Manitowish Waters  
Chain of 14 Beautiful Lakes

## Fisherman's Paradise

Fishing in the MANITOWISH WATERS provides the thrill that all fishermen dream about, if you cast, troll or still-fish, this is the place. There is no thrill that can compare with the battle that ensues when a MUSKIE is hooked; nor no fish more palatable and delicious than those taken from these clear, spring-fed lakes. The fishing season opens around May 15th each year. For the best fishing, we recommend the early part of the season or during September and October.

## Finest Bathing Beach

A natural formed sandy beach with a gradual slope, with no holes or drop-offs, provides perfect safety for children.

Bathing here is a real treat, fine sand beach and clear, sparkling water forms a temptation you'll never resist; Large pier for sun bathing.

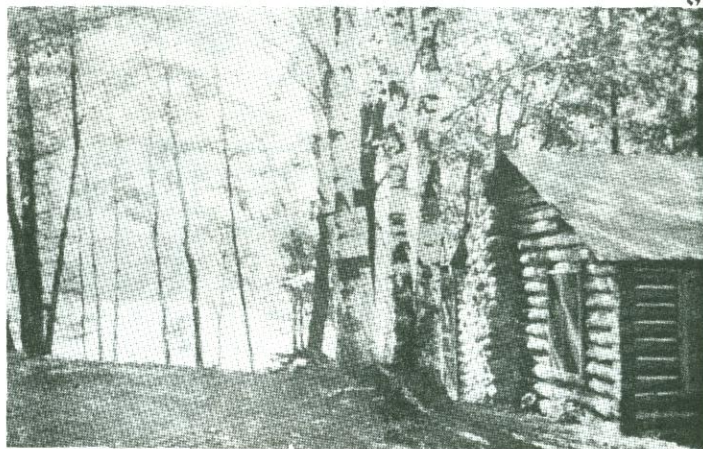
PLAYGROUND

BADMINTON

HORSESHOE COURT

We have a wonderful acreage among the PINES. Nearly the highest elevation in Wisconsin. Over 1650 feet above sea level. INCOMPARABLE climate.

No Pets Please



## Nature's Wonderland

To lovers of nature, we cannot describe the natural beauty of the colorful NORTH WOODS, about the middle of September and the month of October, the woods begin to color. A riot of colors and shades that no artist can paint. A sight that is worth the trip alone. September with its warm days and cool nights. With a wood burning fire in our Natural fireplaces, make your evenings something to remember. Fall fishing is the BEST of the season.

WE WELCOME HUNTERS AND SKIERS

## Rustic Log Cabins

All modern, tiled floors for easy housekeeping, hot and cold water, complete bathroom with shower. Gas stoves with oven and broiler. Electric refrigerator. Natural stone fireplaces and oil heaters for your comfort. Completely furnished. Bed linens and wool blankets. Deep freeze service. One boat with each cabin. Cabins accommodate from two to eight people. One, two and three bedrooms.

Cabins accommodate from 2 to 10 people—1, 2, and 3 bedrooms

Rented by the week, month, or season—\$75.00 to \$105.00

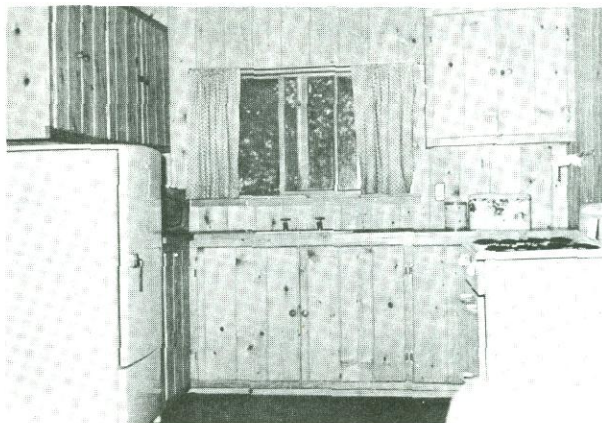
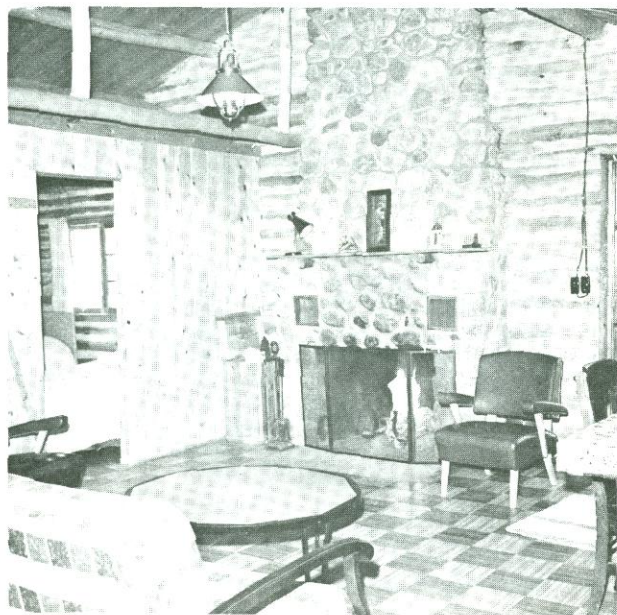
VERY SPECIAL RATES IN SPRING AND FALL

— WRITE —

**VIC JONES**

Phone 715-543-2160

Manitowish Waters, Wisconsin 54545





# Voss' BREEZY POINT

Beautifully Located on  
Spider Lake, Center of Manitowish Waters Chain

THE BEST IN SUMMER HOME TYPE COTTAGES

*All Modern — 2 and 3 bedroom. Tub-shower baths. Well equipped kitchens. Spacious living rooms with picture windows, fireplaces and automatic heat for complete comfort. Ideal for long term rentals. Rates from \$125.00 per week. Rentals by week, month or season.*

*SPECIAL RATES: By day or week during May, June, September and October.*

## EXCELLENT CLIENTELE

Voss' Breezy Point and Voss' Marina are owned and operated by Lloyd Voss, formerly of Voss' Birchwood Lodge, and well known in the resort industry for over 50 years.

For Colored Booklet Write:

Lloyd Voss  
Box 100  
Manitowish Waters Wis.

Phone 543-8457



ATTRACTIVELY FURNISHED



PICTURE WINDOWS OVERLOOK LAKE



COTTAGES and GROUNDS — WELL KEPT



"COACH HOUSE" — ONE OF OUR EXECUTIVE HOMES  
ON PRIVATE GROUNDS

## Voss' CHAIN O' LAKES MARINA

Ideally located on Hwy. 51 at Spider Lake Bridge

CONVENIENT TO ALL LAKES  
ON THE CHAIN

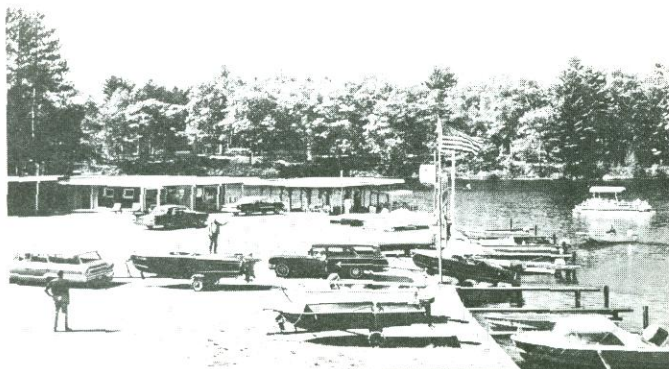
Phone 543-8456

Excellent concrete boat ramp  
Cities Service Products  
Boat and Motor Rentals  
Ski Boats and Equipment

Complete Dock Service  
Johnson Motor Sales  
Live Bait and Tackle

Pontoon Boats  
Scenic Rides  
Canoe Rentals  
Rest Rooms

**WATER FRONT GRILL**  
TASTY SANDWICHES — FOUNTAIN SERVICE







IF YOU ARE LOOKING FOR A COTTAGE THAT'S EXCEPTIONALLY CLEAN, COMPLETELY MODERN AND WELL EQUIPPED, IT'S

## SPONER'S REST LAKE RESORT

At the Top of the Manitowish Chain

For Free Brochure—Write

**Bob and Chris Sponer**

Manitowish Waters  
Wisconsin 54545  
Phone 715-543-8818



- \* 750 ft. Improved Shoreline
- \* 5—2 Bedroom Cottages
- \* Hot and Cold Showers
- \* 14 ft. Aluminum Boats
- \* Automatic Gas Heat
- \* Sandy Beach
- \* Innerspring Mattresses
- \* Tile Floors
- \* Children's Play Area
- \* Shuffleboard, Tetherball
- Badminton, Horseshoe Pits

- \* Well Lighted Grounds
- \* Free Freezer Service
- \* Rates \$75.00 Plus Tax

**No Pets Please**

# Little Bohemia Lodge

Like a bit of Old Europe transplanted to Wisconsin Northwoods. Little Bohemia has all the charm and advantage of the old world and the new. Stay in one of our Modern Cottages and eat in one of our dining rooms overlooking beautiful Little Star Lake.



- Picturesque Architecture

- Rustic Informal Atmosphere

- Authentic Bohemian Cuisine

- Our Cocktail Bar features Liquors from 32 Countries

- Six Modern Cottages

- American Plan or European Plan



Serving Daily from 8:00 A. M. to 10:00 P. M.

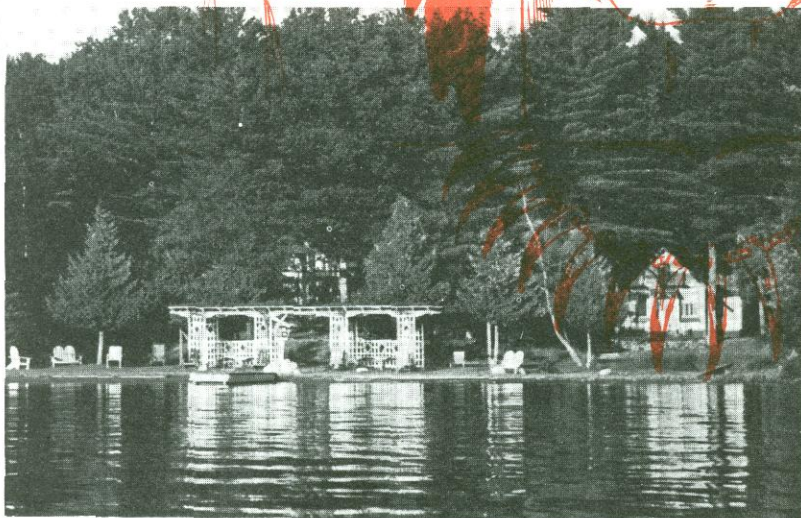
Phone 543-8433

20 MILES NORTH OF WOODRUFF ON U. S. HIGHWAY 51



*Come to*  
**SCHULTZ'**

# RED FEATHER LODGE



**American Plan and Modern Housekeeping Cottages  
Conventions Welcomed**

To really appreciate the wonderful work of mother nature one has to see the great job that she has finished at the Red Feather Lodge. Our beautiful beach was not just a hurry-up-job, it required many years of hard labor to complete, all sand bottom with-out any sudden drop-offs.

It took many moons to form a large body of water that formed the Manitowish Waters Chain. Rest Lake is just one of the fourteen lakes that formed the chain. She also stock-ed these lakes with the tiger musky, walleye and many pan fish.

To help mother nature complete these sur-roundings, we have added very modern cot-tages so that everyone can relax and enjoy her many years of toil.

To really enjoy and appreciate her work, one has to see it. We hope you will join the happy tribe at the Red Feather Lodge. We also have to add our delicious food which is tastefully prepared in our dining room.

For complete information, write

ED and NORM SCHULTZ

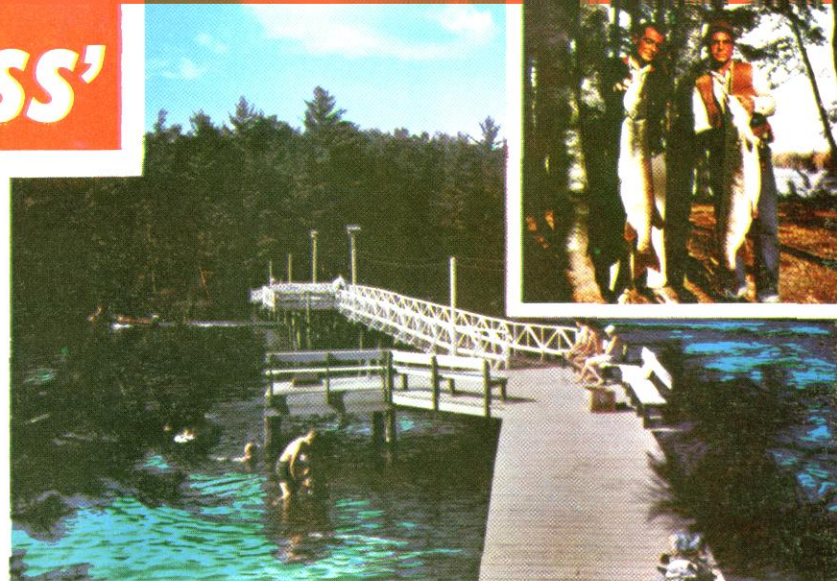
**Schultz' Red Feather Lodge**

Phone 715-543-2101

Manitowish Waters, Wis. 54545



# VOSS'



## OVER 55 YEARS OF SUCCESSFUL RESORT OPERATION

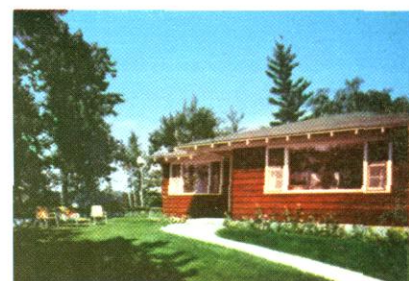
- ★ **RUSTIC MAIN LODGE**—Spacious fireside lounge - Dining room with panoramic lake view. Guests rooms and suites with private bath. RATES: \$ 11.00 to \$14.00 and up, daily, each, including breakfast and evening dinner, daily maid service
- ★ **ATTRACTIVE** individual MODIFIED AMERICAN PLAN guest cottages with 1-2-3 or 4 bedrooms, private baths, living room, fireplaces, automatic heat, screened or glassed-in porches—picture windows overlooking lake. RATES: \$12 to \$18.00 daily, each, maid service, breakfast and evening dinner . . . A REAL VACATION.
- ★ **COFFEE-SHOP**, Soda Fountain for snacks. Cocktail room Bar. Import Yard & Knit Shop and Antique Shop. Recreation Building separate from the Main Lodge.
- ★ **RECREATION**—Swimming at sandy beach, Tennis, Ping Pong, Shuffleboard, Saddle Horses nearby, Hiking through wooded trails, Canoeing, Pontoon Boat, Fishing, Scenic trips to places of interest, Picnic and Cook-Out Lunches prepared upon request, Golf nearby. Competent guides available. Boats and motors.
- ★ **MODERN** and completely furnished housekeeping cottages \$85. to \$150. weekly. Minimum 2 week rental period during July and August on housekeeping cottages. SUMMER HOME type cottage available by month or season.
- ★ **CENTRALLY LOCATED** on the MANITOWISH WATERS chain of 14 lakes just 20 miles north of Minocqua on U.S. 51 . . . Class 2 Municipal Airport 1 1/2 miles away. Catholic and Protestant Churches within one and two miles.
- ★ **OUTSTANDING ACCOMMODATIONS**, wonderful food and pleasant surroundings. Early reservations are very important.

WRITE FOR DETAILED INFORMATION AND BROCHURE

## Voss' Birchwood Lodge,

MANITOWISH WATERS  
WISCONSIN 54545

Phone 543-8441 or 543-9442  
Audrey Voss Dickerson, Owner



Miles of Beautiful Resort Grounds  
Surrounded by the Manitowish  
Waters Chain of Lakes



VOSS' BIRCHWOOD LODGE — NORTHERN WISCONSIN'S FINEST RESORT





Deer park Lodge's new Swimming Pool and Reception/Lounge

*Vacation*

AT THE SUMMER RESORT WITH EVERYTHING



Deer  
park  
Lodge

MANITOWISH WATERS, WISCONSIN

Deer park's modern reception/lounge



Beach Villa French Provincial Elegance



## DEER PARK LODGE DINING ROOM OPEN TO THE PUBLIC

Yes, you're welcome for cocktails or dinner, overnight or the season at Deer park. Our "Little Fawn Lounge" is Vilas Vacationer's favorite spot for cocktails and entertainment. And, you'll find there's no better food in all Wisconsin than at "DpL."

at night . . .

Deer park Lodge is gay and carefree, you can "live it up." Enjoy Cocktails, dancing, planned entertainment that's varied each evening. At 10:30, enjoy a fabulous Buffet/Snack. Then sleep as you've never slept before in Wisconsin's newest, smartest resort accommodations . . . Deer park's beautiful Beach Villa.

by day . . .

Deer park Lodge is informal; go Golfing (FREE July and August), ride Horseback, Waterski, swim in a large, Heated/Glassed-in pool, or fish 'n cruise Manitowish Water's famous "Chain Of Lakes." The accommodations are the finest. The food, it's "out of this world."

### AMERICAN PLAN ONLY

For information or reservations  
call AREA 715 - 543-9412

MAIL THIS COUPON TODAY FOR FREE COLORFUL BROCHURE



bring your  
FAMILY!  
Our famous  
"kid sitters"  
supervise play  
8 hours each day,  
at no extra charge.  
Special rates, too!

DEER PARK LODGE  
BOX 9L9  
MANITOWISH WATERS, WISCONSIN 54545  
In CHICAGO call 236-5241 "TOLL"

Name

Address

City  State

Member: Diners Club, AAA, American Express

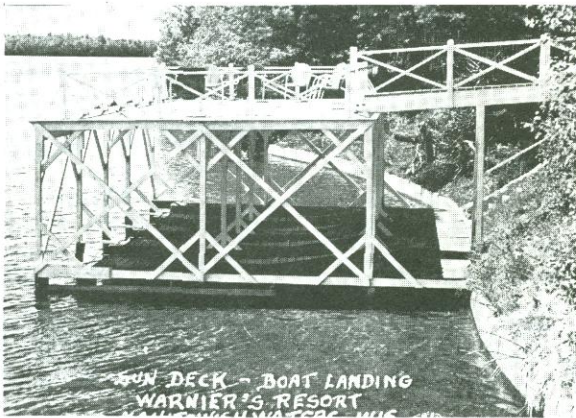
Come to DpL for your next SALES MEETING or CONVENTION



## Warniers Resort

Phone 715-543-8944

MANITOWISH WATERS, WISCONSIN 54545

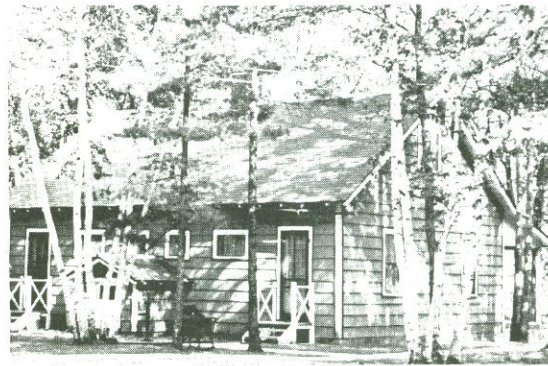


Since We Feed Deer in Our Yard  
No Pets Allowed

Mosquito Control

Shuffleboard — Horseshoe Courts

Reduced Spring and Fall Rates



Able to accommodate up to 12 guests in this building



Strictly Modern Accommodations



## RUSTIC MANOR

16 Miles N. of Woodruff on Hwy. 51

MOTEL — OVERNIGHT CABINS

DINING ROOM — BAR

Phone 715-543-8980

Everett Stiemke, Owner

Manitowish Waters, Wisconsin 54545



## HENNING'S HOUSEKEEPING COTTAGES

ON MANITOWISH LAKE

MODERN COTTAGES  
TO ACCOMMODATE TWO TO SIX PERSONS  
SANDY BEACH

For information, write:

**FRITZ HENNING**

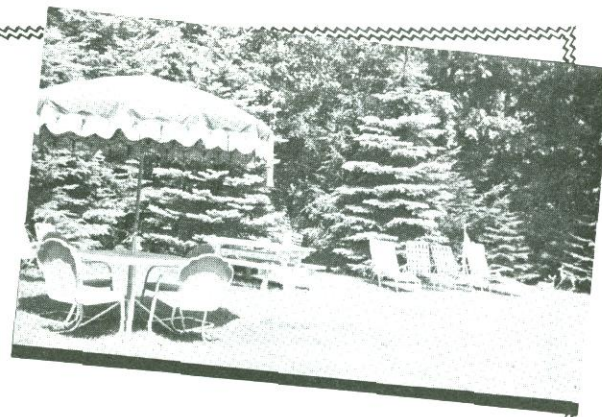
Manitowish Waters, Wisconsin

PHONE 715-543-8849





**YOU'LL FEEL  
RIGHT  
AT HOME**



... That's the best way to describe Aschenbrenner's. Just visualize the eye-appealing, completely landscaped grounds, the open-pit fireplace for barbecues, the all-modern, furnished, two and three bedroom cottages with every convenience. All cottages face enchanting Spider Lake, the center of the famous Manitowish Waters Chain of Fourteen Lakes. It's so neat, so clean and so perfect.

**EXCELLENT FISHING  
MUSKY — WALLEYE  
NORTHERN PIKE  
BASS — PANFISH**



**SWIMMING  
SANDY BEACH  
BOAT LANDING  
RECREATION ROOM**

SEASON—MAY 15 to NOVEMBER 1

RATES BY WEEK, MONTH OR SEASON

LOUIE

# Aschenbrenner's

## MANITOWISH WATERS RESORT

HILDY

MANITOWISH WATERS, WISCONSIN

Phone 715-543-8991

**ARNIE & TONI'S**

## WAUKEGAN LODGE

PHONE 715-543-8977

MANITOWISH WATERS, WISCONSIN 54545

**SAFE BEACH  
PLAYGROUND**

**ROOFED DOCKS  
RECREATION AREA**

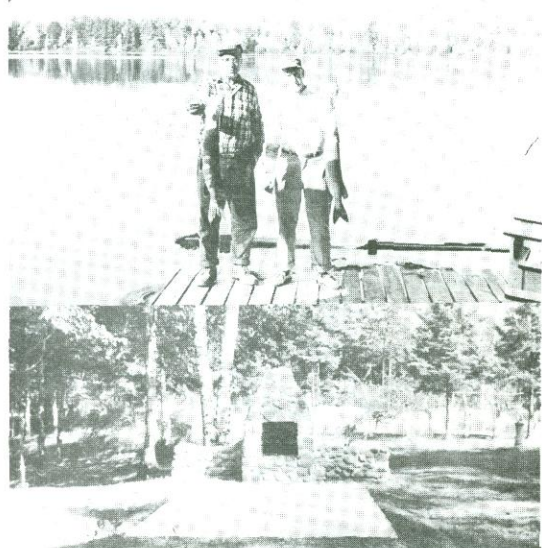


Waukegan Lodge is situated in Northern Wisconsin's famous Vilas County — Amid spacious grounds, stately pines and a congenial atmosphere.

Completely Modern Housekeeping cottages with toilets, showers, oil heaters, refrigerators, gas ranges, and comfortable beds.

Excellent boats, dry and clean, kept under roofs, allow you to leave your equipment in your boat. Picnics are held every week at the resort Bar-B-Q-Pit to introduce new guests and reacquaint old ones — So for a vacation you'll want to repeat — Contact:

**ARNIE & TONI CLARE  
AT  
WAUKEGAN LODGE**





## HAVE FUN WITH THE BUNNS

### AT *Northwoods Lodge*

on Little Star Lake

Completely Modern 2, 3, and 4 Bedroom  
Housekeeping Cottages

We have one of the finest Sandy Beaches found anywhere, gradual slope, no holes or drop offs, and the water is crystal clear. Floating raft, good boats. Deep freeze service.

Reduced rates before June 1st and after Labor Day

For information and literature write

**Walter and Bea Bunn**

Manitowish Waters, Wis. 54545

Phone 543-8344



### CAIN'S MODERN COTTAGE

"A HOME AWAY FROM HOME"

Overlooking the west shore of beautiful Island Lake on the Manitowish Waters Chain of 14 lakes.

1 mile off U.S. Hy. 51, black top road to cottage. Strictly modern, fully equipped, spacious 2 or 3 bedroom housekeeping cottage, large living room, modern kitchen, shower bath, roomy screened porch, natural stone fireplace, automatic heat, private boat landing.

150 ft. private, beautiful, safe sand beach. No drop-offs.

Muskie, pike, bass, pan fishing. Private pier, good boat.

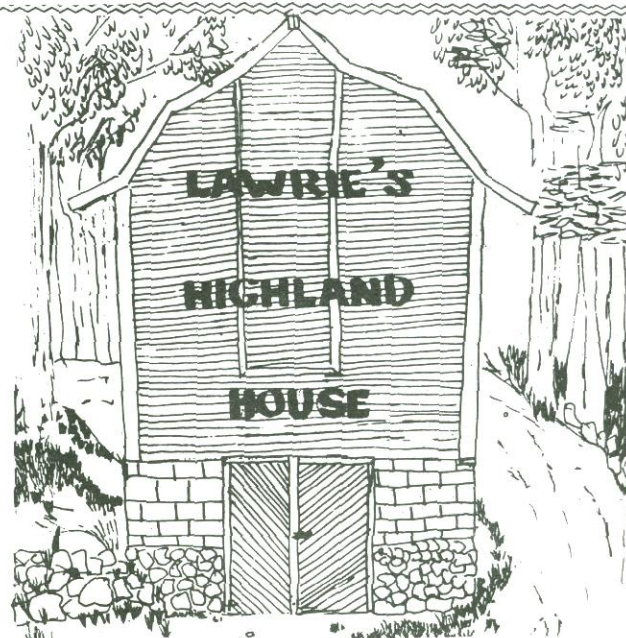
2 bedroom cottage \$85. per week, 3 bedroom cottage \$100. per week. Special rates to middle of June, after Labor Day.

For Further Information Write:

**Marty Cain's Resort**

MANITOWISH WATERS, WIS. 54545

PHONE 543-2159



Offering A Wide Selection of  
**HANDICRAFTS and ARTS**

OPEN MEMORIAL DAY THRU OCTOBER—10 a.m. to 6 p.m.  
AND BY APPOINTMENT—PLEASE CALL 543-2126

*Rene Lawrie*

Watch Lakeland Times for Specialties.

LOCATED 1 Mile Off U.S. 51 On Spider Lake Road—4 miles south of Manitowish Waters Shopping Center and 22 miles north of Minocqua (watch for sign) going north 1 mile from Spider Lake Road.

Manitowish Waters, Wisconsin 54545



# Birch Bay Cabins

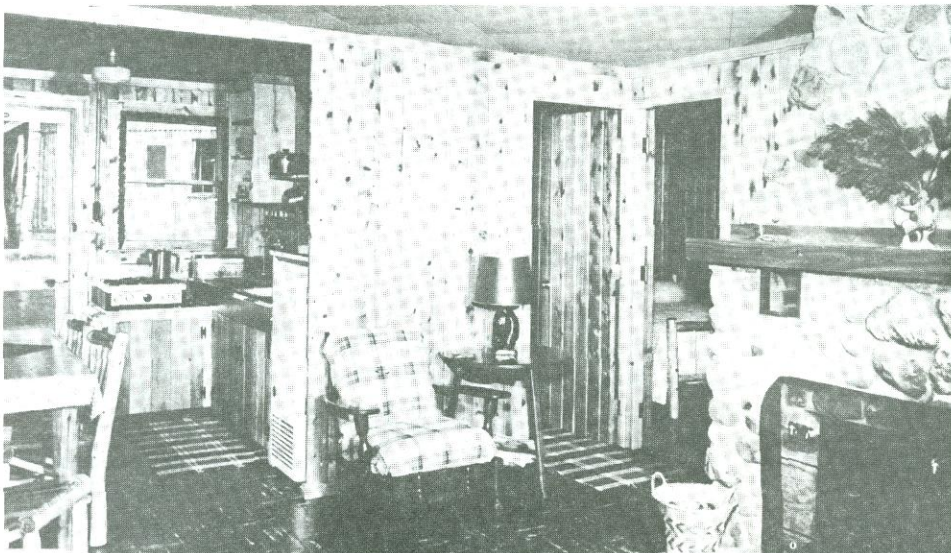
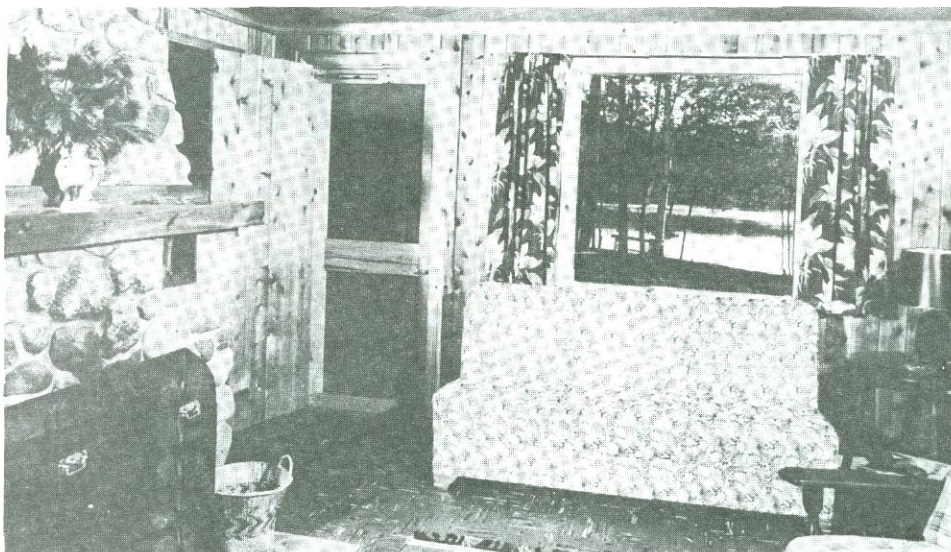
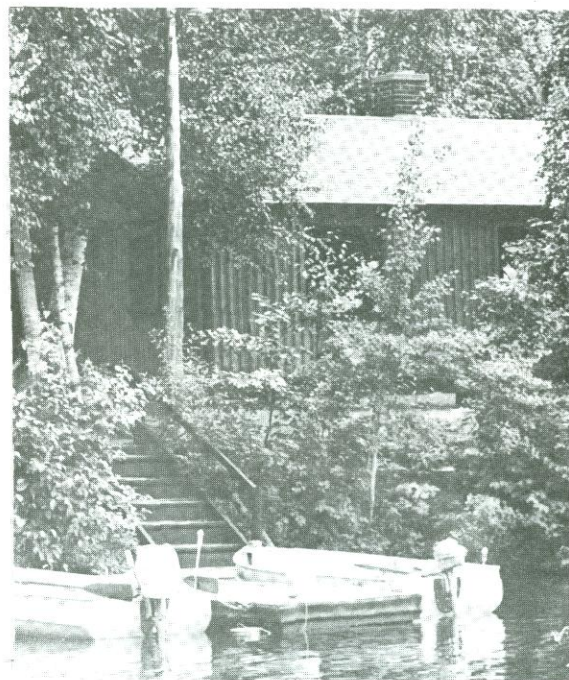
One Mile off U.S. Hwy. 51  
On Manitowish Waters Chain of Lakes

6 All Modern Housekeeping Cabins in the  
Heart of the Northwoods

11 Lakes easily reached by boat  
from your dock.

For further information write:

Ernie and Judy Michaelis  
Manitowish Waters, Wisconsin



ALL CABINS WILL  
ACCOMMODATE 2 - 6  
PERSONS



ALL CABINS  
FURNISHED  
AS PICTURED



COMPLETELY MODERN  
BATHROOMS



ALL CABINS  
HAVE FIREPLACES



7 PICTURE WINDOWS  
IN EACH CABIN



40 ACRES OF WOODLAND



1500 FT. OF SHORELINE



SAFE BEACH  
FOR CHILDREN



ALL BOATS ARE  
ALUMA-CRAFT



PLEASE - NO PETS  
THANK YOU



PHONE 715-543-8922





## Housekeeping Cottages

fully equipped . . . modern

Screened porches . . . innerspring mattresses . . . bottled gas . . . oil heat

SHOWERS — FIBERGLASS BOATS — MOSQUITO CONTROL

.. for

A restful and invigorating vacation,  
come to

### "QUO VADIS"

Nestled among the pines on the shores of beautiful Clear Lake .  
headwaters of the famous Manitowish chain of fourteen lakes



.. for Thrills . . . fish in the famous "Quo Vadis Bay", favorite fishing grounds of the chain, where muskie and walleyes abound.

Reasonable rates by the week, month or season.

Third week of June thru first week of Sept.

Special rate out of sesason.

Telephone 715-543-8318

**No Pets Please**

OPEN—MAY 15 to OCTOBER 15

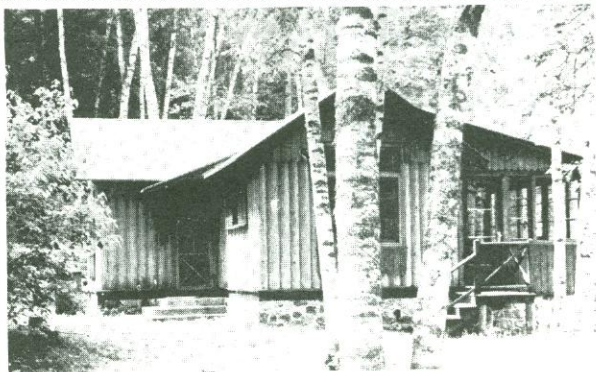


Cabins in the pines  
Clear Lake



"Just The Place  
You're  
Looking For"  
KNOPP'S

## Birch Cove



Modern HouseKeeping Cottages  
on Beautiful Spider Lake

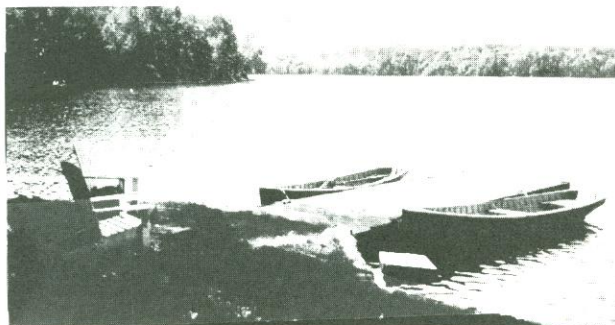
A moderate size resort under congenial management, on the chain of 14 lakes, offering two fine modern cottages equipped with showers, completely and comfortably furnished in every respect. Cottages overlook the lake with sufficient spacing to afford privacy.

Good boat included in the rates

Shuffleboard - Horseshoe court

Golf and Riding horses nearby

Open May 15th to Oct. 15th



Musky, Walleye & Bass fishing

For further information write  
Mr. and Mrs. Frank F. Knopp  
Manitowish Waters, Wis.

PHONE 715-543-8887



# CAR-LEE CAMPSITES

TRAILER & TENT SPACE

Boat Rentals

ON SOUTH TURTLE LAKE

Vilas County



ALL SITES ON THE LAKE

Electricity, Sewage & Water Hookups

— For Information —

After opening —

**CAR-LEE CAMPSITE**

**P.O. Box 82**

**Manitowish Waters, Wis. 54545**

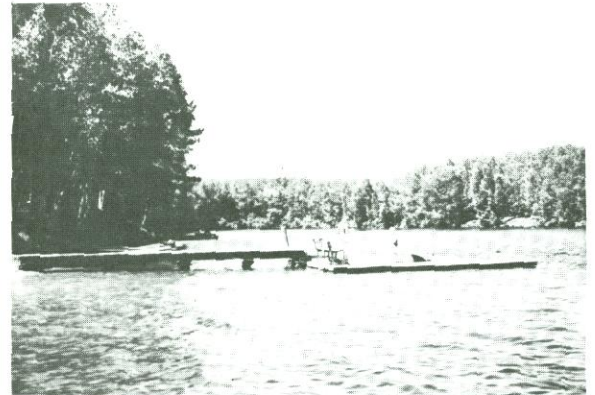
Before opening season —

**Carlton Trettin, Rt. 3, Kaukauna, Wis. 54130**

TELLEFSON'S

# LOR-WOOD RESORT

Located "North of the Tension Zone"  
on Beautiful Stone Lake in the  
Center of the Manitowish Chain of Lakes



Six modern lake front cottages—1, 2 and 3 bedroom, fully equipped kitchens and baths, and automatic gas heat. Moderate rates include all bedding and fiberglass boat.

**Safe Sandy Beach — Floating Raft**

— No Pets Please —

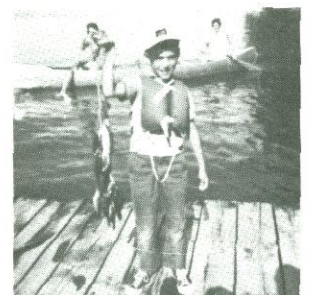
— For Further Information Write —

**Tellefson's Lor-Wood Resort**

ANNETTE TELLEFSON, Owner

PHONE 715-543-2180

MANITOWISH WATERS, WIS. 54545







NEW 2 BEDROOM COTTAGE

- Located on Beautiful Spider Lake.
- Completely Modern Housekeeping Cottages.
- Moderately Priced.
- New Fiber Glass Boat Included.

PLAN ON PLEASURE AT . . .

## PEACEFUL PINES COTTAGES

L. J. Skrobot

MANITOWISH WATERS, WISCONSIN

Phone 543-8810

For you who desire a quiet, restful vacation,  
with all conveniences.



3 BEDROOM FAMILY SIZE COTTAGE



## Among The Pines

MODERN COTTAGES FULLY FURNISHED  
BEAUTIFUL WATER FRONT

Automatic Gas Heat  
Safe Sandy Pool for Children  
Good Fishing

Rates \$55.00 and \$70.00 per week  
Includes Boat and Private Pier  
Rates Reduced Spring and Fall

**NORMAN ASTLE**  
Manitowish Waters, Wis. 54545  
Phone 715-543-8392  
Marshall, Wis. Phone 414-655-2203





## TASTY HOME COOKED FOOD TO TAKE OUT

RIBS — CHICKEN — FRESH SALADS  
RAVIOLI — CHOP SUEY — BARBECUE BEEF  
Selection Of Cheese and Cold Cuts  
Try Our Picnic Service

FROM *Bytof's*

### CARRY OUT

Manitowish Waters on Hwy. 51 1/4 Mi. So.  
Of Community Center  
Open Daily 10 a.m. to 8 p.m. — Phone 543-8890  
We Specialize In Pleasing Customers

## Tamburrino's Lindenwood On Spider Lake



GOLF — SWIMMING — HORSE BACK RIDING — FISHING  
HUNTING — WATER SKIING — RELAXING

Strictly Modern Cottages  
— Open All Year —

WE CATER TO SPRING AND FALL  
FISHING AND HUNTING PARTIES

Box 136, Manitowish Waters, Wis. 54545  
Phone 715-543-2102



## Muskie - Walleye - Bass Panfish

BOW AND ARROW HUNTING  
(On edge of State Forest)

Modern Cottages  
SAFE, SANDY BEACH  
GOOD BOATS  
SATISFIED CUSTOMERS

WRITE:

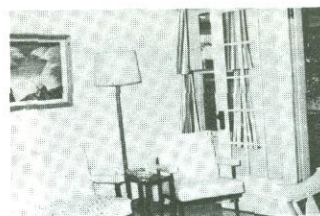
Ellen and Ken Perkins

MANITOWISH WATERS  
WISCONSIN

Phone 715-543-8909



Two Satisfied Customers



## oak grove cottages

manitowish waters, wisconsin

completely modern  
housekeeping cottages

safe sandy beach  
excellent fishing waters



Write:

Irma and Mel Steil  
Manitowish Waters, Wis. 54545  
Phone 715-543-8803







## *Johnson's* MILLPOINT COTTAGES

MODERN, TWO BEDROOM COTTAGES

AMONG VIRGIN PINE ON ALDER LAKE of the Manitowish Chain, within 1 mile of highway 51.

All cottages on lakefront and fully equipped for housekeeping, electricity, hot and cold running water, toilets, gas ranges, electric refrigerators, and automatic gas heat.

SAFE SANDY BEACH — GOOD BOATS

WRITE: Before June 1st, 820 Jordan Pl., Rockford, Ill. Phone 399-4740. After June 1st Write:

HAROLD AND INGA JOHNSON

PHONE 715-543-2120 MANITOWISH WATERS, WIS. 54545



## JOHNSON'S TUCK-AWAY LODGE

One 2 bedroom cottage, ideal for a restful vacation. Very modern, electric appliances, lovely fireplace, automatic heat, knotty cedar paneling throughout. Fenced in swimming for small children. Badminton, horseshoes, large sandy play area.

Write:

*CHARLES and MARIAN JOHNSON*

PHONE 715-543-8384 MANITOWISH WATERS, WIS. 54545



## ON ALDER LAKE OF THE MANITOWISH CHAIN

Modern Two and Three Bedroom  
Furnished Cottages

— Boat Included —

For Information Write

**MR. AND MRS. JOSEPH LAMB**

7949 Tripp Ave.

Chicago, Illinois 60652

Phone 582-5871



FOR A  
QUIET  
RESTFUL  
VACATION

Come  
to . .

## JENSEN'S NORWAY

Located on the sandy shore of Wild Rice Lake  
of the Manitowish Chain

GOOD FISHING — SAFE BEACH

Two completely modern cottages with gas heat,  
screened porches, and complete housekeeping  
facilities.

Write:

S. K. JENSEN, Box 228, MANITOWISH WATERS, WIS. 54545  
Phone (Area Code 715) 385-2378



# Sleight's Wildwood

ON ISLAND LAKE

Famous Manitowish Waters Chain

18 Miles North of Woodruff

THREE-QUARTERS MILE OFF HY. 51

- Boat Launch — Private Piers — All Sand Beach
- Fireplaces — Automatic Oil Heat
- Finest Furnishings
- Outside Charcoal Broilers
- Hot and Cold Running Water — Showers
- Woodlands for Hiking
- Fishing — Walleyes, Musky, Northern and Pan Fish
- Motor Rentals — Guide Service
- Free Freezer Service
- Pets Allowed at Additional Cost

RATES START AT \$85.00  
REDUCED TO \$60.00 SPRING AND FALL

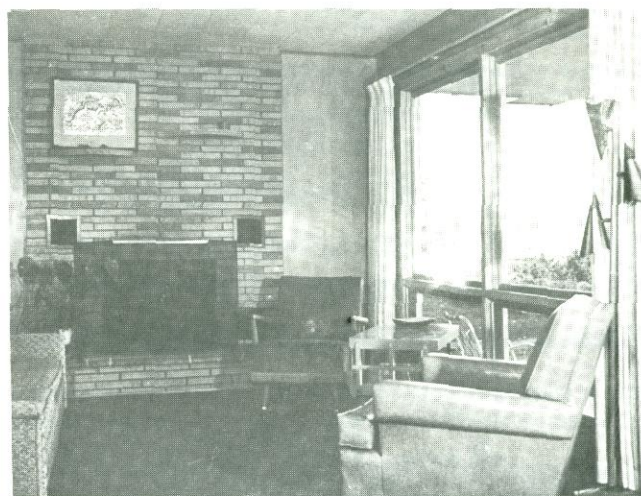
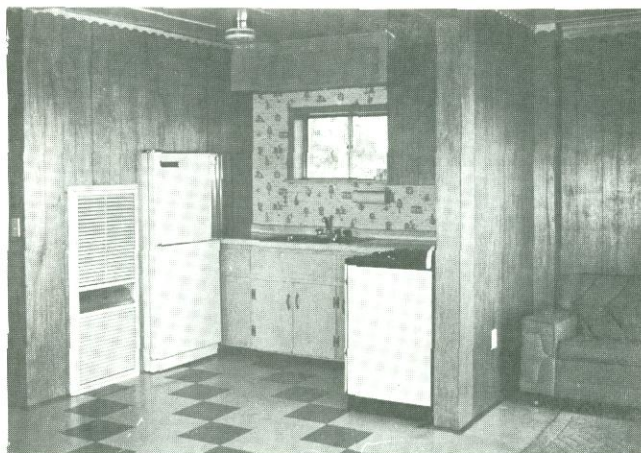
— May to November —  
Week - Month - Season

FOR FURTHER INFORMATION WRITE TO

**Dick and Helene Sleight**

PHONE 715-543-2140

MANITOWISH WATERS, WIS. 54545





# Scholl's

## LENELLE LODGE AND MOTEL

### ON LAKE ADELADE

"Easy to Find" — "Hard to Leave"

A Northland vacation spot of unparalleled pleasure. Country Club comfort along with all the ingredients for your perfect vacation.



Completely Modern Housekeeping Cottages  
Completely Modern Motel American Plan  
Homelike Dining Room - Home Cooked Meals  
Comfortable Recreation Room

Bow and Gun Hunters Welcome  
Complete Playground Facilities  
All Types of Water Sports  
Colorama Accommodations

Fishing - Guides Available  
Woodland Trails for Hiking  
Riding - Golfing Nearby  
Water Ski School

Mosquito Controlled  
Safe Sandy Beach  
Plain Loafing  
Pets Welcome

Ideal for Company Parties—Meetings

ATTENTION: SNOW SKIING CLUBS  
SNOW SKIING ACCOMMODATIONS

For Information and Reservations Write

**LEN AND HARRIET SCHOLL**  
Box 74  
Manitowish Waters, Wis. 54545  
or Phone 715-686-2525



# Island Twins Cottages

ON ISLAND LAKE

ON THE FAMOUS  
MANITOWISH WATERS CHAIN

For Good Fishing and Relaxation  
Try Island Twins  
On Lake Shore

Completely Furnished, Modern  
Two Bedroom Cottages

NO PETS

— For Reservations Write —

C. STACKNER  
Box 187  
Manitowish Waters, Wisconsin 54545



- PRIVATE PIERS
- SCREENED PORCHES
- BOAT INCLUDED
- NEAR SUPERMARKET  
AND CHURCHES

PHONE (Area Code 715) 543-8398



## *The Rest Haven*

ON REST LAKE

Formerly Rudy's Rest Haven

### THE HOUSE OF GOOD FOOD

UNDER NEW MANAGEMENT

—Serving Hours—

Cocktail Lounge: 11 a.m. to 1 a.m.

Dining Room: 11 a.m. - 2 p.m. — 4:30 - 8:30 p.m.

Sandwiches Served at All Times in the Lounge

**German Foods Our Specialty**

**Also**

**Delicious Corned Beef**

IN THE HEART OF MANITOWISH WATERS

PHONE 543-2122

RITA AND BILL EHRICH

## LIFE OF RILEY COTTAGES

On Rest Lake — Across from Airport



Modern Furnished Cottages

Sandy Beach — 2 Bedrooms

Write: Kenneth Lyon

Ph. 543-2121

Manitowish Waters, Wis.



### OUR MODERN HOMELIKE COTTAGES

Are located on the lakefront, spaced for privacy, and are equipped for housekeeping, with gas ranges, refrigerators, electricity, hot and cold running water, showers, toilets, sinks and automatic gas heat. Deep freeze service.

A QUIET MODERATE SIZE RESORT where the entire family enjoys their vacation. Well kept grounds. 1 - 2 and 3 bedroom cottages.

REASONABLE RATES by the week, month or season. Special rates up to the last week in June and after Labor Day.

All our boats are new and take up to 25 h.p. motors.

### HUTTER'S LAKE VIEW RESORT

PHONE 715-543-8856

MANITOWISH WATERS, WIS. 54545

You'll enjoy your stay at...

HUTTER'S

# Lake View

RESORT

MODERN HOUSEKEEPING COTTAGES

Located on Lake Manitowish

SAFE BEACH





IF YOU MUST FISH - Fish Where They Catch Fish

## Bazso's HILLCREST COTTAGES

Modern Housekeeping Cottages - Half Mi. off U.S. 51

Center of Manitowish Waters Chain of Lakes

All cottages are on the Water Front

Automatic Gas Heat

Mosquito Controlled

RATES \$60.00 to \$90.00 PER WEEK

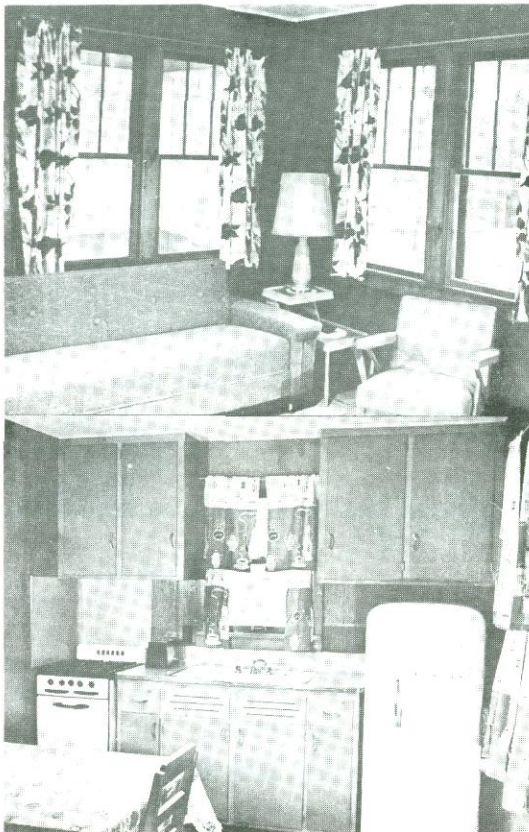


For Further Information, Write or

Phone (Area Code 715) 543-8822

**GEORGE and MABEL BAZSO**

MANITOWISH WATERS, WISCONSIN



## BIRCHWELL LOG CABINS

ON STAR LAKE

OF THE MANITOWISH CHAIN

Ultra modern 2 and 3 bedroom cabins; accommodate 2 to 8 persons; all deluxe twin beds; automatic heat; electric appliances; excellent boats in rate; private piers; raft; outside lighting; shuffleboard; grills; TV antenna; mosquito control; special rates spring and fall. Also 1 deluxe seasonal home.

LEE E. POWELL

PHONE 715-543-8330

MANITOWISH WATERS, WIS. 54548





# The ILG'S Welcome You

## TO A VACATION OF HAPPINESS

... is located on beautiful Rest Lake on the Manitowish Waters Chain of 14 lakes. We have completely MODERN cottages with 2 and 3 bedrooms.



Our Mosquito Controlled Grounds and Sandy Beach are Ideal for Families

Special rates until last week in June and after Labor Day.

Write for further information to ...

## JOE ILG'S RESORT

Joe and Esther Ilg  
MANITOWISH WATERS, WIS. 54545  
Phone 715-543-8880

## SUNNY COVE RESORT

on Beautiful Alder Lake  
CONNECTED TO 10 OTHER LAKES

— SAFE SANDY BEACH —

Modern private cottages, 2 bedrooms, all equipped for house-keeping. Hot and cold running water, inside toilets, showers, gas range and refrigerators. Bed linens furnished.

Boat with each cabin. Good walleye fishing also Musky, Northern and pan fish. We freeze your fish. Motor rentals.



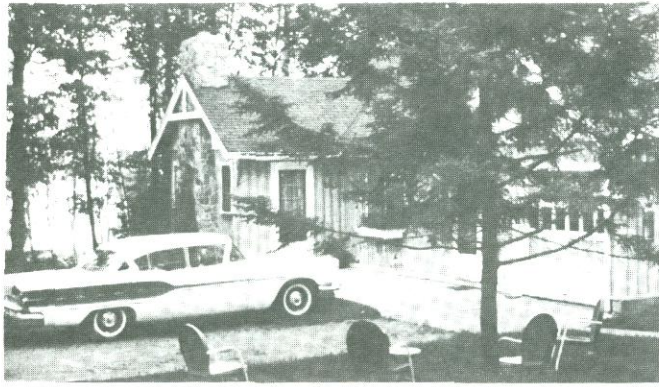
← Two of Our Happy Guests

For More Information Write to:

**SUNNY COVE RESORT**

Phone 715-543-2155 — Box 218  
Manitowish Waters, Wis. 54545





# Sinning's

on  
ISLAND LAKE



Completely Furnished  
**MODERN**  
HOUSEKEEPING  
COTTAGES

Bath with hot and cold running water. Electric lights - Gas ranges - Saf-aire automatic heat. Stone fireplace - Twin beds with innerspring mattresses.

For good fishing —  
MUSKIE — PIKE  
BASS  
PANFISH

**BEST FISHING—SPRING AND FALL**



No pets  
allowed

We are located on the south end of beautiful Island Lake, at the head of the famous Manitowish Waters chain of lakes.

For further information write:

**MRS. FRANCES FITZGERALD**

MANITOWISH WATERS, WIS. 54545

PHONE (Area Code 715) 543-2156

Winter Address—BOULDER, JUNCTION, WIS. 54512  
Telephone 715-385-2126



## GO SNOWMOBILING

OVER MILES  
OF SCENIC TRAILS



## SKIING — SKATING



ENJOY THE NEW  
CRAZE OF THE NORTH!

Snowmobiles Available on a  
Rental Basis by Hour, Day or Week

## THE PEA PATCH

Located on Vance or Dam Lake

Modern Housekeeping Cottages

Automatic gas heat

Modern Appliances

Stores, Bait, meals, all in walking distance

Excellent, sandy beach

Mosquito controlled

Noted for its  
Musky, walleye, northern, panfish & Sturgeon

No Pets Please

**CHARLEY and INEZ PEA**

Phone 715-543-2177

Manitowish Waters, Wisconsin

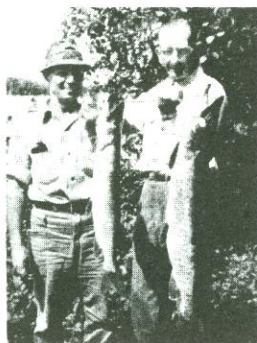


Sturgeon caught in Vance Lake





# Evans' ALPINE Lodge



## ON VAN VLIET AND CRAB LAKES

Against a background of the famous Presque Isle waters region, the heavily wooded strip of land on which the Alpine Lodge is located, is a perfect setting for your vacation. The lodge itself, of rustic log construction, has all the modern facilities necessary for your comfort. A large lounge with huge natural fireplace and comfortable furnishings, including TV, provides a friendly place to relax.

The main lodge houses a small lounge where beer and soft drinks are served and the recreation or game room where billiards, ping pong, a stereo record player, etc. may be enjoyed.

Shuffle Board and Horse Shoe courts on grounds.

Water skiing is regulated with the convenience of the fisherman uppermost in our mind.

Fishing — Walleyes, muskies, northerns, bass and pan fish.

Delicious meals have been approved by authorities on good food.

All cottages have hot and cold running water, showers and toilets.

Complete hotel service for your comfort.

We have daily mail service, telegraph and long distance telephone service.

Golf courses, dance pavilions, and well known night-spots are within easy driving distance.

Evans' Alpine Lodge is open from the middle of May to October 15. Write for rates and colorful folder.

**DAVID J. EVANS, Box R, MANITOWISH WATERS, WIS. 54545**

**PHONE PRESQUE ISLE (715) 686-2551**





## HOW TO USE MAP . . . . .

*On the map on the next page, you will find all of our members and local advertisers and their locations in the town. The list is arranged alphabetically, and the page number on which their ad appears, together with the code number on the map are adjacent. To find Housekeeping cottages, Bars, Restaurants, or American Plan resorts, look under that column, and then find it on the map under its code number.*



*The Manitowish Waters Chamber of Commerce is a member of the Vilas County Chamber of Commerce, the Wisconsin State Chamber of Commerce, the Resort Association of Wisconsin, and advertises in Wonderful Wisconsin. It gladly cooperates with any other organization promoting the Northern Wisconsin Vacationland.*

## WHAT YOU WILL FIND IN MANITOWISH WATERS:

Airports  
Ambulance Service  
American Plan Resorts  
Antique Shops  
Archery Supply Industries  
Bakery  
Barber Shop  
Boating  
Catholic Church  
Community Church  
Chamber of Commerce  
Cranberry Growers  
Drug Store  
Electric Service and Supplies  
Episcopal Services  
Fire Department  
Fire Tower

Fishing Guides  
Garages & Service Stations  
Golf Course at Trout Lake  
Grocery Stores  
Hardware Stores  
Health Camp  
Hotels  
Housekeeping Cottages  
Information Booth  
Laundromat  
Liquor Store  
Motels  
Plumbing Shop & Service  
Post Office  
Driving Range  
Realtors  
Restaurants

Riding Stables  
Sandwich Shops  
Skeet & Shooting Range  
Sportsman's Club  
Sportswear Shops  
Souvenir Shops  
Supper Clubs  
Swimming Beach  
Tackle Shops  
Taverns  
Telephone Exchange  
Variety Store  
Water Skiing  
Wisconsin Bowman's Club  
Women's Ready To Wear



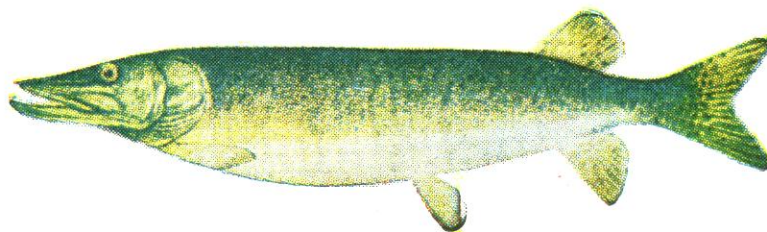
# Manitowish Waters Game Fish

Take a boy out fishing and he'll be a better man!

## MUSKELLUNGE

### DESCRIPTION

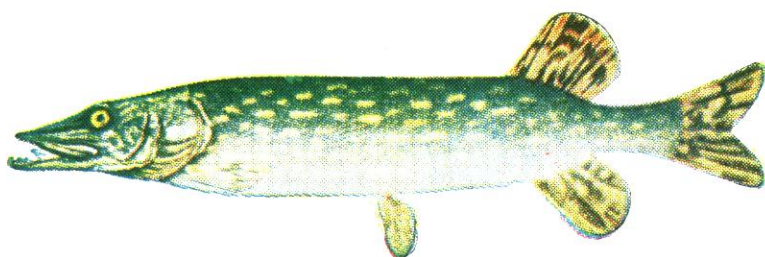
The general form of the muskellunge is similar to that of the common pickerel or northern pike. They reach a length of six or seven feet and specimens have been caught which weigh fifty to sixty pounds. Color is dark gray; sides having broken and unbroken stripes on a silvery background; the head is larger than that of the pickerel and both the cheek and the opercle are scaled above but unscaled on the lower halves.



## GREAT NORTHERN PIKE

### DESCRIPTION

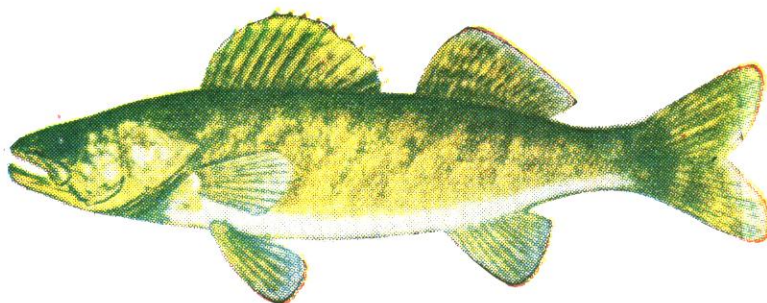
This is an elongate slender type of fish with a color of greenish and bluish gray with more or less purplish luster on the back and sides. Yellowish below and white on belly. Sides with irregular rows of small round yellowish and gold spots. The top of the head is dark olive green; mouth slender and large. One of the most consistent marks for identification of this species is that the entire cheek is scaled while only the upper half of the opercle is scaled and the lower part is bare.



## WALLEYE OR PIKE PERCH

### DESCRIPTION

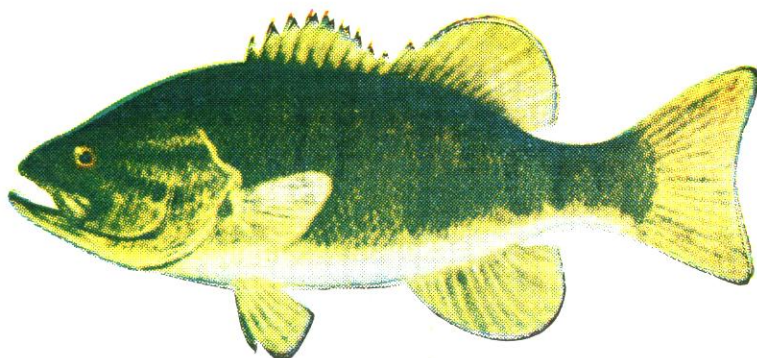
The walleye is a slender fish moderately compressed. Generally the color is brassy yellow and gold shading to olive and yellow mottled with brass. The belly and sides are white tinged with green; head is slender and tapered; lower jaw slightly shorter than the upper. It has two separate distinct dorsal fins and the mouth is well supplied with strong teeth. The flesh is white, firm, and delicately flavored.



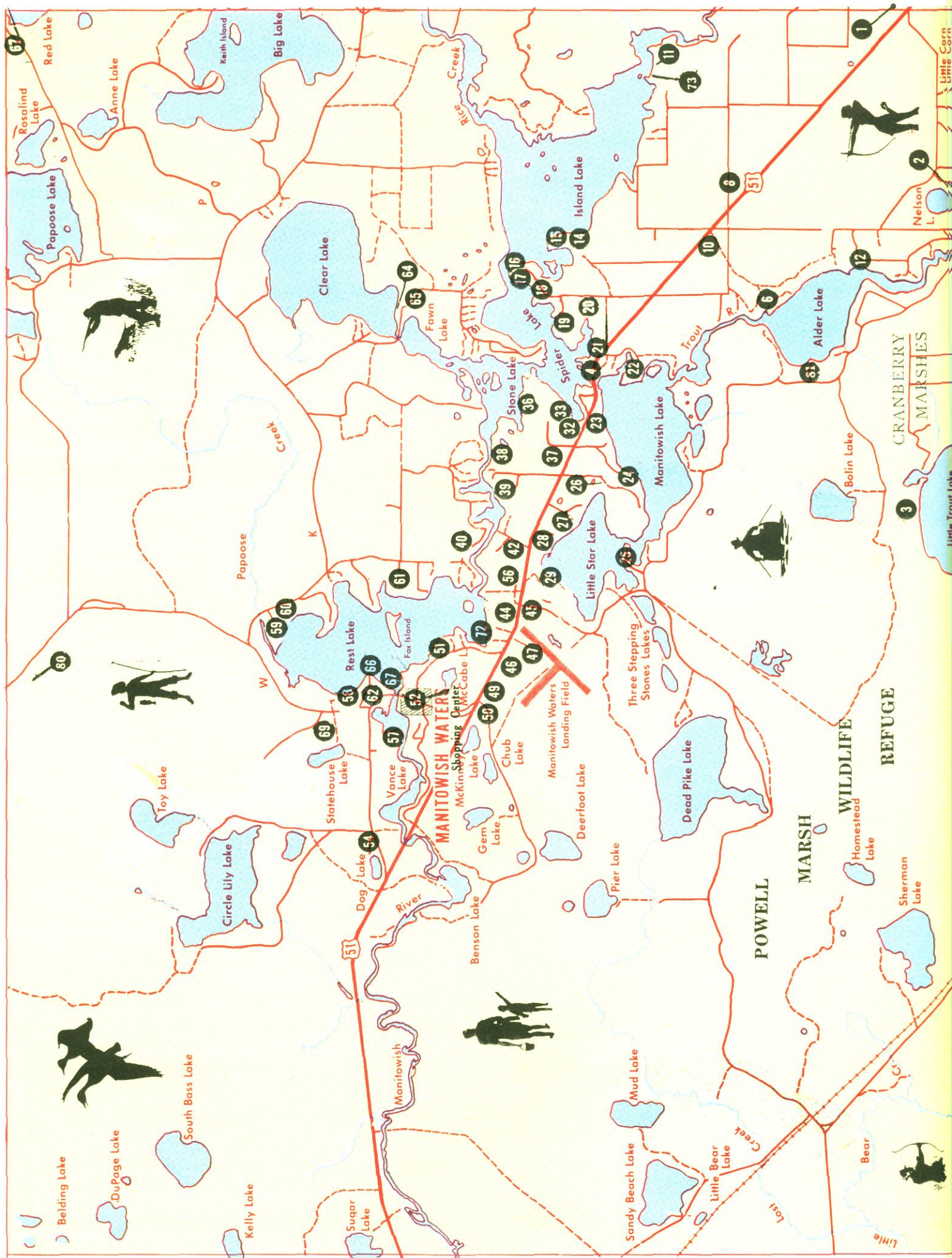
## SMALLMOUTH BLACK BASS

### DESCRIPTION

The general color of the smallmouth black bass is dark golden green with a brownish luster which may be blotched with darker spots along the sides. The mouth is large but the corner of it does not extend past eye.









# MANITOWISH WATERS, WISCONSIN

APR - American Plan Resort      HC - Modern Housekeeping Cottages      ONC - Overnite Cottages      B - Bar      R - Restaurant

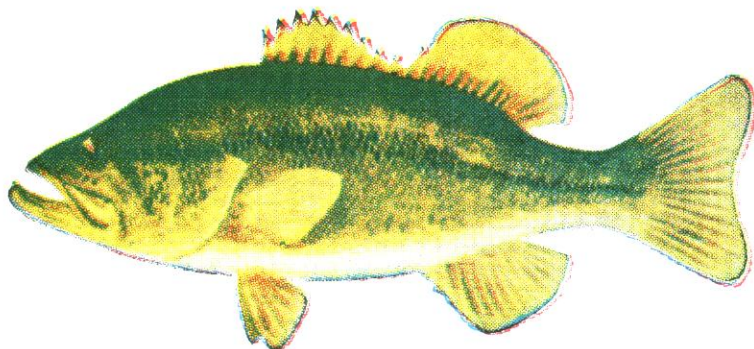
| Location<br>on Map | Page | Resort                                      | Owner                      | Sym.      | Location<br>on Map | Page | Resort                    | Owner                   | Sym.      |
|--------------------|------|---|----------------------------|-----------|--------------------|------|---------------------------|-------------------------|-----------|
| 40                 | 21   | AMONG THE PINES                             | Norman Astle               | HC        | 72                 | 26   | LIFE OF RILEY             | Kenneth Lyon            | HC        |
| 32                 | 16   | ASCHENBRENNER'S<br>MANITOWISH WATERS RESORT | Louis Aschenbrenner        | HC        | 27                 | 11   | LITTLE BOHEMIA LODGE      | E. Wanatka, Jr.         | B-R-ON-AP |
| 38                 | 27   | BAZSO'S HILLCREST COTTAGES                  | George Bazso               | HC        | 36                 | 20   | LORWOOD RESORT            | Evelyn Peterson         | HC        |
| 39                 | 18   | BIRCH BAY CABINS                            | E. Michaelis and Sons      | HC        | 58                 | 22   | OAK GROVE COTTAGES        | Irma and Mel Steil      | HC        |
| 18                 | 19   | BIRCH COVE COTTAGES                         | Frank Knopp                | HC        | 58                 | 22   | PERKIN'S BAY COTTAGES     | Ellen and Ken Perkins   | HC        |
| 25                 | 27   | BIRCHWELL LOG CABINS                        | Pearl Powell               | HC        | 64                 | 19   | QUO VADIS                 | Thad Gruzza             | HC        |
| 19                 | 10   | BREEZY POINT COTTAGES                       | Lloyd Voss                 | HC        | 61                 | 12   | RED FEATHER LODGE         | Ed. Schultz             | AP-HC     |
| 28                 | 17   | BUNN'S NORTHWOODS LODGE                     | Walter Bunn                | HC        | 80                 | 25   | SCHOLL'S LENELLE LODGE    | Len Scholl              | AP-HC     |
| 15                 | 17   | CAIN'S MODERN COTTAGE                       | Marty Cain                 | HC        | 11                 | 29   | SINNING'S COTTAGES        | Olive Fitzgerald        | HC        |
| 80                 | 20   | CAR-LEE CAMPSITES                           | Carlton Tretfin            | Campsites | 20                 | 21   | SKROBOT'S PEACEFUL PINES  | Len Skrobot             | HC        |
| 22                 | 14   | DEER PARK LODGE                             | Ben Epstein                | B-R-ON-AP | 14                 | 24   | SLEIGHT'S WILDWOOD RESORT | Dick and Helene Sleight | HC        |
| 67                 | 31   | EVANS' ALPINE LODGE                         | David S. Evans             | APR       | 59                 | 11   | SPONER'S REST LAKE RESORT | Bob & Chris Sponer      | HC        |
| 70                 | 15   | HENNING'S COTTAGES                          | Fritz Henning              | HC        | 12                 | 28   | SUNNY COVE RESORT         | Steve Lewandowski       | HC        |
| 24                 | 26   | HUTTER'S LAKEVIEW RESORT                    | Lydia Hutter               | HC        | 17                 | 22   | TAMBURRINO'S LINDENWOOD   | August J. Tamburrino    | HC        |
| 51                 | 28   | JOE ILG'S RESORT                            | Joe F. Ilg, Jr.            | HC        | 81                 | 23   | THE LAMB'S                | Joseph Lamb             | HC        |
| 73                 | 25   | ISLAND TWINS COTTAGES                       | C. Stackner                | HC        | 52                 | 30   | THE PEA PATCH             | Charles and Inez Pea    | B-ON-HC   |
| 2                  | 23   | JENSEN'S NORWAY                             | S. K. Jensen               | HC        | 8                  | 15   | THE RUSTIC MANOR          | Everett Stiemke         | B-R-ONC   |
| 6                  | 23   | JOHNSON'S MILL POINT COTTAGES               | H. Johnson                 | HC        | 21                 | 13   | VOSS' BIRCHWOOD LODGE     | A. Dickerson            | AP-B-R-ON |
| 6                  | 23   | JOHNSON'S TUCKAWAY LODGE                    | Charles and Marian Johnson | HC        | 23                 | 15   | WARNER'S RESORT           | Julien Warner           | HC        |
| 33                 | 9    | JONES' PINE ACRES                           | Vic Jones                  | HC        | 65                 | 16   | WAUKEGAN LODGE            | Toni and Arne Clare     | HC        |

## CHAMBER OF COMMERCE BUSINESS MEMBERS

| Location<br>on Map | Page | Business                                      | Location<br>on Map | Page | Business   |
|--------------------|------|---|--------------------|------|--|
| 47                 | 37   | Airport                                       | 60                 | 47   | Gay Roe, Contractor and Builder                    |
| 29                 | 37   | Ambulance (Volunteer Fire Department)         | 47                 |      | Golf Driving Range                                 |
| 60                 | 47   | Russ Braun Painting                           | 52                 | 41   | Hanson's Hardware, General Supplies                |
| 44                 | 22   | Bytof's Carry Out Foods                       | 8                  | 53   | Harry's Super Market, Meats, Groceries, Supplies   |
| 37                 | 37   | Catholic Church (See Schedule at Resort)      | 8                  | 53   | Harry's Sport Shop, Bait, Tackle                   |
| 49                 | 37   | Community Church (See Schedule at Resort)     | 10                 | 40   | Lakeland Realty Co., Real Estate                   |
| 47                 | 4    | Chamber of Commerce Information Booth         | 52                 | 48   | Laundromat, Open Every Day                         |
| 4                  | 10   | Chain O' Lakes Marina Launching Service       | 52                 | 48   | LaPorte's Super Market, Meats, Groceries, Supplies |
| 3                  | 52   | Cranberry Grower's Association Cranberry Bogs | 29                 | 43   | Little Star Garage, Mobil Service, Motors          |
| 47                 | 4    | Community Center—Town Hall                    | 16                 | 17   | Lawrie's Highland House                            |
| 62                 | 42   | Dietz Service Station                         | 52                 | 50   | Ox Yoke, Gifts, Antiques                           |
| 52                 | 46   | Doolittle-Barden, Inc., Realtors              | 52                 | 41   | Patterson Bros., Inc.                              |
| 29                 | 37   | Fire Station (Volunteer Fire Department)      | 52                 | 37   | Post Office, Stamps and Mail                       |
| 44                 | 45   | Flying "P" Riding Academy                     | 56                 |      | Pine Lawn Cemetery                                 |
| 1                  | 40   | Fritz Beauty Salon—Fritz Repair Shop          | 67                 |      | Rest Lake Dam                                      |
| 52                 | 47   | Ron N' Reel, Bait, Tackle, Repairs            |                    |      |  |
| 52                 |      | Shopping Center                               |                    |      |  |
| 50                 |      | Ski Hill, Rope Tow, Winter Operation          |                    |      |  |
| 66                 | 61   | Skating Skeeters, Water Ski Shows             |                    |      |  |
| 42                 | 49   | Snell's Tackle Box, Bait, Tackle, Boats       |                    |      |  |
| 26                 |      | Star Beach Park, Picnic Grounds Only          |                    |      |  |
| 45                 | 56   | Telephone Office                              |                    |      |  |
| 52                 | 43   | The Country Store, Supplies, Toys, etc.       |                    |      |  |
| 52                 | 48   | The Oasis, Mixed drinks, sandwiches, pizza    |                    |      |  |
| 52                 | 26   | The Rest Haven, Fine Food, Cocktails          |                    |      |  |
| 46                 | 60   | Truflight Mfg. Co., Feathers for Arrows       |                    |      |  |
| 57                 |      | Vance Lake Campground, State Owned            |                    |      |  |
| 69                 |      | Youth Conservation Camp, State Owned          |                    |      |  |
| 52                 | 48   | Winter's Resort Shop, Fine Sports Clothes     |                    |      |  |



# Manitowish Waters Game Fish



## LARGEMOUTH BLACK BASS

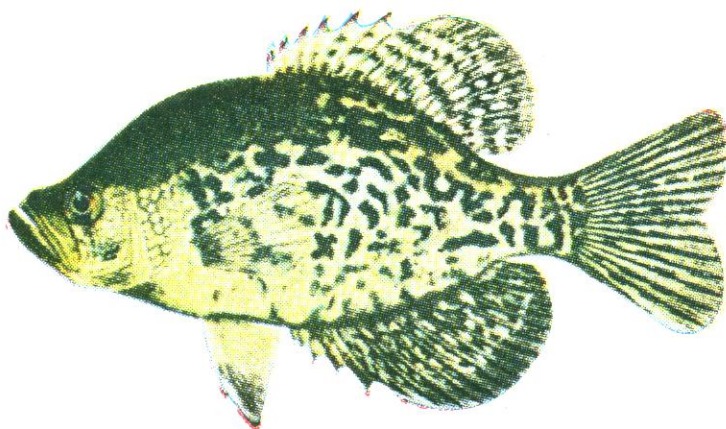
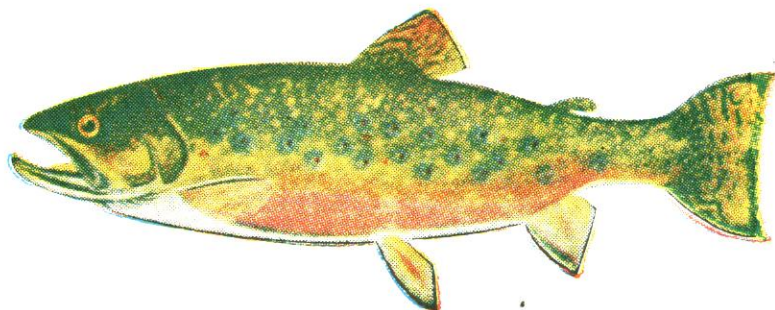
### DESCRIPTION

General color is dark green above, sides and below greenish silver; three oblique dark stripes across the cheek; belly is white. The head is large and the mouth very wide, the corner of which extends beyond the eye.

## BROOK TROUT

### DESCRIPTION

General color is black and may be more or less mottled or barred with red spots along the sides. The body is oblong, moderately compressed, head rather large but not long; snout bluntish; mouth large with the maxillary reaching beyond the orbit; caudal fin slightly lunate in the adult, and forked in the young.



## CRAPPIES

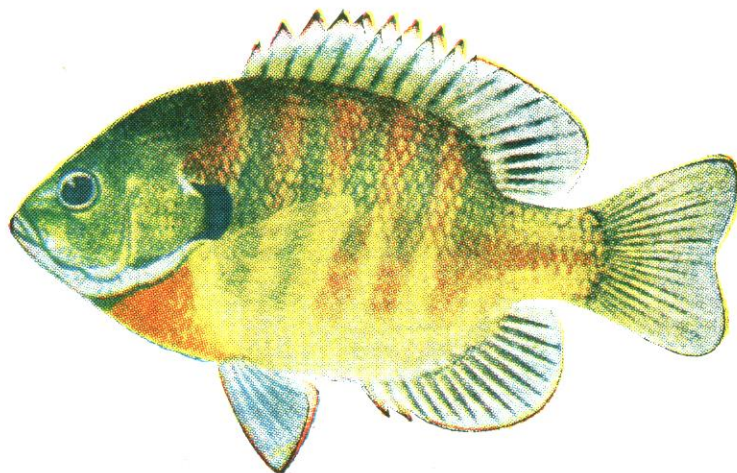
### DESCRIPTION

There are two species of crappies in Wisconsin known as the common or white crappie and the black crappie or calico bass. The chief difference between the black and white is that the white has six spines in the dorsal fin and a plain anal fin while the black has seven spines in the dorsal and a strongly reticulated anal fin. Outside of these two exceptions the two crappies are almost identical in appearance. They reach a maximum length of twelve inches and weigh slightly more than one pound.

## BLUEGILL

### DESCRIPTION

Length sometimes reaches ten to twelve inches but they are a comparatively short and compressed fish. The nose is upturned in appearance; the color light to dark olive with luster of purple to lavender; belly yellow or rich yellowish brown. Head short; mouth small and oblique; the opercular flap is very broad and of a rich velvety black color; side with three or four broad dark greenish bars; fins are all greenish.







### COMMUNITY CHURCH

Manitowish Waters, Wis

#### Summer Services

10:00 a.m. .... Church School

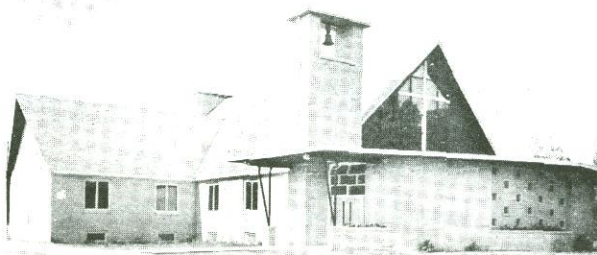
11:00 a.m. .... Morning Worship

#### Winter Services

9:00 a.m. .... Morning Worship

10:00 a.m. .... Church School

The Community Church invites you, during your stay in the Northwoods, to worship with us each Sunday morning. "Church families are happy families".



### OUR LADY, QUEEN OF PEACE

MANITOWISH WATERS, WIS.

FATHER WALTER TORKILDSON, Pastor

Mercer, Wisconsin, Phone 715-476-2697

Manitowish Waters, Phone 715-543-8428

— SUNDAY MASSES —

Schedules are posted locally



### Manitowish Waters Airport

Location: LONG. 89° 32' 30". LAT. 46° 07' 30".

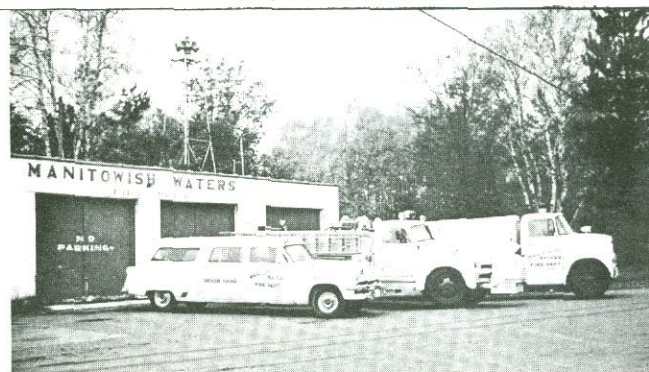
Field elevation 1609 feet M.L.S. Shown on lower right corner of Lake Superior Sectional Chart.

Two fine, sod, well-marked runways, 3000 feet long by 300 wide running east-west and 3800 feet long by 300 feet wide running northeast-southwest.

Aviation oil and gasoline, Hangar and tie down facilities, Rental aircraft — Charter Service Hertz service — Weather information available.

ON HIGHWAY 51

PHONE 715-543-8320



## .....for your protection

IN

### MANITOWISH WATERS

- FIRE DEPARTMENT
- AMBULANCE SERVICE
- RESCUE AND OXYGEN EQUIPMENT

PHONE 715-543-8800

SHOP IN

MANITOWISH WATERS

## POST OFFICE

SHOPPING CENTER

MANITOWISH WATERS, WISCONSIN

54545

*In Beautiful Wisconsin*

AMERICA'S VACATION LAND



## HAZLEWOOD Insurance

MINOCQUA, WISCONSIN

Office 356-5500 — Residence 356-5689



**GENERAL INSURANCE**

WHEN YOU NEED IT BAD — YOU NEED IT GOOD



**HAZLEWOOD-TAYLOR AGENCY**

Mercer, Wisconsin

Phone 476-2380



## Vacation . . . Retire

BEYOND  
THE TENSION LINE!

in  
Beautiful  
Manitowish Waters Country

LAKE SUPERIOR DISTRICT  
POWER COMPANY



Located in the Shopping Center of the Northwoods Resorts.

Where Tourists Receive Prompt, Courteous Attention

Where Accounts of Seasonal Residents are Always Welcomed

MEMBER  
FEDERAL RESERVE SYSTEM  
FEDERAL DEPOSIT INSURANCE CORP.



YOUR FULL SERVICE  
COMMERCIAL BANK



**CRANBERRIES**  
**EAGLE RIVER PRODUCTS**  
and  
**OCEAN SPRAY**

**MANITOWISH WATERS**  
**CRANBERRIES GROWERS**

**Growers**

Manitowish Cranberry Company  
Leasure-Koller Cranberry Company  
Folsom Cranberry Company  
Alder Lake Cranberry Company  
Weber Cranberry Company  
Cardinal Cranberry Company  
J. E. McFarland Cranberry Company

**Manitowish Waters**

**Wisconsin**

# Security State Bank

MINOCQUA, WISCONSIN

**SAFETY DEPOSIT  
BOXES**

**NITE DEPOSITORY**



TELEPHONE 356-3222



ACCOUNTS INSURED

UP TO \$15,000 BY FEDERAL DEPOSIT INSURANCE

## HOWARD HARDIE

**REALTOR**

Have Recreation and Business listings in Northern Wisconsin and Upper Michigan

Let me know type of property you are interested in.

HUNTING LANDS 40 to 440 ACRE PARCELS

**318 Silver St.**

**HURLEY, WISCONSIN**

OFFICE PHONE 561-5414 — HOME PHONE 561-5068

## E. FARRELL KRAUSE AGENCY



**GENERAL  
INSURANCE**

PHONE 356-3771

8248, U.S. 51 — South of Minocqua, Wis.

LOVELY APPAREL FOR WOMEN  
PERSONALIZED SERVICE  
in a  
DELIGHTFUL ATMOSPHERE

COMPLETELY AIR-CONDITIONED

**EVA WURL**

"Youthful Feminine Apparel"

Across from the Ironwood Theater

Phone 932-1722

Ironwood, Michigan

## McKevitt - Kershner - Patrick COMPANY, Inc.

FURNITURE — BEDDING — CARPETING

Complete Furnishings for Cabins, Cottages  
and Resorts

212-14-16 South Suffolk Street

**IRONWOOD, MICHIGAN**

Phone 932-1130





# FRITZ'S

MECHANICAL REPAIRING  
OF ALL KINDS



BEAUTY SALON

PHONE BOULDER JUNCTION 385-2374

1 Mile North of Country Road H on U.S. 51

# Yeschek - Stone Realty, Inc.

IN THE PROFESSIONAL BUILDING

Minocqua, Wisconsin



— OFFICE PHONES —

Main Office Minocqua — 356-5262

Branch Offices:

Manitowish Waters — 543-8806

Lac du Flambeau — 588-3591

Specializing in vacant lake frontage



# LAKELAND REALTY COMPANY

SERVING BUYERS AND SELLERS IN THE LAKELAND AREA FOR OVER 15 YEARS



FOREST DOWNS SUBDIVISION in the beautiful St. Germain area will be opened in the Spring of 1970. Approximately 100 lots in a unique setting and developed with you in mind. These lots are all heavily wooded with interesting terrains. Parcels of 100 feet of lake shore will be dedicated from time to time as new sections are opened up. When all lots are sold there will be approximately 1000 feet of beautiful low bank sandy beach park area which will be dedicated to Forest Downs property owners for their use. All sites will be restricted to assure harmony in pattern and design. This heavily wooded development is within a short distance of the village of St. Germain at the intersection of Highways 155 & 70. Here all immediate shopping is available and neighborhood and community services necessary for convenient living are at hand. Both highways provide easy access to Eagle River, Sayer, Minocqua and Rhinelander. Write and make an appointment to see these soon. Terms available.

TO BUY OR SELL BE  
SURE TO CONTACT US  
FOR ALL TYPES OF  
NORTHERN PROPERTIES

## FRANCHISE LOCATIONS

2500 feet of choice U.S. 51 frontage in Manitowish Waters for Lease or will Build for Suitable tenants

## FOR RENT

Buildings suitable for cheese shop, antique or gift shop on U.S. 51, Manitowish Waters

Fence Lake: Showplace of the north; ideal for corporations; main home is 175 ft. long and has separate 6 bedroom guesthouse, each with outside entrances and fireplaces; boathouse with private dredged bay and causeway; 3 year round homes, greenhouses, workshop, garages, etc.; outside barbecue house in a Hollywood setting; all under ground sprinkling, blacktop drive, trap and skeet range, private trout pond, 25 buildings in all; on 3,700 ft. of the choicest frontage on the chain. Offered in its entirety or we can subdivide as to your wishes. Shown by appointment only.

VACANT LAKE FRONTAGE—East Twin, \$35. a ft.; West Twin \$35. a ft.; Carlin Lake \$35. a ft.; Lee Lake \$35 to \$55 a ft.; Flambeau Flowage \$30 a ft.; To To Tom \$40 a ft.; Fence Lake \$60 a ft.; Big St. Germain \$75 a ft. Off lake lots with access to Big St. Germain at \$3500.00. Terms available.

WALLIS E. KLEIST, Broker

U.S. Highway 51 (South), Box 378, Woodruff, Wisconsin 54568, Phone 715-356-6072

OR

U.S. Hwy. 51 (South), Box 153, Manitowish Waters, Wisconsin 54545 Phone 715-543-8812





### THE OASIS BAR

The Northlands Friendly Retreat  
Where Fishermen and Hunters Meet.

**Mixed Drinks - Chili - Pizza - Sandwiches**

Your Hosts  
Jerr and Mary Vincent

At the Junction of W and K  
Manitowish Waters, Wisconsin  
Telephone 715-543-8360

# LUMBER

## ONE STOP BUILDING SERVICE

All Building Materials, Hardware  
and Paint

Contract Building

Prompt, Courteous Service

## PATTERSON BROS., INC.

Phone 543-8888

Manitowish Waters, Wisconsin 54545

# Hanson's V & S Hardware

Whirlpool Appliances

Maytag Washers  
and Dryers

Plumbing  
Supplies

McCulloch  
Chain Saws

Hardware  
Supplies

Sporting Goods



RCA TV

Zenith TV

Housewares

Tru-Test Paints

Electrical  
Supplies

Lawn & Garden  
Supplies

Bottle Gas

**- Your Vacation Supply Headquarters -**

NOW SERVING YOU FROM TWO LOCATIONS

Manitowish Waters, Phone 543-8333

Minocqua, Phone 356-3611



## MARCHINO TAXIDERMY STUDIO

3 miles north of Woodruff, Wis.  
on U.S. Highway 51

Phone 356-3842



*Mounting of Fish, Birds, Animals and Game Heads. We will make into Rugs . . . Bear - Coyotes - Bob Cats and Fox or Lamps - Gun racks - Ash trays - thermometers from your Deer Feet.*

*Where experience and quality has served the Sportsman for 40 years.*

**Stop In And Visit Our Wildlife Displays  
of Mounted Specimens**

**NO ADMISSION CHARGE**

## EVINRUDE - CHRYSLER

**Outboard Motors — Sales & Service**

ALPEX, CHRYSLER AND  
LARSON GLASS BOATS

ALUMACRAFT AND  
MIRRO CRAFT ALUMINUM BOATS

ALUMA CRAFT CANOES

ALPEX AND SAILFISH SAILBOATS

**See us for fleet discounts and finance plan**

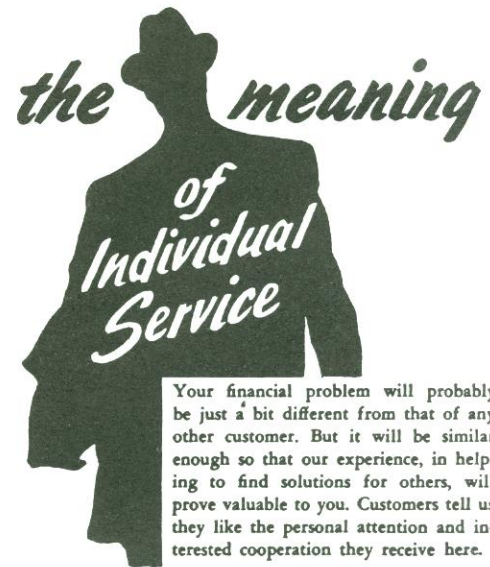
*Daily Delivery to Manitowish Waters*

## RAY SMEETH

DRY DOCK AND  
SPORTING GOODS

IRONWOOD, MICHIGAN

Phone Ironwood 906-932-4210 — Manitowish Waters 715-543-8859



Your financial problem will probably be just a bit different from that of any other customer. But it will be similar enough so that our experience, in helping to find solutions for others, will prove valuable to you. Customers tell us they like the personal attention and interested cooperation they receive here.

*May we be of service to you?*

## IRON EXCHANGE BANK

**Hurley, Wisconsin**

ENTERING OUR 85th YEAR

OF  
COMPLETE BANKING SERVICE TO THE  
GOGEBIC RANGE AND RESORT COMMUNITIES

**Member of the Federal Deposit Insurance Corp.  
and Federal Reserve System**

WE INVITE ALL TOURISTS AND RESORTERS TO CALL  
ON US WHEN IN TOWN

## The First National Bank of Ironwood

*"THE BANK OF SERVICE"*

**Member F.D.I.C.**

**PHONE 932-1620**

**IRONWOOD, MICHIGAN**







FOR RESORT  
HOME and INDUSTRY

**LAKES PROPANE GAS CO.**

Phone 356-5771

Night Phone 356-5808 or 356-5853

Area Distributors

Hanson's Hardware — Phone 543-8333

Manitowish Waters, Wis.



**LAKES PROPANE GAS CO.**

Minocqua, Wisconsin

**LAKELAND AGENCY**

*Insurance*

Jesse J. Johnson, Agent

**INSURE TO BE SURE**

P.O. Box L

Phone 356-6060

U.S. Highway 51 — Half Mile North

**MINOCQUA, WISCONSIN 54548**



**LITTLE STAR GARAGE**

*"EVERYTHING FOR THE CAR"*



- ★ Wheel Balancing and Alignment
- ★ United Motors Service
- ★ IH Cub Cadet Sales and Service
- ★ Outboard Rental and Service
- ★ Complete Automobile Service
- ★ Open Year 'Round

Highway 51

Phone 543-8300



Fern and Henry Wellome

**YOU**

**To Our New Country Store**

Mens, Womens and Childrens Clothes

Toys, Novelties, Souvenirs

Infant Wear

Moccasins and Keds

**Shopping Center**

**Manitowish Waters**



# BOB DIETZ'

( Carol and Bob )

## STANDARD STATION

CLEAN REST ROOMS

Phone 543-2144

### COMPLETE AUTO SERVICE

— LUBRICATION —

WRECKER SERVICE

Sun Tune-Ups —:— Tires and Batteries —:— Stewart-Warner Wheel Balance  
Outboard Engine Service —:— Expert Mechanical Service

Prompt Courteous Service - Open All Year - Call Manitowish Waters 681

Soft Drinks —:— Ice Cream —:— Candies —:— Cigars —:— Cigarettes —:— Post Cards



In Shopping Center, County "W"



For fast efficient delivery of Standards gasolines, greases, diesel fuels, motor oils and American heating oils with Sta-Clean.

(Our Perfection kerosene, heater oil, and furnace oil.)

If you want the Best call Herman

Serving Vilas and Iron Counties for 16 years

## HERMAN JAEGER

Phone 476-2500

MERCER, WISCONSIN



You expect more from standard  
and you get it!



## Flying "P" Riding Academy, Inc.

Scenic Woodland trails with  
Abundant Wildlife



Horses for all types of riders  
Experienced guides available  
Moonlight rides on request

Highway 51—Across from the Airport

## SMITH BROS. MARINE, Inc.

BOATS — TRAILERS — BOAT HOISTS  
MARINE ACCESSORIES

JOHNSON OUTBOARD MOTORS — SKI-DOO SNOWMOBILES

Lawn Boy Power Motors

McCulloch Chain Saws

Johnson Skee-horse Snowmobiles

Corner U. S. Highway 51 and Wisconsin 70

MINOCQUA, WISCONSIN — PHONE 356-5551

## Walter Meyer's Sausage Company

"High Grade Sausage our Specialty"

HURLEY, WISCONSIN

IRONWOOD, MICHIGAN

### VILLAGE SODA GRILL

Soda Fountain—Sandwiches—Greeting Cards  
Books—Magazines—Newspapers—Drugs  
Sundries—Cosmetics  
Manitowish Waters, Wisconsin

### NORTH STAR BEVERAGE CO., INC.

Life Has A Lot to Live—  
Pepsi Has A Lot to Give

### NORTHERN MATTRESS COMPANY

719 - 21 N. Third Ave. Wausau, Wisc.

Manufacturers of Mattresses since 1919



Distributors of  
Furniture : Floor Coverings : Appliances

"Buy Direct And Save The Difference"

Visit our Show room or

Write for Our Representative to Call

FREE DELIVERY BY OUR TRUCKS TO YOUR DOOR

## ....Mercer Lumber Company, Inc.

COAL : LUMBER : BUILDING MATERIAL : PAINT

On U. S. Highway 51



PHONE 476-2441

NORTHWOODS BUILDING HEADQUARTERS

MERCER, WISCONSIN





MEMBERS STATE M.L.S. & WISCONSIN TRADERS CLUB  
ALL TYPES OF WISCONSIN RECREATIONAL PROPERTIES



STATE WIDE  
RECREATIONAL  
REAL ESTATE  
SERVICE

— MAIN OFFICE —  
Minocqua, Wisconsin 54548  
PHONE 715-356-5246

BRANCH OFFICES —  
Manitowish Waters,  
Wisconsin 54545  
Phone 543-8844

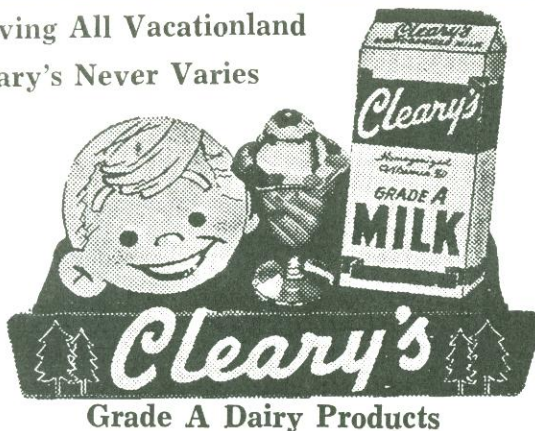
GERRARD REALTY CORP.  
La Crosse, Wisconsin 54601

A GRUENINGER & CO.  
Milwaukee, Wisconsin 53202

LUCEY REALTY SERVICE  
Madison, Wisconsin 53705

"THERE WILL ALWAYS BE MORE PEOPLE, BUT THERE WILL NEVER BE MORE LAND"

Serving All Vacationland  
Cleary's Never Varies



**ERSPAMER LUMBER COMPANY**

DEPENDABLE DEALERS IN  
**Coal — Building Materials**  
INSULATION, PAINT AND FUEL OIL  
One Block North of Intersection of U.S. 51 and Main St.  
PHONE 561-3660 HURLEY, WISCONSIN

**J. R. SATRAN & SONS**

Publishers of the  
**Vilas County News Review—Vacation Weekly**  
Offset Lithography — Letter Press Printing  
Eagle River, Wisconsin

"WE WELCOME EVERYBODY"

Weekly Fishing Contest — 5 Rods Awarded Each Week

**MERCER HARDWARE CO.**

POLARIS SNOWMOBILES Ed and Ray  
LUND ALUMINUM BOATS — EVINRUDE MOTORS SALES AND SERVICE

Sporting Goods—Mautz Paint—Homelite Chain Saws—Plumbing Supplies

SERVICE AND QUALITY

TOYS  
APPLIANCES  
ELECTRICAL SUPPLIES

2 Floors to Serve You — Instant Bank Financing  
Phone 476-2445 Mercer, Wisconsin

LICENSES  
WALLPAPER  
RED JACKET PUMPS



# Russ Braun

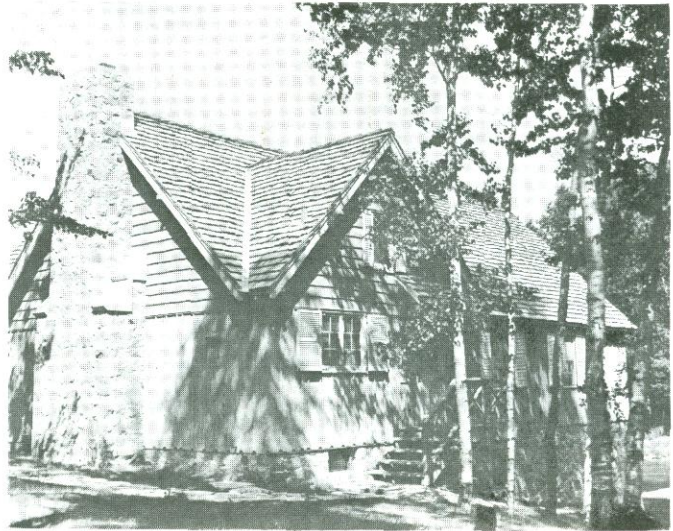
PAINTING CONTRACTOR



Paper and Vinyl Hanging  
Drywall Tapeing



Phone 543-2152  
on Rest Lake  
Manitowish Waters, Wisconsin



**GAY ROE**

PHONE 543-8448

**BUILDER - GENERAL CONTRACTOR**

**MANITOWISH WATERS, WISCONSIN**



HOMES

COMMERCIAL BUILDINGS

SUMMER COTTAGES

BOAT HOUSES



**The Rod 'N Reel**

CY AND MAXINE DALL

**FISHING TACKLE EXPERTS**

*Live Bait — Fishing Tackle*  
*Free Fish Freezing — Archery Supplies*

**SHOPPING CENTER**

PHONE 715-543-8377

MANITOWISH WATERS, WIS. 54545

**AHLBORN PRINTING**

715-356-5411

Minocqua, Wisconsin 54548

Publisher of this Booklet





# La Porte's Super Market

By Rest Lake Dam



MANITOWISH WATERS MOST COMPLETE FOOD STORE

SHOPPING CENTER

MANITOWISH WATERS, WISCONSIN

PHONE 543-5422

## La Porte's LAUNDROMAT

Dry cleaning pick-up service

OPEN 24 HOURS DAILY

LAPORTE BUILDING  
SHOPPING CENTER  
MANITOWISH WATERS, WISCONSIN

## Winter's

RESORT SHOP, INC.

CASUAL WEAR  
FOR  
TOWN and COUNTRY

YOU CAN COUNT ON US FOR  
FRESH NEW APPAREL

YOU'LL GET FRIENDLY  
GREETINGS — AND  
HELPFUL ASSISTANCE  
WHEN YOU SHOP AT —  
WINTER'S — PHONE 543-8988



# Snell's Tackle Box, Gift Shop and Marine

MANITOWISH WATERS, WISCONSIN

Right on Highway 51 —:— Phone 715-543-8336

EVERYTHING FOR THE FISHERMAN AND HIS FAMILY

COMPLETE LINE OF DEERSKIN PRODUCTS

- BAIT
- TACKLE
- LICENSES
- SKI RENTAL
- ROD RENTALS
- FISH FREEZING
- GUIDE SERVICE
- MOTOR RENTALS



Moccasins

Jewelry

Gifts

Toys

Souvenirs

SNELL'S MARINE — MERCURY SALES & SERVICE

Mechanic on Duty —Licensed Motor Storage Available

IN DOLHUN'S RENT-ABOAT SYSTEM

*Estabrook's*  
INCORPORATED  
*Insurance*

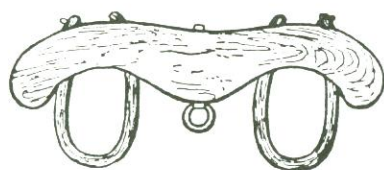
LARGEST INSURORS OF SUMMER PROPERTY IN WISCONSIN



PHONE 362-2444

RHINELANDER, WISCONSIN 54501





## The Ox Yoke

ANTIQUES AND GIFTS  
INDIAN MOCCASINS

— New Addition —

**FRANCES BEAUTY SALON**

Manitowish Waters in Shopping Center

Phone 543-2133

**STERN AND FIELD**

FEATURING



IRONWOOD, MICHIGAN

PHONE 932-3311

Fishermen, hunters and those who know the joys of living, working or vacationing in Wisconsin's Northwoods, see us for all kinds of select property. Frontage,\* Cottages,\* Homes,\* Resorts,\* Businesses,\*

**Dobrinski Real Estate**

Expert Service from Long Experience

Phones—Office 356-5656 - Home 588-4571

MINOCQUA, WISCONSIN, 54548

**SALLY'S SHOE SHOP**

**Featuring Shoes for Entire Family**

WOMEN—

Naturalizer, Joyce, Hush Puppies

CHILDREN—

Jumping Jacks

MEN—

Nunn-Bush, Crosby Square

*Lakeland State Bank*  
WOODRUFF, WISCONSIN



*"Lakeland's Leading Bank"*

WITH OFFICES AT

**Manitowish Waters and Boulder Junction**



MEMBER  
FEDERAL DEPOSIT  
INSURANCE CORP.



COME SEE WHAT ALL THIS  
AREA IS TALKING ABOUT!

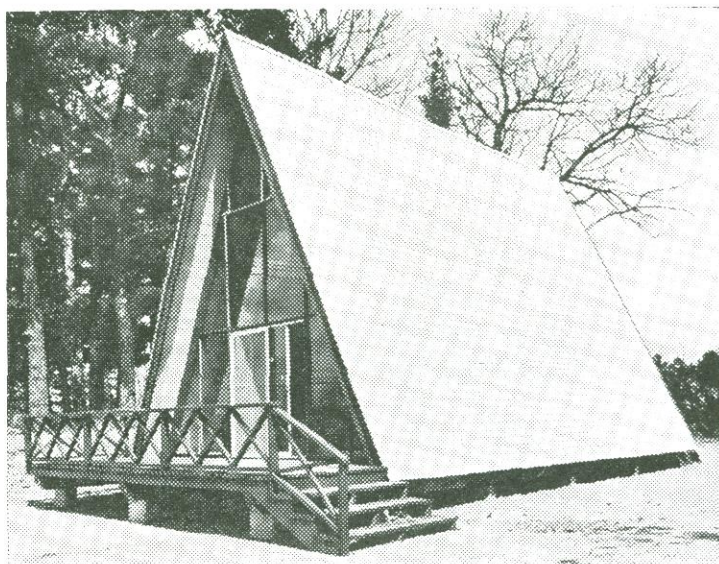
## MODEL COTTAGE

Featuring

## A-FRAME DESIGN

NEXT DOOR TO OUR OFFICE

WELL WORTH A VISIT



Amazingly Low Cost ..... Fast Construction  
Dramatic Appearance .. Many Attractive Designs

Modern Showrooms ..... Large Stock

Highway 51 ..... Phone 356-5233

MINOCQUA, WISCONSIN 54548



**Manitowish Waters** *for your vacation...*





**JOHN ALBERT**  
Jeweler  
Kresge Building  
AURORA STREET IRONWOOD, MICHIGAN

**WOODRUFF PHARMACY**

The Rexall Store  
AT THE CROSS TRAILS OF THE NORTH  
PHONE 356-5855 — WOODRUFF, WISCONSIN

JACK BERTAGNOLI, Distributor  
BLATZ, BOSCH, MILLER HIGH LIFE, GETTELMAN BEERS  
HURLEY, WISCONSIN

**AHLBORN PRINTING**

STRIVING DAILY TO SERVE YOU BETTER  
Phone 356-5411 MINOCQUA

**ST. JAMES HOTEL, Inc.**  
IN THE HEART OF DOWNTOWN IRONWOOD

Featuring Noon Lunches and the  
Nightly Famous Charcoaled Broiled Steaks  
A Stop on the Nationally Known Lake Superior Circle Tour Trip

"WE'D LIKE TO BE YOUR BANKER"



**MERCHANTS  
STATE  
BANK**

FULL FRIENDLY SERVICE RHINELANDER, WIS. 54501

**O. K.  
AUTO PARTS**

**INC.**



Ironwood, Michigan

**Setterlund Cleaners**

Your "Custom Care" Cleaner

Phone 932-4332 211 E. McLeod Ave. Ironwood, Mich. 49932

COMPLETE SOFT DRINK SERVICE

**COCA-COLA—SPRITE—TAB—FRESCA  
SUN-RISE BEVERAGES  
CANADA DRY PRODUCTS**

COCA-COLA BOTTLING CO. Phone 362-3131 Rhinelander

**The FIRST NATIONAL  
BANK of Rhinelander**



Member Federal Deposit Insurance Corporation, Federal Reserve System

**BERGQUIST AMUSEMENTS**

JUKE BOX—BOWLING—I . O . L

PHONE 932-2500 IRONWOOD, MICHIGAN

Phone Hurley  
561-4270

**PAUL'S STORE**  
IN HURLEY & ANTIGO

Phone Antigo  
623-4234

A Complete Line of Clothing For Every Member of the Family  
ANTIGO, WIS. "Northern Wisconsin's Finest" HURLEY, WIS.

**JOHNSON MUSIC STORE**

A trusted Name with Trusted Service Since 1896

**Hammond Organs**

EVERYTHING IN MUSIC & HOME APPLIANCES  
PHONE 932-1611 IRONWOOD, MICH.

For Extra Savings Shop at  
SEARS in Ironwood

IT'S A CONVENIENT "ONE STOP" SHOPPING SERVICE  
Everything for the Home—Resort—Sportsman—Automobile

**RHINELANDER SAVINGS & LOAN**

LOANS FOR HOMES—COTTAGES—RESORTS  
PHONE 362-3688 RHINELANDER, WIS. 54501





## Harry's Super Market . . .

CHOICE MEATS CUT TO ORDER

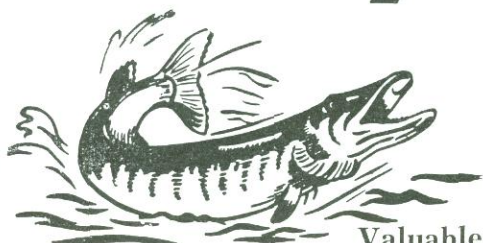
BETTER FOODS FEATURED

RURAL DRUG SUPPLY - TOYS - SUNDRIES - NEWSPAPERS

DRY ICE

ICE CUBES

## Harry's Sport Shop . . .



—FREE FISH FREEZING—

Live Bait and Tackle of all Kinds.

Valuable Grand Prizes for The Season, of Largest Fish Registered.

**HARRY'S SUPER MARKET and SPORT SHOP**

Phone: Manitowish Waters 543-8866



# NEUVILLE & COMPANY, Inc.

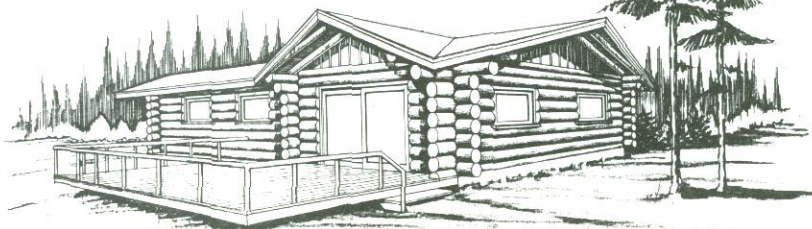
Phones: Office 356-3255 — Residence 356-3177

Box 169MW, Minocqua, Wis. 54548

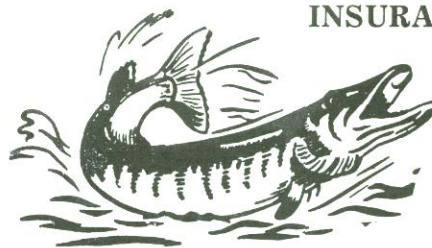
## See Us First

— For —

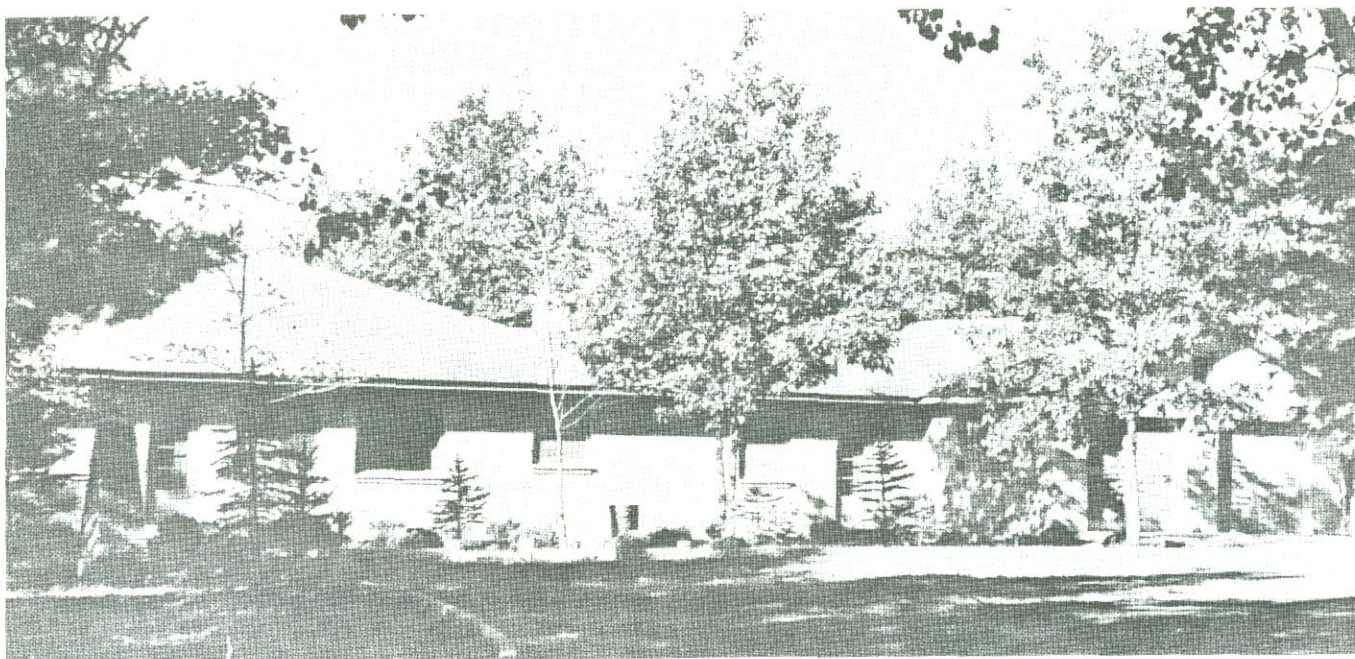
*BETTER BUYS  
IN THE NORTH*



### INSURANCE



- LAKE LOTS
- INEXPENSIVE COTTAGES
- SUMMER HOMES
- ESTATES
- TAVERNS
- RESORTS
- NIGHT CLUBS
- MARINE BUSINESSES
- OTHER BUSINESSES



## PUKALL LUMBER COMPANY

RETAIL LUMBER — BUILDING MATERIALS — SUPPLIES

Phone 356-3252

ARBOR VITAE, WISCONSIN  
On Hwy. 70 — 1/2 mile north of Hwy. 51

P. O. Woodruff, Wisconsin



# Charles M. Gibson Agency, Inc.

## ALL FORMS OF INSURANCE

Summer Property Coverage is a Specialty

RHINELANDER

PHONE — 362-2020



Shop In Air-Conditioned Comfort  
In Our  
New Modern Department Store

IRONWOOD

MICHIGAN

LAKELAND PRINTING CO., Inc.

Publishers of the

**LAKELAND TIMES**

*Commercial Printing*

MINOCQUA, WISCONSIN

PHONE 356-5236

**LAHTI CHEVROLET-CADILLAC INC.**

Phone 932-1101

Ironwood, Mich.

**BOB MATZ MOTORS**



Phone 356-3242

Sales and Service  
Minocqua, Wisconsin

FOR DEPENDABLE LP-GAS SERVICE  
CALL

**PETROLANE**

BULK  
&  
BOTTLE

**WAMPUM SHOP**

"Shop for Everything"



Licenses — Fishing Tackle — Souvenirs

—Clothing—



Mercer, Wisconsin

1015 LINCOLN ST.

PHONE 362-5400

Rhineland, Wisconsin

GRANT VAN GORDER, Manager



## UNIVERSAL TELEPHONE COMRANY OF NORTHERN WISCONSIN, INC.

A Subsidiary of  
UNIVERSAL TELEPHONE, INC.

SERVING: Boulder Junction, Manito-  
wish, Manitowish Waters, Mercer, Pres-  
que Isle, Springstead and Trout Lake.

## Visit



Hand Feed the Native Animals  
Birds and Fishes

Photograph the Goats on the  
Towers and Suspension Bridge

Everyone Bottle Feeds the Babies in the  
Nursery at Uncle Pat' Farm

8 MILES EAST OF BOULDER JUNCTION  
ON HIGHWAY "K"

## RENT A CANOE

SKI BOATS — SAIL BOATS  
BY THE DAY OR WEEK

For a Real Vacation



## THRALL BOAT & CANOE SHOP

Chrysler Outboard Motors & Boats  
Sales and Service

General Boat Repair — Sales & Service

- WINTER STORAGE
- INBOARD REFINISHING AND SERVICE
- OLD TOWNE CANOES
- SCUBA AIR AND SUPPLIES — RENTALS

23 YEARS EXPERIENCE

Arnold Thrall Phone 356-5367 Woodruff, Wisconsin

— Compliments of the —

## Woodruff Hardware Co.

The COMPLETE Hardware Store

Corner of Highways 47 and 51

Your Assurance of  
COMFORT - STYLE - BEAUTY  
... A FUR BY

## NEWMAN'S FURS

225 East Aurora St.

Ironwood, Michigan



# Superior BOTTLED GAS CO.

Gas Appliances — Home Heating Installed

*CLEAN, DEPENDABLE LP GAS*

Top Quality Fuel Oils No. 1 and No. 2

*Service With Us Is No Sideline*

PHONES: Mercer Office 476-2660, Ironwood, Mich. 932-0720

Plants at: IRONWOOD, MICH. and MANITOWISH, WIS.

## NORTHLAND GARDENS

FLOWERS - PERENNIALS - SHRUBS - EVERGREENS

Minocqua, Wisconsin

Phone 356-5242

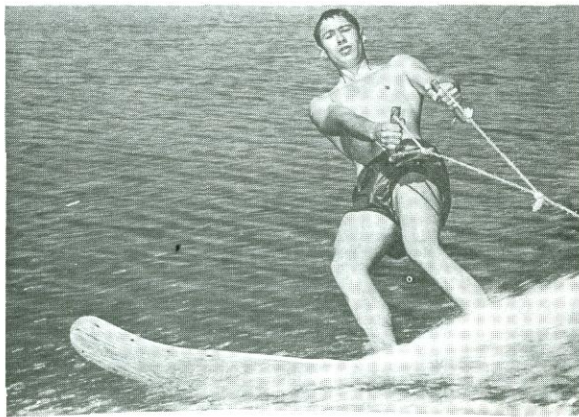
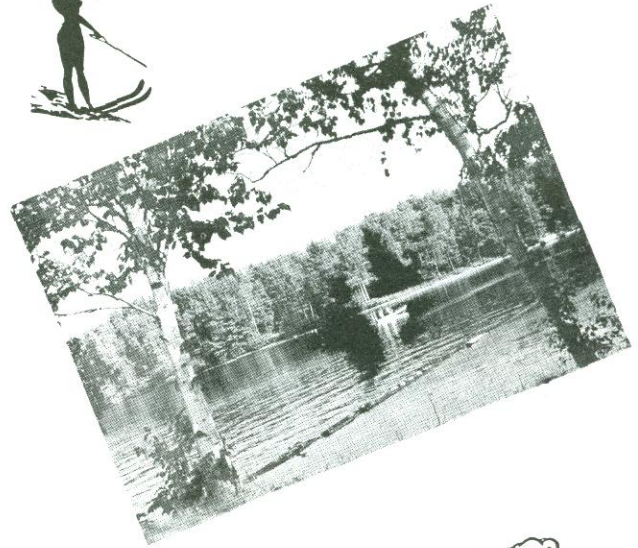
G. W. Goetzelman



Home Phone:

Lake Tomahawk

BRown 7-2366



## Manitowish Waters has



Experienced and successful Resort operators dedicated to serve the vacationist.

★★

Clean, comfortable Resort accommodations with rates for every income, situated on the beautiful shorelines of good fishing lakes.

★★

A Chamber of Commerce and members pledged to sincere and honest advertising.

★★

An envied reputation of satisfied guests returning year after year.

★★

Complete shopping and services for Resort guests.



Manitowish Waters, "Barefoot Water Skiing Capitol of the Midwest," in 1968 marks the 13th summer of organized water ski shows and activities on its lakes.

The Skiing Skeeters have as their predecessors the young members of the Manitowish Water Boat Club, a group established to foster water safety and interest in water sports. Skiers in the boat club presented ski shows on Manitowish and Rest Lakes and even at community celebrations elsewhere. The only boats and equipment used for the shows was owned by the skier-members or loaned by generous residents.

The present group is a 1961 revival that took the name, Manitowish Waters Skiing Skeeters. Summer residents and all-year inhabitants form a membership of over 50 individuals. Members are selected on the basis of interest and cooperation as well as skiing talent, and they move up the ladder from junior to senior or full membership status.

The club owns an elaborate dual-motored towboat and pick-up boat, extensive skiing, lighting and public address equipment, and maintains all its equipment at its own expense. Its only financial support comes from members' dues and voluntary contributions from the public. Its ski show bowl and headquarters are on Rest Lake near the dam.

The activities of the group lie in three spheres: entertainment, social and competitive.

Two evenings a week—Wednesdays and Sundays—the Skeeters and lovely Skeeterettes present free ski shows, each an eighty minute array of acts highlighted by jumping, barefoot skiing a pyramid and ever popular clown routines.

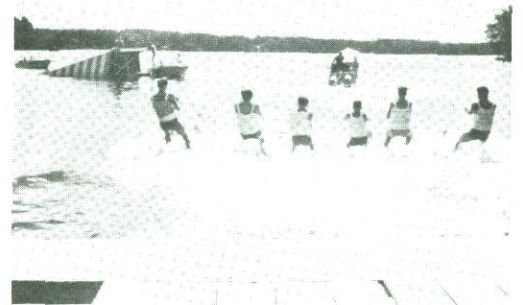
The club has been sponsoring weekly dances in the Community Center following the Wednesday shows. The dances are open to the public. Private activities include a corn roast, tournament weekend festivities and an annual banquet.

Annually in August they stage their barefoot competition, the Beier Barefoot Tournament, open only to club members.

The first statewide barefoot tournament held anywhere in the USA was sponsored by the Skeeters in 1964, and the club played host again in August, 1966 and 1967 to the 3rd and 4th Wisconsin State Barefoot Tournament, for which skiers from all over the state congregate at Rest Lake Ski Bowl.

The Skeeters' interest in barefoot skiing has given them, 3 of the five top barefooters in the state, the state champion barefoot team 4 years in succession and a reputation for keen competition in the most difficult of all forms of skiing. The nationwide publicity accorded to the club have established its claim that Manitowish Waters is the "Barefoot Capitol of the Midwest."

## THE MANITOWISH WATERS SKIING SKEETERS



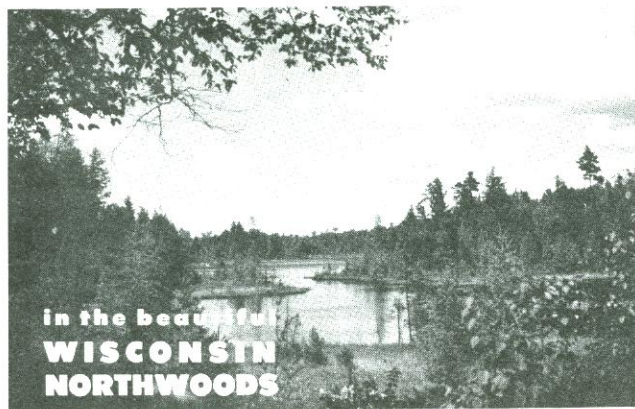


Plan to Visit Manitowish Waters During

## Colorama Days

SEPTEMBER 15 — OCTOBER 15

Enjoy Beautiful Scenery  
Cranberry Tours — Dance  
EVERYONE WELCOME



Many people who know how beautiful our Manitowish Waters area is in the summer—with its highland climate and its attendant freedom from most allergies—have never been up here during the fall season to see the brilliant colors which nature provides. It isn't always easy to predict the exact dates when coloring will be at its height, but usually from about September 20 until October 15 comes the period when the leaves pass through their fullest color. Maples, popple, birch, oak all contrast their vivid reds and golds against the dark green of the pines and firs to create a paradise for the color photographer.

Look out across our lakes and watch the opposite shoreline, morning, noon and especially at evening, when the setting sun hits the trees and brings out the full panorama of colors in our woods.

Fishing usually is good too, when the game fish are getting fattened up for winter and striking at lures and baits that they might ignore during the lush summer days. Sturgeon are in season in fall, and many fine specimens have been taken from our Manitowish River, below the Rest Lake dam. Each year the public celebrations planned for Colorama time are bigger and better, with many of our neighboring towns also participating. These include fish bakes, chicken barbecues, dances, color tours by road and lake, tours of cranberry marshes. All of these things are here to be enjoyed. Won't you make a reservation at your favorite resort for a week or weekend during the fall and give yourself a real treat?





## TRUEFLIGHT MANUFACTURING CO.

### *Manitowish Waters Success Story*

By — Michael J. Dunn, III

The name of Manitowish Waters is being borne all over the world, thanks to products of the Trueflight Manufacturing Co. In fact, across the seas the reputation of Manitowish Waters is exactly that of this unusual archery equipment manufacturer.

Trueflight was founded in 1946, and when it moved to our community in 1949, its owners decided to concentrate on processing the feathers used on arrows. They developed their own processes to split the shaft and cut the feather to size and dye it, and then themselves handcrafted the unique machinery to do the work. Manufacturing operations soon outgrew the original basement shop and spread to all other available space in town; packaging was done in their own homes by women employees. In 1957 the present large plant on highway 51 was built to consolidate the far-flung operations under one roof. So busy is Trueflight and its new subsidiary, Arrowmatic, Inc., that the new plant has always been operated on a two shift basis! Employment by the two firms is over 30, and additional local craftsmen derive income from work subcontracted to local woodworking and fiberglass molding shops.

The products of this firm are as interesting as its happy history. The firm was a pioneer not only in mechanically processing arrow feathers but has led the industry in marketing ready-to-apply feathers already die-cut to exact shape and size. It also markets bow accessories such as brush buttons to keep leaves out of the end of a stalker's bow as he travels in dense undergrowth. The company has shipped its wares to every continent on the globe. Europe is a major market for Trueflight merchandise; another important but surprising customer is Australia.

Following the name Trueflight across the nation and around the globe is the new name of Arrowmatic. This concern builds and installs archery lanes—indoor practice and competition archery ranges that feature shooting consoles, automatic foul-line equipment and unique push button automatic target returns which roll right up to the archer to allow easy retrieving of arrows.

Trueflight's far-shooting management is constantly at work developing new ideas into marketable products.



## — ASSOCIATE MEMBERS —

NICHOLAS BELL

EDMUND B. FITZGERALD

HAROLD GROSS

PALMER C. HANSON

MARIE E. PEPOWSKI

ERWIN E. FRITZ

WALTER MEINEL

RALPH SEELMAN

CARL THEILACKER

ROBERT BRAGG

CHERNE CO.

L. S. CLEMONS

GEORGE A. FEIEREISEN

RUDY A. LIST

Honorary Member—Charles S. Smith

## BOOKLET PHOTOS—COURTESY OF:

BUD MICHAELIS

MALCOLM LAWRIE

WISCONSIN CONSERVATION DEPT

CHARLES RAYALA

JOHN McFARLAND

BUD MICHAELIS

LEO ECKMAN

CHELLO DALLE AVE

LEONARD SKROBOT

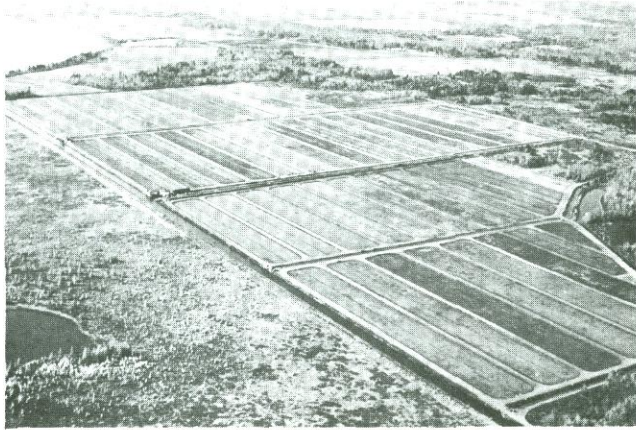
VOSS' BIRCHWOOD LODGE

BILL MEHL

JOHN BRUNNER

RICHARD SLEIGHT, Jr.





This aerial photo, taken by the author, writer, shows cranberry operations at Manitowish Waters, Wisconsin, during October 1964 harvest. In foreground are beds of 3 companies, around lake shore and beyond trees are four more sets. Water source is Little Trout Lake, upper left, whose level drops six inches on nights when all 7 growers flood their beds. Main water distribution artery is ditch in foreground. Note pleasing, orderly appearance created by beds. Photo by Michael Dunn

## CRANBERRY INDUSTRY IN MANITOWISH WATERS

By — Michael J. Dunn, III

Manitowish Waters boasts one of the largest concentrations of cranberry marshes in the state of Wisconsin, and its production of between thirty and forty thousand barrels annually is a potent factor in making Wisconsin the second largest cranberry raising state in the nation.

The operations of seven growers cluster around or near Little Trout Lake, in the southeastern corner of the town of Manitowish Waters, occupying several hundred acres of lowland that until 1945 was unproductive and useless marshland. Cranberry raising came to Manitowish Waters two decades ago not by accident but only because this area, than not even penetrated by roads, fulfilled the unique demands made by the extremely fussy berry. These needs include suitable soil, flat terrain, nearby sources of sand, and perhaps most crucial, an adequate supply of slightly acid water, the only type water cranberries can tolerate.

The land did not automatically yield to cultivation, and when seven of the eight participating growers planted their first vines in mid-1946, the occasion marked the climax of a year of cooperation and hard work, and an earlier year of planning.

Early preparation, handicapped by lack of roads and utilities at the outset, included laying out an elaborate network of common ditches, roads and canals. Only by such pooling of efforts could the new operators afford the expense of opening up and draining a virgin cranberry area. Though the peaty soil made cranberry growing more promising, it meant months of work leveling beds, scalping off the top growth, and construction of sand dikes that would both contain water to flood the long narrow beds, and also serve as roads. Most of the growers have an area of about fifty acres under cultivation or development, but the team effort of 1945-46 prepared only the first ten acres

for each grower; every operator has developed subsequent beds on his own. Long lean years still awaited the operators, since cranberries bear marketable yields of fruit only after 3 or 4 years.

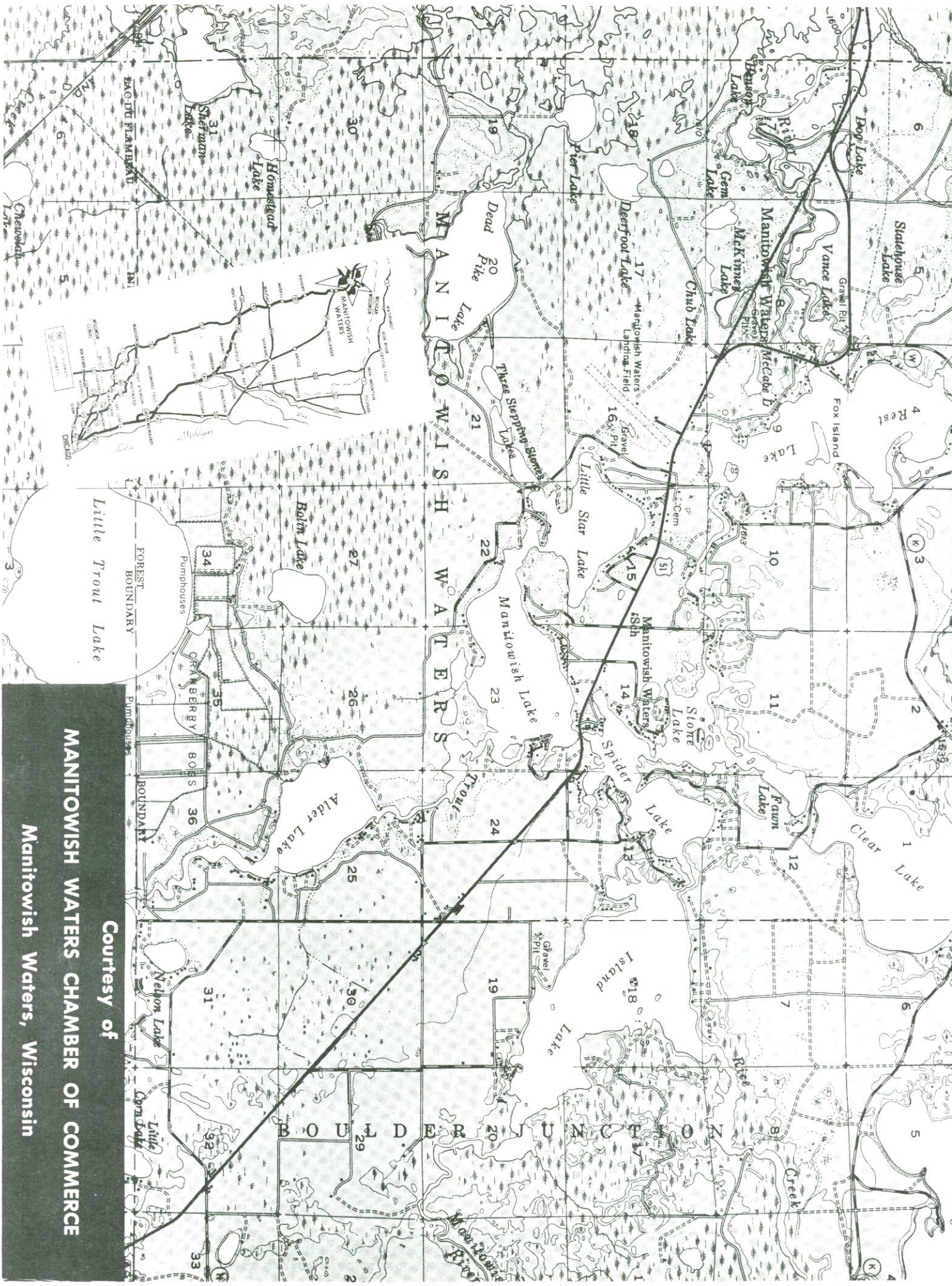
Into the ground of a dry and newly prepared bed, cuttings mowed from vines in a successful bed are pressed; flooding then helps set the vines, and their rooting is further encouraged by thin layers of sand spread every few winters over the ice covering them. At the time of the spring thaw the sand gently sifts down, helping also to discourage the weeds. (Flooding beds every winter protects the vines.) If the vines grow too rambunctious, mowing the excess vegetation has the same effect that pruning has upon fruit trees: it forces the energy into fruitbearing.

Safe chemicals help the grower combat pests, diseases and weeds. Weather is his dread foe. Summer hail storms may arise with no warning, giving the grower no chance to protect his beds against a bombardment that might destroy an entire season's hard work. Blossoms and fruit are vulnerable too to frost, and warfare against the cold means a constantly drawn battle. The arsenal of the cranberry raiser includes three main weapons. One local man uses a wind machine to circulate the frosty layer of air. Others spray water over the beds; the falling water absorbs cold that might otherwise attack the fruit. Most growers flood the otherwise solid and dry beds at the first sign of a freeze. Giant pumps flood the beds and then can be reversed to drain the water. The beds must be drained by sunup lest reflected rays bounce up from the water and burn the fruit from beneath. Thus long successions of sleepless nights are no novelty to the hardy souls who grow the berries we enjoy.

Harvest occurs the last third of September and on into October. The beds are flooded to soften the otherwise harsh effect of machinery and hip-booted workers laboring among the vines. Ingenious many-toothed picking machines gently pluck the berries and discharge them either into boxes or little boats, which are then towed on trailers to each growers warehouse. There the berries are cleaned of chaff, dried and stored until milling. Milling mechanically removes bad berries and grades the suitable ones. Eagle-eyed inspectors check all the fruit visually before allowing it to be packed; by hand they remove any irregular berries that have sneaked by the grading machinery. Shipping time lasts beyond harvest, sometimes into November. Winter finds the growers busy flooding, sanding and repairing equipment.

The all season appeal which cranberries are developing can be seen from the many ways they are shipped. Much fruit is shipped in one pound bags or boxes—many housewives freeze these for later use. A much greater amount of fruit is shipped in huge bags to processing plants which make popular standbys like cranberry jelly or ingenious new creations like cranberry-orange relish. Other berries find their way to processors of prepared frozen dinners; still others appear on breakfast tables the year round in the increasingly popular cranberry juice drinks.





Little Trout Lake

Courtesy of  
MANITOWISH WATERS CHAMBER OF COMMERCE

Manitowish Waters, Wisconsin



# Spend your honeymoon at Manitowish Waters



## **PLANNING A CONVENTION OR ORGANIZATION OUTING?**

You will find complete facilities at Manitowish Waters for successful and enjoyable get togethers. The Chamber of Commerce welcomes inquiries from groups interested in mixing a wee bit of Northwoods pleasure with business. Committees in charge of planning will be complimented by their organizations for offering "something different" to the members.

Whether you need accommodations for large or small groups in American plan or cottage surroundings, Manitowish Waters resorts can take care of your group to the satisfaction of all.

Sales inducements are another popular use for summer visits. More and more employers are finding expense-paid vacations offered to their selling force are a potent inducement toward bigger and better orders.

## **MANUFACTURERS, WHAT DO YOU MAKE?**

Are you engaged in light manufacturing? If so, the Manitowish Waters Chamber of Commerce suggests that you give consideration to locating in our area.

There are many advantages which include:

Unlimited supply of good water.

Labor available at fair rates of pay.

Transportation by two established truck lines serving directly, and two nearby railroads. Airport for executive planes.

Plus ideal living conditions.

## **THINKING OF MOVING, RETIRING OR ACQUIRING A SUMMER HOME?**

Living conditions in Manitowish Waters are ideal. Many families who first came as guests of our resorts have found this an ideal community to enjoy the Northwoods and have purchased or built homes here. A fine climate, the lakes, the woods and plentiful activities for young and old all ensure pleasurable and wholesome living. A fine consolidated high school and well staffed local grade school await children of new permanent residents.

Retirement has brought many couples to a new enjoyment of Manitowish Waters. Some remain all year to enjoy the leisurely pace of off-season living; others divide the year between Manitowish Waters and homes elsewhere.

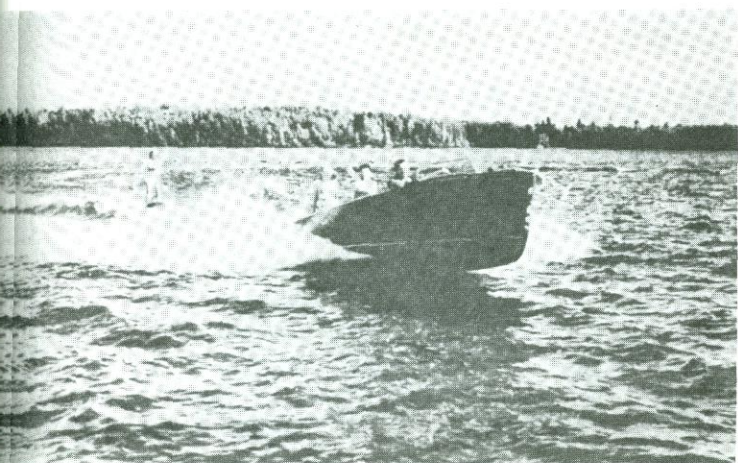
The Chamber of Commerce invites you and your family to enjoy a home of your own in Manitowish Waters.

By — Michael J. Dunn, III









## When you write to resorts . . .

. . . BE SURE TO GIVE COMPLETE INFORMATION

This enables the resort operator to give you a more satisfactory reply and to recommend the accommodations most suitable for your party.

**STATE TIME AND LENGTH OF STAY**, number of adults and children in party and state ages of children. Above all, do not overcrowd a cottage as nothing is gained and many times your vacation is less enjoyable.

**MANY FOLKS** are under the impression that you must come to the north country in July and August to enjoy the best weather.

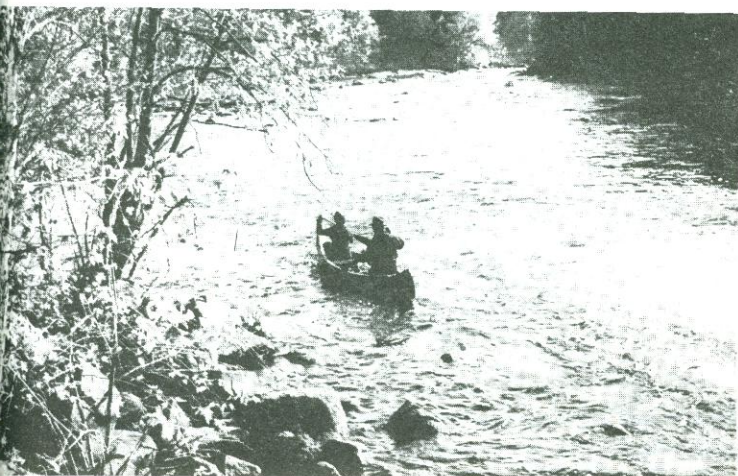
**UNDER NORMAL CONDITIONS**, we enjoy fine weather in May, June, Sept. and October, and better fishing, too. Then too, most resorts offer special rates in May, June and September as an inducement for the fishermen to come and get 'em.

**SEE THE NORTHWOODS IN COLOR** — a sight that is worth the trip. Color camera enthusiasts will have a rare treat. About the middle of September the woods begin to show nature's colors that defy an artist's reproduction. Don't miss it! It has often been said that September, with its warm sunny days and cool invigorating nights, is King of the season.

**SHOW THIS BOOK TO YOUR FRIENDS** who are planning a vacation. They'll appreciate getting information on our wonderful recreational area and it will aid them considerably in selecting their vacation spot.

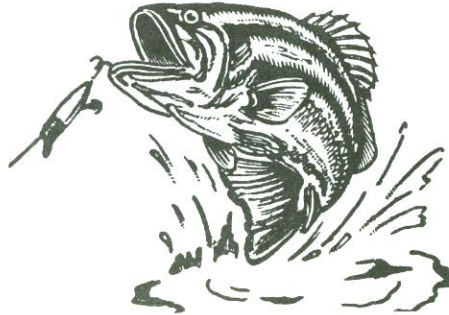
**MANITOWISH WATERS** is located in the most picturesque part of the Wisconsin Northwoods!

**SO — IF IT'S JUST A LOAFING VACATION, A FISHING VACATION, OR A HONEYMOON — THIS IS THE SPOT!**





# LET'S GO FISHING



Fishing at Manitowish Waters provides the thrill that fishermen dream about. Whether you prefer to cast, troll or still fish — this is the place! Here you will find any spot to your liking as the entire chain of lakes are all connected by navigable thoroughfares.

Come up to Manitowish and take on a Muskie — it's a thrill you'll never forget.

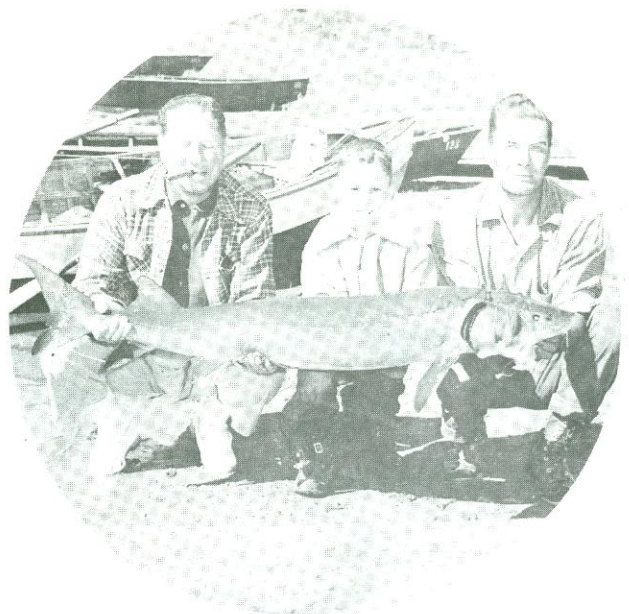
In addition to these famous tackle busters, you'll enjoy good Walleye Pike and Bass fishing. Panfish too!

Should you prefer to engage a guide, we have a number of good experienced men in the area. These men will do everything possible to make your fishing trip successful. They'll show you where and how to fish, and how to handle the big ones.

Manitowish Waters is not only an ideal spot for fishermen, but the entire family as well.

While fishing is, as a rule always GOOD at Manitowish Waters, for the BEST fishing we recommend either early or late in the season. At these times the BIG fellows are hungry and strike hard.

Don't overlook the thrill of catching a Sturgeon. Write your favorite resort about the opening dates of sturgeon fishing.





# FISHING CONTESTS

Musky

Walleye

Small Mouth Bass

Sturgeon

NO ENTRY FEE



Large Mouth Bass

Northern Pike

Cappie

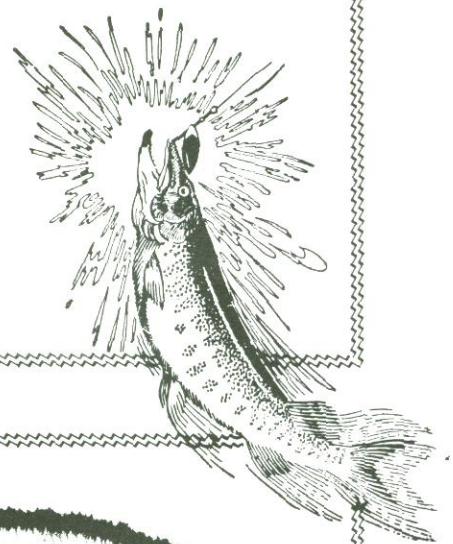
Pan Fish

Sponsored by Local Sport Shops — Be Sure To Enter Your Catches

*Vilas County Spring Musky Contest — May 18 - June 30*

*Colorama Musky Tournament — September 28 - October 6*

Get Information on Guide Service at Sport Shops and Resorts



*Manitowish Waters*

**MUSKY**

**MARATHON**



**MUSKY  
MARATHON**

MANITOWISH WATERS, WISCONSIN  
Home of the Tiger Musky

CHAMBER OF COMMERCE

OFFICE

FOR INFORMATION AND REGISTRATION, WRITE TO THE CHAMBER OF COMMERCE, MANITOWISH WATERS, WISCONSIN. NO FEE.

THIS

DATE

Manitowish Waters Chamber of Commerce

*Manitowish Waters Chamber of Commerce*

Join the many successful Musky Fishermen who have become a Manitowish Waters **MUSKETEER** by registering a legal musky caught in our area. Register your musky and receive a **MUSKETEER CARD** and a colorful shoulder patch — No fee.

Complete information and registration at all resorts.

**BE SURE TO ASK YOUR HOSTS.**





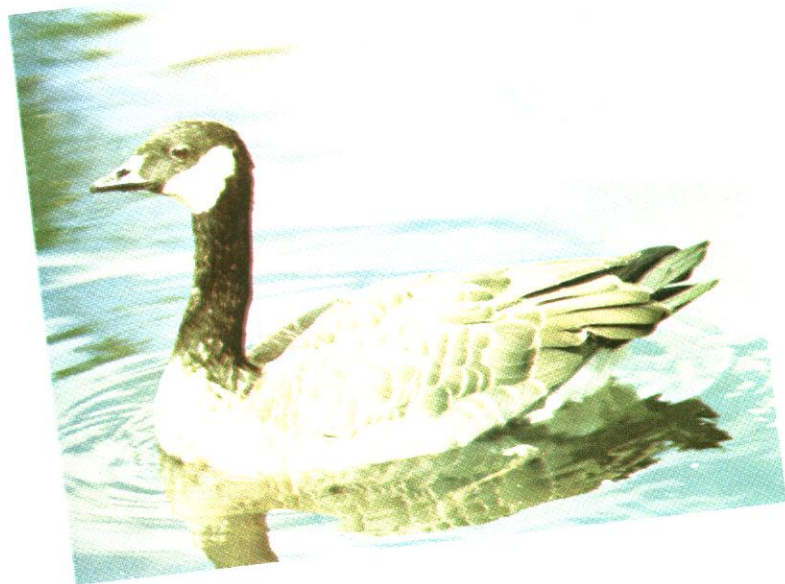
## *The Waters Of Youth*

**M**anitowish, an Indian name,  
**A**ll old timers proudly acclaim,  
**N**oted waters of health, sport and fun  
**I**n northern Wisconsin on route fifty one.  
**T**hey attract summer guests from far and near,  
**O**ld and young coming year after year,  
**W**hen all abandon toil and care  
**I**n outdoor life in pure pine air,  
**S**afe on sand beaches and timbered lands,  
**H**osts of welcome extending warm hands.

**W**hen calls of play arouse you  
**A**nd tell you vacation is here,  
**T**hat you long to paddle your own canoe,  
**E**xempt from your job and career,  
**R**emember that here one is safe and free,  
**S**ecure and secluded by Nature's decree.

**W**aters of famous Manitowish  
**I**nvite your presence to play and fish,  
**S**ure to gratify every wish.

El Capitan



Ahlborn Printing — Minocqua, Wisconsin

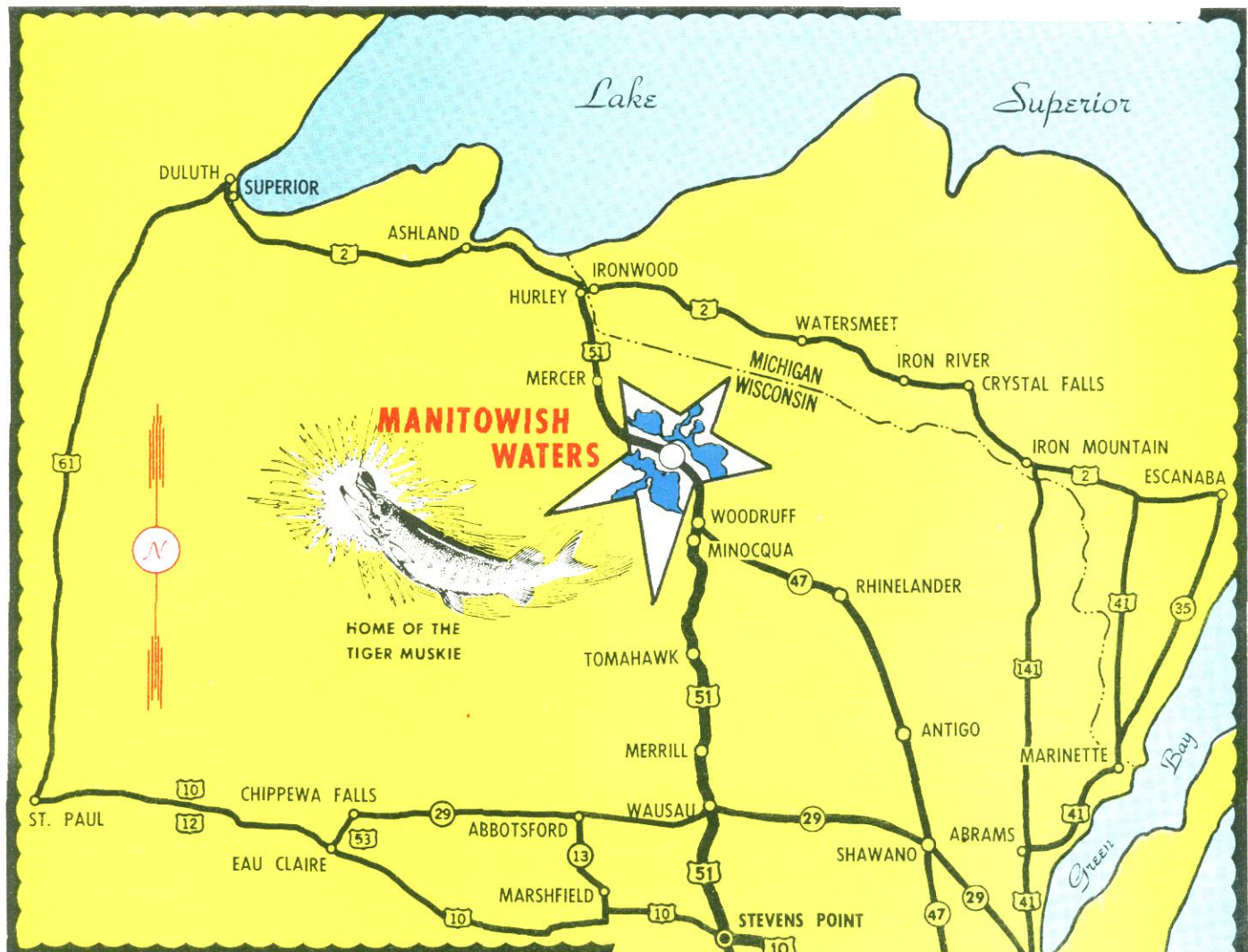






MANITOWISH WATERS CHAIN OF LAKES





## ..HOW TO REACH.. *The Manitowish Waters* A Chain of 14 Lakes

**BY AUTO** — Manitowish Waters, Wis. is on U. S. Hwy. 51, just 360 miles north of Chicago with good roads all the way. The trip from Chicago can easily be made in one day. Signs of the various resorts appear on Route 51 in the area.

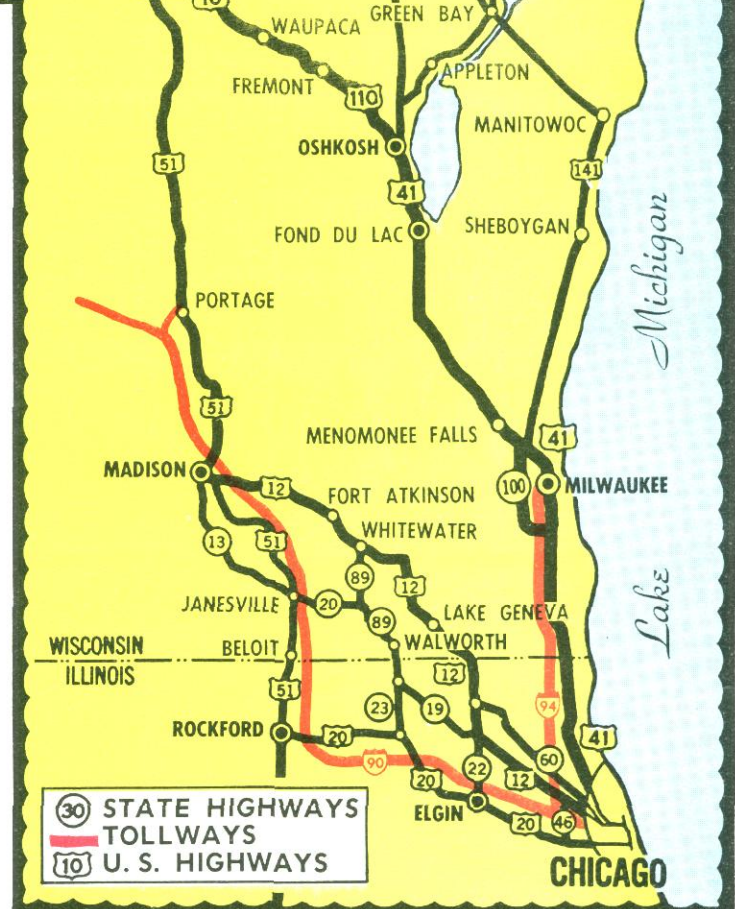
**BY TRAIN** — Take the C. & N. W. to Manitowish. Autos from the resorts will meet you by appointment.

**BY PLANE** — To Manitowish Waters airport by private or charter plane. Fly North Central Airlines to Ironwood, Mich. Your host will meet you at either airport.

**BY BUS** — The Greyhound bus line offers service direct to Manitowish Waters. Route via Milwaukee or Madison from Chicago. The scenery enroute is both interesting and beautiful. There's a little of all the world in Wisconsin.

### MILEAGE — FROM MANITOWISH WATERS, WIS. - TO:

|                  |     |                  |     |                    |     |
|------------------|-----|------------------|-----|--------------------|-----|
| Antigo, Wis.     | 90  | Monroe, Wis.     | 267 | Evansville, Ind.   | 643 |
| Appleton, Wis.   | 170 | Oshkosh, Wis.    | 188 | Fort Wayne, Ind.   | 521 |
| Beloit, Wis.     | 285 | Portage, Wis.    | 199 | Indianapolis, Ind. | 551 |
| Eau Claire, Wis. | 188 | Racine, Wis.     | 293 | Kansas City, Mo.   | 716 |
| Green Bay, Wis.  | 179 | Sheboygan, Wis.  | 243 | Louisville, Ky.    | 664 |
| Hudson, Wis.     | 249 | Waupun, Wis.     | 220 | Marion, Ind.       | 640 |
| Janesville, Wis. | 255 | Wausau, Wis.     | 89  | Minneapolis, Minn. | 269 |
| Kenosha, Wis.    | 307 | Chicago, Ill.    | 360 | Peoria, Ill.       | 433 |
| LaCrosse, Wis.   | 225 | Cincinnati, Ohio | 661 | Rockford, Ill.     | 302 |
| Madison, Wis.    | 237 | Columbus, Ohio   | 674 | St. Louis, Mo.     | 595 |
| Manitowoc, Wis.  | 215 | Davenport, Iowa  | 408 | South Bend, Ind.   | 454 |
| Marshfield, Wis. | 144 | Des Moines, Iowa | 511 | Terre Haute, Ind.  | 533 |
| Milwaukee, Wis.  | 267 | Detroit, Mich.   | 633 | Waukegan, Ill.     | 308 |
|                  |     | Dubuque, Iowa    | 333 |                    |     |



**30 STATE HIGHWAYS**  
**10 TOLLWAYS**  
**10 U. S. HIGHWAYS**

**CHICAGO**