

What's Inside

Area guide reports
Map of the month
October Specials

Slow- Slower- Slowest...



This very well explains your October newsletter, but the point I would like to get across to you is the speed at which you should be moving your bait if you want to catch walleyes consistently during the late fall period.

For several years I've noticed redbait chubs in the stomachs of the walleye I fillet at day's end and the chubs all had hook holes in their lips. It was obvious that the walleye were picking up the dead minnows that sank to the bottom, because we hadn't lost any minnows, except for the ones we would take off after catching a fish or the ones we would replace with live minnows when our bait was dead.

Another interesting point is the fact that I seem to catch more fish consistently, because my rod is laying motionless while I tie on a new hook or put a fresh minnow on for my customers. Many, many times I will pick up my rod and have a fish on, or I will see the tip move on my rod while I'm rebaiting someone else's.

After catching a fish, I now use the same minnow even if it's dead. My best catch so far was eight walleyes on one minnow, four of which were larger than 15", while my customers with their live minnow caught zip. I've even gone so far as to pinch my minnows before casting out. Guess what? My bait caught fish before the live ones.

Next time you're out, do some experimenting of your own and, although hard to believe sometimes, you may be pleasantly surprised. Just for example - the recently caught 10 1/2 pound walleye in my boat was caught on a minnow that had already produced two walleyes and it was the **slowest** moving minnow of the three we had out.

Just think of the money you can save on live bait. Maybe next year you can go to a bait shop and buy dead minnows for half price.

Good luck,

Bob

October 1992 Volume 2, Issue 7

The 16th Annual World Championship Musky Classic is History...

- 833 men and women caught 88 muskies in the three day tournament.
- All but three of the fish were released.
- Tom Swanson of Boulder Junction won the open division with a 44-inch, 23-pound, 12-ounce musky.
- Harry Nordquist of Wausau (formerly of Presque Isle) took first place in the sportsmen's division with a 42-inch, 23-pound, 4-ounce fish.
- 77 women fished the classic.
- Forty different clubs were registered.
- All seven of the tournament size (35 inch or longer) in the open division were released.
- All but three of the 68 legal size (35 inch or better) were released in the sportsmen division.
- Over 250 volunteer landing crew members were on hand to help the fishermen on and off the water and serve them coffee, doughnuts and hot soup.
- Sixteen states were represented in the classic.
- Oldest person registered was 85 and the youngest was said to be 10.
- Two dollars from each registration plus personal and club donations netted over \$3,100 toward the Ben Bendrick Scholarship Fund which is giving a \$1000 a year to each of four area students attending college. Grants of money are also given to North Lakeland Elementary School and to the four sponsoring communities for various community projects.



TOM SWANSON OF BOULDER JUNCTION
WINS THE CLASSIC OPEN DIVISION WITH
A 44-IN, 23 POUND 12 OUNCE MUSKY.

The WCMC Classic, under the direction of Ken Reinicke, our Presque Isle /Winchester Guide reporter, is held each year on the week-end following Labor Day. Ken is Community Education Director at North Lakeland Elementary School. He was the instigator of establishing the "trophies only" contest as a Community Education project in 1977 as a means of promoting the area and a method of increasing business in a normally

slow week-end after Labor Day. This contest started with 269 contestants and has grown steadily ever since. Our thanks to you, Ken, for another Job Well Done. He and his Rules Committee now begin planning for the 1993 World Championship Musky Classic.

Guips and Tips from Area Guides

MANITOWISH WATERS AREA

Bob McClellan - Guide - Newsletter Publisher
Junction Tackle and Gift
Manitowish Waters, WI 54545
715-543-2776

MANITOWISH WATERS AREA

With turn-over complete on the Manitowish Chain walleyes can sometimes be hard to find, but once found are usually quite easy to catch. Forget leeches and night crawlers for this year - minnows are the only way to go. 1/8 ounce or 1/4 ounce jigs tipped with minnows in depths of 25 to 40 feet and worked very slowly will put many a nice walleye in the pan. Floating jigs also work well with a slip sinker as long as you set the stop to keep the floating jig within a foot of the bottom.



ANGIE COURTNEY OF STEVENS POINT CAUGHT THESE 1# TO 1 3/4 # CRAPPIES WHILE FISHING ON FAWN LAKE WITH MINNOWS.

Some good choices for October are **Clear Lake** along the many sunken rock bars down the center of the lake and also the rocks along the southeast shore. In **Stone Lake** fish the deep drop off Beaumonts Island and also the rocks just off the small island on the southeast end. In **Rest Lake** you'll find walleye on the many rock bars and also the sand off Fox Island where it drops into deep water. Don't be afraid to fish down into 40 feet plus, as many times you will find the larger fish in this area. In **Spider Lake** you'll always find good walleye fishing

along the drop by the inlet from **Island**, the steep north shore and also the slot between Cook Stove Point and Breezy Point. In **Island Lake** I would concentrate my time on rock and sand bars that have 25' to 35' of water around them. Also with turn-over complete keep a check on the inlet areas of **Rice Creek** and the **Manitowish River**. These shallow areas can be dynamite toward the end of the month. October is also a great month to fish the deep rocks on **Manitowish** and **Little Star**. If you're looking for a 10 pounder plus, these are the two to try.

If you're looking for a trophy musky, October is a great month for this. I would definitely use or have someone using a jerk bait like a weighted suick or striker this time of year, as well as your deep diving crank baits such as Rizzo divers, Crane baits, Gramma baits or Bucher Depth Raiders.

This is also the time of year for large suckers; 14" and larger are not out of the question. I prefer to free float one behind the boat or if I'm in really deep water to use a weighted hook to run them down to 30' or 40' depths. It is not uncommon to catch muskies in 45' plus of water this time of year and I really feel if you're to catch a fish over 50 pounds that it will come out of very deep water.

My choice of musky lakes for October are **Dead Pike Lake**, **Manitowish Lake**, **Spider Lake**, **Rest Lake**, **Island Lake**, **Little Star Lake** or **Clear Lake**.

Good luck and Take a kid fishing.

Bob

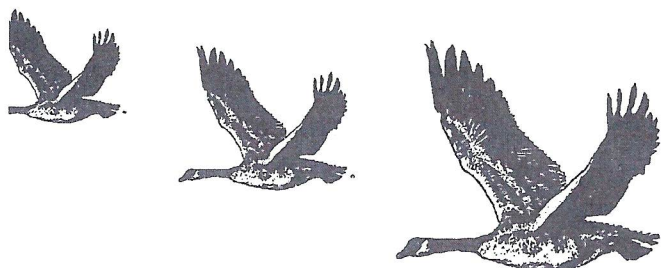


RON GAA AND KEN DEAKIN OF MANITOWISH WATERS FISHING THE FLAMBEAU FLOWAGE CAUGHT THESE 1# TO 1 3/4 # CRAPPIES ON MINNOWS.

BOULDER JUNCTION AREA**TOM SWANSON'S GUIDE SERVICE**

P.O. Box 144

Boulder Junction, WI 54512 715-385-2168



There is never quite enough time to do everything in October. You can hunt grouse, ducks, geese and deer. It's also the premier time for walleyes and trophy muskys. I guess if I had my choice, I would divide my time into two groups; rainy days and sunny days. On rainy days spend your time water fowl hunting and musky fishing and on sunny days, grouse hunting and walleye fishing.

Many musky have been suspended over deep water areas of the lake during the summer. The cool water of October brings these fish back near the shorelines and shallow bars where they are more catchable, when using traditional casting methods. Casting jerk baits or deep divers works very well during the early and late low light times of the day. During the high sun times, I like back-trolling along these same areas. These methods will work through October and into November.

Walleye fishing is about the same as in September. Use 1/8-oz or 1/4-oz jigs, medium-size chubs while fishing rocks and deep water, but plan on fishing deeper! It's not uncommon to catch walleyes 35 to 45 feet deep during the month of October. So enjoy the fall colors, be patient and make sure the bait stays on the bottom. Walleyes won't come up after it.

Where are we fishing?

High Lake

Walleye fishing has been very good in the deep rocks off Pine Point running all the way across to Forest Lodge. Orange 1/8-oz jigs and medium chubs are working the best. Orange jigs seem to produce more fish in all the lakes that have large populations of crayfish.

White Sand Lake

Walleye fishing here has been great! One quarter-oz jigs and chubs are working best at depths of 35

to 50 feet. Most of the deep rock structures can be found in the east half of the lake. Musky fishing has only been fair, with some action taking place along the south shore from the boat landing to the first dock to the west.

Trout Lake

Perch fishing has been at its best. Large fish (12 to 13 inches) are biting on the deep weed edges at 20 to 25 feet. Slip bobbers and medium-size minnows seem to be working best. Musky action on Trout Lake has also been good. Most fish are being seen along the very deep shoreline drop-offs. Remember, this lake has a 45-inch size limit.

Big Lake

Big has been turning up good numbers of walleyes in the rocks from Keith's Island down through the middle of the lake to Kego Lodge. There has also been some good catches in the rocks out in front of the outlet to **Rice Creek**.

Remember. . . Whatever the season. . . Practice catch and release all year 'round.

Tom

One of the most effective ways to learn about a lake or to learn different fishing techniques is to hire a guide.

Make your reservations for next year . . . **NOW.**

"PLEASE. . . PLEASE. . . PLEASE. Keep your trash. Don't discard old fishing line or other debris into the water or on the grounds around it."



K C Marini of Lowpt, IL with a 7# 25 1/4 " walleye caught with a jig and minnow on the Manitowish Waters Chain.

LAC DU FLAMBEAU AREA

By Bob McClellan

Fishing in the Lac du Flambeau area is superb and good numbers of walleyes are being caught on 1/8 and 1/4-ounce jigs tipped with medium red-tail chubs in 25' to 65' of water. Musky also have been quite active as well as smallmouth bass and jumbo perch.

Just remember, if you're coming from the Manitowish Waters or the Boulder Junction area to use an alternate route, as Highway H is closed at the Trout River bridge until mid November. Use highway 47 out of Woodruff, or if closer use the Powell Road, by the phone company, off Highway 51 in Manitowish Waters to Highway 47.

WALLEYE

Walleye fishing is great and will continue in October. **Little Trout** has been super, but don't be afraid to fish down to 75' or 80'. Most of my fish have been 39' to 63' deep. I've seen a lot of fish on the locator at 65' to 75', but I didn't have any 3/8-ounce jigs. The deepest was a 10 1/2 pounder at 63'. **White Sand** has also been super, but the fish are at 25' and later in the day they are down around 30' to 35'. Rocks and sand are the key to catching these. **Pokegama, Flambeau, Long Interlocken, Crawling Stone, and Fence** are all good choices in October also. Glow jigs or phosphorescent jigs have been working super in these deeper depths.



A GOOD DAY WAS HAD BY BOB, MIKE AND PETER AS THEY FOUND THEIR LIMIT WITH JIG AND MINNOW COMBINATION.



THIS WILL BE A SUPER FISH FRY SAY BILL AND JIM.

MUSKY

Suckers have been working well, but also try your deep diving crank baits and also your weighted jerk baits. The largest fish caught in recent days was a 33 pounder out of **Little Trout**. This fish was caught on the steep break just off the weed line on the northwest side. I've personally caught seven musky fishing walleye in 40' to 60' of water on **Little Trout** using a jig and minnow and have had four walleyes hit by musky in excess of 40'. If you're looking for some great musky fishing, I would recommend trying **White Sand Lake, Pokegama Lake, Upper & Middle Sugarbush, Long Interlocken, Crawling Stone, Fence** or **Little Trout**.

BASS

Smallmouth have been hitting jigs and minnows in 25' to 40' of water on **Little Trout** and **Fence Lakes**. This will continue until ice up. Most fish are in the 2 to 3 1/2 pound range and are really fun to catch. Due to our super cold spring, though, I would highly recommend catch and release.

PANFISH

Jumbo perch have been hitting occasionally on **White Sand** and **Pokegama**. Most of these fish are being caught by walleye fishermen, but if you wanted to have a nice catch of jumbos, this is the time of year. Fat-head minnows on a 1/8 ounce jig works best.

Good Luck,

Bob

Presque Isle - Winchester

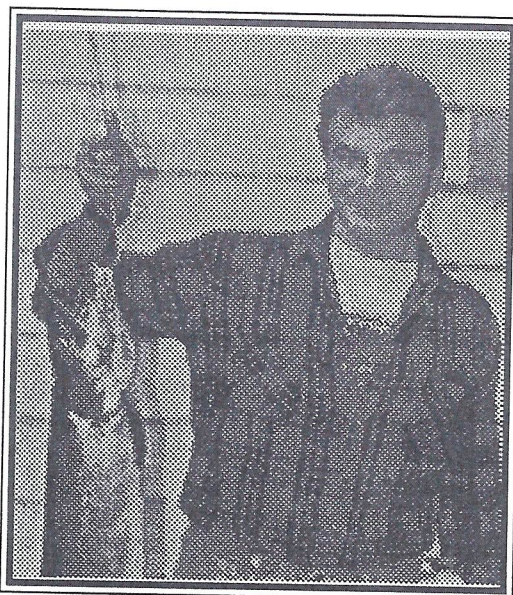
Ken Reinicke

HC1 Box 373

Presque Isle, WI 54557 715-686-2033

Those "steady" fall patterns!

After a summer of inconsistent fishing patterns every guide in the area has to be happy about those "steady" fall fishing patterns. Deep water most of the time, redbtail chubs on sixteenth-ounce fluorescent green or orange jigs, and four pound test line.



WHAT A THRILL THAT FIRST MUSKY IS!

Fish the deep edge of the drop-off rockbars, (usually 22 to 38 feet), where the relatively flat bottom begins. Sometimes they're a little more shallow, sometimes a little deeper, BUT THEY WILL BE THERE.

Try to find the "spot on the spot". Find the in-

side corner of a rockbar, or the deep "end" of a "finger" bar where it meets the bottom. Fish slowly and keep your line tight. Sometimes you can "bang 'em" as soon as you feel the "take", but usually you have to let them turn the minnow. When the pressure is steady set the hook and SET IT GOOD! A lot of lunkers "shake off" next to the boat because the hook isn't set properly. Remember how everyone always lets the big ones get away? That's why!

This method will work on several lakes in the Presque Isle/ Winchester area from now until "ice up". **Harris, Presque Isle, Crab, Papoose and North Turtle** are absolutely "prime" for this type of fishing at this time of year.

Time of day seems to mean little although fishing a particular spot first is always most beneficial. Windy days may find the walleyes shallow and even on top of bars that have 12 to 16 feet of water on top. Check it out. Sometimes you can find your "spot on the spot" and limit out in an hour.

Be sure to let that anchor down gingerly so you

don't spook fish that you may be right on top of. You're better off if you don't have to drop the anchor but, as a guide, I find that many clients can not distinguish a "pick up" if the boat is moving. Anchor according to the wind. If the deep section is on the "lee" side of the bar, anchor on the shallowest part of the bar and let anchor rope out until you can reach "the edge". If the wind is blowing to the bar anchor deeper than your fishing spot and let out enough rope so you sit right on the deep edge. Then work the jigs very slowly, maybe even let them sit. If the walleyes are there they'll find them.

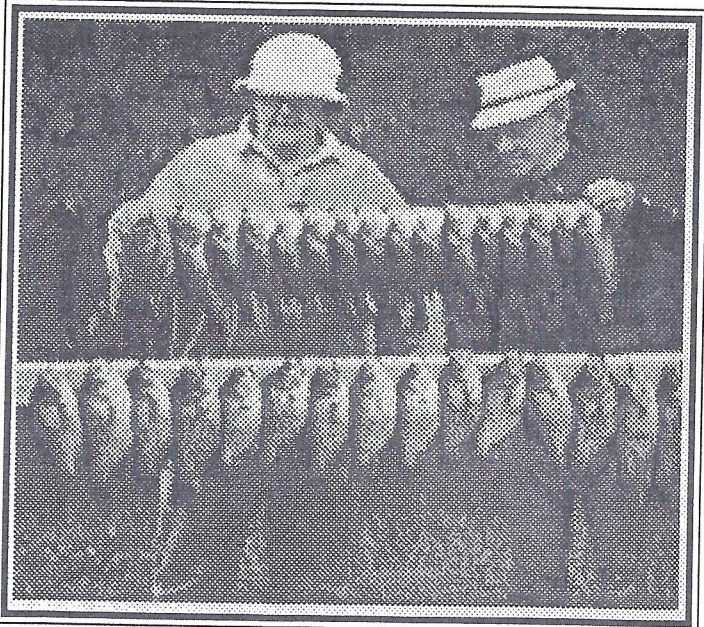
Smallmouth Bass in **Katinka, Carlin, and Crab** will hit on the same outfits and methods used for walleyes. Remember - for big fish, this is BIG minnow time.

The Muskies are moving on all the lakes right now! Try Bobbie Baits, Suicks, and Bucktails on **Birch** and **Round** for the best chance to catch a legal Musky. For the "hawgs", throw suckers on **Presque Isle, Papoose, Crab, Big, and Harris**. All these lakes have the potential for a forty pounder! Maybe more!

Try the deep edges of the rockbars, submerged humps, and even "open" water where the Ciscoes and Whitefish school and suspend.

One of my favorite methods is using a half-ounce jig and bottom-bouncing the sucker along a 25 to 45 foot deep bar. I'm convinced that I WILL catch that "fish of a lifetime" if I just keep doing it. If YOU have the patience, DO IT, TOO. Then call me when you get "your fish". And both of us can be thankful for those "steady" fall patterns.

KEN



"HIRE A GUIDE. . . . THE ONLY WAY TO GO," SAY A HUSBAND AND WIFE DUO AFTER SPENDING A DAY ON THE FLAMBEAU FLOWAGE. WE COULDN'T HAVE DONE IT WITHOUT HIM."

Specials of the Month
(for Newsletter subscribers only)
PRICES GOOD TIL 11/30/92



**ALL BAIT AND LURES
IN STOCK
20% OFF**



THE JUNCTION NEWSLETTER

- THE ONLY NEWSLETTER DEDICATED TO SERVING FISHERMEN EXCLUSIVELY IN AND ABOUT OUR AREA.
- PUBLISHED MONTHLY APRIL - DECEMBER
- FISHING REPORTS AND ARTICLES FURNISHED BY THIS AREA'S FINEST PROFESSIONAL GUIDES.
- FEATURED LAKE OF OUR AREA EVERY MONTH
- SAVINGS ON MONTHLY SPECIALS TO SUBSCRIBERS ONLY.

1 YEAR SUBSCRIPTION \$39.00 2 YEARS \$70.00

~~~~~  
The Junction Newsletter is printed by Presto Prints at  
607 Washington Street - Wausau, WI. 715-842-2226



CHARGE ORDERS WELCOME! Visa \_\_\_\_\_ MasterCard \_\_\_\_\_

CARD NUMBER \_\_\_\_\_ Exp Date \_\_\_\_\_

NAME \_\_\_\_\_

ADDRESS \_\_\_\_\_

CITY \_\_\_\_\_ STATE \_\_\_\_\_ ZIP \_\_\_\_\_



#### NOVEMBER STORE HOURS

DAILY 7:00 AM - 5:00 PM  
SUNDAY 7:00 - 3:00 PM

The Junction  
HC2 Box 228A  
Manitowish Waters, WI 54545

Call 715-543-2776 or 543-2359





# THE JUNCTION NEWSLETTER

HC 2 Box 228A  
Manitowish Waters, WI 54445



0061  
JAMES BOKERN  
1226 E 20TH ST  
MARSHFIELD WI 54449

4/93

Address correction requested

**September Song.** . . How long has it been since the time when . . . good grief - the sun's almost up. Fall's upon us and it won't be long before I won't be able to get the canoe into the water. Maybe if it's a good day, I'll sneak up to one of the creeks and paddle about a bit. Might as well take the dog along, too - she really enjoys just minding the bow and doesn't spook the ducks. And then she sleeps better at night, too, after all that fresh air and sunshine.

Yup, it's going to be a beautiful day. Prime time for color might just be today and tomorrow - better go today 'cause it might just rain tomorrow, though! Even the dog seems to be telling me, "This is the day, Bozo, let's get going!" So, with a cooler full of emergency rations for the dog and me, off we go - oops, might just as well take the ultra-light gear along - who knows, maybe the fish are looking for it to be a fun-packed day, too! And, one more shore lunch would sure be nice - it's going to be a long winter!

Sure smells good this time of year - the sweet fern and even the musty but pleasantly pungent odor emanating from the floor of the trail excite the nostrils and take the mind off the ever-increasing burden of packing a canoe until, "There it is - great, nobody's been in here for awhile."

Paddling upstream and searching for some of the good old fishing spots, one's mind wanders off to things of the past until soon the canoe suddenly stops - you've run into a newly-created beaver dam, fool! No problem, just walk the

gear over it and head on upstream where there are some new deep holes, thanks to the beaver.

The morning sun is now in full regalia and it's time to shed one layer of clothing and flip a lure at an intriguing bit of water - should be something lying under that log sticking out in the current up ahead. Sure enough, the spinner (no garden hackle for us, right?) is snapped up immediately and you've boated your first fat magnificently-colored nine-inch brookie. Her majesty, lying comfortably up in the bow, seems to approve of the goings on and

appears to transmit the thought that, "Yup, we've got enough for lunch!" and nods off back to sleep knowing full well that the first fish may very well be the last for the day. However, it isn't long until another several trout have been hooked, played and released for a different time, perhaps next spring.

Having had a most successful morning and enjoyed a fantastic shore lunch of pan-fried brook trout, potatoes and onions and baked beans over an open fire, it's time to take a short snooze in the sun before getting back to the canoeing.

"Oof - it's getting cold!" Not really, old boy, the sun's moved

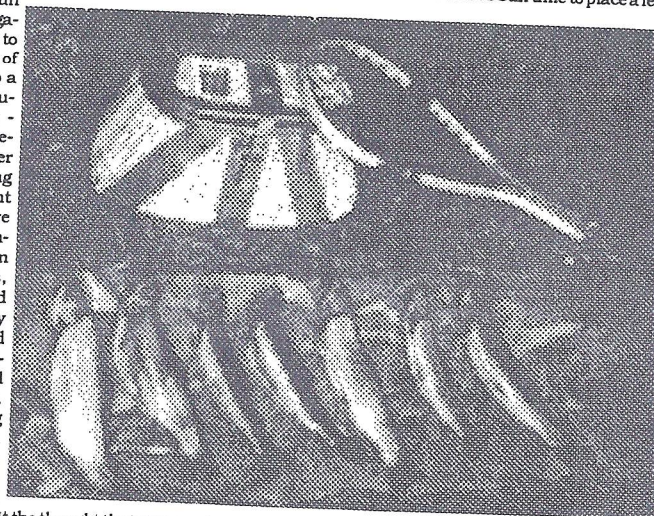
quite a little since you sacked out and you're now huddled up in the shade! The short snooze stretched into one longer than usual but there's still time to place a few trout in the creel and

take them home for supper. And, sure enough, a limit was taken quite easily and it will provide the family with fine dining this evening. If a person could just "can" up a bunch of fresh air to take home, too!

Oh well, it's fun to dream, right? But, this isn't dreaming - we spent an entire day on a stream and never saw another soul during the eight hours of paddling, fishing and eating and just plain enjoying the "aloneness"! When was this?

Ten years ago? Twenty? Why, just about a month ago! There is still lots of country to enjoy and, if you're willing to search them out, waters which contain beautiful brookies. And, as a bonus, the exercise isn't all that bad, either - a fantastic way to get tired and enjoy it!

Since the colors cannot possibly improve on what they are right now, maybe we'll just have to sneak back in there one more time and "fish" with the camera - do need some exercise! And, it's still trout season, come to think of it! Hey, Dog, what do you say - wanna go canoeing?"



The "Junction Newsletter" is published by Junction Tackle and Gifts, Manitowish Waters, WI 54445, 715-543-2776, during the months from April through December, inclusively. The use of excerpts or reproduction of all or parts of this material is strictly prohibited. Annual subscription rate is \$39.  
POSTMASTER: Send address corrections to Junction Tackle and Gifts  
HC 2 Box 228A  
Manitowish Waters, WI 54445  
Copyright © 1992