

Well, How Did You Like It?

I would like to take this opportunity to say thank you for spending the year with us. Our first year of the **Junction Newsletter** comes to an end. I hope that you enjoyed reading the Guides' reports of monthly fishing know-how, the timely fishing articles and the Map of the Month.

I look forward to serving you in 1992.

Your next issue of the **Junction Newsletter** will arrive in April if you took a two year subscription.

Keep in mind that you won't receive another copy of the **Junction Newsletter** unless you subscribe.

May the highlights

Of the old year

Be but flickers in the dark

When compared with

What the New Year

Will enhance with its spark.

**Merry Christmas
and a
Very Happy New
Year
from all of us at
the Junction!**



TAKE A KID "ICE FISHING"!

Winter is here and for a lot of us the most exciting thing happening is when the Green Bay Packers find another way to lose a game of football. Instead of sitting home bored, why not take the kids or grand-kids and head out on the frozen waters of our area and have the time of your lives, one the kids will never forget.

The basic equipment you'll need consists only of a five-gallon pail, a few jig poles, a couple of small ice jigs, a box or two of wax worms or spikes and a chisel or ice drill to make some holes in the ice. Total cost is less than \$20, unless you already own a chisel, then you won't have to spend even \$10 for a day you'll never forget, or at least, the kids never will. Even better yet, why not borrow a chisel and a couple of jig poles and give it a try! You may really like it and I'm sure the kids will! It's always a good idea to give each child a five-gallon pail to take along. Pails make great seats and are indispensable for carrying extra gloves, snacks, etc. and carrying all the fish home that you are going to catch.

Getting kids hooked on fishing is a real problem today and not nearly as easy as it was when we were kids. With Mom and Dad both working, there never seems to be enough time in the day to do the things we used to do as a family. By taking the time now to teach kids how to fish, you can give them an activity that is not only fun, but also very rewarding.

One of the best things you can do when taking your kids fishing is to leave your own poles at home and bring a lot of love and understanding. I guarantee that they'll keep you busy with questions about depth, fish type, lure type or color etc.. Also, don't forget the cookies and hot chocolate!

Remember, if the fishing is slow or even if it's super, the attention span of most kids isn't any longer than it is at home or at school. Kids don't like anything that lasts all day and if you want to turn them off, just keep fishing and I guarantee you'll lose a fishing partner for life.

So, get the kids and bring all your patience as you head to your favorite lake for a lifetime of memories you'll never forget.

Good luck and welcome to our new fisher people,

NEWSLETTER

J
U
N
C
T
I
O
N

≈ ≈ MANITOWISH WATERS ≈ ≈

Bob McClellan - Guide - Newsletter Publisher
Junction Tackle and Gift
Manitowish Waters, WI 54545
715-543-2776

Our normal two to three weeks of open water fishing in November were short lived on the Manitowish Chain. **Alder Lake** and **Wild Rice** were the first to freeze and ice fisherman had their tip-ups in by the 8th of November. **Clear** and **Island** followed a couple of days later. Some nice catches of walleye were caught in the weeds on the north end of **Clear** and also by the inlet of the **Manitowish River** on **Island**.

Musky fishermen were able to fish **Manitowish**, **Spider** and **Little Star** until the ice blocked the landing at Greer's the middle of the month. Several musky over 20# were registered, but the majority, all of which were caught on live suckers, were under 20# and released.

Warm weather and heavy snow put an end to all fishing for almost a week, until the next blast of arctic air hit the area the end of the month.

If you like to ice fish, the **Manitowish Chain** is always a good producer for walleye, northern, panfish and cisco.

Wild Rice Lake is a popular ice fishing lake, which is easily accessible at the boat landing at the end of south Townline Road. Fish the outside weedline by the inlet and outlet areas and also the weedline by the center bar (see this month's map). A good lake for walleye, northern and panfish action.

Alder Lake is an excellent producer of walleye, perch and an occasional northern. Fish the weed edges off the north shore and also the two weed bars just off the north shore. The center rock bars are also good walleye spots. **Alder Lake** is accessible over state land, off Park Road, on the north end of the lake.

Clear Lake is easily accessible at the boat landing off Clear Lake Road on the south end, and over state land off Hasking Road on the north end. This is an excellent lake for walleye, northern and panfish. Fish the weed edges or any of the center rock bars.

Fawn Lake is a good choice if you're looking for crappie and bluegills. It is also a fair lake for northern and an occasional nice walleye. This lake is accessible over state land on the north end, just down from the **Clear Lake** boat landing.

Stone Lake offers northern, walleye and panfish action, but is rather difficult to get on. Access over state land is possible on the north side or on the southwest end.

Spider Lake is accessible by Greer's Pier, but watch for thin ice, due to the current flow under the 51 bridge. This is a fair walleye producer by the rock bar out from Greer's.

Little Star is accessible through the State Park Beach area on the east end. If you're looking for a trophy walleye, try the center rock bars. This is also an excellent area to jig for ciscos with a number 6 Swedish pimple.

Rest Lake is accessible at the boat landing on the northwest end and at Koller Park in town. This is an excellent winter walleye lake. Fish the rock points or try the stumps out from the inlet of the **Manitowish River** or the stumps on the north end.

Manitowish Lake offers good walleye fishing by the inlet area from **Alder** and also on the many rock bars. The deep water just off the many rock bars is also an excellent area for cisco. The problem is access, as all property is private. Ask before you **TRESPASS!**

Island Lake produces a lot of nice walleye by the inlet areas of **Rice Creek** on the north end and by the **Manitowish River** inlet area on the south end. Access is possible, but very difficult, over state land at the end of NorthTownline Road. All other land is private so again, ask before you **TRESPASS!**

Dead Pike Lake is accessible at the boat landing on the east end and over state land on the south end off Powell Road. This is a good walleye and northern lake.

Good Ice Fishing.

Bob

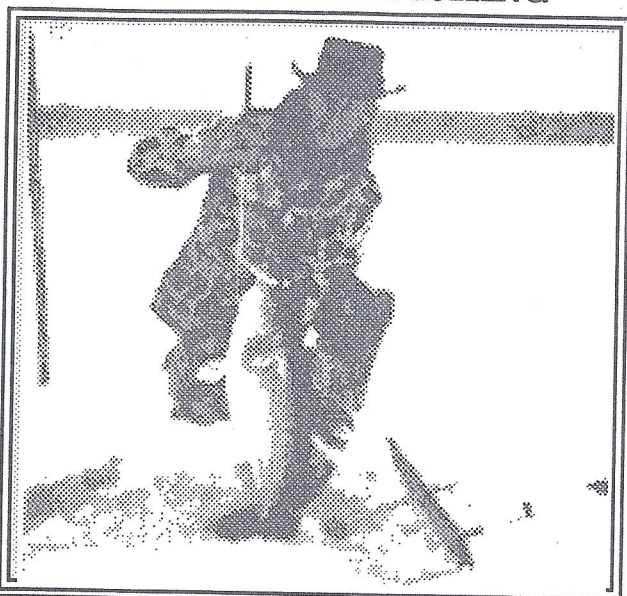


Just before the early, big freeze.

Let's Go Fishing

with area guides

DECEMBER FISHING



PRESQUE ISLE - WINCHESTER AREA

Ken Reinicke

HC1 Box 37

Presque Isle, WI 54557 715-686-2033

Ice-up means Smorgasbord in Presque Isle

As soon as the ice is thick enough to support their weight the "in the know" ice fishermen of Presque Isle and Winchester load up their tip-ups and head for their favorite channel mouths and shallow rock bars. Their catch is as varied as the number of lakes they fish. Listen to this!

Walleye on Presque Isle. Try the channel mouth out of **Averill** first, then the rock bar on the south side of the landing at the park. These are trophy spots so make sure your line is fresh!

Walleyes on North Turtle. The culvert will produce some real lunkers, but watch that current! That ice is dangerous! Also try the long bar off the south island, lots of fish there.

Walleyes on Harris. Try the weeds by the bullrushes on the north side off the landing, and then the bar off the point by the AAL resort.

Smallmouth on Katinka. You can walk down to the lake through the woods at the proposed landing. Then head for the first island on the north and fish the bar that swings south off from it. Also try the bar between the points on the south end. Mighty "heavy" structure in that area. One other spot where you'll find Walleyes is

the bar south of the point on the north end where the lake "swings" east.

Smallmouth and Rainbow Trout on Anne. The Smallmouth are everywhere but the bigger ones will be on the bar that crosses the lake east-west just north of the center. Fish the deep edges for the bigger fish. The Trout will be in the deeper water, and they are in beautiful shape.

Crappies and Bluegills on Van Vliet. The weedbed on the north end just before you go into **Averill** is the best spot. But there are weedbeds in every bay that will also produce. The great thing about fishing on **Van Vliet** is that you might pull up a Walleye or Largemouth Bass or Northern using the same baits.

Northerns on Stateline and Little Presque Isle. You need to find the edges of the weedbeds where the dropoff starts to have good success, but it's worth the effort. The bigger Northern come out of the deep water after "ice-up", and there are some good ones. The Largemouth Bass add more potential for your trip there. Take a kid along because he'll have a lot of action.

Everything on **Papoose.** This is one of my favorite lakes. **Papoose** has Walleye, Smallmouth, Rainbow Trout, Cisco, Whitefish and Northerns for the ice fisherman. Northerns in the "inkpot" on the far north end, Walleyes on the edges of the rocks off the islands by the landing and off the big point in the center of the lake. Whitefish on the bar that runs north off the big island by the landing, Smallmouth in the bay on the extreme west side and the Trout are deep off the edge that runs parallel to the islands by the landing; 60 to 65 feet deep for those critters.

Man o'live, do I wish I had time to try all of the other "great" lakes; Walleyes on **Big**, Smallmouth on **Crab**, Largemouth on **Carlin**, Crappies on **Rainbow**, **Tamarack** and **Round**, and on and on and on.

Ken

When ice fishing you should lift your tip-ups at least once every 30 minutes to check your bait and make sure it didn't get tangled in the weeds and also that you still have a minnow. This also helps to trigger strikes a lot of times.

Season's Greetings

~ ~ ~ **BOULDER JUNCTION AREA** ~ ~ ~

TOM SWANSON'S GUIDE SERVICE

P O Box 144

Boulder Junction, WI 54512 715-385-2168

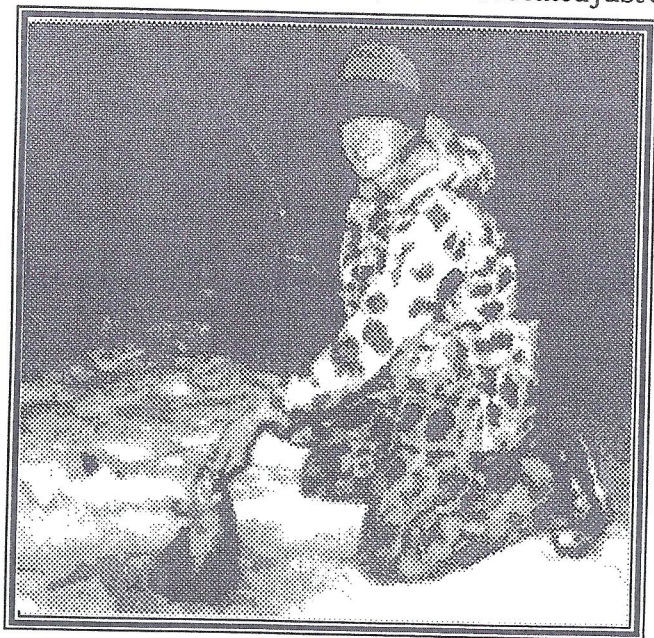
A good practice when ice fishing is to always fish with a friend and never alone. Carry about 35' of 1/4" rope with you - It could save your life or that of a friend.

With early ice on a lot of the lakes in our area, we were fortunate to have lakes like **White Sand** and **Big Trout Lake**, which stayed open for a couple of extra weeks of exciting but cool musky fishing. With musky season closed until next May, everyone is turning to walleye, northern and panfish and Boulder Junction area has a lot of excellent ice fishing lakes.

Big Muskellunge Lake is a popular ice fishing lake, which is very easily accessible at the boat landing on the southwest corner of the lake just off Highway N. Excellent walleye fishing in the weeds just out from the landing. This is also a good lake for some northern action, although most run small. A good lake for perch and bluegills also.

Little John Lake is another popular ice fishing lake with easy access at the boat landing, located just off Muskellunge Lake Road and east of Highway M. There is good walleye and northern fishing plus lots of bluegill, perch and pumpkinseed.

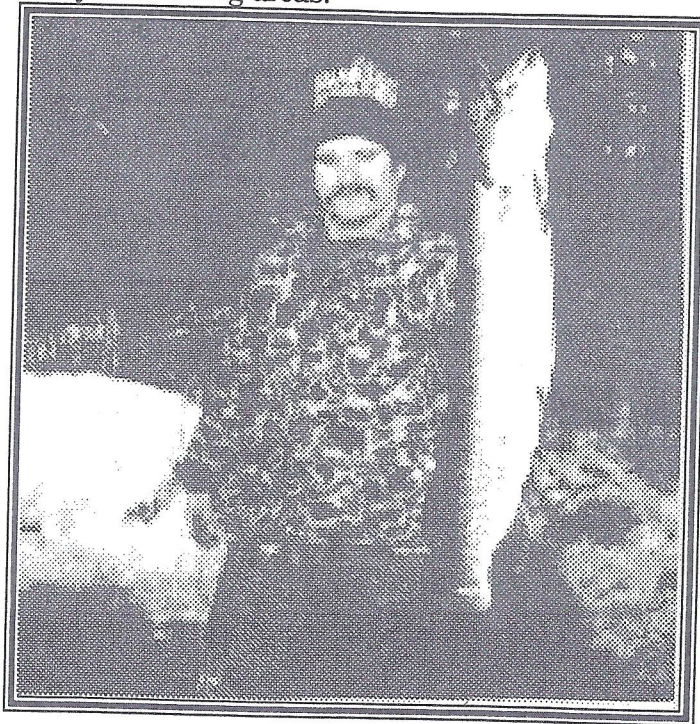
Allequash Lake is one of the heaviest fished lakes in our area by winter ice fishermen. Easy access by the boat landing between the two lakes, which is located just east



of Highway M by the **Big Trout** look-out. Excellent bluegill (6" to 9") and also nice crappies. Excellent walleye fishing and lots of northern.

Round Lake and **Little Crooked Lake** are sometimes considered out of the way lakes, but both are accessible for winter ice fishing at their respective boat landings off Bear Lake Road. Both lakes have nice 2# to 3# walleye and excellent crappie fishing and an occasional northern.

Big Lake which is located just north of Highway K and east of Highway P is easily accessible at the campground off Highway P on the northwest end, or at the public landing off highway K in the south bay. This lake supports excellent walleye and crappie fishing and fair bluegill and northern. There are lots of good weed beds and rock bars. A lake map will help to show you the many fine fishing areas.



One of our most premier lakes is **Big Trout** which has winter access at the landing on the north end just off Highway M and all along lakeshore drive on the east side of **South Trout**. Excellent walleye and northern fishing on the many rock and weed beds. Also a great lake to jig for cisco and whitefish. This lake also has a fair population of lake trout, but we'll have to wait and see if the season will open this year in January. (Check the new trout regulations in mid-December.)

If you're looking for northern try **Mann Lake**, **Whitney Lake**, **Fishtrap Lake** or **High Lake**. Some other good walleye lakes for winter ice fishing are **Escanaba**, **High**, **Fishtrap**, **Wildcat**, and **White Sand** lakes.

And remember, for quality fishing, whatever the season, practice **catch and release** all year 'round.

Tom

~ ~ ~ **Mercer Area** ~ ~ ~

Phill Graser - Guide

PO Box 99

Mercer, WI 54547 715-476-3570

Fisherman who came North towing boats the second week-end of November to fish the Flambeau Flowage were in for a big surprise. Three to four inches of ice put an abrupt end to open water fishing.

Ice fishermen didn't waste any time getting their tip-ups out and heading to fishermen's landing on the **Flambeau Flowage** where the flats to the left give up some of the nicest catches of two- and three-pound walleyes of the season. Shiners or fat-heads suspended on tip-ups in 5' to 10' of water produced nice walleyes just before dark.

The **Flambeau Flowage** is a great body of water and produces some of the finest ice fishing in our area for northern, crappie, jumbo perch and walleye. As the ice thickens a snowmobile is a real asset to reach many of the areas where ice fishing is popular.

Echo Lake located in the Town of Mercer is a popular ice fishing lake for 12" to 14" crappie and fair jumbo perch. Excellent walleye fishing, but mostly small with an occasional 18" to 22" fish. Easily accessible off the landing on the south end off Kichak's Landing Road.

Mercer Lake located in town Mercer is an excellent lake for 8" to 10" crappie, and 4# to 7# northern. A sleeper lake for 18" to 24" walleye. An easy lake to fish, with lots of productive weed lines. Accessible on the west side at the boat landing, at the end of Lakeview Ave..

Grand Portage or Tank Lake is an excellent crappie and bluegill lake located also in the town of Mercer. Access at the boat landing just off Ball Street. This lake also has some good walleye, 16" to 20", and some fair northern pike fishing. Fish your weed edges and the sand bar in the south basin.

Cedar Lake, located north of Highway J, take Cedar Lake Circle Road to a marked boat landing on the southeast corner of the lake. Good 8" to 12" crappie and excellent 6" to 8" bluegill, plus occasional 15" to 20" walleye and 18" to 25" northern. One of the best ice fishing areas are the weeds out from the inlet of the Turtle River on the east end.

Fisher Lake, which has a boat landing off east Fisher Lake Road, is a good lake for 8" to 11" crappie, 16" to 24" walleye and 18" to 25" northern. It also has good populations of desirable-sized perch and bluegill. This lake has lots of weed lines and drowned wood.

Pike Lake which is located north of Mercer, just west of Highway 51, and is the deepest lake in our area at 80',

can best be described as a sleeper lake. A trophy walleye and smallmouth bass lake. Good northern fishing (28" to 38"). Good jumbo perch and nice-sized crappie.

If you're looking for family fun, try panfishing on **Wilson Lake**, which is located about four miles south of FF on Popko Circle Road. Lots of bluegills 4" to 8". Also available are perch, pumpkinseed, rock bass, crappie and an occasional northern or walleye.

Until next spring - enjoy the peacefulness of winter and all of its beauty.

"Keep Moving & Keep Choppin",

Phill

Wall Hanger Walleye

by Bob McClellan

What's the best time of year and which lake would you fish for a trophy walleye?

If you're looking for big fish, there is really no other time than now for a truly heavy walleye, usually loaded with spawn. Fish that weigh 10 pounds in September, probably weigh 11 1/2 to 12 pounds now. The most productive time to ice fish is 6 AM to 9 AM and 3 PM to 6 PM, the two low-light periods when walleye usually move shallower to feed.

As far as which lake, there are many in our area, but I would choose one that has trophy potential like Alder, Manitowish, Rest and Island in Manitowish Waters; High, Big and Big Trout in Boulder Junction; Fence, White Sand and Little Trout in Lac du Flambeau; Harris in Winchester; Presque Isle Lake in Presque Isle and Flambeau Flowage in the Mercer area, just to name a few.

Outside weed edges in 10' to 14' of water, rock and sand bars at 10' to 20' and also stump and drowned wood areas in 4' to 10' of water have always been my most productive areas. Basically, you will find these walleye in the same type of structure that you found them in during the summer, except for weed beds that die.

Take into consideration the noise factor. Walleye are easily spooked and may be driven from the area by excessive noise.

If you're looking for that WALL HANGER or possible state record walleye, then I highly recommend that you get out on the ice and give it your best shot.

Prime fishing spots are always near river inlets and outlets, but these spots are also prime areas for thin ice - even in the coldest of weather. Also avoid dark-colored patches where the snow looks discolored, as this also signals either a crack in the ice or thin ice!

~ ~ ~ LAC DU FLAMBEAU AREA ~ ~ ~

John Beda-Guide

3425 Hwy 47

Lac Du Flambeau, WI 54548 715-588-9150

November fishing in the Lac Du Flambeau area was short lived as cold weather and northwest winds put an end to most open water fishing early in November. Landings got blocked with ice and even though the lakes were open, fishermen were unable to reach open water. As winter moves into the north woods the Lac Du Flambeau area offers some excellent ice fishing for walleye, northern and panfish in the next few months ahead.

If you're looking for walleye I would recommend fishing early morning (6 to 9 A.M.) and then again in the afternoon from (3 to 6 P.M.). At these times I would fish either shallow rocks or weeds and weed edges from 4' to 10' of water. Some good lakes to fish in the Lac Du Flambeau area are **Pokegama Lake, Fence Lake, Plummer Lake, Stearns Lake, Flambeau Lake, Fat Lake and White Sand Lake**. If you're going to fish from 9 A.M. To 3 P.M. I'd recommend fishing water from 10' to 25' or even 30' for daytime walleye.

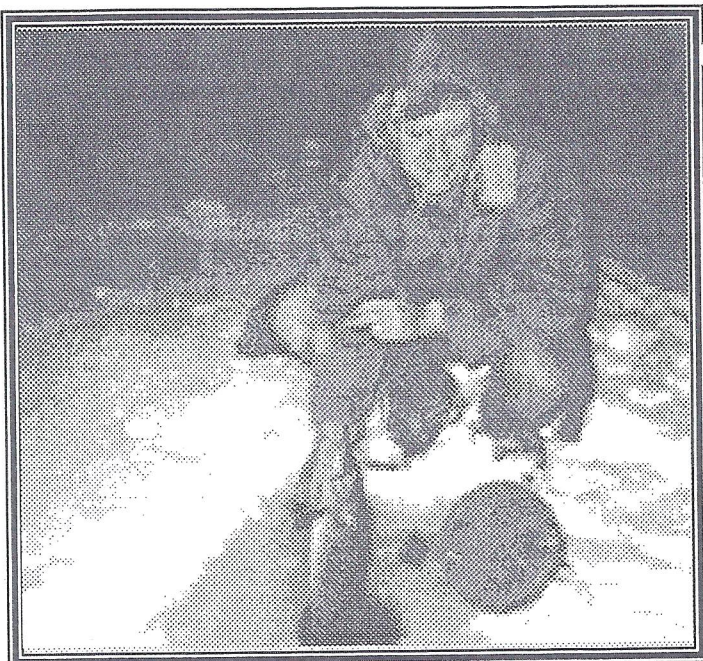
If you're looking for northerns, you can't beat the action you'll find fishing the weed beds in **Pokegama Lake, Flambeau Lake, Long Lake, Crawling Stone Lake, Fence Lake, Shisebogama Lake and Gunlock Lake**. Use large golden shiners suspended about 10" from the bottom in the cabbage weed beds. Whether you use \$3 tip-ups or \$20 tip-ups really makes no difference, but if you want to put more northerns on the ice, use a 12" to 18" leader between your line and the hook.

If you like fish for the pan, like jumbo perch, bluegills, crappie and pumpkinseed, you should try **Pokegama Lake, White Sand Lake, Buckskin Lake, Shisebogama Lake, Pike Lake, Moss Lake, Mitten Lake, or Gunlock Lake**. A couple of jig poles and an assortment of small ice spoons, like rat finkies, rockers, dots, etc., plus a box of wax worms, spikes, meal worms, golden rod grubs or wigglers is all you need to catch a pail full of fish for the pan. Oh yes, don't forget a chisel or drill to get through the hard water.

John Beda

TIP OF THE MONTH

Always remember that ice is never 100% safe. Always check ice thickness before venturing out. You can never be too cautious when ice fishing. Just because someone went out ahead of you doesn't mean it's safe — They may have weakened the ice and it could be your turn for an unforgettable dip.



HARD WATER FISHING ACTION

IT'S ICE TIME IN THE JUNCTION TACKLE AREA

The Vilas County Ice Fishing Hot Line is 715-479-3649.

For local information call Bob at 7715-543-2776, The JUNCTION TACKLE AND GIFT or Don Pemble at Mercer 715-476-2718.



***Notes from Fish Management Report #144 Released Fall 1989(Walleye Angling in the ceded territory,WI. 1980-87) Anglers harvested 672,303 walleye annually but caught 955,900 walleye, indicating that 30% of all walleye caught were released. Ice fishing accounted for only 13%.

Specials of the Month

PRICES GOOD TIL 12/31/91

All Rods

St Croix Zebco
 Silstar Garcia
 Daiwa Berkley

SAVE 20%**All Reels**

Johnson Zebco
 Shimano Daiwa
 Silstar Garcia

SAVE 10%**Polarized
Sports Sunglasses****40% OFF****Entire Inventory****Panfish - Walleye or Musky Lures****25% OFF****Need a Stocking Stuffer?****Why not a subscription to
The Junction Newsletter?****Forget Someone?**

CHARGE ORDERS WELCOME! Visa _____ MasterCard _____

CARD NUMBER _____ Exp Date _____

NAME _____

ADDRESS _____

CITY _____ STATE _____ ZIP _____

**REGULAR STORE HOURS
9AM - 3 PM****SUNDAY 9 AM - 1PM**

Call 715-543-2776 or 543-2359

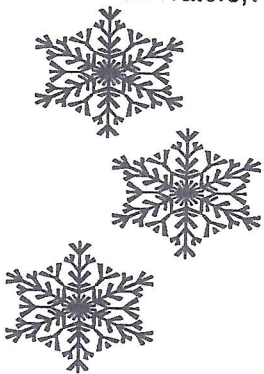
The Junction
HC2 Box 228A

Manitowish Waters, WI 54545



**THE JUNCTION
NEWSLETTER**

HC 2 Box 228A
Manitowish Waters, WI 54545



0061
JAMES BOKERN
1226 E 20TH ST
MARSHFIELD WI 54449

4/93

Address correction requested

