

HIGHLIGHTS AND HIGHWAYS OF BALDWIN

THE 1939 GUIDE TO BALDWIN COUNTY ALABAMA

AMERICA'S NEWEST PLAYGROUND
ON MOBILE BAY AND THE GULF OF MEXICO

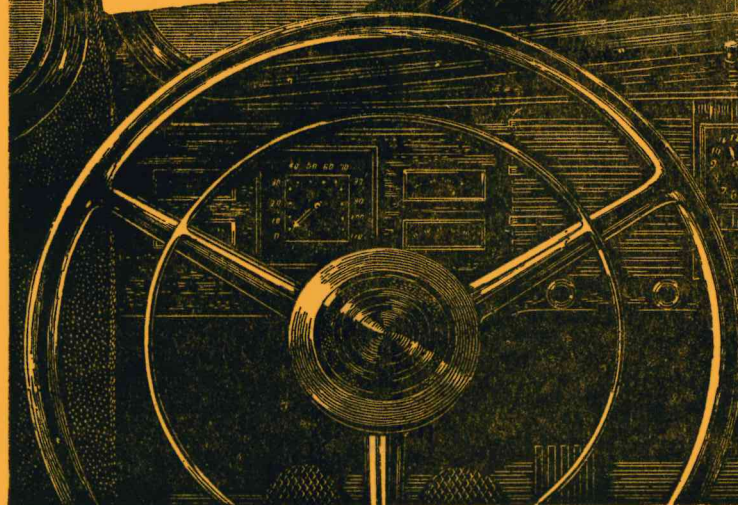


WHAT TO SEE AND HOW TO GET THERE

MAPS INCLUDED

PRICE 25 CENTS

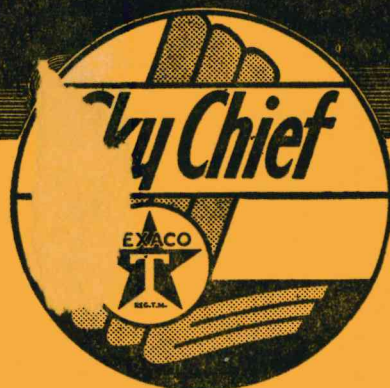
Please take the wheel
and then you'll know what this
new luxury gasoline can give!



IN YOUR OWN CAR *enjoy a new
thrill. Feel a new responsiveness, a surprising
eagerness to do your bidding.*

* * *

There is surprise...enjoyment...pride...in every foot of driving this new gasoline gives you. Yes, you will say that it's different...that you've never seen a gasoline so eager to start...to surge along the straightaway...so positive in the way it takes the hills. And when you get back from your first trip, check up...you'll find your gasoline mileage amazingly high. Try it and see.



SHORTENS MILES...STRETCHES
GALLONS... FLATTENS HILLS
*Your car steps out with Sky Chief.
Yet it costs no more than other premium
gasolines. Don't wait...stop in today
for a "tankful of thrill" for your car.
You won't be disappointed.*

For those who want the best...



**TEXACO DEALERS
of Baldwin County Alabama**

W. A. BOLLER, Distributor

FOLEY, ALABAMA

PHONE 8311

FAIRHOPE
PUBLIC LIBRARY

HIGHLIGHTS AND HIGHWAYS OF BALDWIN

The 1939 Guide to Baldwin County

Published by
THE GOLDENROD STUDIO
Magnolia Springs, Alabama

Copyright 1939, by Walter Overton, Magnolia Springs, Alabama

PRICE 25 CENTS

(Postage Paid)

Note: All communications regarding this publication should be addressed to Claude Bagge, Manager, The Goldenrod Studio, Post Office Box 54, Magnolia Springs, Alabama.

A

*"Come one, come all, on pleasure bound;
That ye seek shall here be found -
From care and sorrow, sweet surcease:
From toil and labor, glad release."*

TABLE OF CONTENTS

The Baldwin Calendar	Page 5	Fort Mims prior to Indian Massacre	Page 23
The Background (Historical Sketch)	Page 6	Street Map of Foley	Page 33
Highways of Baldwin (Trail Descriptions of Principal Highways and Worth- while Tours and Excursions in Bald- win County)	Pages 8 to 44, incl.	Summary of Fish and Game Laws	Page 38
Street Map of Bay Minette	Page 13	"Fisherman's Luck" Record Page	Page 39
Street Map of Fairhope	Page 19	Highways and Waterways Map for Deep- sea Fishermen	Page 44
		1939 Revised Road Map of Baldwin County	Opposite Page 44

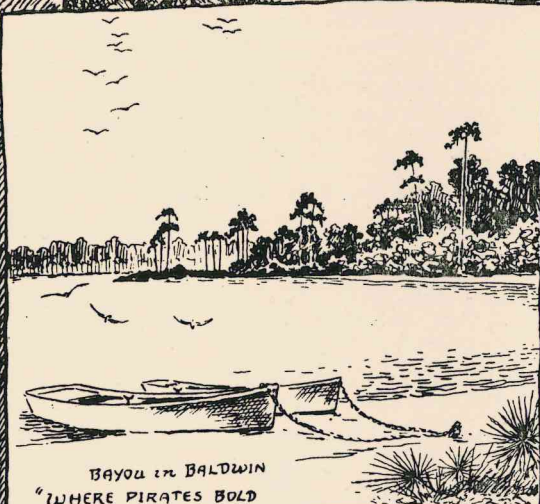
INDEX TO ADVERTISERS

(To the reader: Your copy of Highlights and Highways of Baldwin has been made possible through the interest in your welfare manifested by the civic-minded organizations and individuals whose names appear in the following index. They join heartily with the publishers of this guide book in hoping that your stay in Baldwin will be a pleasant one, and that you will return again and again. In dealing with them you will find yourself in contact with people of known courtesy, with the best of service in their respective lines to offer you. Without doubt you will be best served and best pleased if you will consult them when in search of information or assistance, or when in need of anything they can supply.)

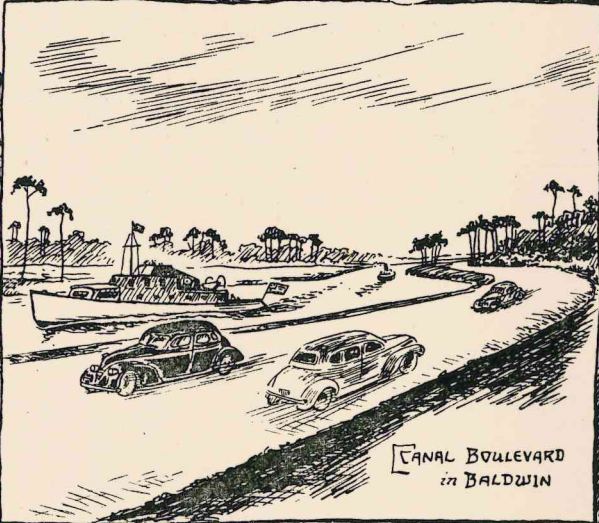
	Page		Page
AIRPORTS:		CIVIC ORGANIZATIONS:	
Oak Air Service*	40	American Legion (see town maps)	25
BAKERIES:		American Red Cross	25
Malbis Bakery	23	Foley Lions Club	30
Smith's Bakery	29	CLEANERS and LAUNDRIES:	
BANKS:		DuBrock Laundry	28
Bank of Fairhope	17	Lowell Bros.	17
Elberta State Bank	30	Steigerwald	29
Farmers' and Merchants' Bank	31	CONTRACTORS:	
CAFES, DINE-AND-DANCE PLACES, RESTAURANTS:		Arthur Holk & Son	35
A. Perske	30	Forster & Sons	20
Archer's Quick Lunch	11	COUNTRY CLUBS (GOLF):	
Blue Light Nite Club	15	Magnolia Springs and Foley Country Club* ..	34
Burkel's Pavilion	36	FILLING STATIONS:	
Canal Cafe	40	Busy Bee Garage	15
Dine-A-Mite*	24	Dade's Garage	35
Ebert's Cafe	31	Doering Service Station	29
Fairhope Casino	16	Griffin's Service Station	21
J's Place	24	Hobb's Service Station	10
Metropolitan Restaurant	22	Hooper Bros. Service Station	11
Nottelmann's Cafe	20	Magnolia Service Station	34
CAMPS, HOTELS and TOURIST HOMES:		Page's Service Station	11
Azalea Court	14	Ruge's Service Station	16
Battles Hotel	35	FISH CAMPS and RESORTS:	
Colonial Inn	16	Edgewater Lodge	30
Dixie Hotel	20	Frederick's Lodge*	41
Fairhope Hotel	17	Gulf Crest Cottages	36
New Beach Hotel*	36	Gulf Shores Playground*	37
Old Spanish Fort Tourist Village*	15	Hewitt's Camp	41
Rhodes Tourist Home	11	Lyn-Mar Resort*	40
San Carlos Hotel	22	Magnolia Plaza*	34
Trammel Hotel	10	New Governor's Club*	36
		Sandyland*	35
		Stenzel Fishing Camp*	36
		Swift's Store and Fishing Camp	42
		Tarpon Lodge*	41

*These advertisers have their location shown on road map in back of book.

ON
THE
NORTH
BALDWIN
IS
BOUNDED
BY
LITTLE
RIVER



BAYOU IN BALDWIN
"WHERE PIRATES BOLD
IN DAYS OF OLD
CONCEALED THEIR TREASURES -
GEMS & GOLD"



CANAL BOULEVARD
in BALDWIN

Walter Overton



ON THE SOUTH, THE BLUE WATERS OF THE GULF OF MEXICO BREAK
INTO CREAMY FOAM ON THE SNOW-WHITE BEACHES OF BALDWIN

Walter Overton

INDEX OF ADVERTISERS

(CONTINUED)

	Page		Page
FUNERAL HOMES and MORTICIANS:		SCHOOLS:	
Christensen Mortuary	28	School of Organic Education	21
Troyer Funeral Home	29		
MOTOR FUELS:		SHOPS and STORES.	
Sherrill Oil Co.	10	Bon Marche	11
Texaco	Inside Front Cover	Brad's	17
		Childress Market	29
MISCELLANEOUS:		Cleverdon Bros.	14
A. A. A.	37	Cook's Market	31
Baldwin County Building & Loan Ass'n.	25	Crosby's Drug Store	30
Baldwin County Fishing Rodeo	25	Davis 5 & 10	29
Ed Lee	11	Fairhope Men's Shop	17
Fairhope Creamery	17	Flower Pot	16
Fairhope Hatchery	21	Foley Hardware	Inside Back Cover
F. H. Bridges	16	Gayfer's	22
Harry Parker and H. W. Graham	15	George Holk	30
Melrose Boat Works	40	Greer's	22
Mobile Cigar Co.	11	Holland's Drug Store	24
Newspapers	28	Hoover Furniture Store	29
Perdido Pass Deep Sea Fishing Ass'n.	42	Ibsen Seed Co.	22
Pinewood Pottery	20	Moore Bros.	34
Single Tax Corporation	26	Moyers Drug Store	16
Studio Touring and Guide Service	37	P. A. Barnard	41
		Pinequat Shop	16
NURSERIES and PLANTATIONS:		Pitman's	17
Baldwin Plantation*	24	Sears, Roebuck & Co.	11
Malbis Plantation*	22	Stacey's Drug Store	31
Perfection Nurseries	28	Swift's Store and Fishing Camp	42
		The Cottage	15
REAL ESTATE and INSURANCE:		Variety Store	30
Baldwin Mutual Insurance Co.	28		
Carl L. Bloxham	16	TOWNS:	
Claude Peteet	34	Bay Minette	12
Dreis Improvement Co.	31	Daphne	15
Elmer Lovell	24	Fairhope	18
G. E. Perkins	20	Foley	32
Harry O. Tingle	31	Robertsdale	14
Howard Gaillard	15	Silverhill	24
Joe Pose	20	Summerdale	14
Magnolia Springs Land Co.	Back Cover		
P. J. Cooney Realty Co.	31	UTILITIES and INDUSTRIES:	
		Butane Gas	21
		Newport Industries, Inc.	10
		Riviera Utilities	29

THE BALDWIN CALENDAR

A LIST OF ANNUALLY RECURRING EVENTS OF INTEREST IN BALDWIN COUNTY

(Note: While this list does not include every event to which the public is invited, it does include those which are best known and most widely attended. In the press of the county one can find notice, as the seasons roll, of an endless succession of activities, entertainments, concerts, parties, fish-frys, etc., to which the public is always extended a cordial invitation. It is suggested that the visitor in the county will increase the pleasure of his stay by consulting his local newspaper for week-by-week news of all these other events. There is always something going on in Baldwin County.)

AMERICAN LEGION CONVENTION: While this event is not an annually recurring Baldwin County event, Baldwin Countians take pleasure in announcing that their county has been chosen as the scene of the state convention of the American Legion for 1939. The dates are July 9, 10 and 11,

with events centering around Fairhope and Foley. (See locations on Fairhope and Foley street maps of American Legion Club and Baldwin County Post No. 99 headquarters.)

AZALEA SEASON: In the early spring, Baldwin County is in bloom. (Continued on page 43.)

THE BACKGROUND



LITTLE IS KNOWN of life in Baldwin prior to the arrival of the Europeans. Something, however, may be gleaned from the accounts of the Spaniards who were the first white men to come in contact with the Alabama Indians. To the north of Mobile's present site lay a great capitol city, Maubila. One may picture Maubila as a teeming walled city of eighty thousand inhabitants, with turreted walls, loopholes and moats, huge wooden dwellings capable of sheltering many hundreds of people each, streets crowded with commerce. Life was metropolitan, sophisticated, related far more closely to the Aztec civilization of the Isthmus than to the nomadic life of the tepee Indian of the northern forests. Such was the seat of government of the over-chief whose surrounding provincial towns on both sides of the bay were, no doubt, smaller replicas of the metropolis, connected with it and with one another by trails suitable for the busy traffic that passed among the communities.

So life went along, through the centuries. But with the coming of the white man a period of collapse set in—a collapse hastened by a disastrous battle, the first great battle between the red and the white races that history records—and not until a time within the memory of some who still live was there again in Alabama a city to compare in population with the one DeSoto crushed in 1540. Ruin fell with a heavy hand upon the city-dwelling Indians, who deserted forever the site of their formerly great capitol; while DeSoto himself, with the shattered wreckage of his once gay expedition, staggered onward to his rendezvous with death beside the Mississippi.

Even before that time the first Europeans ever to set foot within the present boundaries of Baldwin had stepped ashore at a point in Perdido Bay; and in 1519 De Pineda had arrived in Mobile Bay, known then to the Indians as Achusee Bay, and unfurled on its shores the gorgeous banners of Spain. There

come days of peace and mildness when the bay is capable of a beauty that is beyond the power of words to tell. On such a day it must have been for he called the bay *Espirito Santo*—the Bay of the Holy Spirit.

Inflamed by the fabulous tales of gold taken from Mexico and Peru, the Spaniards were, as ever, in search of *El Dorado*—the golden city. Their flag, it has been said, was red for blood, and yellow for gold. Of gold, they found none in Mobile Bay; but of blood there was to be a plenty. And two centuries pass like a troubled dream over Baldwin while one attempt after another to make a permanent foothold fails, and the sonorous "*Vaya con Dios, amigo*," fades with the tinkle of guitar and mandolin into minor strains of melancholy as the day of the *hidalgo* and the *caballero* draws to a close and the blood-and-gold banner is furled. The Spaniard follows his predecessor, the city-dwelling Amerindian in the parade of history that leads to the mists of the past; and the stage is set for the French period.

Even before the year 1700 the Frenchman had already begun moving eastward from his Mississippi base as the Spaniard had come westward, long before, from Florida. Collision was inevitable. An agreement between them in the year 1702 established the Perdido River as a boundary, and the *Fleur-de-lis* blossomed gaily over the meadows of Baldwin. Then it was a jolly "*Bon jour, mon ami*"; for the French had the knack of friendliness with the Indian, and came with the open hand of friendship. But perhaps that was partly due to the Indians, too. For long, long ago the town-dwelling Indian had disappeared, and new Indians—Choc-taws, Cherokees, Creeks—had taken their place. These dwelt with the French in peace and happiness along the shores of Baldwin.

But in Europe the storm clouds were already gathering for the deluge of terror that was to mark the century's end. In 1763 France was forced to cede the territory east of the Mississippi, including Baldwin, to England; and Britain's proud banner

came to replace the Fleur-de-lis. The British fortified Mobile Bay on both shores, but Spanish and French inhabitants, left over from other days, still remained. Britain became embroiled elsewhere and in 1779 the Spanish, who in their hearts had never fully relinquished their claim, recaptured their former holdings and kept Mobile Bay for twenty-one years, setting the Castles and Lions to fluttering briefly over Baldwin again, like a memory of old times.

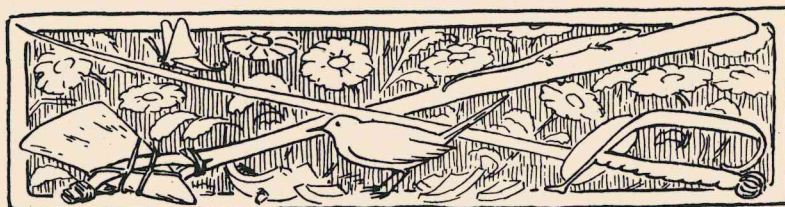
While this medley of claims and counter-claims went on, events moved to a swift crisis in the Old World. With a crash of cannon the map of Europe was torn asunder. In 1803 Napoleon sold the Louisiana Territory to the United States, which at once claimed the shores of Mobile Bay were included in the purchase. Confusion double confounded prevailed, and even American military occupation of Mobile failed to quiet the contestants. Even so ancient a claim as the Indian's was becoming politically active again, and to cap the climax, local white settlers talked of setting up an independent government. In 1812 the United States found itself at war with Great Britain, and as a corollary action, the Creek War flared out in Baldwin. Then came the fearful disaster at Fort Mims, recorded by history as the worst Indian massacre to occur on the North American continent throughout all time.

But here the impetuosity of Andrew Jackson took a hand in Baldwin's destiny. Stung beyond his limit of endurance by the hideous, growing roll call of innocent dead, that fiery soul cast wordy disputes aside and entered Baldwin like a thunder-clap. In a lightninglike campaign he rebuffed the British claims forever, defeated the Indians, drove the Spanish before him in a retreat that never halted this side of Havana. March after march established complete order and left the Stars and Stripes in undisputed sway, assuring peace and friendship among the many groups of different nationality who, because they loved their homes in Baldwin, had remained through all history's changes. In the tranquil sunshine that followed the

tempest American settlers poured westward in a steady stream from the eastern provinces and settled beside the Indians, the Spaniards and the French and the smaller number of British to completely Americanize the gulf coast. History records no more Old World flags in Baldwin, nor in the century and a quarter since Jackson's campaign has there been the shadow of a foreign claim.

Settlements grew, commerce arose. Blakeley was built—a seaport with a strange story, a city now long given over to the cicada and the chameleon. But troubled days still lay ahead, with the storm clouds of secession already in the sky. For ten anxious but thrilling days in '61 Baldwin lived under the flag of the Republic of Alabama; then came the heart-rending years when Baldwin boys rallied gallantly around the Stars and Bars under a pall of battle smoke that filled the pine forests with the gloom and sorrow of civil strife. The last major campaign of the War between the States was concentrated in Baldwin and directed at Mobile through Blakeley; and around Blakeley and Spanish Fort the last great battle of the war was fought to its tragic end—doubly tragic, since, the surrender of Appomattox having been previously made, the war was already at an end.

The weary, difficult days of reconstruction; the prosperous days of cotton, lumbering, turpentine, cattle raising; the merry days of steam-boating on river and bay; the noisy days of jazz, gasoline and the radio—the story of all Dixie through these years is the story of Baldwin, too. And so we leave the long span of history behind and come to the Baldwin of this day and time. The tomahawk of the Red Man, the harquebus of the Conquistador, the Frenchman's sword, the musket of the Britisher and the long rifle of the Pioneer; all are at rest. Twice have the bugles sounded to summon the boys of Baldwin around the Stars and Stripes—once for the war with Spain, once again for the World War. But never again have the battle lines wavered, retreated, advanced over the fields of Baldwin while homes burned and hearts broke. Heaven send it may be always so!



HIGHWAYS OF BALDWIN

(Note: When running these trails in the direction opposite to that in which they are written, read upwards and reverse all such indications as "left", "right", etc. On leaving a highway at an intersection the reader, by consulting the road map and turning a few pages to the appropriate place in this guide book, will find himself in the proper trail log for his new trail.)

ALABAMA NO. 3, COUNTY LINE TO GULF SHORES (58 Miles)

COUNTY LINE TO BAY MINETTE (12 Miles): The motorist entering Baldwin County from northwards crosses the county line on Ala. 3 (US 31). Almost at once the Perdido highway (paved) is seen leading off to the right where, at a distance of about 1 mile, is the village of Perdido. Turpentine center and railroad point (see map). Other villages lying westwards of the highway farther along are Dyas and Carney, but the roads leading to them are unpaved and unmarked. The highway continues southeastwards through thinly-settled, rolling country, with interesting landscapes of great natural beauty.

BAY MINETTE

(County line 12 Mi. -- Gulf Shores 46 Mi.)

At about 12 miles from the county line one approaches Bay Minette, the seat of county government in Baldwin County. Here are found all the central offices from which the various governmental activities of the county are directed. All highways, in passing, touch the courthouse square, which is at the center of the business district. The town takes its name from Minette Bay (the estuary outlet for Bay Minette Creek -- see road map) which bay took its name, in turn, from the Frenchman Minet, a surveyor associated with Bienville in the days of French occupation. Originally a settlement and postoffice on the bay, both postoffice and settlement were moved to the present site of the county seat when the railroad was laid down, and the town at once began a rapid growth to its present place and importance in the county.

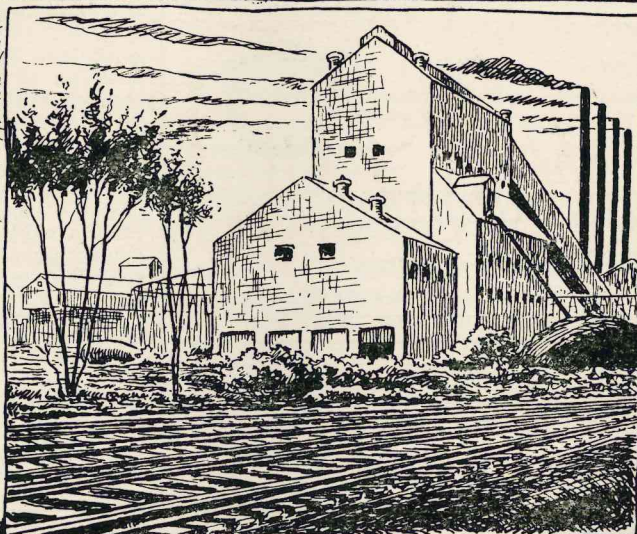
Bay Minette has been for many years an incorporated town, with paved streets, electricity and every convenience of modern life. Well-governed,

and with a citizenry high in ideals, the community presents every cultural opportunity. Churches of almost every denomination are found, and the ministers of the various congregations extend a hearty welcome to everyone to join in the services and social activities of the church groups. A splendid consolidated school system offers the best of educational facilities. Civic clubs of the highest order have been and are a source of inspiration and help in upbuilding the community, among them the Bay Minette Lions Club. An excellent public library is maintained in the town hall building near the courthouse.

Bay Minette is the industrial center of Baldwin County; and outstanding in the industrial life of the entire county is the Newport Plant, where a modern process for extracting tar products from the stumps of pine trees is used. Operations on a huge scale create a large year-round payroll and expenditure sheet that are an aid to prosperity not only for Bay Minette, but for the entire county, as the mill's outlying operations and purchases are countywide. The milling process is a fascinating one to watch, but the management is reluctantly compelled to decline the pleasure of receiving visitors at the plant on account of danger arising from the extremely inflammable nature of all the materials involved. A stave mill is another interesting and beneficial industry located in Bay Minette. Here visitors can be, and are, welcomed; and a visit to this mill is recommended to any who wish to see a typically Southern industry in process of operation. Any citizen of Bay Minette will gladly direct visitors to the mill. It is scarcely necessary to point out to the traveler, from whatever direction he approaches, that Bay Minette is the banking, shopping and shipping center for a large agricultural area. Adequate transportation facilities



THE
WHEELS
OF
INDUSTRY



ARE HUMMING
IN
BALDWIN



WHERE TWO BAYS MEET IN BALDWIN



BLAKELEY TODAY



MANY OF BALDWIN'S OLDER
INDUSTRIES ARE LOCATED ON THE WATERWAYS

Walter Overton



"POWER BUDDIES"

Come To Baldwin County

ENJOY OUR BEAUTIFUL GULF COAST
Unexcelled — Bathing, Fishing, Hunting, Golf, Etc.
THE PURE OIL SERVICE STATIONS ARE YOUR
FRIENDLY NEIGHBORS

Courteous and Complete Bumper To Bumper Service
Sanitary Rest Rooms — Of Course

W. Max Griffin, Distributor

SHERRILL OIL COMPANY

PURE OIL PRODUCTS

Phone 2402

FOLEY, ALABAMA

(Baldwin County's Riviera Center)

"Be Sure With Pure"

We Are Also Boosters For Baldwin County

NEWPORT INDUSTRIES, INC.

BAY MINETTE, ALABAMA

TRAMMEL HOTEL

Modern Rooms - Reasonable Rates - Home Cooked Meals
Private Baths and Showers - All Modern Conveniences
Under New Management - E. B. Still, Mgr.

BAY MINETTE, ALA.

PHONE 9101

HOBBS SERVICE STATION & TRAILER COURT

(On U. S. 31)

Free Parking - Tourist Information - Groceries - Cold Drinks
Gas and Oil

BAY MINETTE, ALA.

PHONE 104

are provided, as the town is a railroad junction and the focal point for four bus line services, with paved roads and truck lines leading outwards in every direction. Every convenience is at hand, and every inducement is offered, for the location of new industries, with markets, materials, power, transportation, desirable labor conditions, friendly city and county government; and industrial concerns seeking a grade A, first-class location should write to the editor of The Baldwin Times, Bay Minette's progressive weekly newspaper, for further information.

Beautiful homes with green lawns and luxuriant flower gardens, old-fashioned Southern hospitality and courtesy, excellent hunting and fishing in the environs, make Bay Minette a good and neighborly place to live, a desirable center from which to visit fascinating and historic up-county spots (see later pages of this book). Excellent hotels and tourist homes await the visitor. A stopover, or better still, a prolonged visit is suggested as a far better opportunity for learning all about Bay Minette's many advantages than a mere printed page can provide.

BAY MINETTE TO ROBERTSDALE (25 Mi.): Leaving Bay Minette, the highway continues southwards over Ala. 3, the all-paved route from the Great Lakes to Mobile Bay and the Gulf of Mexico. At 11 miles the highway passes through Stapleton. Postoffice, filling and service stations, small stores. Just south of Stapleton the pavement forks, the right-hand surface leading to Fairhope and Mobile Bay (see map, also later pages of this guide). Ala. 3 continues straight ahead to Loxley, 9 miles. Just north of Loxley the Old Spanish Trail (US 90, see map) enters from the west, and for a brief space (to Robertsdale) the two trails run over the same pavement. The landscape has changed, now, from timber (with occasional farms dating back to earlier days) to the newer farms of later settlement; and the motorist enters a more heavily settled region of "new" country, with farms and farm homes clustered thickly on every side. This is the beginning of the more level country of the coastal plane. Passing Loxley (shipping center for agricultural produce) the motorist con-

tinues 5 miles to Robertsdale. On the left (east), at the northern limits of Robertsdale, intersection with Old Spanish Trail (US 90), to and from Florida points. Ala. 3 continues directly ahead into Robertsdale.

ROBERTSDALE

(County line 37 Mi. --
Gulf Shores 21 Mi.)

Robertsdale is known far and wide as "The Hub City of Baldwin County". Located at the junction of the Old Spanish Trail (US 90) with Ala. 3, it is at the crossroads of south Alabama, as well as being a railroad point and a concentration center for bus and truck transportation lines. For miles in every direction paved highways lead out though prosperous, bustling farm regions that mark the newer farm development of Baldwin. All around Robertsdale, too, lie the nationally-known recreational opportunities that make life in Baldwin a better, happier life; just as the better farming conditions (longer growing season, abundant rainfall, prolific soil, good roads and adequate transportation, etc.) make the farmer's life in Baldwin a more-than-average prosperous farm life.

Robertsdale citizens are proud of their town, and justly so. It is an incorporated municipality, and every advantage of modern life is enjoyed. A recent paving project has modernized the town in respect to its streets, and a mild and wholesome boom is under way, with every prospect of continued growth as an agricultural center and shipping point. Churches of the usual denominations (where the stranger is heartily welcomed), a first-class consolidated school system, and other advantages afford every ethical and cultural opportunity. A visit to Robertsdale -- especially in the harvest and shipping season -- is recommended.

ROBERTSDALE TO SUMMERDALE (5 Mi.): At the southern boundary of Robertsdale, junction with the Silverhill highway (paved) on the right (see road map and trail log No. 4). Ala. 3 continues due south, through rich farm lands, to Summerdale, 5 miles. This entire span of highway (Robertsdale to the Gulf of Mexico) is known as the Sibley Holmes Trail.

THE RHODES HOME

On Highway U. S. 31 - State 3 - Two Blocks from Court House
A Strictly Modern Home - Spacious Parking Space
BAY MINETTE, ALA. PHONE 31

BUDWEISER

KING OF BOTTLED BEERS
Mobile Cigar and Tobacco Co.
Distributors

HOOVER BROS.

(1½ Miles South Bay Minette)
Standard Oil Products - Good Year Tires
Sandwiches Drinks

SAVE AT SEARS!

*The thrift store of West Florida
and South Alabama---modern
and complete in every respect.*

SEARS, ROEBUCK & CO.
Pensacola, Fla.

ED LEE

Studebaker - De Soto - Plymouth
209-11-13 North Palafox Street
PENSACOLA, FLORIDA
"We Appreciate Your Business"

When In Pensacola Visit

BON MARCHE

Where Women Like to Shop

PAGE'S SERVICE STATION

Road Service - Phone 85

Bay Minette, Alabama

ARCHER'S QUICK LUNCH

Steaks and Chops a Specialty
Ice Cream - Homemade Pies

Robertsdale, Alabama

Bay Minette

County Seat of Baldwin Co.

Bay Minette has been blessed by the bountiful natural gifts of God. This progressive city is located in the heart of fertile lands which give forth bountiful supplies of farming and timber crops.

Its agreeable, mild climate makes Bay Minette an ideal place in which to live. It is the transportation center of this great county, being the junction of two railroads, two state highways and four bus lines.

It is the cotton, lumber and turpentine center of Baldwin County and is the home of the Newport Industries, which is the largest industry in the county and gives work to about 250 men.

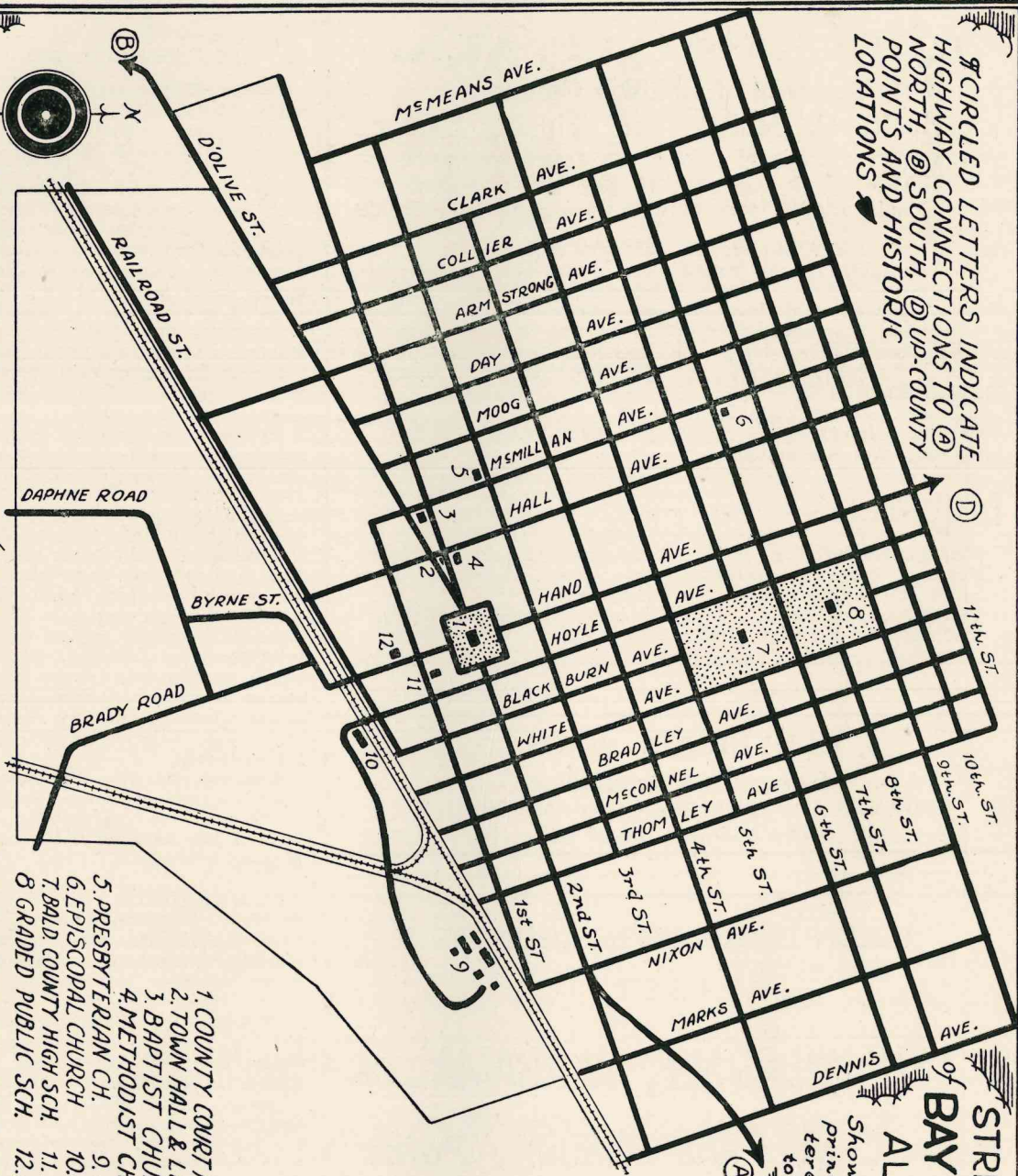
It is the mail center of the county and has one of the most beautiful post office buildings of any town its size in the United States.

Seat of the county government, Bay Minette has two modern schools—the high school is one of the largest county schools in Alabama and offers training in vocational agriculture. With the schools and six churches, the town has a fine cultural and spiritual standard of living.

Farmers and home seekers of a progressive nature are urged to move to Bay Minette or vicinity and grow with this community into an even greater era of prosperity.

OPPORTUNITY and a WARM WELCOME await
you in Bay Minette, Alabama

CIRCLED LETTERS INDICATE
 HIGHWAY CONNECTIONS TO
 NORTH, @ SOUTH, @ UP-COUNTY
 POINTS AND HISTORIC
 LOCATIONS



STREET MAP
 of
BAY MINETTE
 ALABAMA
 Showing location of
 principal points of in-
 terest inside the
 town limits

1. COUNTY COURT HOUSE
2. TOWN HALL & LIBRARY
3. BAPTIST CHURCH
4. METHODIST CHURCH
5. PRESBYTERIAN CH.
6. EPISCOPAL CHURCH
7. BALD COUNTY HIGH SCH.
8. GRADED PUBLIC SCH.
9. NEWPORT MILL
10. R.R. STATION
11. WESTERN UNION
12. POSTOFFICE

Goldenrod Studio

(NOTICE: THIS MAP IS DRAWN APPROXIMATELY, BUT NOT EXACTLY, TO SCALE)

ROBERTSDALE, ALA.

The Hub of Baldwin County Agricultural, Poultry, and Shipping Center

ITEMS OF NOTE

Paved Road to all Places of Interest

One of the Few Areas on the Gulf Suitable for all round Farming

320 Growing Days in Year

No Regional Diseases

.9996% Pure Water

Mixed Population

Plentiful Rainfall

Conditions Benefit Very Many

Chronic Ailments

12-Grade State Accredited

School

INDUSTRIES

Principally Farming

Poultry, Trucking, Dairying

Stock Raising, Etc.

Tung Oil, Turpentine

Undeveloped Art Clay, Etc.

LOCATION

In Prosperous Baldwin County

45 minutes to Mobile

45 minutes to Pensacola

30 minutes to Gulf of Mexico

20 minutes to Perdido Bay

20 minutes to Mobile Bay

14 hours to Chicago

On Greyhound Bus Line

On L. & N. Railroad

SPORTS NEARBY

National Park at Ft. Morgan

Fresh Water Fishing

Salt Water Fishing

Deep-Sea Fishing

Hunting: Quail, Doves, Squirrels, Deer, Turkey, Black

Bear, Etc.

Boating, Bathing, Cruising,

Golf, Etc.

SUMMERDALE

(County line 42 Mi. --
Gulf Shores 16 Mi.)

Summerdale is another of Baldwin's incorporated towns. Modern conveniences, consolidated public school system, a progressive attitude on the part of the citizens, make this a splendid community with every inducement to growth and future prosperity. A railroad point, the town is a heavy shipping center for produce from the neighboring farm lands, which are unexcelled in fertility. This community was one of the earliest of Baldwin's towns to begin the heavy shipment of agricultural products that go out from Baldwin now to all parts of the nation.

Notice from the road map that north and south of Summerdale the Sibley Holmes Trail (Ala. 3) divides to offer the motorist his choice of going through the town or passing along the outskirts. The mileage is the same in either case, and the left hand turn (going south -- right hand, going north) through town is recommended, especially to any who are interested in farming or farm lands. Summerdale invites investigation from prospective farmers, as do all these farming community centers adjacent to and along the railroad.

Needless to say, Summerdale churches and ministers cordially invite you to participate with them in the services of the church of your affiliation.

SUMMERDALE TO FOLEY (6 Mi.): The Sibley Holmes Trail (Ala. 3.) reunites south of Summerdale, continuing southwards to Foley, 6 miles.

FOLEY TO GULF SHORES (10 Mi.): For description of Foley, see trail log No. 6. The Sibley Holmes Trail passes directly under the traffic light in Foley and continues due south. The traffic light marks the intersection with the Scenic Highway (east and west; see trail log No. 6). Four and a half miles south of Foley, junction on the right with the Bon Secour highway (trail log No. 11). At 5 miles, on the right, Oak Airport, Baldwin's modern, officially recognized airport (see map). All kinds of flying services, charter planes, flying instruction, etc., are here available. The motorist is now leaving the farming belt be-

CLEVERDON BROS.

General Merchandise

GROWERS AND SHIPPERS OF FARM PRODUCE

SUMMERDALE, ALABAMA

WHEN IN BALDWIN COUNTY

— VISIT —

SUMMERDALE, ALABAMA

Farm Center and Shipping Point

AZALEA COURT

HAYSELDEN AND HAYSELDEN

Texaco Products and General Merchandise

TOURIST ACCOMMODATIONS

On Highway 1 Mile North of Foley, Alabama

hind and is entering the very heart of the fishing country known throughout the nation as "The Fisherman's Paradise." At 8½ miles, Intracoastal Canal crossing (see map). Excellent salt water fishing, no license required. On south bank of canal, on the left (east), junction with Orange Beach -- Caswell highway (graded clay; see trail log No. 12) leading to deep-sea fishing region and fishing grounds of Baldwin County Fishing Rodeo. At 9 miles, CCC camp marks the entrance (left-hand turn off the pavement, after passing buildings) of Gulf Park, famous state and national park reserve (see special map at foot of trail log No. 12). The Sibley Holmes Trail (Ala. 3) turns right, following the pavement, and runs onto the Dixie Graves Parkway (trail log No. 9) leading to famous and historic Fort Morgan. Almost at once, where the Dixie Graves Parkway begins, the Sibley Holmes Trail turns left off the pavement (first left turn; graded clay), and a brief ride (1 mile) brings the motorist face to face with the glorious, snow-white beach and rolling blue surf of the Gulf of Mexico. The motorist will notice with delight that here one drives directly to the open gulf beach, without toll bridges or bay or lagoon interference -- one of the few spots on the entire rim of the gulf where this can be done.

**2. ALABAMA 3,
COUNTY LINE TO FAIRHOPE
(45 Miles)**

COUNTY LINE TO DAPHNE 40 Mi.): The motorist coming into Baldwin County from the north crosses the county line on Ala. 3 (US 31). He should pick up his trail at the beginning of trail log No. 1, following on that trail log through Bay Minette to Stapleton. At Stapleton, return to trail log No. 2 at this point. Where the highway forks just south of Stapleton his trail is the right-hand highway (US 31) leading off to Mobile Bay and Fairhope. (The left-hand pavement is junction departure of Ala. 3 leading down to the Gulf of Mexico -- see road map.) A short run (10 Mi.) through hilly, heavily-forested country brings the motorist to the upper end of historic Mobile Bay at Old Spanish Fort where US 31 merges with the Old Spanish Trail (US 90) to cross the bay

DAPHNE, ALABAMA

"On Mobile Bay"

**Nearest Eastern Shore Point To Mobile
Beautiful and Restful Surroundings**

Wonderful Climate. - Kindly People
Ideally Adapted to Home Building
GOOD FISHING - GOOD BATHING - GOOD HUNTING
Daphne Offers You Economy And Health

HOWARD GAILLARD

REAL ESTATE BROKER AND INSURANCE
Farm Acreage - Poultry Ranch Sites
Sales and Rentals A Specialty
INQUIRIES COMPETENTLY ANSWERED

OLD SPANISH FORT TOURIST VILLAGE

Mr. and Mrs. Geo. E. Fuller Owners
12 Miles East of Mobile, Ala. - Telephone Fairhope 500
Historic Spot of the Deep South - (Open all night)
See Gulf Shores Playground ad on page 37 - see location on map

Interesting Antiques - Furniture and Decorative Objects
AT

The Cottage

MONTROSE, ALA.

Lookers Cordially Invited - Correspondence Solicited

Come in without KNOCKING - Leave the Same Way

BLUE LIGHT NITE CLUB

WE SPECIALIZE IN FRIED CHICKEN

Lee Parker, Prop. Fairhope, Alabama
On Mobile Bay

"WE'LL FIX ANYTHING - ON WHEELS"

BUSY BEE GARAGE

KLEIN BROTHERS

Auto & Tractor Repairing

All Supplies - Phone 9116 - Fairhope, Alabama

Surveying and Abstracting

H. W. GRAHAM - HARRY H. PARKER

FAIRHOPE, ALABAMA

— FOR —
Tourist Information - Magazines - Ice Cream
Post Cards - Kodak Supplies - Film Finishing
 — SEE —

R. ROY MOYERS
DRUGGIST
FAIRHOPE, ALABAMA

Vacation This Winter in a Southern Home

THE COLONIAL INN

Fairhope, Alabama. - Mrs. V. S. McClintock, managing owner
 The Beauty of the House is Order-
 The Blessing of the House is Contentment-
 The Glory of the House is Hospitality."



THE PINEQUAT SHOP - Fairhope, Alabama
 The oldest business in town under the same management occupying the oldest business building. (39 years in the same location)
 Manufacturers of candied fruits and southern novelties - Dealers in oriental and general gift lines. Write for price list

RUGE'S SERVICE STATION
"The Mecca" Tourist Information
Good Gulf Products - Texaco Products
FAIRHOPE, ALABAMA

F. H. BRIDGES
 Watchmaker and Jeweler
 Keys Made
 Fairhope, Alabama

THE FLOWER POT
 Gift Cards and Flowers
 Fairhope, Alabama

REAL ESTATE AND INSURANCE
 Sales - Rentals - Property Management - General Insurance
CARL L. BLOXHAM
FAIRHOPE, ALABAMA - NEXT TO POSTOFFICE
 Phones: Office 56 - Dwelling 70

FAIRHOPE CASINO
 Largest Place on Mobile Bay
 Rooms - Bathing - Dancing - Eats - Cold Drinks of all kinds
 Free Pavil'on for Conventions, Picnics, Meetings and Parties
 Accommodations for 2000 People Ch. Hipsh, prop.

on Cochrane Bridge (see map). Where the trails meet (first left pavement) the left turn leads to Fairhope and all eastern shore points.

(At the trail junction is Old Spanish Fort; also Fort McDermott. In the woods all around are found the entrenchments and gun placements of the best preserved battlefield in North America. Scene of many struggles among the various European colonial forces in earlier days, the vicinity later became the theater of action for the bitterly contested final campaign of the War between the States (see "The Background," page 7, also Blakeley, under trail log No. 7, for further mention of this battle). Very interesting exploring and souvenir hunting in this neighborhood. For more complete information, inquire at Old Spanish Fort Tourist Village, at the trail junction.)

Leaving Old Spanish Fort the Fairhope highway continues southward over smooth pavement through hill country of great beauty. To the right, glimpses of Mobile Bay add charm to the ever changing, always fascinating landscape. A scant half mile south of Old Spanish Fort the Old Spanish Trail turns off to the left (east) leading to and from Florida points (see map, and trail log No. 3). Hold straight ahead, along the bay, for Fairhope. This entire span of highway, from Old Spanish Fort south, is known locally as the Eastern Shore Boulevard, a link in the Scenic Highway of Baldwin (see trail log No. 6). Just north of Daphne notice on the right the woods trail leading off to Jackson's Oak and "The Village" (see location and historical note on road map). Nothing remains now of The Village except an avenue of oaks. At about 7 miles from Old Spanish Fort the motorist finds himself in Daphne.

DAPHNE

(County line 40 Mi. --
 Fairhope 5 Mi.)

The highway passes through Daphne's business district at a short distance back from the bayfront. A visit to the bay is recommended, as the waterfront is extremely beautiful, with giant oaks trailing their languid festoons of Spanish moss and beautiful old estates overlooking the cliffs. The Methodist church (very

old) has a slave gallery (entrance from outside, at right) that is an interesting bit of architecture from other days. The Catholic church contains interesting and beautiful gifts sent especially to this church group by Queen Margherita of Italy in 1898. The buildings of the Daphne State Normal School are located near the bay.

Daphne is now in process of expansion and development, with rent cottages and resort facilities along the bay and rich farm lands in the interior to the east of the highway. Excellent schools and all modern conveniences are found. The Daphne May Day festival attracts throngs each year from far and wide. Daphne churches welcome visitors to their services and to the social activities of the various church groups.

DAPHNE TO FAIRHOPE (5 Mi.): Almost at once after leaving Daphne the motorist is passing through Montrose. This is a very old eastern shore summer resort settlement dating back (like Daphne) to steam-boating days on the bay. Lovely old estates overlook the bay from a bluff along the waterfront. Views of greatest charm characterize the roadside and the full beauty of the bayfront is more and more realized as the fast, smooth pavement leads onward through scenes typical of the Old South. Between Montrose and Fairhope, watch road map for location of turn-off (to right, woods trail) at Sea Cliff, where a short drive takes one to the edge of Ecor Rouge (Red Cliff). The view over the entire expanse of the bay from this cliff is worth seeing, the vantage point being from the top of the highest bluff washed by salt water between Maine and Mexico. The red face of the cliff falling sheer to the beach below earned it the name of Ecor Rouge from the French settlers in early days. On the left, just before entering Fairhope, is the trail junction with the Silverhill highway (see map and trail log No. 4). One mile south of Sea Cliff the motorist has arrived in Fairhope -- on Mobile Bay.

FAIRHOPE

Fairhope stands looking over Mobile Bay from a plateau that marks the southernmost reach of the Appalachian Highlands where they come finally to rest beside salt waters tributary to the Gulf

BANK OF FAIRHOPE

FAIRHOPE, ALABAMA



"On Mobile Bay"

Inquiries regarding this vicinity welcomed

BRAD'S TOURIST INFORMATION

KODAK SUPPLIES - SODA FOUNTAIN - TOBACCO
CANDY - CURB SERVICE
FAIRHOPE, ALABAMA

Fairhope Hotel and Cottages

"ON MOBILE BAY"

New Modern Fireproof and Comfortable - American Plan
Weekly rates on application - A homey place to spend the winter
Fairhope, Alabama Mrs. J. R. Cross, Prop.

FAIRHOPE MEN'S SHOP

Baldwin County's Only Exclusive Men's Shop

ED TILTON, Prop.

Lowell Bros. Dry Cleaners

—CALL 74W—

HATTERS AND TAILORS

Prompt and Efficient Service Daily

Over 28 years of cleaning service to Fairhope and the Eastern Shore

J. I. PITMAN AND CO.

Fairhope's Only Department Store

"We Appreciate Your Visits To Our Store"
PHONE 45 FOR QUICK DELIVERY

FAIRHOPE ICE AND CREAMERY CO.

AZALEA DAIRY PRODUCTS

First Creamery Started In Alabama

FAIRHOPE

- on Mobile Bay -

Largest Town in Baldwin County

★ ★ ★ ★ ★ ★ ★ ★

Home of Famous School of Organic Education and
Fairhope Single Tax Corporation

★ ★ ★ ★ ★ ★ ★ ★

New 1800 ft. Electrically Lighted Recreation Wharf

★ ★ ★ ★ ★ ★ ★ ★

Sixty-Five Acres Public Parks and Bathing Beaches

All Modern Facilities and Paved Streets

★ ★ ★ ★ ★ ★ ★ ★

Excellent Schools and Churches

★ ★ ★ ★ ★ ★ ★ ★

Electric, Water and Sewer Systems Owned and Operated
By The Town

★ ★ ★ ★ ★ ★ ★ ★

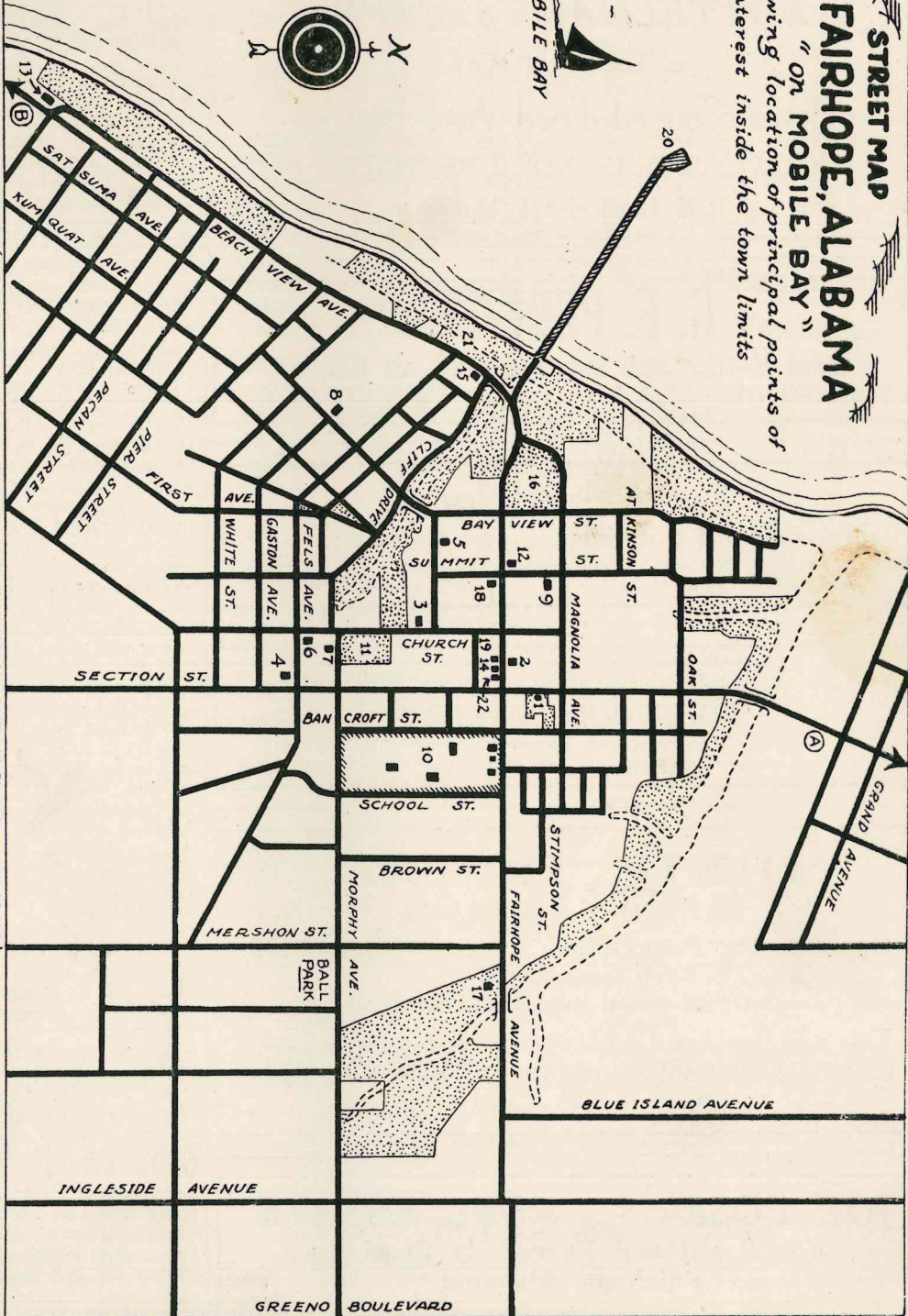
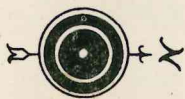
A Summer and Winter Resort of Note

STREET MAP of FAIRHOPE, ALABAMA "ON MOBILE BAY"

Showing location of principal points of
interest inside the town limits

MOBILE BAY

GOLDENROD STUDIO-1939



1. CITY HALL
2. POSTOFFICE
3. CHRISTIAN CHURCH
4. METHODIST CHURCH
5. EPISCOPAL CHURCH
6. CHRISTIAN SCIENCE CH.
7. BAPTIST CHURCH
8. CATHOLIC CHURCH
9. PUBLIC LIBRARY
10. ORGANIC SCH. CAMPUS
11. PUBLIC SCHOOL
12. ROTARY CLUB
13. AMER. LEGION CLUB
14. WESTERN UNION
15. COLONIAL INN
16. KNOLL PARK
17. MUNI. GOLF COURSE
18. TOURIST CLUB
19. SINGLE-TAX CORP.
20. MUNI. PLEASURE PIER
21. MUNI. TENNIS COURTS
22. BANK OF FAIRHOPE

(NOTICE: THIS MAP IS DRAWN APPROXIMATELY, BUT NOT EXACTLY, TO SCALE)

① HIGHWAY CONNECTION TO NORTH, EAST, WEST.
② HIGHWAY CONNECTION TO SOUTH.

Shaded areas are public parks.
Dotted line, edge of bluff on bay
front and along ravines.

FAIRHOPE

ALABAMA

NOTTELMANN'S CAFE

Is The Only Way

Home Cooked Food And Pastries

QUALITY HAS NO SUBSTITUTE

WE HAVE QUALITY

G. E. PERKINSReal Estate and Insurance of all Kinds
FAIRHOPE, ALA. PHONE 32-W**Forster and Sons**

General Contractors and Builders

Estimates Furnished on Request
FAIRHOPE, ALA. PHONE 20

See Edith Harwell, one of the few active women potters of the U. S., creating beautiful hand-made art pottery from local clay.

PINEWOOD POTTERYPinewood and Bayou Charbon
FAIRHOPE, ALABAMA**DIXIE HOTEL**

FAIRHOPE, ALABAMA

Opposite The Post Office - Phone 9102

Ralph Young, Proprietor

"AWAY DOWN SOUTH IN DIXIE"

You will find the Comfort, Cleanliness and Contact that will make your visit to Fairhope, Ala.,

"On Mobile Bay," a pleasant Memory.

JOE POSE - REAL ESTATEWaterfront and Farms My Specialty
Fairhope, Alabama

of Mexico. In a springtime that comes while blizzards still freeze the northern forests, the dogwood blossoms whiten the parks of Fairhope and song-birds trill their sweet melodies in the strong, warm sunshine. Among the first considerations of Fairhope's founders was the establishing of a park system that would save for posterity the natural beauty of Fairhope. The town now owns sixty-five acres of wooded parks and two miles of unequalled bathing beach, with the longest pleasure pier in Mobile Bay (1800 feet). Bath houses and water sports equipment are provided, and the pier is electric lighted. Sailboats find here ideal waters for their maneuvers, and canoeing and rowing are also enjoyed. Picnic equipment (tables, fireplaces, etc.) have been provided in the beach park. Tennis courts are available in the park above the cliff, and a most beautiful and exceedingly sporting nine-hole golf course is municipally owned and operated. Each year, on the Fourth of July, a midsummer fete is held in compliment to Fairhope's summer visitors. All day and far into the night the fun continues, with a thrilling display of fireworks on the beach at twilight. Labor day, too, the culmination of the summer season, is a day of sports and fireworks that draws a host of merrymakers. During the winter months the Fairhope Tourist Club is the center for tourist social and entertainment activities.

The little band of colonists that founded Fairhope (in 1895) was led by the late Ernest B. Gaston. Under his kind, wise leadership Fairhope grew from a clearing in the pine woods to an incorporated modern municipality of happy homes and prosperous businesses. This group was convinced that the Single Tax theory of collecting revenues for government expenses was the right one, and the colony was an experiment to see what results application of that theory would achieve. The degree of success attending their experiment is best told by the never-ceasing growth and expansion of Fairhope. Under this plan the Single Tax Corporation (address, Fairhope) holds available for occupancy business, residence and farm properties. But Fairhope has far outgrown its original bounds, and a great deal of most desirable property of all kinds is available to

purchasers for individual ownership.

The mild winter climate of Baldwin brings to Fairhope an annual host of winter visitors and residents; while in the warmer months a large and increasing number of summer vacationists come here to find relief from the heat of the interior in the cooling breezes that sweep in from the gulf and the bay at that season. The community is the home of the nationally known School of Organic Education, now in its thirty-second year, and this unusual experiment in modern education annually draws to Fairhope a large group of visitors. Due to an unusually active intellectual life, as well as to its great charm and beauty, Fairhope has always attracted a great many writers and artists.

Fairhope is fortunate in having an active and progressive Chamber of Commerce. The sentiment of this able association of prominent citizens is "Forward Fairhope" and the fruit of their labors is evident on every hand. Write or ask them about Fairhope. Your inquiry will be welcomed. A first-class consolidated public school system is maintained. Every church denomination is represented, and the visitor is cordially invited to attend their services. An unusually good public library of some fifteen thousand volumes is a source of pride and benefit to the community. The streets are paved, and with one exception all public services are municipally owned and operated. A unit of the Rotary International welcomes visiting Rotarians. An excellent weekly paper, The Fairhope Courier, carries Fairhope news to the community and to the outside world. Every choice in hotels and rent cottages can be gratified, and accommodations can be quickly arranged for either an overnight or an all winter or summer stay. You will enjoy your visit. Fairhope people are friendly people; and the impression of nature's beauty on the one hand and human friendliness on the other will live with you in memory and draw you back again to Fairhope -- on Mobile Bay.

3. OLD SPANISH TRAIL
(US 90) CONNECTING PENSACOLA AND MOBILE THROUGH
BALDWIN COUNTY.
(65 Miles.)

(Note: East to west, read down-

"A Baby Gas Well For Every Back Yard"

MODERNIZE YOUR HOME WITH GAS

For a small investment you can install Butane gas equipment in your home and have all the conveniences of a home in the city. Butane gas can be used for cooking, heating, lighting and refrigeration, all this for only a few cents per day.

The average family of five persons can have this convenience for only \$3.50 to \$4.00 per month.

We handle only the best grade of Butane gas thereby assuring our customers of a fast, clean and hot flame. No smoke, soot or odor.

Call or write us for an estimate of your requirements, no obligation.

BALDWIN COUNTY BUTANE GAS CO.

FAIRHOPE, ALA.

Phone 99

Phone 126

VISIT THE SCHOOL OF ORGANIC EDUCATION

This famous school, founded by Mrs. Marietta Johnson and Directed by her for more than thirty years, is open to visitors every day. It is a progressive school of the boldest type. There are no examinations, tests or grades to determine the intellectual status of pupils, nothing in the program to arouse fear in the heart of the student. There is no possible way to cheat and no incentive to do so. It is a most healthful and ideal environment for children and, because all work is done for the love of the work, it brings inner satisfaction to the student and strengthens his powers of initiative and self reliance.

If you are at all interested in the development of youth for a new and better civilization, by all means visit and investigate this school.

U. S. ALABAMA STATE APPROVED CHICKS
Barred Plymouth Rocks, Rhode Island Reds, S. C. White
Leghorns, White Rocks, Buff Orpingtons

FAIRHOPE HATCHERY

A. R. Rockwell, Owner

FAIRHOPE, ALABAMA

Griffin Motor Company

Bumper to Bumper Service

LOXLEY, ALABAMA

PHONE 1304

WHILE IN THIS AREA VISIT

San Carlos Hotel

PENSACOLA, FLORIDA

"The Pride of North West Florida"

VISIT BEAUTIFUL . . .

Malbis Plantation

On U. S. 90

(See Our Location On Map)

GREER STORES
—ARE—
GOOD NEIGHBORS

FAIRHOPE - FOLEY - BAY MINETTE

GAYFER'S

Mobile's Finest Department Store

St Emanuel Street

SEEDS

IBSEN SEED COMPANY

Ask your local dealer for Ibsens Seeds
"Seeds With a Growing Reputation"

120 Government St. Mobile, Alabama

METROPOLITAN

One of the Country's Leading Restaurants

Seafood - Steaks - Chops

MOBILE, ALABAMA

wards; west to east, read upwards.) The link of the Old Spanish Trail lying between Pensacola and Mobile passes directly across Baldwin County. Pensacola, metropolitan neighbor of Baldwin, shares with south Alabama the pageantlike historic background of a common ancient colonial heritage. One of the most modern of gulf cities today, Pensacola is known everywhere as the Romantic Gateway to Florida; also as the Annapolis of the Air (training station for navy fliers).

Westward bound from Pensacola the motorist on the Old Spanish Trail holds the right-hand pavement after crossing the viaduct in the edge of the city where the Scenic Highway through Baldwin branches to the left (see map and trail log No. 6). At 19 miles from Pensacola -- 46 from Mobile -- is the Perdido River, state and county boundary. Immediately west (part of the same river system) in Baldwin is Styx River. Unlike the river of classical legend from which it takes its name, this river allows the traveler to pass both ways at will. At 38 miles from Pensacola -- 27 from Mobile -- is intersection with Ala. 3 coming up from the gulf (see road map and trail log No. 1). West-bound motorists take right turn after viaduct, for Mobile; east-bound, take left turn over viaduct. At 44 miles from Pensacola -- 21 from Mobile -- is the junction (just north of Loxley) with Ala. 3 northbound to county seat (Bay Minette) and up-state points (see trail log No. 1). West-bound, turn left; east-bound, turn right. The span of trail between this junction and Mobile Bay is characterized by beautifully forested, rolling country.

At 50 miles from Pensacola -- 15 from Mobile -- on both sides of the highway is beautiful Malbis Plantation (see map). Visitors welcomed, stop recommended.

At 52½ miles from Pensacola -- Mobile, 12½ -- is junction with Baldwin's Scenic Highway coming up from the south and rejoining the Old Spanish Trail at this point. Old Spanish Trail motorists west-bound turn right, here; east-bound, turn left. At 53 miles from Pensacola -- 12 from Mobile -- is Old Spanish Fort (for description, see trail log No. 2). Trail junction here with US 31 (see road map and trail log No. 2) from the north. East-bound motorists leave

ing Cochrane Bridge, turn right and watch at once for next trail junction, (see above); west-bound travelers turn sharp left, descend hill to bay level and continue over famous Cochrane Bridge across Mobile Bay. For west-bound motorists at this milage point here is seen against the skyline ahead the city of Mobile, historic old city of many flags, now entering a new phase of development as one of the leading industrial and seaport cities of the gulf. Visitors to Mobile will not want to miss the world-famous Azalea Trail.

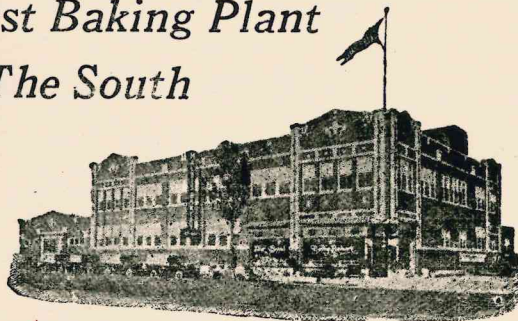
But when passing along the Old Spanish Trail in either direction remember that much that is charming in Baldwin County lies off the trail, north or south, along smooth, paved side highways. And Baldwin Countians cordially invite you to drop off the trail and visit them as you pass through.

4. THE SILVERHILL HIGHWAY (12 Miles.)

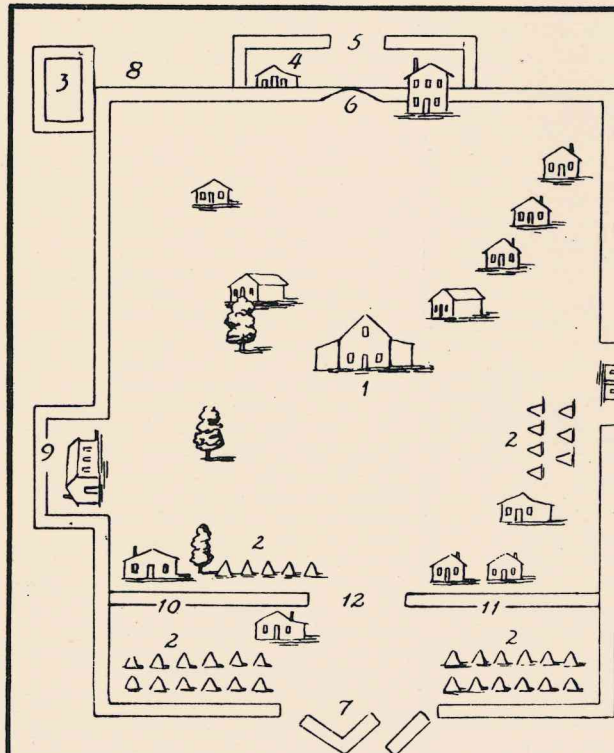
The Silverhill Highway connects the Scenic Highway (see trail log No. 6) and the Sibley Holmes Trail

Malbis Bakery

*The Finest Baking Plant
In The South*



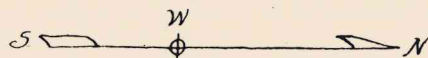
MOBILE, ALABAMA



Here is Ft. Mims as it stood on the morning of August 30, 1813.... Before nightfall of the same day it was a smoking ruin.

Locate by numbers, as follows:

1. Mims' House.
2. Tents for Garrison.
3. Blockhouse.
4. Guardhouse.
5. Western Gate (not up!).
6. This gate was shut, but a hole was cut through it by the Indians.
7. Eastern gate where Indians entered - sand that had washed in prevented its closing.
8. Pickets cut away by Indians.
9. Portholes taken by Indians.
- 10 and 11. Portholes taken by the Indians.
12. Old Gateway - open.



(The compass directions E for this diagram).

WHEN IN ROBERTSDALE STOP AT . . .

HOLLAND'S DRUG STORE

For Complete Line of Drug Sundries - Kodak Supplies and
Finishing - Magazines - Tobaccos - Fountain Service
Curb Service

J'S PLACE

Good Coffee - Doughnuts - Home Made Pies
Cigarettes - Tobaccos

E. J. ANDERSON

ROBERTSDALE, ALA.

FOR TUNG GROVES

— SEE —

BALDWIN PLANTATION

FAIRHOPE, ALABAMA

Center Of The Tung Belt

Six Miles to some of the oldest trees in America

SILVERHILL, ALA.

Welcomes You

A Thriving and Progressive Community

HOME OF THE ANNUAL BALDWIN
COUNTY FAIR

ELMER V. LOVELL

REAL ESTATE - SILVERHILL, ALA.
"The Gulf Coast Highlands" South Baldwin County
"A good investment is worth a lifetime of labor"

DINE - A - MITE

ROBERTSDALE

ALABAMA

(See Our Location On Map)

Good Floor - Good Service

(Ala. 3 - - see map and trail log No. 1). It spans a charming countryside of gently rolling hills alternating with farm lands of choicest quality. One rides now between forests, now beside beautiful and prosperous farms, an ever-varying landscape of great fascination. The trail crosses the upper reach of beautiful Fish River where it is little more than a brook. A point of interest is the State Experimental Farm, which welcomes visitors (see map); also Baldwin Plantation, a pioneer tung oil planting on a large scale (see map). For motorists on the Scenic Highway who prefer an all-paved route this highway, in connection with Ala. 3 (see map and trail log No. 1) is recommended as a Fairhope-Robertsdale-Foley link. The highway passes directly through the center of Silverhill.

SILVERHILL

The metropolis of the region traversed by the Silverhill Highway is the incorporated town of Silverhill. The town provides all conveniences of modern life. First-class educational opportunities are available, and a well-stocked library is maintained. In the center of the town are four squares, beautifully planted with trees and shrubs. East of town, beside the highway (north side), is a well-kept woodland park with a sparkling brook running through it. In this park (the Oscar Johnson Memorial Park) an annual mid-summer picnic is held that invites visitors from everywhere.

This modern and progressive community is the scene of the Baldwin County Fair, which is held here annually in the fall of the year. The assembled exhibits are shown under the auspices of the Baldwin County Fair Association, and for anyone who wishes a comprehensive survey of Baldwin County's agricultural possibilities a visit to the fair is well worth while. Each year the exhibits draw throngs of visitors from all Baldwin, as well as from outside points. In particular, the fair is a testimony to the great civic energy and cooperative enterprise of the people who make up this thriving community.

Silverhill churches cordially welcome visitors to their services and social activities. The Silverhill Chamber of Commerce invites inquiries from those interested in

Baldwin County's farming possibilities.

5. BAY MINETTE TO LITTLE RIVER

(35 Miles)

Those who enjoy an excursion through beautiful and historic old country will find the drive northward from Bay Minette through Stockton to Little River a pleasure they cannot well afford to miss. Leaving Bay Minette via Hand Avenue (see street map of Bay Minette) the highway runs over smooth pavement to Stockton (10 miles).

Stockton was once among the largest of Baldwin's towns, a riverport for a large direct overseas trade to and from Old World ports. The Mobile-Montgomery stage line ran directly through the town. Beautiful old homes and estates, lovely gardens and large shade trees, spaciousness and leisure and culture are the charming characteristics which Stockton has evolved from her romantic, colorful past. Near Stockton is the famous Indian Mound referred to on the face of the road map (estimated 6000 years old; compare age of the pyramids of Egypt). Boat excursion parties to this mound can be arranged (inquire for Mr. Taylor at veneer mill on the waterfront). For a beautiful short side trip through really charming farm country ask locally to be directed to "Stockton Run-around." It is the loop drive shown on road map in direction of Melton's Landing. Visit Melton's Landing if possible; exceedingly beautiful.

Northward bound from Stockton the motorist is on all-weather highway surfaced with packed gravel and clay, smooth and fast. The highway winds through heavily forested hill country of extreme beauty. At 12 miles from Stockton is Tensaw, an essential stop. Information at postoffice (in country store beside the highway). Of particular interest is the old English house, a colonial mansion-house (Southern type) of exquisite design, and of such antiquity that even the gigantic oaks which line the old avenue leading up to it are tottering and broken with age. Notice especially (by permission at the postoffice) the exquisitely chaste and pure lines of the old hand-wrought black walnut staircase in the hall, a creation of slave craftsmen of long ago. The Ten-

Baldwin County Post No. 99

AMERICAN LEGION

Owens its Hall at Foley, Ala., County wide membership above 200, Dedicated to a complete Legion Program of Service to Community, State and Nation.

Operates American Legion Club at Fairhope.

(Look for location of Club House on Map of Fairhope)

(Look for location of Legion Hall on Map of Foley)

Foley has a complete Chapter of the American Red Cross prepared for all emergencies.

Baldwin County Building & Loan Ass'n.

"Where Savings Are Safe"

Robertsdale, Alabama

We never have paid less than 4¼%.

Loans - General Insurance - Bonds

Assistance gladly given new property owners

You are cordially invited to attend the . . .

Annual Baldwin County Fishing Rodeo

AUGUST 11th and 12th

For full particulars write Max Griffin, Sec'y.

BALDWIN COUNTY FISHING RODEO ASS'N.

Foley, Alabama

(See page 44 for map of Rodeo Fishing Grounds)

Fairhope Answers Public Revenue Questions

Need the collection of public revenue for the creation of public wealth and the protection of the public welfare burden and restrict the production of private wealth?

The Single Tax Colonists at Fairhope for more than forty-three years have secured public revenue for their community needs from a source that has lightened the burden on all productive activities of citizens and commercial and industrial institutions.

Occupants of the lands of the Fairhope Single Tax Corporation pay a charge which is based on the value of the public service made available to the site and the inherent properties with which nature has endowed it.

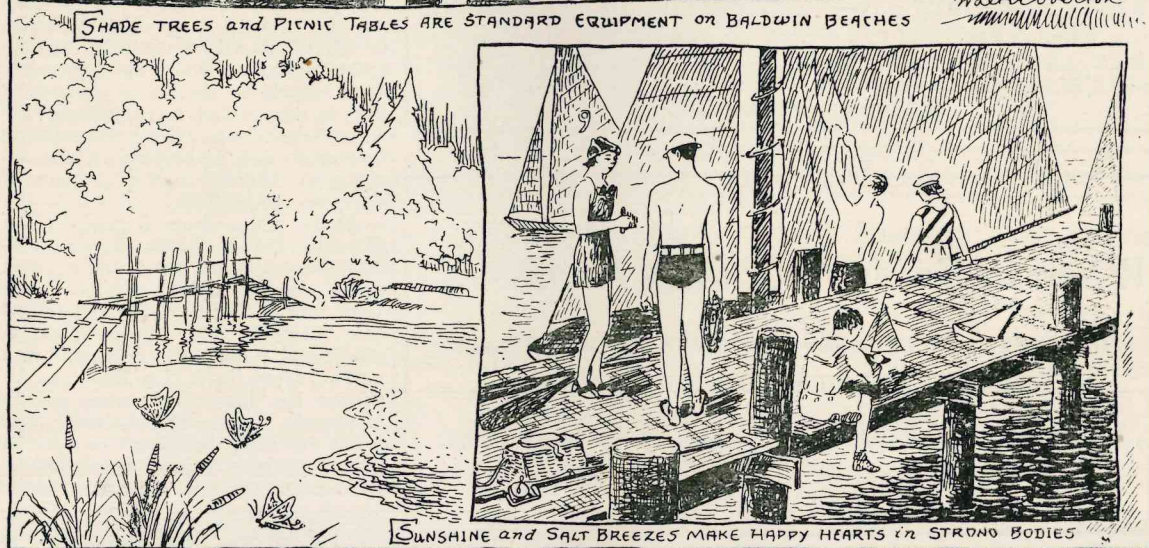
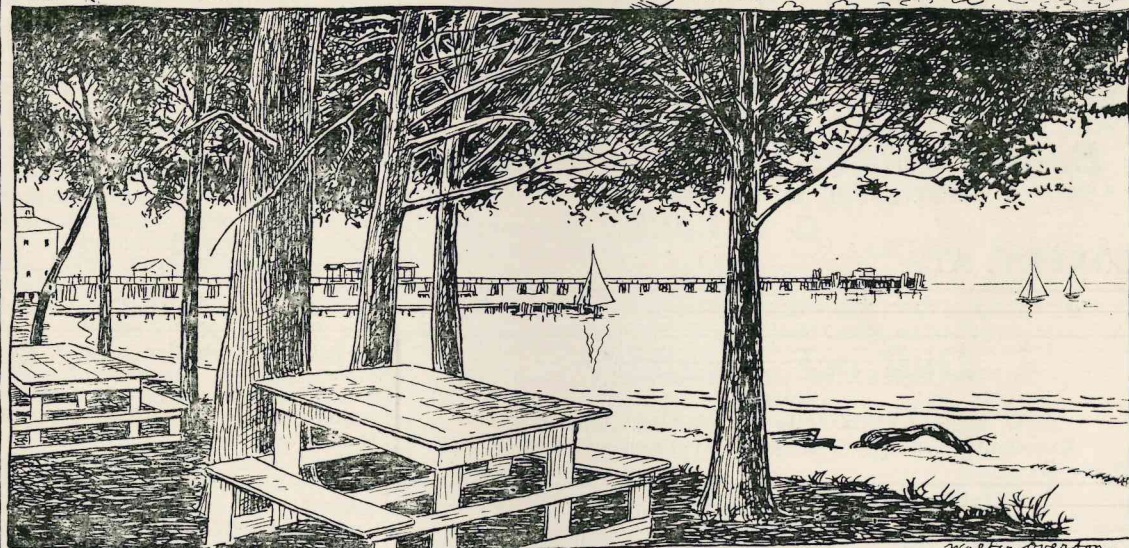
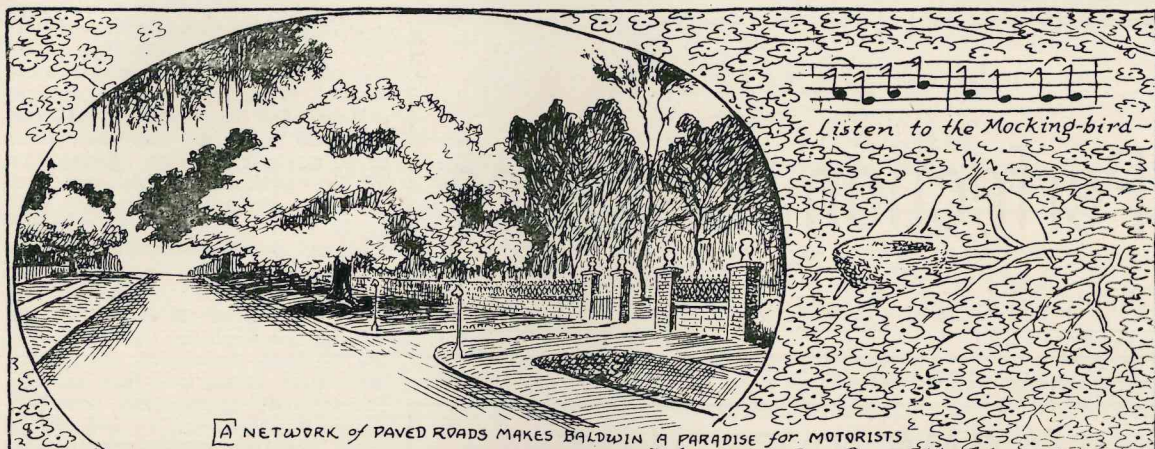
These charges insure the public of adequate funds to pay the public expenses and enable all to share equally the bounties of nature.

Since none can benefit from land except through its use, all idle land is available to the newcomer without purchase cost and the growth of the community is not restricted by speculation in land.

Colony citizens, having no incentive to invest in sites for the collection of the social values sure to result from the growth of the community, invest their available capital in better improvements requiring greater employment of labor and use of labor produced materials.

Fairhope Single Tax Corporation

Fairhope, Alabama



M. S. DREITZLER

Perfection Nurseries

Phone 2704

FOLEY, ALABAMA

I SAVE OVER HALF

My Insurance Money by taking a Policy with the

Baldwin Mutual Insurance Co.

WRITE FOR LOW RATES TO

G. W. LACEY, Secretary

LOXLEY, ALA.

DuBrock Laundry

—AND—

NEW CLEANING AND PRESSING SERVICE

Excellent Cleaning, Pressing and Laundry Service

Phone 88

Fairhope, Alabama

Foley Mortuary

Funeral Directing

DAY AND NIGHT SERVICE

V. C. Christensen

Robertsdale Mortuary

Ambulance Service

PHONE 4610

Virgil Christensen

Licensed Embalmers

When in Baldwin County Read . . .

THE FOLEY ONLOOKER - BALDWIN NEWS-HERALD

FAIRHOPE COURIER - BALDWIN TIMES

. for news of affairs and events in Baldwin County.

saw Baptist Church (built in 1840) will be found interesting. By consulting road map, it is easily found. With rare aptness of taste it is placed on a hilltop so that from all sides of approach it is lifted against the sky. Every line of the building, inside and out, is architecturally designed with great skill to contribute to and continue the pattern of exaltation and upward lift. A gallery for slaves (entrance inside, at the sides) speaks of old days. At the left of the highway in Tensaw is the building belonging to one of the oldest Masonic lodges in Alabama (steel sign marker, now faded and weatherworn - look sharply). The first cotton gin in Alabama was set up in Tensaw, and here also was opened the first school in the state.

One mile north of the Tensaw postoffice is a left-hand turn into a lane (marked by a sign; but the sign faces north) that leads to Fort Mims (see map). Road surface can be trusted in dry weather. At about 1 mile, where the trail forks, hold straight ahead on the left-hand fork of trail. The farm house at Boat Yard Lake (about 3½ miles) marks road's end. Ask the farmer, Mr. Franklin Paul, to point out location of fort site, old cemetery, monument. The Fort Mims massacre was a gruesome incident of the War of 1812, British agents having incited the Indians to uprisings all along the western frontier in order to force dispersal of American troop concentrations (for protecting settlers in the forests). You may wander freely over the locality, or Mr. Paul will cheerfully act as guide. But as he must leave his farm work to do so, a voluntary fee is suggested as a fitting acknowledgement. Very interesting souvenirs are picked up in the vicinity of the old fort (for plan of fort, see page 23).

At 13 miles from Tensaw (Bay Minette 35) is Little River, Alabama, located on the river of that same name. Near Little River (see map) William Weatherford (the famous Red Eagle of song, story and poem) lies buried. Ask at the store in Little River to be shown the lane that turns off to leftwards from the highway and leads towards the location of the grave. Once again, remember - pick a dry spell! Bear straight ahead along the lane to William-son's Store. You are now about

one mile from the grave. Consult map, and ask at store about road condition ahead, through the woods. Under varying weather conditions, either of the two dotted-line trails may be the better. If you like walking you may wish to walk the remaining mile from the store through the woods to the grave-side; if not, proceed in car (if so recommended at store). The trail divides and rejoins often enough, but you will shortly arrive at schoolhouse and church settlement. The farm house of Henry Sanders is just at hand. He will guide you the short remaining distance (tip suggested). In such a remote and peaceful spot now rest the remains of the Indian chieftain who in life trod a path of heartbreak and sorrow. Half white, half Indian; gifted, gallant and handsome, he lived in sombre tragedy; torn in agony by his life's two loyalties and the impossibility of being true to both. His desperate efforts to avert the Fort Mims massacre, his sudden stoical appearance in Jackson's camp afterwards to assume personal blame (in order to bring all vengeance on his own head, and so prevent further bloodshed and ill will) present elements of tragedy that are classic in proportion and intensity. He was strongly blamed by popular opinion at the time of the massacre, but later and more complete knowledge has altered the judgement. The Baldwin County Historical Society has marked the grave with a cairn of native stone and a marble tablet.

See road map for location, across the Little River bridge, of remains of Andrew Jackson's military bridge (historical note on map). Walk up the river bank (far side), turn when above the island, and look back (downstream). It is possible to gaze at the aged, gray timbers a long time without seeing them unless you know where they are. You are suddenly aware of them buried in the end of the island, timber to timber, hand-hewn and massive, like the lengthwise cross-section of a causeway. Red earth from the hills packed against the sand of the river (where it would not naturally be) is the clue. Then you see that the whole little island is a formation that has grown up behind the old bridge embankment. But here is one for you: Can you spy out on the old tree back in the forest the famous 3-notch blaze that the Man of En-

SMITH'S BAKERY

Makers of
HOLSUM BREAD

WHEN IN FOLEY STOP AT . . .

CHILDRESS MARKET

Best Meats and Groceries

FOLEY, ALA.

PHONE 3110

Electricity is Available in Baldwin County

AT REASONABLE RATES

Riviera Utilities Corp.

Phone 3310

Office; Foley, Ala.

— WHEN IN FOLEY GET YOUR SOUVENIRS AT —

DAVIS 5c & 10c STORE

A COMPLETE LINE

Mrs. J. R. Davis

Phone: Foley 106

Hoover Furniture Company

Complete Home Outfitters - Easy Terms
FOLEY, ALABAMA

Steigerwald

Tailor and Cleaner
Foley, Ala.

Doering Tire Service

Foley, Ala.
Phone 404

TROYER FUNERAL HOME

AMBULANCE - LADY ATTENDANT - PHONE 7611
Foley, Alabama

We Service The Brown-Service Funeral Policies
EMORY JOHNSON - SILVERHILL Representative

SPEND YOUR VACATION AT. . .

EDGEWATER LODGE

Bathing - Boating - Fishing - Tennis - Boats for hire

Lillian, Alabama

Skiff with each cottage - Modern Conveniences

Paul Haupt
Vice-PresidentAlfred M. Neumann
CashierL. Lindorfer
President

Henry W. Gebert, Ass't. Cashier

State Bank of Elberta

ELBERTA, ALABAMA

A. PERSKE

ELBERTA, ALABAMA

BEER AND ALE OF ALL KINDS

Cigars - Cigarettes - Tobacco - Drop in and refresh yourself
GASOLINE AND OILS

WHEN IN FOLEY STOP AT . . .

GEORGE HOLK'S

Fancy Groceries - Meats

Purina Feeds - Shoes

Foley Lions Club

Cordially invite all members of the Lions International and their friends to participate in the natural beauties of Baldwin County and enjoy the glorious surf-bathing in the Gulf of Mexico to which Foley is the open gateway.

FOLEY VARIETY STORE

Souvenirs and Cards of all Kinds

Foley, Alabama

CROSBY'S DRUG STORE

FOLEY, ALA.

TOURIST INFORMATION

Fountain and Curb Service - Fishing Tackle and Kodak Supplies

Look For Us On The Corner at the Intersection of the
Highways In Foley

ergy used for marking his personal highway system through the wilds of the Southern forests? The river bank affords a delightful and beautiful picnic spot.

Returning through Stockton from Little River, a pleasant drive may be had by turning left in Stockton (see road map, and inquire locally for proper turn-off) on the Stockton-Rabun-Perdido highway and coming down to Bay Minette on Ala. 3 (US 31; see trail log No. 1). The Stockton-Rabun-Perdido road (good graded clay surface) is partly over the old stage coach road, partly along Andrew Jackson's famous 3-notch trail. A sharp eye may spy out some of these old 3-notch blazes on the trees along the trail (eastern section). Hilltop points on the trail reveal beautiful vistas south-westwards towards Mobile Bay across many miles of country that rolls down hill by hill to the water. If you enjoy climbing, pause at the fire tower for superlative views in all directions.

Or you may prefer to return from Stockton towards Bay Minette over the old Stockton-Bromley link of the stage line. (See map, and ask in Stockton to be shown proper turn-off). Shortly after crossing the bridges that span the creeks (see road map), turn left where road forks and come back onto the pavement north of Bay Minette. This affords a beautiful short woodland drive over good graded clay. The cement bridges over the creeks are irregular in surface and slightly alarming in appearance, but are strong and quite safe if driven at reasonable speed.

6. THE SCENIC HIGHWAY BETWEEN PENSACOLA AND MOBILE

(77 Miles)

(Note: Driving east to west, read downwards; west to east, read upwards. Consult road map for Scenic Highway turn southward from US 90 when leaving Pensacola westbound. It is easy to miss the turn unless care is taken.) The Scenic Highway skirts the bays and passes across the river region which together give Baldwin County the name "Fisherman's Paradise." The trails which lead to the Gulf of Mexico, to the state and national parks and to old Fort Morgan, lead off from it. At 15 miles from Pensacola - - Mobile

62 -- is Lillian Bridge, over beautiful Perdido Bay. (Toll bridge; 25 cents for car and passengers, 40 cents for car with trailer.) On the Alabama side the resort village of Lillian offers unusual attractions to vacationists. Good fishing, swimming, boating; cottages and all accommodations. Free trailer space on bayshore. very beautiful location. Four miles west of Lillian is the junction for Perdido Beach Highway (see map). At 22 miles from Pensacola -- Mobile 55 -- is the junction with Josephine Highway (see map and watch for road sign). Good graded clay surface leads 6 miles to Perdido Bay. Very beautiful. Good swimming and picnicking near postoffice (see map). Summer home of Admiral Raphael Semmes, Confederate naval hero, was located here.

At 25 miles from Pensacola -- Mobile 52 -- is Elberta, a prosperous village, modern and progressive. From its founding in 1905 Elberta has played an increasingly important part in the development of the county. Highway to beautiful Peterson's Point departs from Elberta. See map for location of Foley Springs, a roadside beauty spot, between Elberta and Foley.

FOLEY

(Pensacola 31 Mi. -- Mobile 46 Mi.)

Foley is located in the heart of south Baldwin where the Scenic Highway crosses the Sibley Holmes Trail (Ala. 3; see map, and trail log No. 1). Like the ribs of a fan the trails that lead to the glorious, nationally-known vacationland of the Alabama gulf coast spread south, east and west from Foley; while back of Foley, and all around, lie the richest and most varied farm lands of the entire gulf region. The roll of the surf on the beach, the odor of orange blossoms on the night air, the song of the mocking bird and the lure of the speckled beauty in creek and river cast their magic spell over Foley -- "The Gateway to the Gulf" -- where nature smiles the year 'round, and you know without being told that life is worth living.

The town takes its name from the late John Burton Foley, a prominent Chicago businessman and philanthropist who early saw the possibilities of this region and assisted greatly in their develop-

Raw Lands - Farm Homes - Water-Front Property

HARRY O. TINGUE

REAL ESTATE BROKER
FOLEY, ALABAMA

Houses -- Lots -- Rentals

FARMERS & MERCHANTS BANK

FOLEY, ALABAMA



Friendly Banking Service

DEPOSITORY STATE OF ALABAMA

STACEY'S DRUG STORE

Next To The Foley Hotel

Everything for the Beach - Sun Tan Oil - Sun Glasses
Sun Hats - Tourist Information

FOLEY, ALABAMA

THE DREIS IMPROVEMENT COMPANY

Foley, Alabama

Offer about 30 lots for sale at low prices to those who will build. Gulf Shores on the Gulf of Mexico.

Each lot accessible by automobile by improved road. Accessible to water and electric light service.

EBERT'S CAFE

A GOOD PLACE TO EAT

— OPEN ALL NIGHT —

Foley, Alabama

"BALDWIN COUNTY KNOWS COONEY —

COONEY KNOWS BALDWIN COUNTY"

P. J. COONEY REALTY CO.

FOLEY, ALABAMA
HOMES

FARM LANDS & GROVES
TOWN LOTS

COOK'S MARKET AND GROCERY

Foley, Alabama

Phone 7310

Fancy and Staple Groceries

Western and Native Meats

"Service and Quality"

C. G. Cook, Prop.

F O L E Y

"Gateway To Alabama's Gulf Coast"

Foley is acclaimed as one of Alabama's most up-to-date, modern and progressive little cities. The center of the State's playground and resort section, and the heart of the heaviest truck crop producing section in Alabama, Foley offers much to either vacationist or persons seeking a permanent residence in the South.

Ideal climate, a cooling Gulf breeze, moderate winters and every attraction offered by Nature are each year bringing new citizens to Foley.

Here you find a new and different kind of friendly welcome and the opportunity to aid in development of an area that has already gained nation-wide attention.

Foley has accredited schools, recognized by the Southern Association of Colleges, churches of every denomination, paved streets and paved highways connecting with all nearby cities, a golf course and airport nearby, bus, railroad and telegraph facilities.

FRANK V. BARCHARD, MAYOR

VIOLA HOOK, CLERK

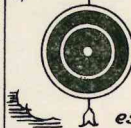
COUNCILMEN: W. S. BEESLEY, C. J. EBERT, D. H. GAAR,

MAXWELL JEWELL, E. F. SANDERS

You'll Like Foley And Vicinity!

STREET MAP of FOLEY ALABAMA

Showing location of
principal points of inter-
est inside the town limits.



SATSUMA

ST.

PERSIMMON ST

BERRY ST.

FIG ST.

FIG

CAMPHOR ST.

CAMPHOR

SECTION ST.

SECTION

BEGONIA ST.

MARIGOLD AVE.

CY PRESS

ORCHID AVE.

BAY ST

POPLAR ST

MAGNOLIA AVE.

ST.

ROSE AVE.

VIOLET AVE

JESSA-MINE AVE.

LAUREL AVE.

BALL
PARK

ORANGE AVE.

MYRTLE AVE.

VERBENA AVE.

ROOSEVELT AVE.

PEDIGO AVE.

MS KENZIE ST.

ALSTON ST.

PINE ST.

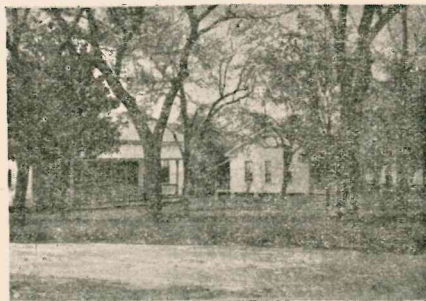
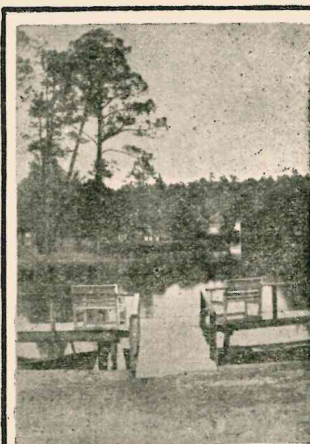
OAK ST.

1. TOWN HALL & LIBRARY
2. POST OFFICE
3. FOLEY PARK
4. AM. LEGION HALL

5. NATL. GRD. ARMORY
6. R.R. STATION
7. POSTAL TEL. GRPH

(NOTICE: THIS MAP IS DRAWN APPROXIMATELY, BUT NOT EXACTLY, TO SCALE.)
CIRCLED LETTERS INDICATE
HIGHWAY CONNECTIONS TO
NORTH, SOUTH, EAST, WEST.

8. EPISCOPAL CHURCH
9. BAPTIST CHURCH
10. METHODIST CHURCH
11. LUTHERAN CHURCH
12. PRESBYTERIAN CH.
13. PUBLIC SCHOOL
14. TO CATHOLIC CHURCH



MAGNOLIA PLAZA
"FISHERMAN'S PARADISE"
MAGNOLIA SPRINGS, ALA.

The Year Round Vacation Spot of Alabama

Two and Three Bedroom Cottages with large living room, dining room, kitchen and bath. All beds have Innerspring Mattress. Completely furnished including linens, silver, cooking utensils and a radio

— RATES REASONABLE —

Hunting, Swimming, Golf, Koka Ball, Tennis

ARTHUR HOLK & SON

CALL OR WRITE - MAGNOLIA SPRINGS, ALA.

PLAY GOLF

DAILY FEE COURSE - NINE HOLES - 2900 YARDS
ATTRACTIVE AND WELL KEPT FAIRWAYS

— Playing Fees —

9 or 18 Holes 25c

Card Good For Ten Games (Transferable) \$1.50

VISITORS WELCOME

MAGNOLIA SPRINGS and FOLEY COUNTRY CLUB

Sunset Road - 3½ Miles West of Foley

(see map)

E. Y. HORDER, Owner, Magnolia Springs, Ala.

CLAUDE PETEET

REAL ESTATE - Anything in Baldwin County, Alabama
LANDS, IMPROVED FARMS, FRUIT AND TRUCK LANDS
ESPECIALLY ATTRACTIVE WATERFRONT PROPERTY
— River, Bay, Canal, Gulf —
Foley, Alabama

Magnolia Service Station

Sandwiches - Cold Drinks of all

Kinds - Gas and Oil

Magnolia Springs, Alabama

MOORE BROS.

General Merchandise

Fresh Meats, Gas, Oil, Fishing

Tackle, Tourist Information

Magnolia Springs, Alabama

ment. It is an incorporated, fast-growing community with paved streets and every convenience of modern life. The water supply is pure and unlimited and the sanitary provisions are of the highest. A beautiful wooded park, donated by Mr. Foley, lies adjacent to the center of town (see street map). A modern country club with an exceedingly sporting golf course in a beautiful woodland setting adds to the recreational possibilities.

Foley is aided in its maintenance of high civic standards by the devotion and activity of many splendid club organizations. Among others, the Foley Lions Club is untiring in its zeal for the welfare and advancement of the community. The Baldwin County Post No. 99 of the American Legion (see street map) is always active in community betterment plans. A National Guard armory houses a motorized division headquarters unit of the National Guard. A first-class consolidated school system and a public library are maintained, and churches of all denominations cordially invite visitors to participate in their services and social activities. Paved highways lead outwards from Foley in every direction to connect with national highway systems, and a thoroughly modern flying field is located on the highway south of town. Hotel accommodations are available and first-class cottage camps are found in the environs. An excellent weekly newspaper, The Onlooker, serves the community.

In connection with the Foley Lions Club and the Wildlife Conservation Association, the Baldwin County Chapter of the Izaak Walton League (headquarters in Foley) conducts an outstanding annual fishing rodeo (see page 44). A most able committee of prominent citizens is in charge. The dates for 1939 are August 11th and 12th. Inquiries should be addressed to Max Griffin, secretary, Foley, Alabama.

Foley is the southern terminus of the railroad branch line over which more than 5,000 carloads of farm produce were moved to outside markets last year. The agricultural products of the Foley area are highly varied and the growing season is phenomenally long, with abundant rainfall. In spite of recent rapid development there are both raw and improved lands still available, and anyone considering

the purchase of farm land in the South will do well to make inquiry in Foley.

The Scenic Highway passes directly through the shopping and business district. Foley people are cheerfully glad at all times to welcome visiting motorists and tourists, and are always ready to supply information regarding farm lands and vacation opportunities in the Foley area. Ask them. If you can't come now, write them. Any Foley advertiser listed in this book will be happy to answer your letter.

Between Foley and Magnolia Springs the Scenic Highway crosses Horder Brook, with its crystal clear waters. Notice (on both sides of the highway) Horder Orchard, a large plantation of satsuma oranges; also (south side of highway) entrance to Magnolia Springs-Foley Country Club. At 5½ miles west of Foley is Magnolia Springs. At the time of going to press (May, 1939) the span of highway between Foley and Yupon Farms—see map—is in process of paving; but completion is expected soon.

MAGNOLIA SPRINGS

(Pensacola 36½ Mi. -
Mobile 40½ Mi.)

For many years Magnolia Springs has been known as a resort village (winter and summer). It is the center for fishing and pleasure excursions along beautiful Magnolia River into Weeks' and Mobile Bays. The springs from which the village takes its name are picturesque in the extreme. The bridge is a splendid vantage point from which to view the river and there is ample picnic space nearby. The visitor will find the best of cottage, camp and hotel accommodations awaiting him, with every facility at hand for fishing, hunting, etc. The beautiful estates which make up the community lie mostly along the river banks and are of extreme beauty. The garish, pageantlike display of azaleas for which its lawns are famous have caused Magnolia Springs to be known far and near as "The Azalea Village". Visit recommended. Ask at store or postoffice for further information.

Between Magnolia Springs and Fish River, at Yupon Farms (largest hog raising farm in the South),

Aeromotor Windmills — Westco Pumps

Arthur Holk & Son

MAGNOLIA SPRINGS, ALABAMA

General Contractor

BUILDINGS OF EVERY DESCRIPTION

PLUMBING - HEATING

Air Conditioning

"WHEN BETTER BUILDINGS ARE BUILT —

HOLK BUILDS THEM"

SANDYLAND

ONE OF BALDWIN COUNTY'S MODERN COTTAGE CAMPS

New Stucco Cottages, Completely Furnished
Hotel Accommodations With or Without Meals
Private Showers - Fishing Facilities

J. W. SANDLIN AND WIFE

—Owners—

Magnolia Springs, Alabama

Phone Foley 813

(Look for our location on map)

DADE'S GARAGE

Battles Wharf, Alabama

WOCO-PEP TIOLENE AND REPAIRING

Phone 33 R

BATTLES HOTEL

—AT—

Battles Wharf, Alabama

Everything to Make Your Vacation Complete

NEW BEACH HOTEL**"THE HOUSE OF WELCOME"**

Located on the Eastern Shore of Mobile Bay
 (See location on map) Easily accessible from any point
 Chicken and Sea Food Dinners a Specialty - Excellent Bathing
 and Fishing - For Further Information Address
 Miss Grace F. Hutchings, Mgr. - Battles Wharf, Ala.

**For Good Fresh and Salt Water Fishing
 The Year Round
 Come To**

STENZEL'S FISH CAMP

ON BEAUTIFUL FISH RIVER
 CABINS—SKIFFS
 OUTBOARD MOTORS
 AND POWER BOATS
 BAIT AND TACKLE

10 Miles Southeast from Fairhope at Marlow Ferry

**Burkel's Magnolia Beach
 Amusement Pavilion**

Charles Burkel & Son, Owners and Operators

Fairhope, Ala., on Beautiful Mobile Bay

(The American Riviera)

SEA FOODS and CHICKEN DINNERS OUR SPECIALTY

Refreshments Served - Arrangements for Parties Made

Come in and see the Largest Privately-Owned Historical
 Collection in South Alabama

NEW GOVERNORS CLUB

On Week's Bay at the Mouth of Fish River

HOTEL ACCOMMODATIONS - COTTAGES - BOATS
 BAIT AND GUIDES

GOOD FISHING THE YEAR 'ROUND

Mr. and Mrs. R. C. Erdmann, Prop. Phone Foley 830

P. O. MAGNOLIA SPRINGS, ALA.

(Look for our location on map)

GULF CREST COTTAGES

Near the Gulf of Mexico - Trailer Camp
 Modern Cottages - Electric Lights - Running Water - Showers
 Sandwiches and All Kinds of Cold Drinks
 Good Fishing and Surf Bathing Convenient
 Billie Megahhey, prop.

a most interesting experiment in scientific farming methods is in progress. Doctors of veterinary agree that Yupon Farms swine sanitation is a standard for profitable and healthy hog raising. Field crops, orchard crops and thoroughbred livestock also featured. This beautiful and interesting estate receives an endless stream of callers from far and near. Visitors are welcomed by the management.

See road map for side trail to upper end of Weeks' Bay. Good fishing, guides, boats, etc. Beautiful picnic spot. At Fish River the crossing is by ferry. Sound horn. Crossing fee is 25 cents. Extremely beautiful views of river during crossing.

Between Fish River and Point Clear (good graded clay highway—see map) follow clearly marked road signs through lovely countryside of alternating old-time farms and pine forests. A fascinating side trip may be made to beautiful old Marlow on Fish River (see map). Eastbound motorists, watch map for turn-off from pavement (left turn, at store in Zundel's—Mobile 28 mi.). Behind the chapel at Zundel's is the last resting place of some fifteen score or more of those who so long ago gave their lives in defense of the Stars and Bars. Devoted friends have cherished the spot, and to them it is known simply as Confederate Rest.

At 50 miles from Pensacola—Mobile 27—is famous Point Clear. This superlatively beautiful spot was in old days the social center for the entire Deep South. Magnificent old southern hostelries catered to aristocrats who gathered from all Dixie to make merry in a blaze of fashion and splendor. Good views of lower Mobile Bay from the wharf beside the hotel. One mile north of Point Clear (see map) is Battle's Wharf, famous old bayfront town of the steamboat days. Excellent hotels, good fishing, crabbing and swimming. Visit to waterfront recommended.

At 53 miles from Pensacola—Mobile 24—is Fairhope "on Mobile Bay". For description of Fairhope see trail log No. 2. At the double bend in the Scenic Highway, near the southern limit of Fairhope, on the bayshore, is the American Legion Club house (see Fairhope street map). At Burkel's Pavilion (beside this highway, at Magnolia Beach, in Fairhope) is a most interesting private museum of Indian

relics, etc. Admission free; worth seeing.

Motorists on the Scenic Highway should use trail log No. 2 for their trail between Fairhope and Old Spanish Fort; trail log No. 3 for trail between Old Spanish Fort and Mobile, for which span of trail the Scenic Highway has already joined the Old Spanish Trail (see map) to cross Mobile Bay on beautiful Cochrane Bridge.

7. THE BLAKELEY TRAIL

(About 9 Miles)

The Blakeley Trail leaves pavement at a point on US 31 just south of the triangle that marks the trail junction near Stapleton (see road map). Look for sign marker. From this point the graded clay road winds along through the forests, but is easily followed to Bromley. Continue straight ahead across the bridge at Bromley. Beyond the creek valley and in the hills again, begin watching for left-hand trail that leads off to Blakeley (marked). Turn left. You are now following (all the way to Blakeley the route of the old stage line that once led out from Blakeley to points north and east. The trail, just a woods road, winds about over hill and valley, dividing and rejoining; but the publishers of this guide have blazed the best route for you by white-washing the tree trunks. A good deal of gear shifting and careful driving is necessary. However there should be no serious difficulties. Follow the whitewashed trail several miles to the point where it passes through a gap in the old trenches that were a part of the fortifications defending Blakeley during the War between the States. At this point the trail marks cease, but you are already at Blakeley. A left turn after passing the trench takes you directly down to the negro cabin shown in the illustration on page 9. You may wish to park under the large oak just beyond this cabin and walk the remaining distance to the water's edge (about $\frac{1}{2}$ mile—it can be driven, by an alert and careful driver, if necessary). When you make the righthand turn beyond the oak you enter the head of Washington Avenue, once the busy main thoroughfare of Blakeley; now only a silent avenue of old oaks.

"A prosperous city, with factories, hotels, shipping and beautiful

GULF SHORES PLAYGROUND

Meals - Soft Drinks - Modern Cabins by Day or Week
Salt Surf Bathing - Fresh Water Fishing

Geo. E. Fuller, Owner

See Old Spanish Fort Tourist Village ad on Page 15

(Look for our location on map)



THE GOLDENROD STUDIO is ready now to offer the public a personal tour and guide service for Baldwin County that covers all parts of the county and every recreational opportunity. Included in this service are half-day and all-day tours to any of the historic or scenic points of interest described or referred to in this guide book, as well as other delightful pleasure and sight-seeing trips by land or water, deep-sea excursions and fishing trips into the gulf.

A guide who knows all the county trails will go with you, drive your car carefully and safely for you if you wish, point out and describe objects of interest along the trail. For excursions by water he will charter suitable boats, make all arrangements in advance, accompany you, if you wish, to act as guide en route and at the destination. For either land or water tours he will arrange for box lunches or shore dinners, taking complete responsibility for your comfort and safety.

The Studio knows just the right place to enjoy a delicious Creole dinner in comfort beside the bay and just the excursion to combine the scenery and "atmosphere" of old times to go with it; knows just where to find the real thing in Southern style chicken dinners. The Studio knows what is interesting and picturesque in the county and how to present it.

This complete service is available for individuals, for small parties or for groups of any size. It is in the hands of experienced and expert travel people, and you will find it informal, dignified, unobtrusive; competent, sophisticated, inexpensive. Free souvenir maps, designed at the studio and having the route of the excursion of your choice marked on it, are a feature of the service.

Phone Foley 841 from anywhere in the county; or, if you prefer, write the studio management and a representative will call on you. Use the address given on the title page of this guide book. For a pleasant experience you won't forget, plan it with

The Studio Touring and Guide Service

MAGNOLIA SPRINGS, ALA.

AAA

Attention of tourists is called to the fact that a full time tourist bureau of the American Automobile Association is maintained at 132 North Royal Street in Mobile, Telephone Dexter 266. You are invited to participate in the services of this bureau which is ready at all times to assist with information and otherwise in your enjoyment of

BEAUTIFUL BALDWIN COUNTY
ALABAMA MOTORISTS ASSOCIATION

A SUMMARY OF ALABAMA HUNTING AND FISHING LAWS AS THEY APPLY TO BALDWIN COUNTY

Note: The following is a condensation of the hunting and fishing laws governing the southern part of Alabama as of March, 1939. It is not an official summary, and no responsibility can be taken by the publishers of this booklet for errors, or for changes in the law which may occur or may have occurred. It is believed, however, as far as can be reasonably ascertained, to be correct. Advertisers in this booklet, as well as all hunting and fishing guides, will gladly furnish information, and inquiries may be addressed to Dr. Walter B. Jones, Commissioner, Alabama Department of Conservation, Montgomery, Alabama.

HUNTING

Open Seasons	Both Dates Inclusive
DEER (antlered bucks only) 1 a day, 3 a season	Nov. 20-Dec. 31
SQUIRRELS, 10 a day	Oct. 15-Jan. 15
BEARS, FOXES, O'POSSUMS and RACCOONS (hunted as game)	Oct. 1-Jan. 31
QUAIL, 12 a day	Nov. 20-Feb. 20
TURKEYS, 1 a day, 5 a season	Nov. 20-Dec. 31 Mar. 15-Apr. 15
PHEASANTS, 2 a day	Nov. 20-Dec. 31
RABBITS	Season open all the year and no bag limit.
GROUSE	No open season.
MIGRATORY BIRDS	(State regulations conform to Federal regulations.)
DOVES, 15 a day	Nov. 20-Jan. 31
DUCKS, 10 a day in aggregate of all species; GEESE and BRANT, 5 a day in aggregate; SNIPE, 15 a day and COOT, 25 a day; bag limit to include total of 3 RUDDY DUCKS, BUFFLE HEADS, CANVASBACKS, REDHEADS, or 3 in aggregate of the four species.	Nov. 15-Dec. 29
RAILS and GALLINULES (except Coot):	
SORA, 15 a day; others 15 a day in aggregate	Nov. 20-Jan. 31
WOODCOCK, no open season.	

HUNTING LICENSES: Non-resident (annual) \$25.00. Non-resident (trip) \$5.00. (Trip License allows for seven consecutive days, but hunting on Sunday forbidden by local county law.) Resident: State, \$3.00; County, \$1.00. Children under 14 years of age not required to have license. Written permission required for hunting protected birds and animals on lands of another.

FISHING

GAME FISH: Large and small mouth bass, commonly called trout or green trout; white lake bass, commonly called stripped bass; bream, including blue-gill, copper-nosed and red belly; crappie, white perch or calico bass; rock bass or goggle-eye; wall-eyed pike, jack salmon or pickerel; brook trout.

NON-GAME FISH: Drum, buffalo, channel catfish and all members of the catfish family; all members of the sucker family; all other species of fish not classified as game fish.

CREEL LIMIT OR MAXIMUM DAILY CATCH: Not more than 10 bass, 15 crappie, or white perch; 15 rock bass or goggle eye; 15 white lake bass; 25 bream in aggregate of all species, and not more than 35 in aggregate of all kinds of game fish.

SIZE LIMITS ON GAME FISH: Bass, not under 11 inches; bream and rock bass (goggle-eye), not under 4½ inches; white lake bass, not under 10 inches; crappie and white perch, including calico bass, not under 8 inches; wall-eyed pike, jack salmon or pickerel, not under 12 inches. All measurements from tip of nose to fork of tail.

SALE OF GAME FISH CAUGHT IN ALABAMA is prohibited. More than one day's catch of game fish cannot be transported beyond the borders of the state and then only for personal use.

GAME FISH MAY NOT BE USED FOR BAIT nor caught by other than ordinary hook and line, fly, troll or spinner. Illegal fishing devices will be confiscated.

FISHING LICENSES: Non-resident (annual), \$5.00. Non-resident (trip), \$2.00. (Trip license allows for seven consecutive days.) Residents (annual), \$1.00. Persons over 16 years of age, using rod and reel or artificial bait, lure or fly, in public streams and bodies of water in which fresh water fish appear, required to purchase license. No license required for salt-water fishing.

TACKLE

A black and white line drawing of a fish jumping out of a bowl. The fish is depicted with a large, open mouth, showing its tongue and teeth, and a wide, happy smile. Its body is curved upwards, and its fins are spread out. The bowl is simple, with a few lines indicating its shape and the water inside. The background is plain.

See It All **BALDWIN COUNTY** From The Air

OAK AIR SERVICE

ANYWHERE **CHARTER TRIPS** ANY TIME

Flight Instruction **Local Sightseeing Trips**

Plane Licensed by U. S. Civil Aeronautic Authority for
Passenger Service and Flight Instruction.

Pilot Certified Competent For Passenger Service and Flight
Instruction by Civil Aeronautic Authority

6 MILES SOUTH OF

OAK FIELD

FOLEY, ALA.

(See Map)

LYN-MAR RESORT and FISHING LODGE

Located 7 Miles South of Foley and About
3 Miles From The Gulf

GUIDE SERVICE AVAILABLE
WE ARE CENTRALLY LOCATED FOR GULF
AND BAY FISHING

MODERN HOTEL ACCOMMODATIONS—Simmons Beds, Excellent Meals and a quiet restful atmosphere combine to make your stay a pleasant one—Our Cabins are well furnished, all have electric lights and some have running water.

The Charming Hospitality and Quiet Beauty of Lyn-Mar will
Linger Long In Your Memory
FOLEY, ALA. (See our location on map.) **PHONE 120-W**

MELROSE BOAT WORKS

Designers and Builders - Wooden Boats of All Description
SITUATED ON WEEKS BAY
POSTOFFICE AT MAGNOLIA SPRINGS, ALABAMA

CANAL CAFE

SOUTHPORT, ALABAMA

Bait - Boats - Live Shrimp - Surf Bathing
Fresh and Salt Water Fishing
Mose Cooper, Prop.

homes, existed here for many years . . . The town was laid out with broad, straight streets, named for famous men — Washington, Franklin, Baldwin, et. al. — while the cross streets were named for flowers, trees and shrubs. There were two public squares, one for public buildings and the other for the market. It was incorporated in 1815. From 1818 to 1828 it contained from 3,000 to 4,000 inhabitants, and rivaled Mobile as a commercial center. It had its newspapers, cotton presses, stores, churches and all that counts for prosperity." (from A Brief History of Baldwin County, by L. J. Newcomb Comings and Martha M. Albers). In the time of its glory Blakeley was the county seat of Baldwin. What happened to Blakeley? Some say yellow fever—but where was the gulf port that was free from fever scourges of every kind in those old days before such things were understood? Some say land speculation—but few growing towns escape that. As a matter of fact the South Carolina, Georgia and Florida coasts all have these "dead towns", that flourished hecically and faded suddenly in this same general era; and thus one may well imagine the fate of Blakeley to be involved in some more general mischance than purely local causes would justify. In any case, a badly shrunken Blakeley became the objective of the last great campaign of the War between the States (as an approach to Mobile) and the final blow to Blakeley fell at that time. (See reference to Old Spanish Fort in trail log No. 2). Now the townsite is a heavy growth of silent forest, and the waterfront, once alive with the din and clamor of overseas shipping, is as you see it today—almost as though Blakeley had never been.

On your way out, pause at the gap in the trenches where the road passes through. Notice, in the distance on all sides, the gun emplacements that testify to the heavy fighting here. Very interesting battlefield souvenirs in this vicinity for careful searchers. You may wish to while away some time deciphering the pathetic old stones in Blakeley cemetery. From where your car is standing, it is located about one or two hundred yards to the right. You will notice the sign above the gateway in the distance.

Motorists with a taste for ex-

ploring unlogged trails may like to turn left on emerging to the Bromley road and go northwards (on graded clay—see map) towards Hurricane and Carpenter (very old settlements) and so out via Bay Minette or Stockton. Beautiful ride; interesting country. It only remains to say of the trail in to Blakeley that one should pick dry weather for the excursion.

8. WEEKS' BAY DRIVE (About 7 Miles)

The Weeks' Bay Drive affords a beautiful ride through farming country settled long ago. Most of the people are of Spanish and French descent, and title to most of the land is held by virtue of grants dating from historic Spanish days. Cross the bridge at Magnolia Springs (see map), take first left turn, then first right, and continue about three-quarters of a mile to crossroads. Turn right, past the store and filling station, and continue. Follow trail by map, or ask at store, where inquiries are welcomed. The graded clay road has undergone recent improvement and is quite safe and comfortable. Soon there bursts upon the view a magnificent vista, through giant, moss-strewn oaks, of Big Mouth (entrance of Weeks' Bay into Mobile Bay). Rowboats for rent; good fishing and crabbing; cottages, meals, splendid picnic grounds. A lovely, short beach walk takes one to the shore of Mobile Bay and an unusual view of that bay.

9. THE DIXIE GRAVES PARKWAY (24 Miles)

The Dixie Graves Parkway affords an indescribably lovely scenic drive. It connects Gulf Park with old Fort Morgan. Passing between canal and lagoon (see map) it leads along the peninsula that here separates Mobile Bay from the Gulf of Mexico. The parkway is newly opened, and one rides on hard, fast surface through beautiful, untouched semi-tropical forests, now beside the lagoon, now skirting the waters of the bay, at last between the bay and the open gulf. It can be said without fear of dispute that nowhere on the entire crescent of the gulf is there a drive like this. Strings of pelicans droop their stately way along the lagoon; sand dunes lift up

American Plan - Catering to the Discriminating
Open Year Thru

FREDERICK'S LODGE

Boats
Launches
River, Bay and
Deep Sea
Fishing Parties
a Specialty.

Mrs. Ramona Frederick,
Prop.

"Trails End"

ON BEAUTIFUL BON
SECOUR RIVER

Recreation
Gulf and River
Bathing
Boating
Rest
Sea Food
Dinners
a Specialty.

HABITAT OF THE SPECKLED BEAUTIES, RED FISH,
MACKEREL, BONITA, LING

7 Miles South of Foley, Ala., on Foley-Gulf Highway
(See our location on map)

P. O. Box 215 - Foley

Phone 905

RESERVATIONS BY APPOINTMENT ONLY

HEWITT'S CAMP

At Mouth of Week's Bay - Board - Lodging - Cabins

MRS H. G. HEWITT, PROP.

STOP . . .

FOR TOURIST AND FISHING INFORMATION
ON THE ROAD TO WEEK'S BAY

P. A. BARNARD

GENERAL MERCHANDISE

NOTICE TO FISHERMEN

TARPON LODGE

On Beautiful Weeks Bay — The Home of the Game Fish
Opens June 1st, 1939 - Year Round Resort

You Anglers who know these waters have always longed
for a truly Modern Camp. This We Offer You.

Single and Double Lodges Equipped With Modern Bath
Innerspring Mattress - Cooking Facilities or Regular Meals
in Main Lodge Dining Room.

Boats - Bait - Guides - Both Fresh and Salt Water Fishing in
the most renowned waters in South Alabama.

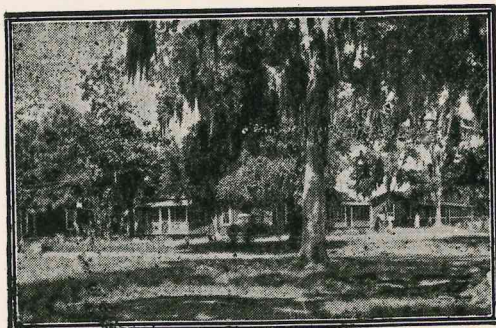
A GRAND PLACE TO PLAY OR REST

Address Tarpon Lodge, P. O. Magnolia Springs, Alabama.
(Look for our location on map.)

SWIFT'S STORE AND FISHING CAMP

Motor Boats - Skiffs - Live Bait - Fishing Tackle

CHAS. H. WAKEFORD and WILLIAM H. SWIFT, Prop.



Cotages with Electric Lights
Shower Baths.

BON SECOUR, ALA.

TELEPHONE NO. 903

GENERAL MERCHANDISE - OYSTERS - CRABS - SHRIMP

FISH - IN SEASON

Look for location of Bon Secour on map

PERDIDO PASS DEEP SEA FISHING ASSOCIATION

ORANGE BEACH AND CASWELL, ALA.

Welcome Fishing Parties for all Varieties of
Fishing

Good Fishing The Year 'round

FIRST CLASS ACCOMMODATIONS ON BOATS
AND ASHORE

Contact the Following Boatmen of the Fishing Association

AMEL CALLAWAY
DAN CALLAWAY
HERMAN CALLAWAY
LEROY CARSON
AL DIETZ
H. L. EWING
B. T. HUDSON
JIM HUDSON

CHARLES HUFF
BILL MORRILL
BOB WALKER
CLARENCE WALKER
LEE WALKER
RUFUS WALKER
ROY WALKER
RABUN WALKER
CROCKETT WHITE

their golden mounds against the blue of the sky. At the end of the trail are Mobile Point and the old fort, and the steamer lane that leads outward to all the ports of the world.

Skirting the fishing hamlets of Gasque and Palmetto Beach, the Parkway passes, near the latter place, famous Shell Banks, a locality of greatest interest to the antiquary and the ethnologist (see map); and so, past the site of Navy Cove (map) to Fort Morgan. The fort is open to the public in daylight hours without charge, and the use of cameras is permitted. Free guide service is provided at the fort. See road map for brief historical note regarding the locality.

10. MUSCOGEE DRIVE

For a picturesque and delightful drive through historic old country, the Muscogee Loop Drive is recommended. Take first right-hand turn on graded clay after leaving Bay Minette eastbound on Ala. 3 (US 31—see map). Over miles of thickly-forested, hilly country one approaches Perdido River (state line at Muscogee Bridge). Beautiful picnic grounds at the spring, across bridge. Inquire in village for turn onto good graded clay road that leads southward (see map) to US 90 (Old Spanish Trail) by which one may return over pavement into the center of Baldwin. Mileage for this tour will depend on whether one makes circle tour or returns on his own tracks. Use mileage scale on map and estimate distance according to choice of route for tour.

11. BON SECOUR HIGHWAY

(3½ Miles)

The Bon Secour Highway leaves the pavement of the Sibley Holmes Trail (Ala. 3; see map) about 4½ miles south of Foley. Follow westward 2 miles, turn left at crossroads, turn right at road end, take first left and continue to Bon Secour. At the road's end are found exceedingly beautiful river views, with huge oaks from which hang streaming festoons of Spanish moss. Picnic tables available; also cottages, boats, guides and all accommodations. The river teems with fresh and salt water fish. Bon Secour is famous as the home of the delicious Bon Secour oysters. It is a very old settlement, full of historic and romantic asso-

ciations. Indian relics and pirate traditions abound. The name Bon Secour (bay, river and village) will be recognized as dating from French days. It was given to the locality by French sea-captains, and refers to the splendid, safe anchorage. Various translations are given. Adopting the viewpoint of the storm-tossed ocean mariners of old in their little wooden ships, this writer makes it "Pleasant Security". Notice the location of Bon Secour on road map and on special deep-sea map on page 44.

12. ORANGE BEACH AND CASWELL HIGHWAY

(10 Miles)

The highway to Orange Beach and Caswell leads eastward from a point on the Sibley Holmes Trail (see trail log No. 1 and road map; also special deep-sea fishing map at end of this trail log). It leads to the deep-sea fishing camps which lie opposite the Gulf of Mexico inlet to Perdido Bay. For the first 3 miles this highway runs beside the famous Intracoastal Canal; during the entire span of the second mile it is bounded on the right by beautiful Gulf State Park. The map shows the splendid Orange Beach and Caswell anchorage for small craft, which may approach by way of the inland canal from either direction and lie here in safe harbor with all supplies available, and yet be only a few moments from the outlet to gulf waters which abound with tarpon, ling, saifish, king and Spanish mackerel, bluefish, bonita, cavalla and all the other hard-fighting beauties of the Gulf Stream waters. Incidentally, the location between gulf and bay is one of extreme beauty. Good bathing on inside bay beach. One is here (as at Bon Secour and Weeks' Bay) back in the old-time haunts of the buccaneers. More than once residents of Baldwin have stumbled upon pirate treasure quite accidentally. In one instance a gentleman living beside a bay in Baldwin came upon a chest of treasure while cultivating his fruit trees with a spade. At another place a party excavating Indian mounds for a museum lifted out a treasure from the margin of a mound (placed there by a pirate long after Mound Indian days, of course). In still another case the blade of a heavy road-making

THE BALDWIN COUNTY CALENDAR

(Continued from page 5.)

win County lawns are aflame with gorgeous displays of Azaleas and Camellias. Magnolia Springs is known as the Azalea Village because of its unusually spectacular display.

SUNRISE EASTER SERVICE: On Easter Sunday morning each year a sunrise service is held at Knoll Park, in Fairhope. All denominations share in the brief, impressive service, and people from all over the county attend.

GOLF TOURNAMENT: A springtime event of note is the annual golf tournament played over the beautiful golf course of the Magnolia Springs-Foley Country Club. Open to club members and all visiting amateurs.

MOBILE-BALDWIN COUNTY DAY: Each year (usually in March) the School of Organic Education (see page 21) is host to a host of visitors for a special day of field sports and folk dances. Though this is a special event on the school calendar, visitors are received at the school any day during the school year.

THE HOBBY SHOW: At Foley, during the spring months (watch newspapers for date on all these events that do not fall on an exact anniversary) a Hobby Show is held that attracts countywide attention for the exceedingly clever and fascinating exhibits that characterize it.

POTATO TOUR: In a good year Baldwin's potato crop will run into several million dollars. In April the potato fields are a sea of green reaching the horizon, with a prospect of turning into gold shortly. Visitors from as far away as the Canadian border join with state and county people in a motorcade tour over a route designed to show the fields in their greatest beauty. A fish-fry at noon and a banquet at night are features of the day.

FLOWER SHOWS: All Baldwin's communities feature flower shows in the spring and again in the fall. Why not? The flower gardens of the county are a riot of beauty all the year 'round. Watch the papers and take your pick—or better yet, attend them all.

MAY DAY: On May Day the place of rendezvous is Daphne. From all over the county crowds gather beside the bay in Daphne for a day of sports and fun and to crown a King and Queen of the May.

FOURTH OF JULY: All Baldwin and nearby counties join Fairhope to celebrate Independence Day in a big way. Baseball, boxing and water sports, with fireworks and dancing at night, keep the huge crowds happy and make the day outstanding in the Baldwin calendar.

TENNIS TOURNAMENT: Each summer, usually early in July, Fairhope holds its tennis tournament on the municipal courts near the bay. Good tennis and good fun for participants and spectators.

SILVERHILL MID-SUMMER PICNIC: This is always a jolly and well-attended event which invites and attracts visitors from all over the county. The scene of the picnic is the beautiful woodland park just east of town.

BALDWIN COUNTY FISHING RODEO: This nationally famed rodeo (fresh-water, salt-water and deep-sea) has jumped into prominence recently as the foremost event of its kind on the gulf coast. Why? First-class, stream-lined management plus a natural setting that can't be duplicated. The map on page 44 of this booklet only hints at the possibilities. The dates for 1939 are August 11 and 12. Paved highways lead from the North directly to the gulf, or special rodeo excursion Pullman cars bring you to Foley for the rodeo dates. For complete information and descriptive literature address Max Griffin, Secretary, The Baldwin County Fishing Rodeo Association, Foley, Ala.

BASEBALL: An intercity league plays its regular season series all through the summer months in the various Baldwin towns. Schedules of games appear in the local papers. In winter, there is football, followed by basketball.

LABOR DAY: In September, on Labor Day, Fairhope repeats the Fourth of July bayside celebration. Summer ends, winter begins; but Fairhope goes on. An unsurpassed climate, with cool summers

machine cut open a treasure chest in passing, whereupon a shower of gold pieces poured down the embankment and spread into a glittering pile of precious metal under the astonished eyes of the workmen.

A fleet of charter boats is available (by the hour or for any time wanted) at most reasonable rates, with experienced fishing guides and navigators in charge. Living accommodations can be secured in either Orange Beach or Caswell. The cruise into the open gulf affords a delightful excursion, a treat in itself of a sort that is sure to be remembered; and even to those not interested in fishing the deep-sea trip can be safely recommended as an experience they will appreciate and enjoy.

At Orange Beach Hotel in Orange Beach may be seen an extraordinary collection of sea shells that have been brought together from every port of the gulf coast over a period of more than thirty years.



THE BALDWIN COUNTY CALENDAR

(Continued from page 43.)

and mild winters, make Fairhope a year-round resort and vacation center.

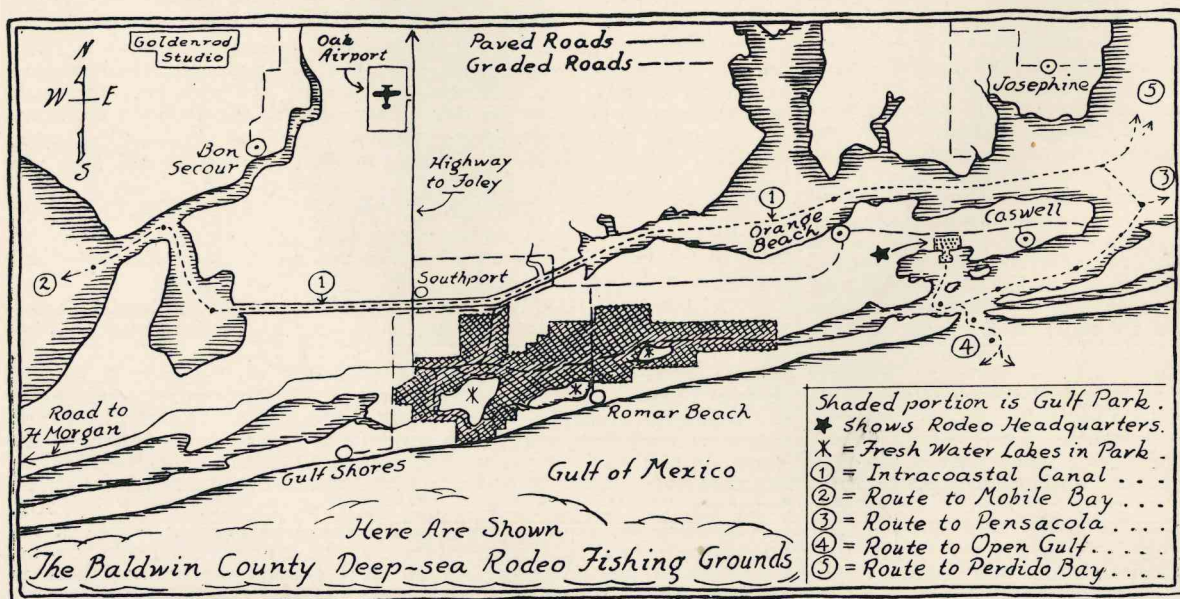
THE BALDWIN COUNTY FAIR: This all-county fair is held each year at Silverhill. Large crowds, from all over the county and from outside points, testify to the attractive and interesting nature of the exhibits.

THE FAIRHOPE TOURIST CLUB: Opening in the fall of each year, the Fairhope Tourist Club continues throughout the winter months to function as a center for tourist events along the bayshore, and is headquarters for entertainment and recreational facilities in that area.

TRAILER CONVENTION: The American Auto Tourist Association holds its annual fall convention beside Mobile Bay in Fairhope. With the entire country to pick from, this national association has selected Fairhope as one of its four regular convention towns. One visit to Fairhope tells why.

ARMISTICE DAY: Countywide observance of this day is held on alternate years in Bay Minette and Foley, these two towns sharing the honors. Years that end with an even number or with zero belong to Foley; years that end with an odd number belong to Bay Minette. For instance, this year (1939) belongs to Bay Minette. The regular observances of the day are held, plus a rousing football game between Bay Minette and Foley school teams in the afternoon.

MUSEUMS: In Foley, in the office of Claude Peteet opposite the park on McKenzie Street, a museum of agricultural products and Baldwin County oddities and curios is open to the public and is well worth seeing. In Fairhope the public library maintains a collection of highly interesting exhibits (see Fairhope street map for location). At Magnolia Beach in Fairhope (Burkel's Pavilion) may be seen a beautiful large exhibition featuring Indian relics and other curios, arranged in a scholarly manner and displayed with splendid artistic taste. All three places are open to the public throughout the year, without admission charge.



PUBLIC LIBRARY

You Will Find A Full Line

—:— OF —:—

Sports Equipment, Fishing
Tackle, Hunters' Supplies,
etc., also Marine Supplies

"Everything In The Hardware Line"

—:— AT —:—

**FOLEY HARDWARE
COMPANY**

FOLEY, ALABAMA

It is a pleasure to us to answer promptly letters of inquiry
pertaining to fishing, hunting, etc. in Baldwin County

Foley, Alabama

*Center of the Resort and Agricultural Sections
of South Baldwin County*

We Have Practically All Types of Land For Sale or Lease—
Resort And Home Sites On Streams And Bays—Home And
Business Lots In Town And Developed And Undeveloped Farms
In Any Acreage Desired.

If You Are Interested In Locating In One of The Best And
Fastest Developing Sections In The South, It Will Pay You To
Investigate Conditions Here.

FOR INFORMATION WRITE

MAGNOLIA SPRINGS LAND CO.

945 GEORGE ST., CHICAGO, ILL.

SEE LOCAL AGENT

CHARLES J. EBERT

Foley, Alabama